

eLighting

Tri-Proof IP65 Linear

Product Description

The eLighting Tri-proof series is a durable IP65 lighting system designed to withstand high pressure jets of water splashes from any direction. It's anti-corrosive as well as impact resistant. Halting the ingress of any dust and can tolerate 5 joules of impact. The tri-proof is an attractive sturdy replacement for outdated vapour proof fittings which use old lethargic inefficient power hungry fluorescent tubes and ballasts. This system provides energy savings in excess of 70%. The tri-proof system illuminates with the highest possible quality of light presently available and is suitable for a wide variety of indoor, outdoor and industrial applications.



FEATURES

IP65

Dust Proof

Corrosion proof

IK08 Rating

5 Year Warranty

3000K / 4000K / 5000K / 6000K

50000 Hours L70 B10

EMC

125 lm/w

Made in South Africa

Construction & Installation

Constructed with a highly durable Polycarbonate diffuser enhancing uniform light transmission while encapsulating a 6063 Aluminium alloy cooling tray and PCB. Lined by series of 2835 SMD LEDs which are powered by an insulated electronic driver. This luminaire is free of glass, mercury and any hazardous substances. The Tri-proof luminaire is supplied with 1m of cabyre cable and ceiling mount clips for a hassle free and quick installation.

Electrical Specifications

The Tri-Proof Linear luminaire operates on 100 ~ 277V(305) AC. Utilising a premium quality electronic driver set offering reduced harmonic distortion and electromagnetic interference with no visible flicker. Completely Flicker free versions are available to compliment the highly efficient LED systems along with industry leading power factor and system efficiency. Driver performance can be customised to client specification upon request.

Applications

Ideal for areas which are exposed to the elements. Cold-rooms, Food preparation areas, Factories, warehouses and numerous outdoor areas. This luminaire can be utilized in array of applications safely and effectively.

Fixture Compatibility

Rated Power	Electrical Classification	Ingress Protection	Operating T°	Operating Humidity	Storage T°
18W 38W	Class II	IP65	-25 ~+45°C	0~95%	-25 ~+65°C

Technical Specifications

Tri-Proof Ultra-Lux

125lm/w

Model	Length	Power	Luminous Flux	Colour	Beam Angle	CRI
TRI65UL-2	600mm	18W	2250lm*	3000K, 4000K, 5000K, 6000K	120°	82Ra
TRI65UL-4	1200mm	38W	4750lm*	3000K, 4000K, 5000K, 6000K	120°	82Ra

Tri-Proof Commercial

100lm/w

Model	Length	Power	Luminous Flux	Colour	Beam Angle	CRI
TRI65C-2	600mm	18W	1800lm*	3000K, 4000K, 5000K, 6000K	120°	84Ra
TRI65C-4	1200mm	38W	3800lm*	3000K, 4000K, 5000K, 6000K	120°	84Ra

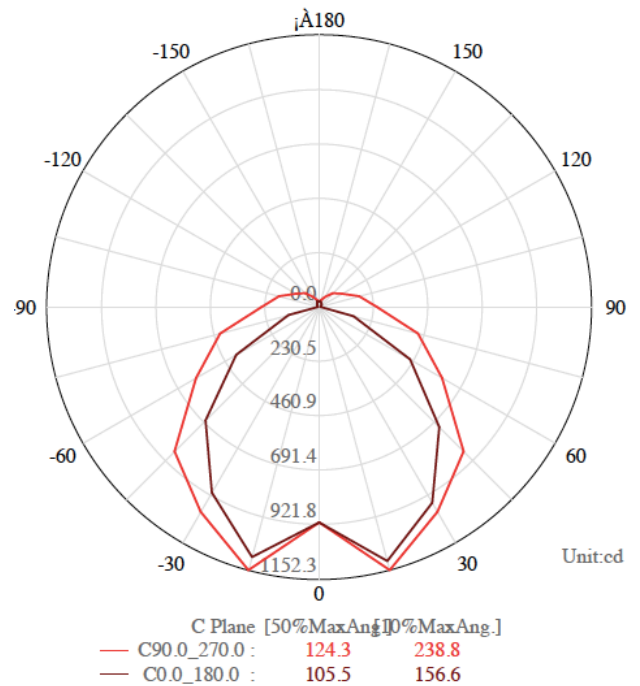
*Specifications may vary slightly depending on cct

FEATURES

Performance Summary

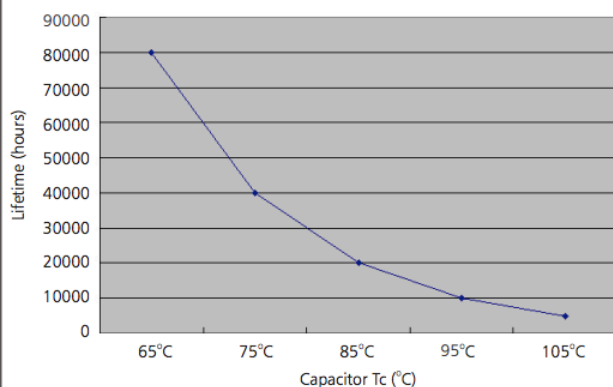
Input Voltage	100V -277 (305V) AC
Frequency	50 / 60 Hz
Efficiency	86%
Power Factor	0.97
Short Circuit Protection	Yes
input Current	Constant current
Rated Life	50000hrs L70 b10
Flicker Index	0.5
THD	13%
SDCM	>3

Polar Curve

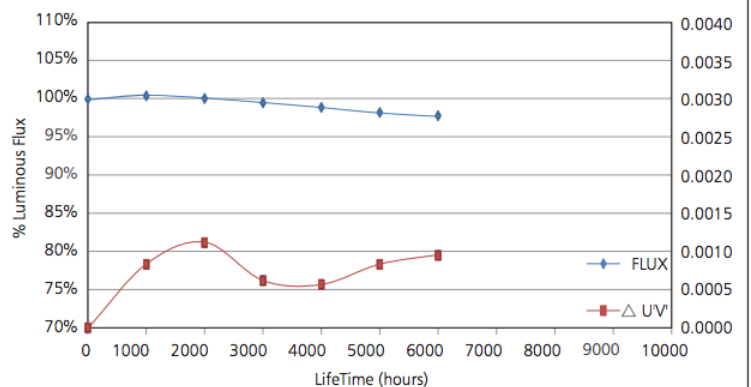


Polar Curve - Tri-Proof Commercial 1200mm 38W

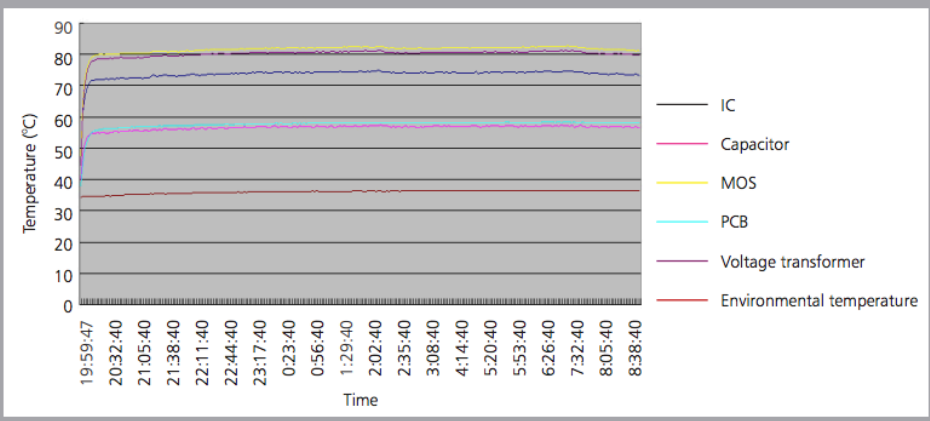
Driver Lifetime



LED Light Decay Rate



Driver Temperature



The driver lifespan is based on capacitor working temperature.

