



LED DOWNLIGHT
ROUND RECESSED PANEL

- *DIE CAST ALUMINIUM (PASSIVE COOLING)
- *BACK LIT
- *ANTI-GLARE
- *36000 HOURS
- *90lm/w

10W ROUND PANEL.
*4000K-6000K.
*80mm CUTOUT.

15W ROUND PANEL
*4000K-6000K.
*115mm CUTOUT.

LED downlights are versatile lighting fixtures that are recessed into ceilings to provide ambient illumination while adding a sleek and modern aesthetic to any space.

They are commonly used in residential and commercial settings, including kitchens, living rooms, offices, and retail stores. LED downlights offer several advantages over traditional lighting sources, such as energy efficiency, long lifespan, and flexibility in design. They emit directional light, allowing for focused illumination where it's needed most, and come in various colour temperatures to suit different preferences and applications.

LED downlights are an excellent choice for achieving efficient, stylish, and customisable lighting solutions.

39.1°C

e=0.95



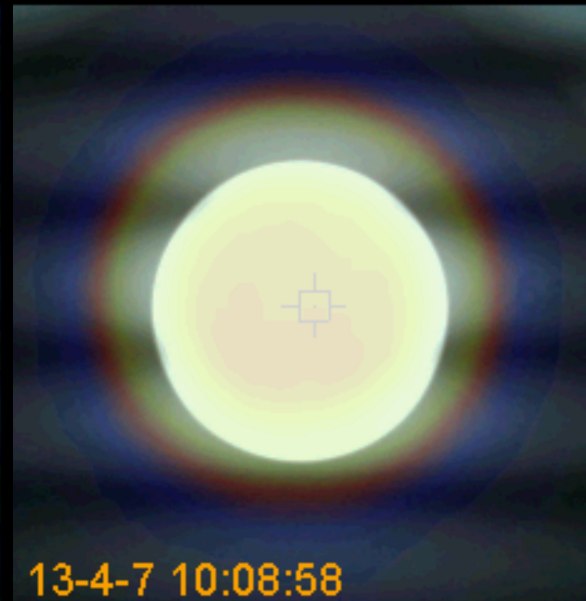
39.4°C

e=0.95



MIN:19.8°C
MAX:46.8°C

10:08



MIN:20.6°C
MAX:47.2°C

10:09



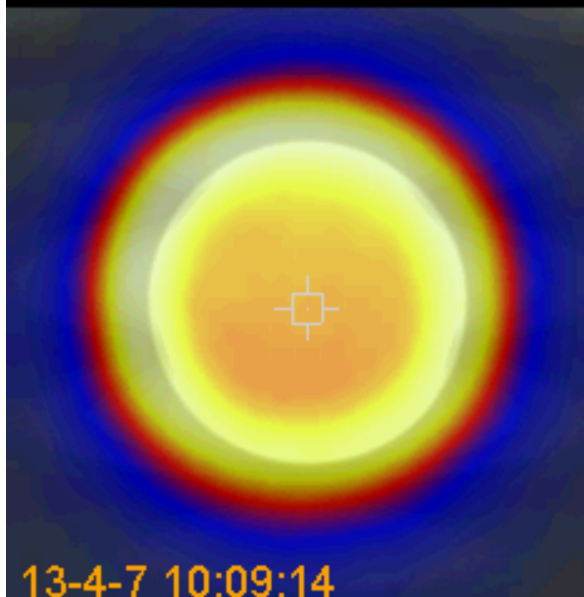
39.3°C

e=0.95



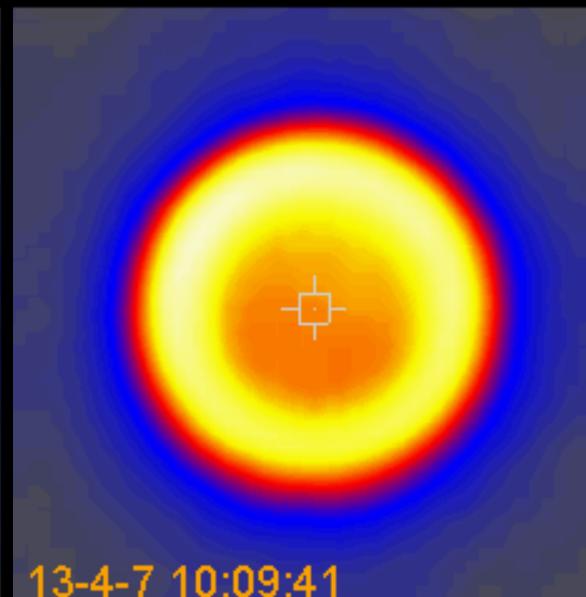
39.2°C

e=0.95



MIN:20.1°C
MAX:47.3°C

10:09

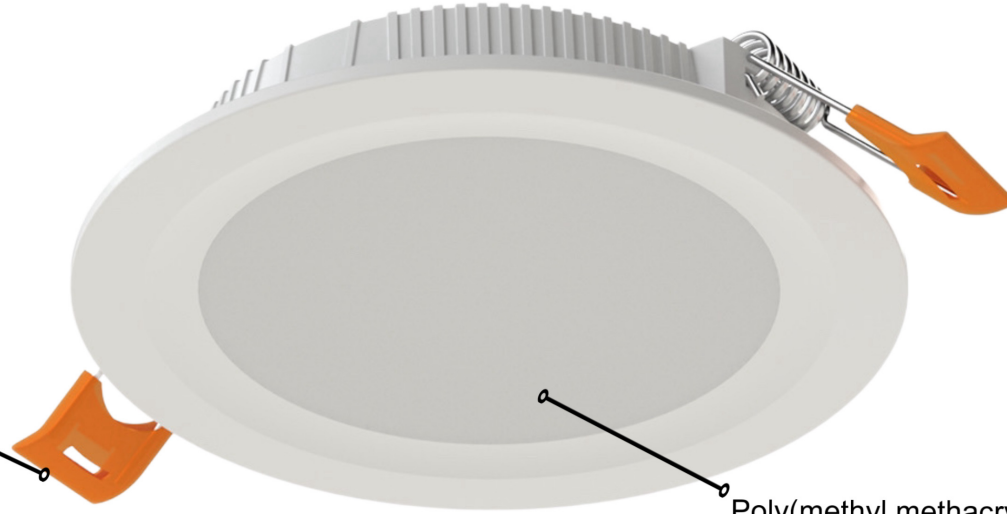


MIN:19.2°C
MAX:47.0°C

10:09

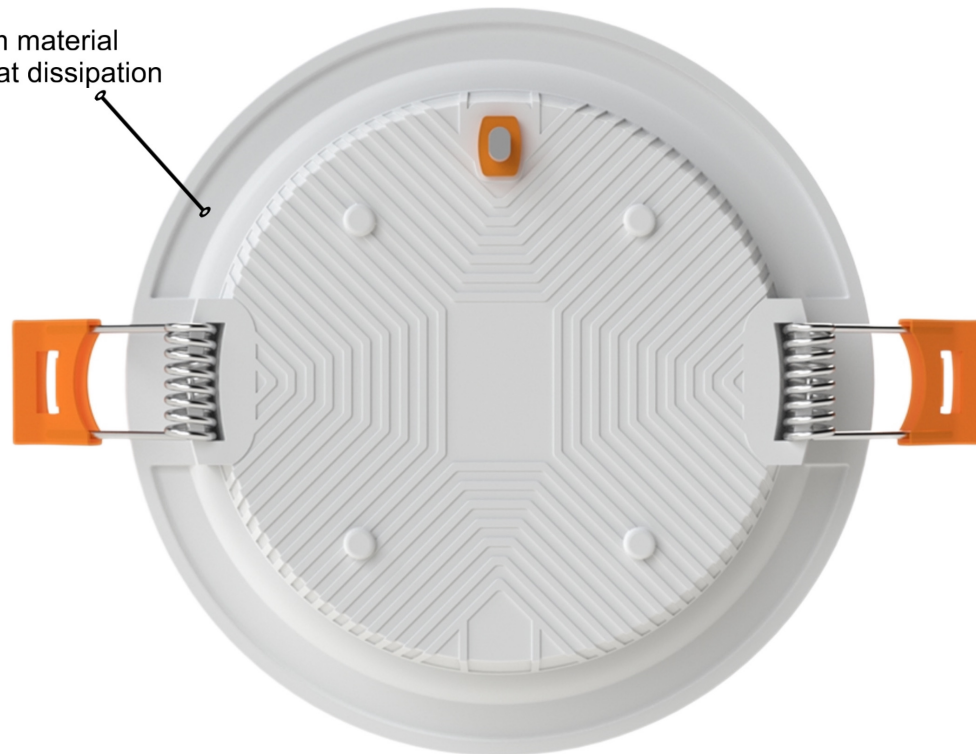


High quality
Snap spring



Poly(methyl methacrylate)
(PMMA)

Aluminium material
For better heat dissipation



3 YEARS
WARRANTY

eLighting