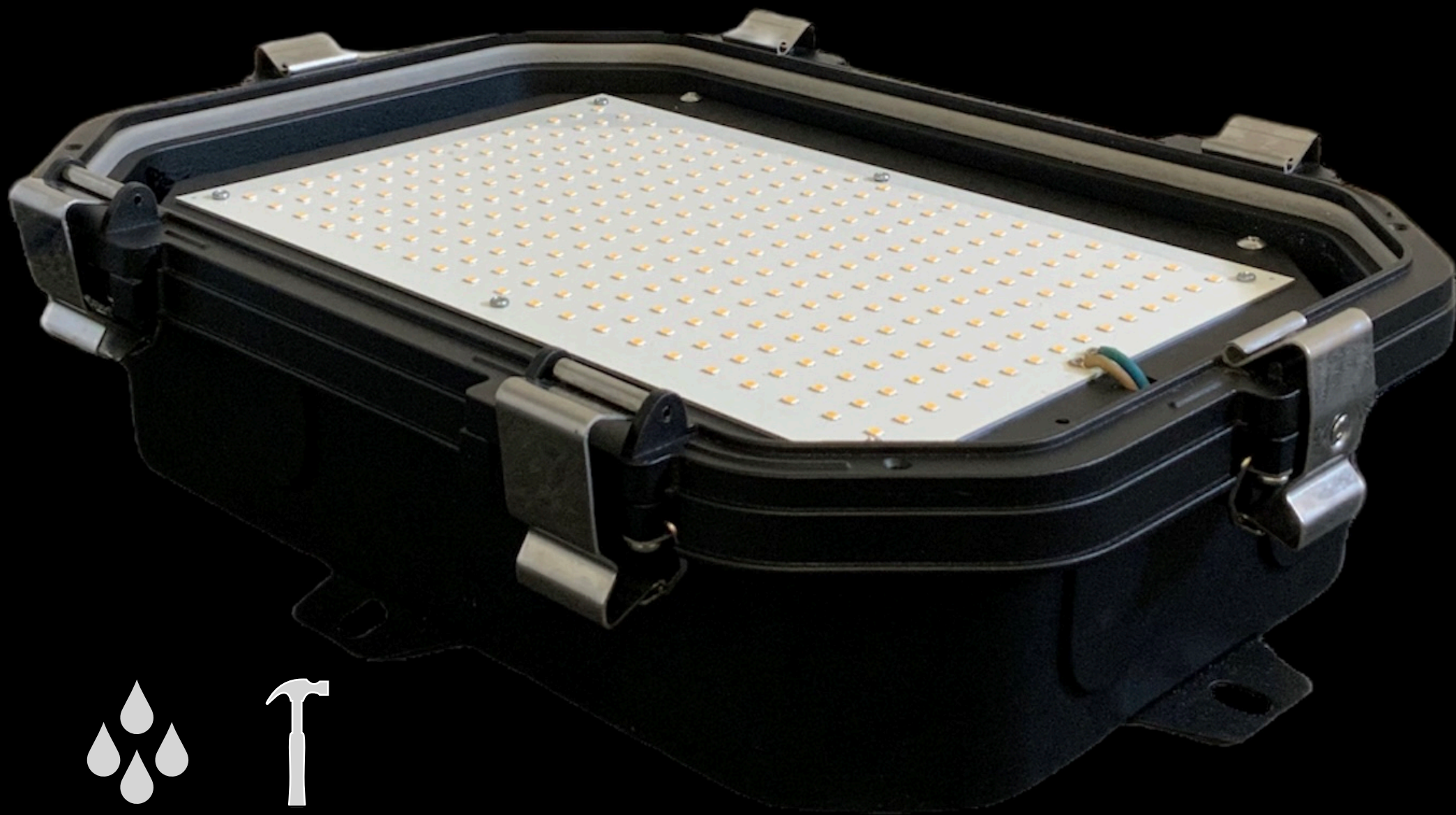


eLighting

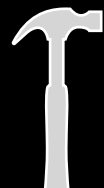
TITAN LED BULKHEAD



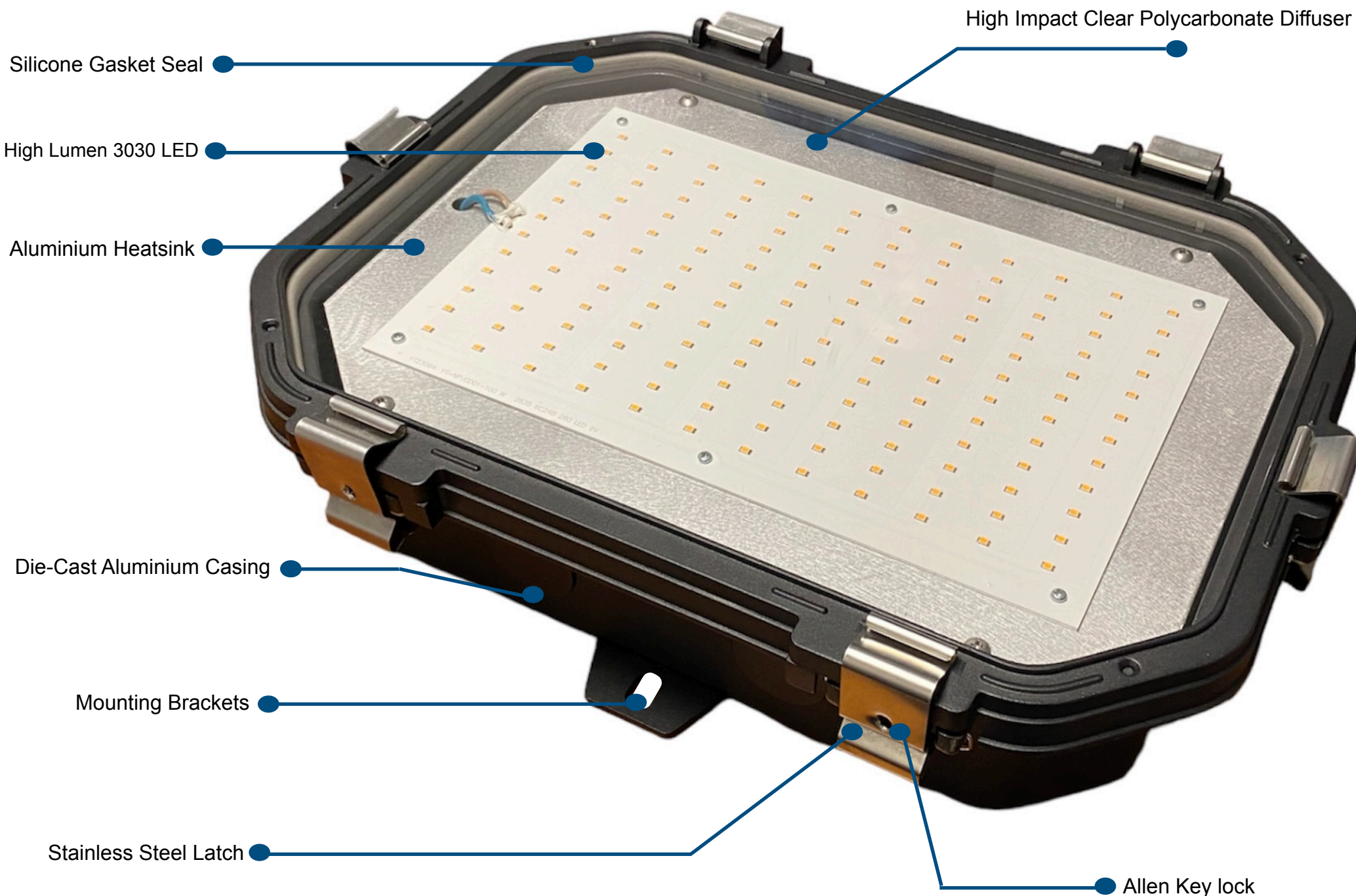
TITAN LED BULKHEAD



IP66



IK10



Silicone Gasket Seal

High Lumen 3030 LED

Aluminium Heatsink

Die-Cast Aluminium Casing

Mounting Brackets

Stainless Steel Latch

High Impact Clear Polycarbonate Diffuser

Allen Key lock

LED BULKHEAD

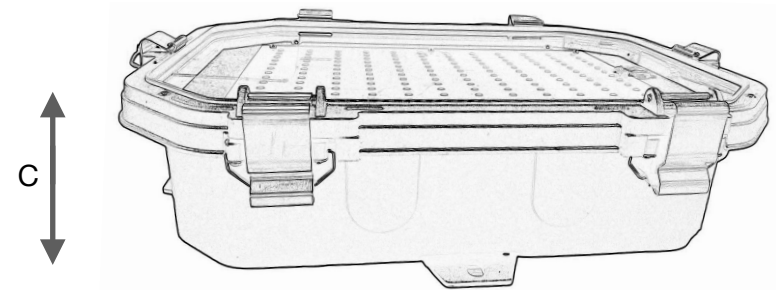
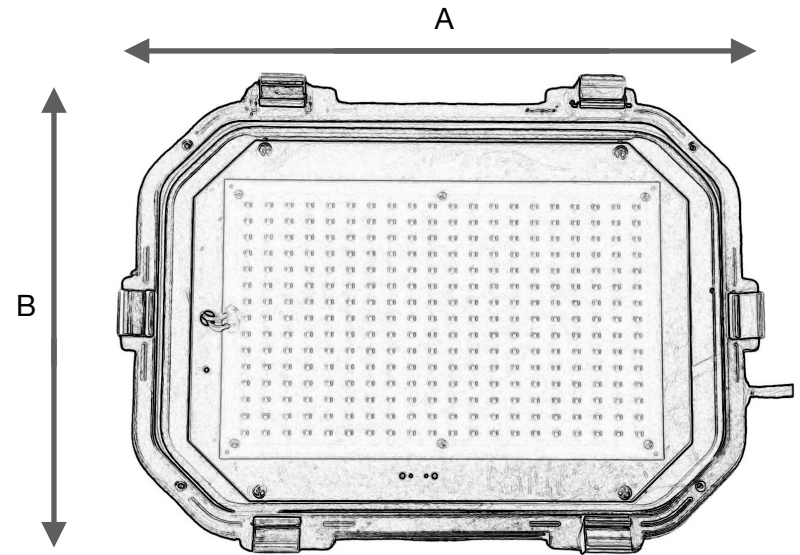
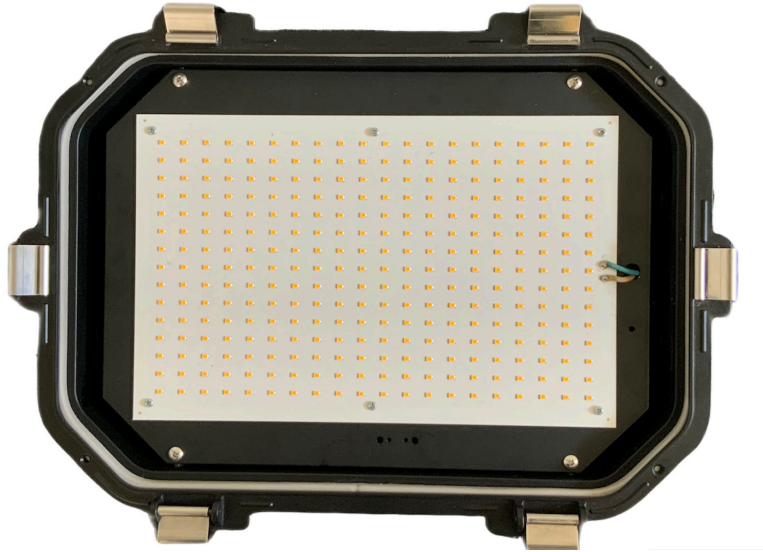


Model	Power	Luminous Efficacy	Luminous Flux	IP Rating	Impact Rating	Dimming
BHT60	60W	160lm/w*	9600lm	IP66	IK10	1-10V

Electrical Data		Photometric Data	
Operating Voltage	220- 240V (100 - 277V)	Luminous Flux	160lm/w
Frequency	50/60Hz	Colour Rendering Index	<80
Power Factor	0.92	Colour T°K	3000K / 5000K
Efficiency	92%	SDCM	3
Start-up Time	0.1S	Light Distribution Angle	140°
THD	15%	Unified Glare Rating	22

Standards		Temperature & Operating Conditions	
Compliance	SANS (IEC) 60598 IEC 60529	Operating Temperature	20 ~ + 70°C
		Ambient Temperature	-40 ~ +65°C
		LED Life Span	70 000hrs (L80 B10) @ 25°C
IP Rating	IP66	Warranty	5 Years
IK Rating	10	Surge Protection	6kV (10kV optional)

Electronic Control Gear			
Brand Model	Inventronics -EUM100S280DG	Lifetime	114 000 hours@ 70°C
Iout	2.8A max	Surge Protection	6kV (10kV/20kV optional)
SELV	17- 54V DC		



Dimensions	
A - Length	410mm
B - Width	310mm
C - Breadth	100mm
Weight	4.2Kg



eLighting

www.elighting.co.za info@elighting.co.za Tel: +27 11 454 3964
Unit B4 Growthpoint Industrial Estate. 1 Bell Street, Meadowdale, Germiston.1609