

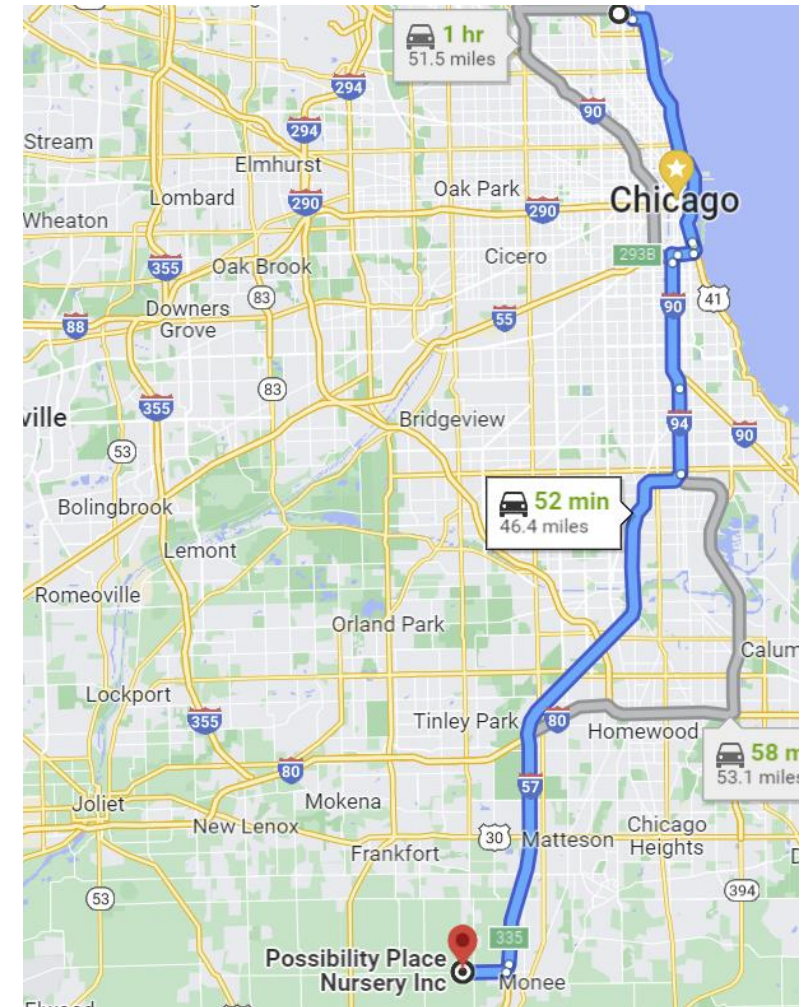
NW Corner Rosehill & Ravenswood

Located adjacent to the
Horst & Anna Wagener
WEAR Garden, an
abandoned property for
over 20 years, WEAR
will transform this
3,000 sq ft lot into a
native oasis for
Butterflies, Birds and
other Pollinators.



Travel to Monee, IL to meet with Possibility Place Nursery

One of the Midwest's premier nursery specializing in only native plants. The consultants at Possibility Place drew up a plan for the site with recommended natives best suited to the conditions of our site and which would also be plants to create a habitat that is highly attractive to a host of butterflies, pollinators and birds.



Possibility Place Nursery

Designed by a Chicagoland leader in all native plants



Chinkapin oak



Chokecherry



Blackberry
Along wall



Elderberry



St John's Wart



Prairie dropseed grasses
with mixed perennial flowers

Low ground cover plants
in front to not block views



Wild Black Cheery Tree
with Gooseberry around it



Chinkapin Oak Tree

Hosts plant for:
Red-spotted Purple and others



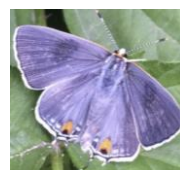
Wild Black Cherry Tree

Hosts plant for:
Eastern Tiger Swallowtail



St John's Wort

Hosts plant for:
Red Hairstreak



Elderberry

Hosts plant for:
Spring Azure



Gooseberry Shrub

Hosts plant for:
Comma Butterfly

Nectar:
A food source for many species of bees



Chokecherry Shrub

Hosts plant for:
Giant Swallowtail
Its late summer fruit also provides food for birds



Blackberry Shrub

Hosts plant for:
Zabulon Skipper
Red-banded Hairstreak
Nectar:
Eastern Tiger Swallowtail



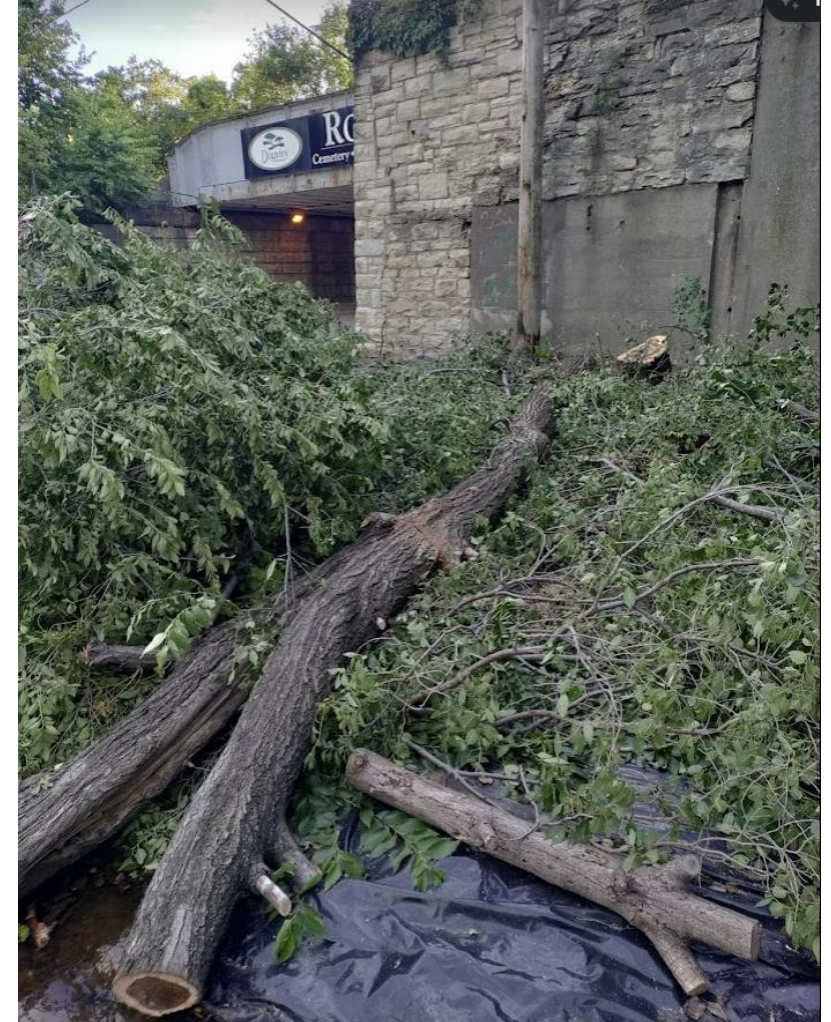
STEP #1

Solarizing existing grass to kill off it and weeds to prep for Fall planting.



STEP #2

Removal of trees either dead or in poor condition. Pleaded with City for help but was questionable as its not City property. But our Alderperson Vasquez came through and the City got it done.



STEP #3

The trees up above on what use to be the platforms from the former Rosehil Railroad Station needed to be thinned out. There was no City help with these trees. The team did it ourselves and manually hauled off the debris to the wooded area about 150 yards to the north.



STEP #4

The heavy lifting, clearing out some of the gravel pit and hauling it out spreading it across the front of the WEAR Garden along the curb.



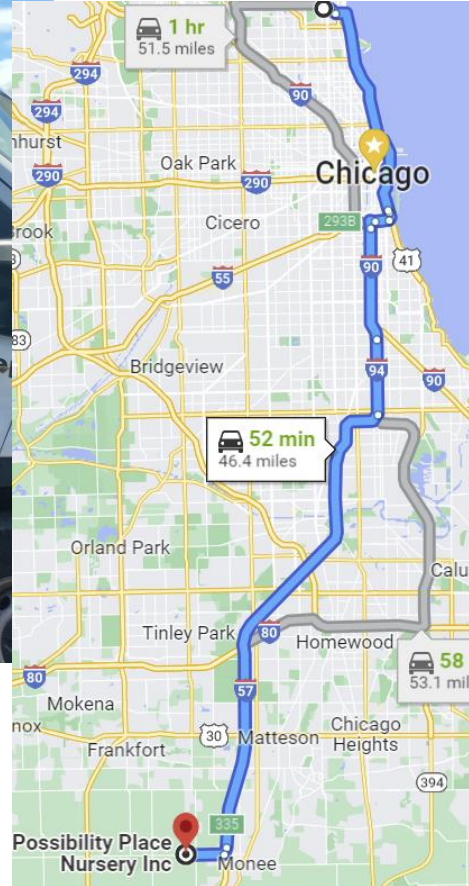
STEP #5

One load of dirt to fill in the gravel pit opened
Two truck loads of compost to spread over the entire lot.



STEP #6

Rent a truck and drive back to Possibility Place in Monee and collect all the new plants ordered to compete our pollinator habitat.



STEP #7

The fun stuff, planting!

With the two new trees, there were over 40 potted native shrubs and dozens of other smaller plantings.



Some may think this was the easy part, it was not.

Because the ground is so hard and there's still considerable stone in spite of what we dug out, pickaxes had to be used to dig many of the holes to transplant the shrubs and trees. We also encountered many large stone blocks, remnants of the cell phone tower that existed here 30 years ago.



STEP #8

The City Dept. of Forestry brought over a truck load of woodchip to spread across the lot. Again, a lot of heavy lifting, regretfully we didn't get photos of that work in progress.



STEP #9

Watering the new plantings every few days until the first hard frost sets in.

STEP #10 - Coming in Spring 2023

The area between the road and the pathway will be planted with native Northern Dropseed Grasses mixed with Ohio Spiderwort.



With deep gratitude, WEAR thanks all those involved

- Suzanne Huffman - long term WEAR neighbor who generously funded the project
- 40th Ward Office:
 - Alderperson Andre Vasquez
 - Daniel Storm
 - Morgan Madderom and the Environmental Board
 - Bill Horenadel
 - Dept. of Forestry
- WEAR Residents:
 - Horst Wagener - Garden Founder and Mentor
 - Scott Fink
 - Charlie Parker
 - Barry Love
 - Ben Sanda
 - David Horak
 - Ben Franklin
 - Andy Dane
- Other neighbor volunteers who were incredibly helpful:
 - Paul Naylor & Maria Akchurin - from Bowmanville
 - Steve - from West Ridge

