

Butterfly Sanctuary 2021



Yesterday

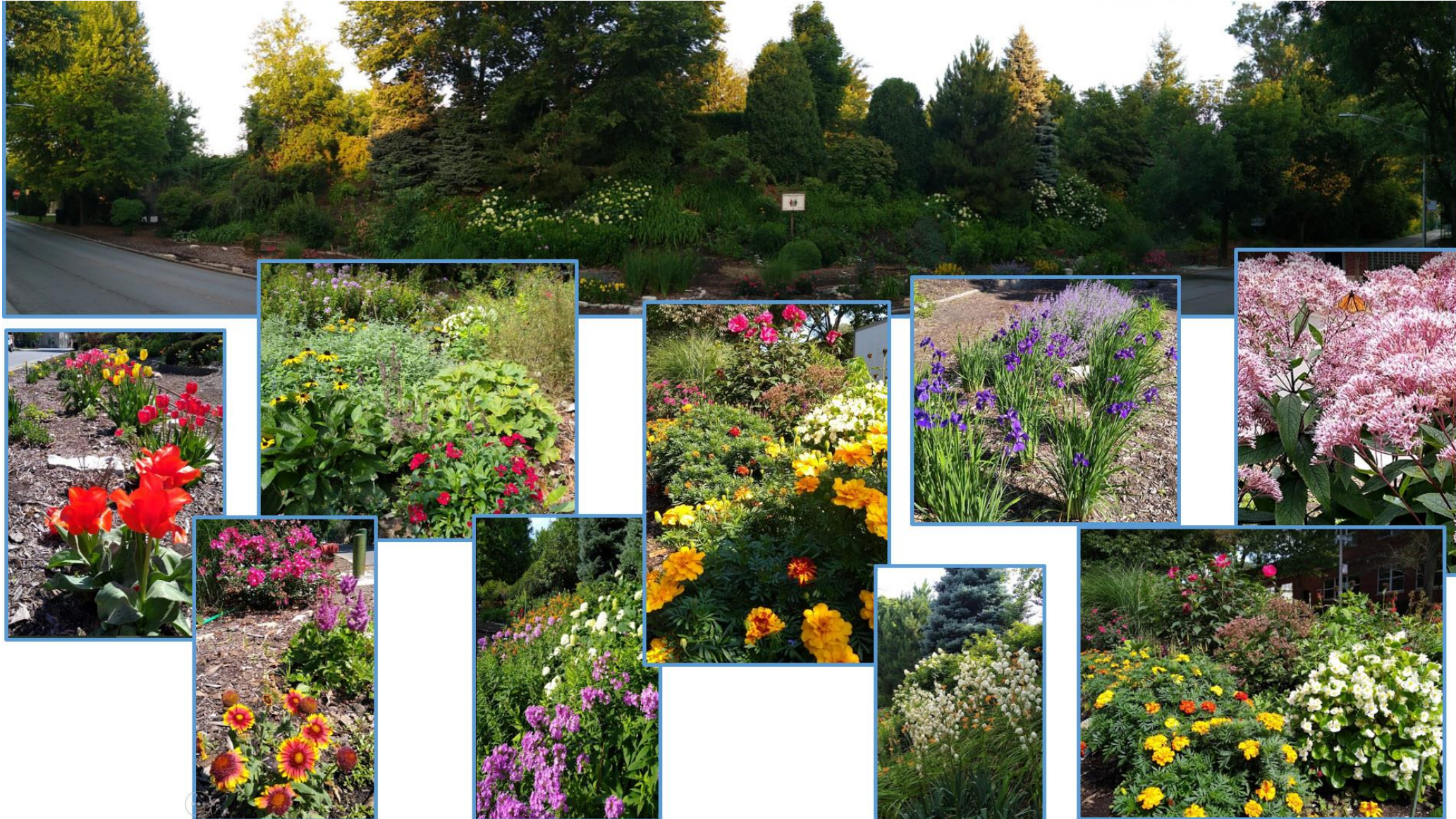


The Start of Something Beautiful

- WEAR was formed in 1992 in response to a cell phone tower be erected in front of the historic Rosehill Cemetery Entrance along the railway embankment. A response was led by Joe Drantz, the first WEAR President, to convince the Union Pacific RR to sign a lease with WEAR to use of the land running from Rosehill to Peterson which is still in effect today.
- The garden creation was led by Horst and Annie Wagener to beautify the railroad embankment that was normally strewn with garbage behind a chin link fence. With the assistance of the former Alderman O'Conner who had the City provide water access to the garden, and partnering with the Daley administration's newly formed Greencorps, the garden grew into a beautiful neighborhood asset and won multiple City awards during the Daley years.



Today



For Tomorrow?

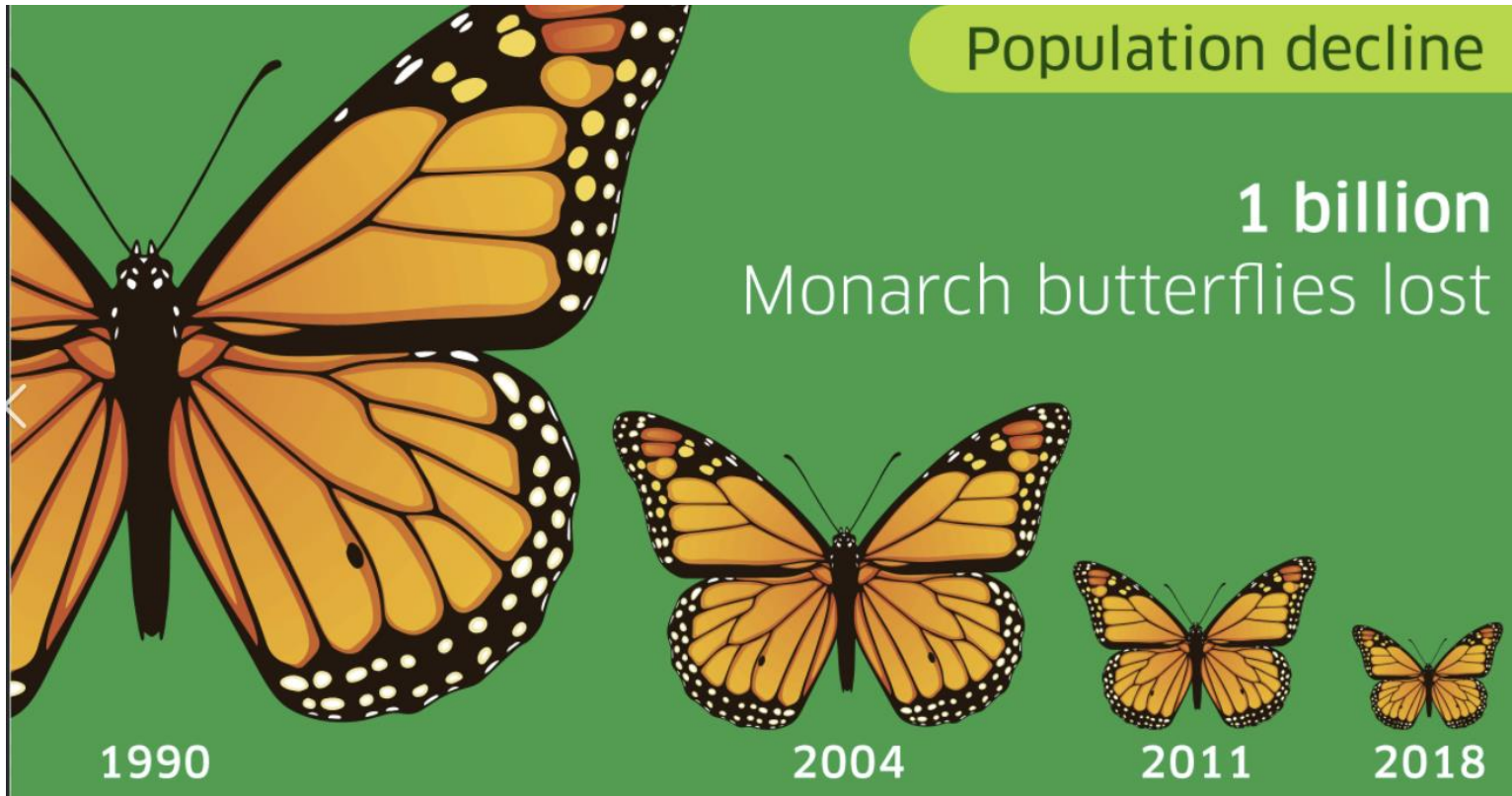
- How can our garden better serve our community and environment?



- Evolving
- Finding new purpose
- Engaging
- Mission

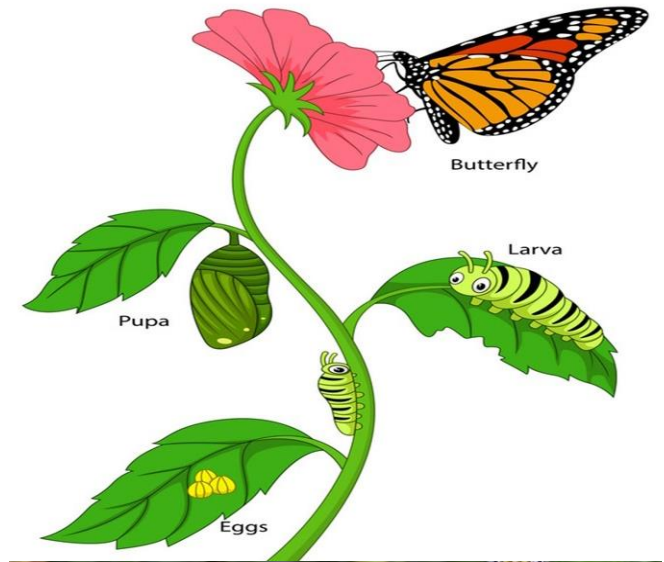


Monarchs are dependent on healthy plant environment

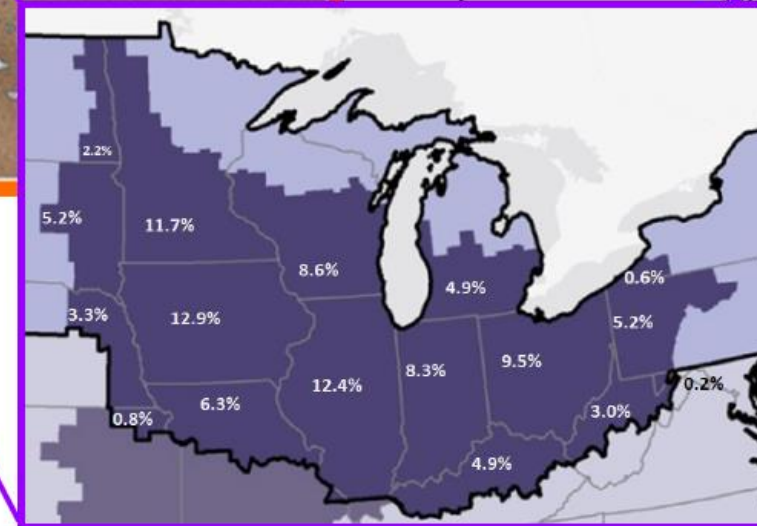
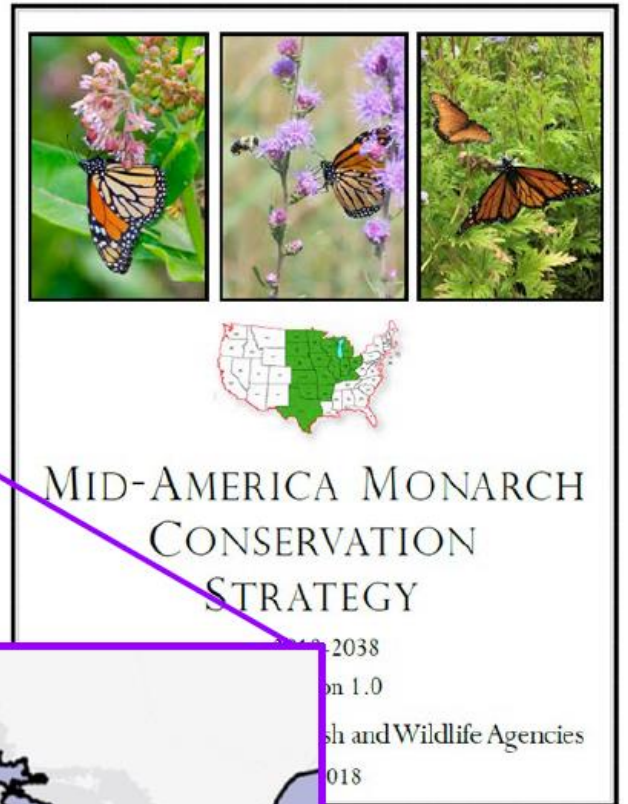
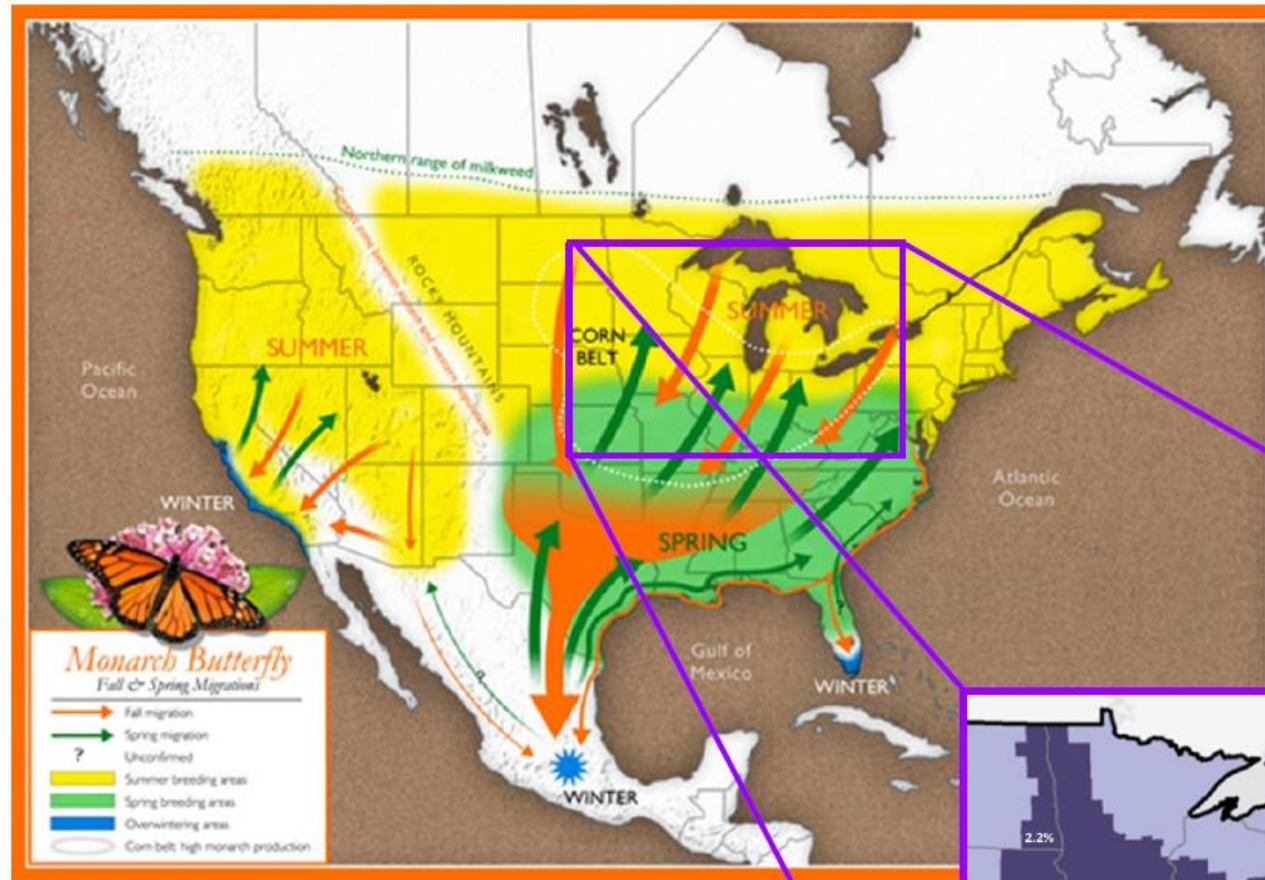


No Milkweed = No Monarchs

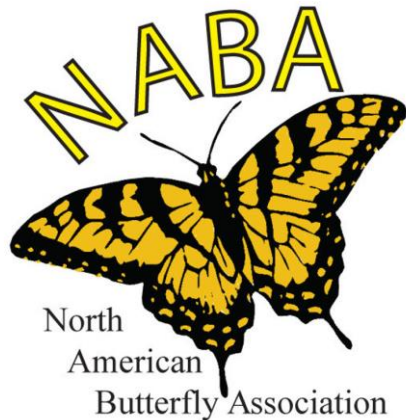
Life Cycle of Butterfly



Monarch's Amazing Migratory Story



A few of the many trying to help save the Monarchs



Elements to create a Butterfly Sanctuary

The WEAR Garden is already well positioned to be a suitable sanctuary



Shelter from Wind

- Butterflies need bushy plants to protect themselves from strong winds
- Canopy of weeping cherries and evergreens in garden provide lots of shelter

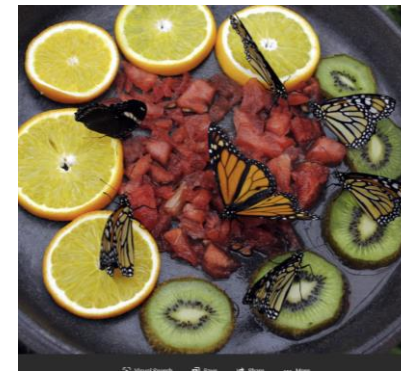
Morning Sunny Stones

- Butterflies wake up moist and like to dry themselves on flat stones in morning sun
- The new Metra provided limestones provide the perfect morning resting spot in the morning sun



Puddle Pond

- Stone basin that holds mud, stones & sand enhanced with minerals (horse manure)
- Butterflies don't drink straight water, they get the moisture needed by licking the moist stones



Fruit

- Placed in a hanging dish idea so as not to attract ants and rodents

Diversity of plants

- Host plants for laying eggs and caterpillars (Milkweed)
- Nectar Plants for Butterflies and other pollinators to feed
- Ideally plants should be native in nature with a diversity to providing blooming times throughout the season



Getting ready for spring

Seeds generously provided by:

- Chicago's Field Museum
- Dolly Foster, Landscape Horticulturist for the Oak Lawn Park District and Purdue Master Gardener and participate in the IL Monarch Project



Winter Sowing



With support from

Cold Stratification

Peirce Elementary School Activities



And Sharing Seeds with:



Common Milkweed
Asclepias syriaca
 full to partial sun
 moist to dry conditions
 3-5 Ft
 14jun-30aug



Rose Milkweed (Swamp
 Milkweed Pink and White)
Asclepias incarnata
 full to partial sun
 wet to moist
 2-6 ft
 15Jun-2Sept



Butterfly Weed
Asclepias tuberosa
 full sun
 mesic to dry
 1-2.5ft
 14 June-8sept



Ironweed
Veronia fasciculata
 full sun
 moist conditions
 2 - 4ft
 13 jul -3 oct



Joe Pye Weed
Eutrochium maculatum
 full to partial sun
 wet to moist
 3-5 ft
 18Jun-1oct



Blazing Star
Liatris spicata
 full sun
 moist
 2 -5 ft
 13Jul-28Sept



Sweet Black Eyed Susan
Rudbeckia subtomentosa
 full to partial sun
 Dry to Moist
 1.5-2.5



Purple Coneflower
Echinacea purpurea
 full to partial sun
 moist to mesic
 3.5 ft
 18jul-13aug



Perennials

Smooth Blue Aster
 Symphyotrichum laeve
 partial sun
 mesic
 2-3.5ft
 8AUG-11OCT



New England Aster
 Symphyotrichum novae-angliae
 Full sun
 Moist
 3 to 6 FT
 August to September



Short's Aster
 Symphyotrichum shortii
 partial sun
 mesic to dry
 2-3.5
 15aug-oct15



Anise Hyssop
 Agastache foeniculum
 full to partial sun
 mesic to dry
 2-3.5 ft
 June September



Perennials

Blue Vervain
 Verbena hastata
 full to partial sun
 moist
 3 - 5 ft
 29 June-19 sept



Cup Plant
 Silphium perfoliatum
 full sun to light shade
 Regular, drought tolerant
 4 to 8 FT
 July to September



Rattlesnake Master
 Eryngium yuccifolium
 Full sun
 Medium-Wet to Dry
 4 FT
 July to September



Gray headed cone flower
 Ratibida pinnata
 full sun
 mesic to dry
 4Ft
 1JUL-23OCT



Tropical Milkweed
Asclepias curassavica
 Full Sun
 Medium wet
 2 to 3 ft
 June to October



Greystripe Sunflower
Helianthus annuus
 Full Sun
 8 to 12 ft
 Summer



Mexican Sunflower
Tithonia rotundifolia
 Full Sun
 Draught Tolerant
 3 to 8 FT
 Summer to Fall



Zinnia
 Full Sun
 2 to 4 ft
 Summer



French Marigolds
Tagetes patula
 Full Sun
 5 to 18 Inches
 Summer to first frost



Brazilian verbena
Verbena bonariensis
 Full sun to part shade
 Moist, well drained
 4 to 6 ft



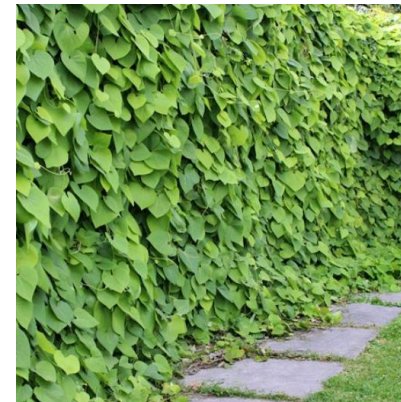
Mammoth Dill
Apiaceae Anethum graveolens
 Full sun
 Moist, well drained
 24 - 30 inches.



Hollyhock
 (Biannual, not Perennial)
Malva alcea
 Partial shade, full shade
 moderately drought-tolerant
 4 FT - Late summer, fall



Dutchman's Pipevine
Aristolochia macrophylla



Annuals & Vines

Planning what to put where

			blooming period																											
			april				may				june				july				august				september				october			
common name	sun/shade	height	wk	wk	wk	wk	wk	wk	wk	wk	wk	wk	wk	wk	wk	wk	wk	wk	wk 1	wk	wk	wk	wk 1	wk	wk	wk	wk 1	wk	wk	wk
anise hyssop	full to partial sun	2-3.5 ft																												
Rose milkweed (Swamp Milkweed)	full to partial sun	2-6 ft																												
Swamp milkweed White		2-6 ft																												
common milkweed	full to partial sun	5 Ft																												
butterfly weed	full sun	1-2.5ft																												
Purple coneflower	full to partial sun	3.5 ft																												
Joe pye weed	full to partial sun	3-5 ft																												
blazing star	full sun	2 -5 ft																												
Gray headed cone flower	full sun	4 Ft																												
Sweet Black Eyed Susan	full to partial sun	1.5-2.5																												
Smooth blue aster	partial sun	2-3.5ft																												
New England aster	Full sun	3 to 6 FT																												
Short's aster	partial sun	2-3.5																												
Blue vervain	full to partial sun	3 - 5 ft																												
Ironweed	full sun	2 - 4ft																												
Cup Plant	full sun to light shade	4 to 8 FT																												
Rattlesnake Master	Full sun	4 FT																												
Hollyhock		4 FT																												
Tropical Milkweed	Full Sun	2 to 3 ft																												
Greystripe Sunflower	Full Sun	8 to 12 ft																												
Mexican Sunflower	Full Sun	3 to 8 FT																												
Brazilian verbena	Full sun to part shade	4 to 6 ft																												
Mammoth Dill	Full sun	24 - 30 inches.																												
French Marigolds	Full sun	6 to 18 inches																												

While there are varieties already in the garden that bloom late April and May a few of the IL natives that we could use are:

- Golden Alexander
- Wild Bergamont
- Stiff Tickseed
- Spiderwort
- Foxglove Beardstong



Planning what to put where

Possibilities of placement but dependent on success of Winter Sowing

Fill in back corner
with natives that are
tolerant of less than
full sun



Move lilies to hillside,
move Catnip (which
pollinators love) to edges
to open center area for
taller natives needing
full sun

Swamp and Butterfly
Milkweed between roses

Fill in open areas in
front and back of
sign with color from
Zinnas and Mexican
Sunflowers

Planning what to put where

South end envisioned as being the heart of the sanctuary

Dutchman's Pipevine on wall

Common Milkweed and Hollyhocks in front of wall

Muddle Pond

Hanging fruit plate under Cherries

Common Milkweed, Hollyhocks to create wall in front of Weeping Cherries

Swamp, butterfly and Tropical Milkweed in front

Sunflowers, Common Milkweed and other natives at top of hill

Fill in bare areas in front and back of signs



How you can get involved

If you would like to be added to our garden volunteer email list, send us your contact details to WEARorg@gmail.com

Also visit our FB page or website WEARChicago.org



[Home](#) [About WEAR](#) [Events and Projects](#) [Get Involved](#) [Contact WEAR](#)

Events, Projects and Priorities

WEAR Yard Sale



We plan a neighborhood wide yard sale each summer to get people out in the neighborhood and get rid of some of our old treasures!

WEAR Garden



Having a big sale, on-site celebrity, or other event? Be sure to announce it so everybody knows and gets excited about it.

WEAR Socials



WEAR has porch socials where neighbors are encouraged to say hello and more formal events. More to come in 2021 we hope!

Peterson Ridge Station



Public Green Space in WEAR?



Peirce School of International Studies

