

# WELCOME TO THE TLHMSGROUP



## ENTER THE WALK: YOUR WAY EXPERIENCE



Tallahasseemsgroup@gmail.com | 850-888-2414 | tlhmsgroup.org



# Thank you joining our 2025 Walk Experience

**Walk MS Info**

**Vendors**

**Support TLHMS**

**Get Involved**

**Sponsors**

**Special Thanks**





# Tallahassee Big Bend, FL- March 15

 [Walk MS: Your Way 2025](#)

[Join Our Team](#)

[Donate to this Team](#)

**Saturday, March 15, 2025**

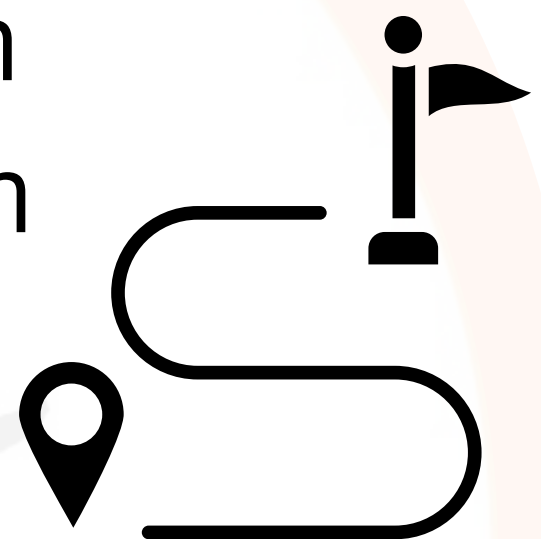
Doors Open 9:00am

Walk Starts 10:00am

**WALK DISTANCE:**

**1 Lap = .25 mile**

**(No Present Distance Req.)**



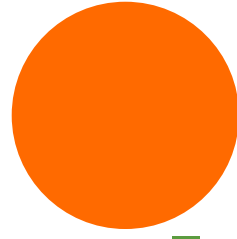
Visit our National MS Society [Walk MS page](#)

Click [here](#) or scan to  
donate to our  
\$10,000 Goal



# Vendor Map

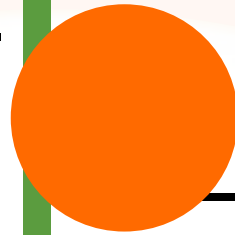
Be sure to stop by each of our Vendors!



Girl Scouts Troop

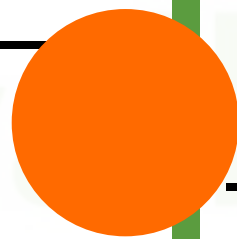
Social Beauty Boss  
Avon

Zaire Energy



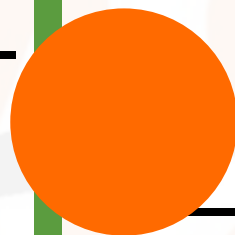
Simply The Best  
Famous Haircare Cente

Purium - The  
Transformation  
Company



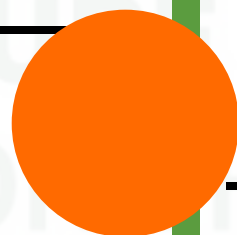
Celica Massage

FAMU Pharmacy  
Alumni Council



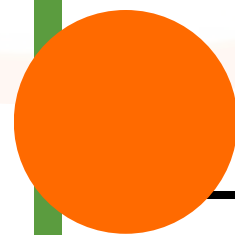
Stretch Zone  
Offering Free  
Stretches & Raffle

Club Pilates  
North



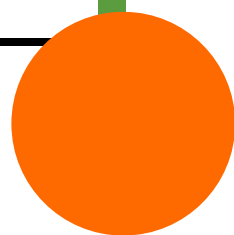
Purelife Wellness  
Studio  
Offering Raffle

FAMU Medical  
Marijuana Education  
and Research Initiative  
(MMERI)



TurnHill  
Communications

Food:  
Seasoned With Grace  
XO Italian Ice  
Big D BBQ



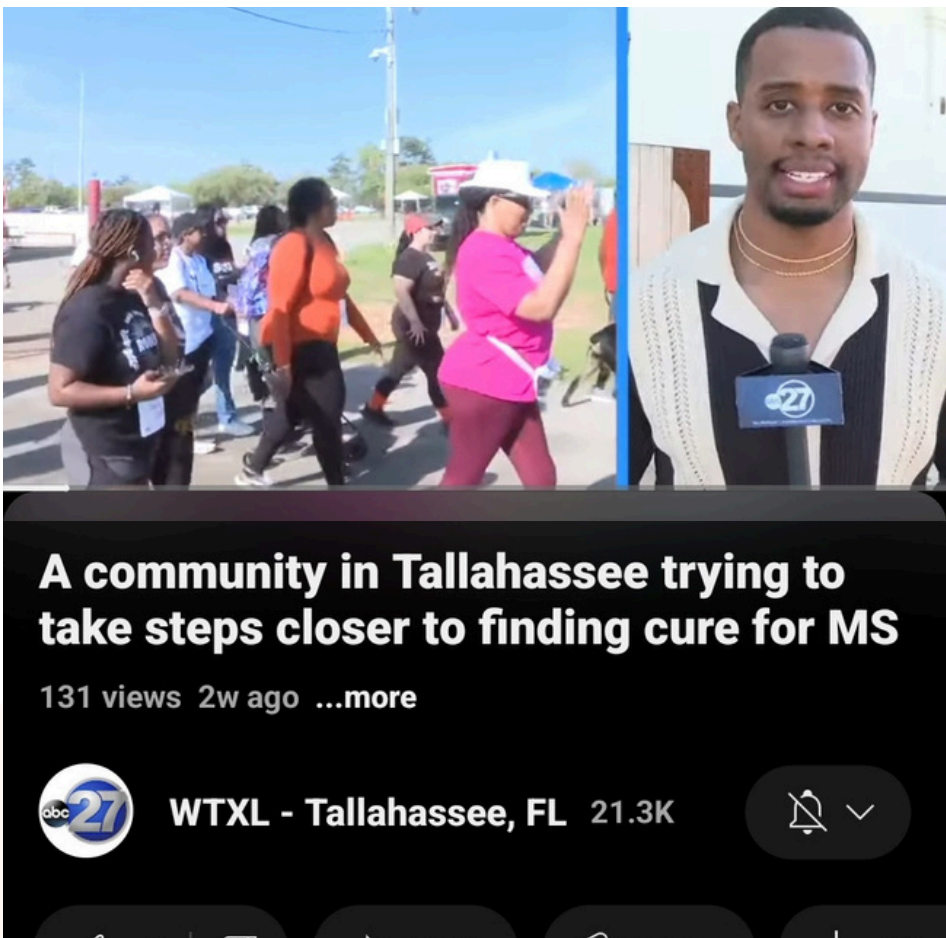
We're incredibly grateful to our sponsors, vendors, and volunteers for their generous support in helping us empower our MS community in the Greater Tallahassee and Big Bend area.





# Local Initiatives

Here's a look at some things happening locally with our TLHMSGROUP



## National Multiple Sclerosis Society Public Policy Conference



Visit our [website](#) for more information and view our calendar





# Get Involved

## Connection Opportunities

Community, education and group conversations  
[Find a group in your area or online »](#)



Find community anytime — anywhere  
[Find an online MS community »](#)

Listening ear, one-on-one conversations  
[Learn more »](#)

Education, resources and support  
**Call 1-800-344-4867**  
[Learn more »](#)



Connect with others who understand MS



Build your network of support



Get connected



National  
Multiple Sclerosis  
Society

Together We Are Stronger.

## It's MS Awareness Week: March 9-15

Together we are telling MS it ends with us! Let's raise awareness, create community and stand up to this disease. Advocate for change, Participate in Research, Join the Community, Volunteer or Donate in support of others building MS awareness, because  
**#MSEndsWithUs**

Our community can also support our TLHMSGROUP initiatives by donating with cash or through On My Nerves, Inc, a local non-profit founded to create collaborative and empowering opportunities for local individuals affected by Multiple Sclerosis



Make a tax deductible donation today



# Sponsors



We're incredibly grateful to our sponsors for their generous donations in supporting our local initiatives and helping us empower our MS community in the Greater Tallahassee and Big Bend area.



# Special Thanks

## Walk Champions / Coordinators

Natasha Acoff

Corrine Taylor

Self Help Group

WTXL

WCTV

## Volunteers

850 Kings®

FSUS Honor Society

## National MS Society

Walk Your Way Team

Bike MS Team

North Florida Chapter



#MSENDSWITHUS

