

FLORENZA.CO.,LTD

Y@yöö



## Services.....

DESIGN SOLUTION  
INTERIOR DESIGN  
PERSONAL CONSULTANT  
STRATEGIC FACILITY PLANNING  
PROJECT MANAGEMENT

CONSULTANT  
CONTRACT NEGOTIATION

BUYER  
PERSONAL STYLIST  
PROCUREMENT  
SOUVENIRS  
UNIQUE LADIES'WEAR  
YOGA INSTRUCTOR

Yöo

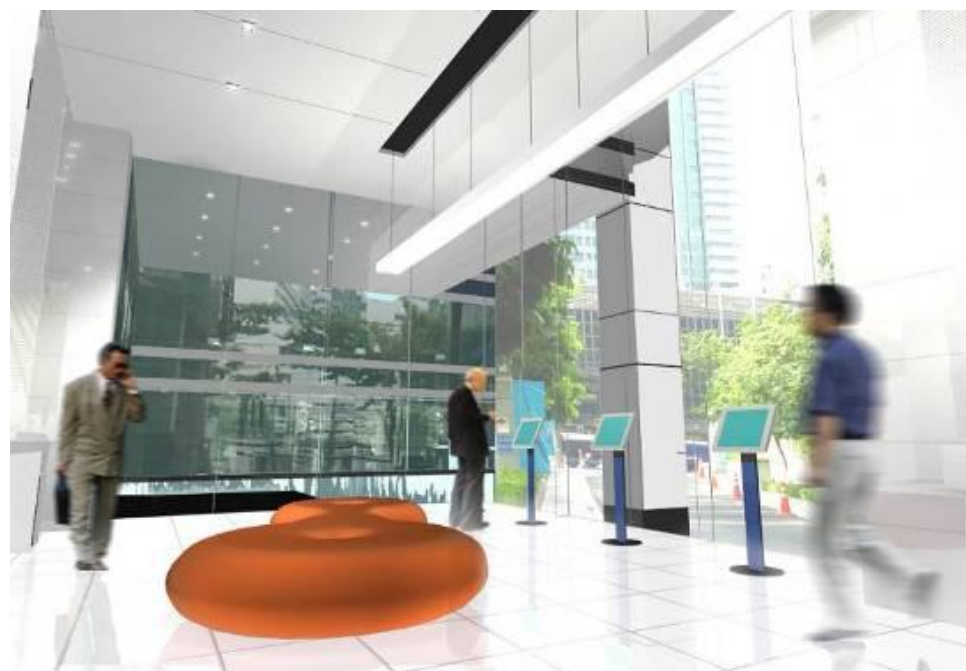
## Market Sectors.....

Hospitality

Lifestyle

Residential

Workplace





## 25 years experiences

### Servicing Clients from Thailand in

Bahrain	Amsterdam
Bangladesh	Australia
Cambodia	Dubai
Shanghai	Germany
Xiamen	Kenya
Beijing	Ireland
France	Italy
Hong Kong	Maldives
Macao	New Zealand
India	Prague
Indonesia	Vienna
Japan	Seashells
Korea	United Kingdom
Laos	United State of America
Malaysia	
Morocco	
Myanmar	
Philippines	
Pakistan	
Singapore	
Vietnam	

# Awards

## INTERNATIONAL HOTEL AWARDS 2012-2013

“Highly Commended”



## ASIA PACIFIC PROPERTY AWARD 2011

“High-Rise Building Category”



## Since 2011

Global Contractor Safety Forums  
by EXXONMOBIL

“Safety Excellence Award”



## BCI ASIA TOP 10 ARCHITECTS

“South East Asia Awards 2011”

“South East Asia Awards 2010”

“South East Asia Awards 2009”



## INTERNATIONAL HOTEL & PROPERTY AWARDS 2013

“High-Rise Building Category” and “Golf Resort Category”



## AUSTCHAM THAILAND BUSINESS AWARDS 2008

“Best Services Company”



## THAILAND PROPERTY AWARDS 2008

“Best Interior Designer Award”



## BCI ASIA TOP 10 ARCHITECTS

“South East Asia Awards 2007”



## DUPONT ANTRON DESIGN AWARD

Three Regions





## Our Mission

Good listener & Best Partner

Best design solution

Best consistent  
service

Best design result

Best design value

# Our Clients

**ExxonMobil**



**Carlsberg**

**CB Richard Ellis**



**NOVARTIS**



**JONES LANG LASALLE**



**Yves Rocher**

**QANTAS**



**Westpac**



**Sun**  
microsystems



**Microsoft**

**HERBERT SMITH**



**CREDIT SUISSE** | **FIRST BOSTON**



**DeSter · ACS**  
asia & pacific

**ERICSSON**



**KPMG**



**TISCO** Bank

**JPMORGAN CHASE & Co.**

**VANGUARD**  
INTERIORS

ABOUT  
US

# Our Clients

aurecon



FPD savills  
INTERNATIONAL PROPERTY CONSULTANTS



ธนาคารกสิกรไทย  
KASIKORNBANK 嘉华农民银行



HSBC

avanade®



Standard Chartered



Johnson  
Stokes  
& Master

Bangkok Bank  
ธนาคารกรุงเก่า



P&G

KIM ENG



microS FIDELIO

Grant Thornton

Deloitte Touche  
Tohmatsu

Etna



AtwoodOceanics

MARCO POLO  
DEVELOPMENTS LTD

FIRST  
UNION

Inchcape

ABOUT  
US





# Completed Projects

## Hospitality & Lifestyle 2014-present

- Jaspal Retails, Bangkok, Thailand
- Nikanti Procurement & Consultant, Nakornpathom, Thailand
- Sommerset Serviced Apartment Sukhumvit 23, Bangkok, Thailand
- Nikanti Golf Club, Nakornprathom, Thailand
- Oleander, Bangkok, Thailand
- Radisson Sukhumvit 13 renovation, Bangkok, Thailand
- Poipet Casino Proposal, Cambodia

## Hospitality & Lifestyle 1991-2014

- Waldorf Astoria Hilton Hotel, Bangkok, Thailand  
(local interior design review)
- Virgin Active Health Club, Singapore
- Nikanti Golf Club, Nakornprathom, Thailand
- Cape Yumu, Phuket, Thailand
- Maiton Island Resort, Phuket, Thailand
- Laguna Beach Resort, Phuket, Thailand
- Holiday Inn Guijing, Shanghai, China
- Cathay Pacific Lounge, Bangkok, Thailand
- Qantas Lounge, Bangkok, Thailand
- Dhaka Country Club, Dhaka, Bangladesh
- Samui Akaryn, Samui, Thailand
- Anantara Essaouira, Morocco
- Billabong Surf Club, Samui, Thailand
- Canadian Embassy & Residence, Hanoi, Vietnam



# Completed Projects

## Residential 2014-present

- Supreme Ville Renovation
- Thim & Cameron House, Sukhumvit 31
- K Mam The Tree Interchange
- Town Plus PrachaUthit
- Collezio Condo
- Donsak House New Design & Renovation, Surajthani, Thailand
- Chapter 1 (K Jesda\_SCG)
- King power houses Khaoyai & Chiangmai

## Residential 1991-2014

- Northpoint Penthouse, Pattaya, Thailand
- Private Residence at Hua Hin, Thailand
- Private Residence Donsak, Suratthani, Thailand
- Wanglee - Baan Suan Plu Condo, Thailand
- President Park Condominium, Bangkok, Thailand
- Maple Place, Beijing, China
- Supreme Ville Condominium, Bangkok, Thailand
- Oakwood, Japan & Bangkok, Thailand



# Completed Projects

## Workplace 2014-present

- Grant Thornton Office Renovation Concept, Bangkok, Thailand
- Jaspal Headquarter, Bangkok, Thailand [4,000sqm]
- SAP Design Proposal, Bangkok, Thailand
- The Box Design Proposal – Sukhumvit 11, Bangkok, Thailand
- Teratada Design Proposal, Bangkok, Thailand
- Linklater Concept Design, Bangkok, Thailand
- Borgwarner, Rayong, Thailand
- Qatar Medical Center, Athani - Bangkok, Thailand
- Jaspal Boutique Office, Bangkok, Thailand
- Lyreco Proposal, Bangkok, Thailand [1,000sqm]

## Workplace 1991-2014

- P&G – Emporium Tower
- Unilever SCB Tower, Bangkok, Thailand [8,000sqm]
- Publicis
- Microsoft
- Savills
- Citibank
- Tisco
- Siam City Cement Office Fitout, Bangkok, Thailand [8,000sqm.]
- Grant Thornton Office Fitout, Bangkok, Thailand
- Ford (Thailand) - Corporate Headquarters, Bangkok, Thailand [14,300sqm.]
- ExxonMobil, Sriracha, Thailand(disaster recovery)
- Bank of America Merrill Lynch, Bangkok, Thailand
- Siam City Bank Renovation, Bangkok, Thailand
- HSBC Restacking, Bangkok, Thailand
- Citibank, Bangkok, Thailand [22,000sqm. Interchange Building]
- ACE Insurance, Bangkok, Thailand [9,200sqm]



# Completed Projects

## Workplace 1991-2014

- ACE insurance, Thailand [9,000sqm.]
- AIA Surawong, Bangkok, Thailand [22,000sqm.]
- Tesco Lotus Bangkok, Thailand
- ExxonMobil, Thailand [year 1992 - now]
- Mobil, Bangkok, Thailand [2,600sqm.]
- Microsoft Thailand, Bangkok, Thailand
- Unilever Office, Bangkok, Thailand [9,000sqm]
- Proctor & Gamble, Bangkok, Thailand
- Baker McKenzie, Bangkok, Thailand
- Bangkok Bank Call Centre & Retail, Thailand
- Sime Bank, Bangkok, Thailand
- Price Waterhouse, Bangkok, Thailand
- Swire Beverages, HK
- Delphi
- Netcon
- Digital, Bangkok, Thailand
- Chi Cheung, HK
- Siemens, Bangkok, Thailand
- IDP, Bangkok, Thailand
- Dairy Farm, HK
- Novartis, Bangkok, Thailand
- Bank of Thailand, Bangkok, Thailand
- Standard Chartered Hong Kong [55,000sqm]
- Standard Chartered Nakornthon Bank, Bangkok, Thailand [25,000 sqm]
- JP Morgan Chase Consolidation [25,000sqm]
- Inchcape
- Singer, Bangkok, Thailand
- Aetna, Bangkok, Thailand
- Ayudhya CMG, Bangkok, Thailand
- Cargill, Bangkok, Thailand
- UBS Warburg





## Testimonials.....

Thanks go to you for sticking with it to the end!  
Yes, I would consider using your company again,  
I think you did a great job considering the complexity  
of renovating space around the staff.

Good work and well done.

Overall impression of the company is very  
professional, efficient and effective.  
Thanks again for the great job.

**Jeffery D. White, Ford Land | Electricity Programs Manager  
Ford Office Headquarters, Bangkok**

I have many good experiences with  
TBP especially ..... and Yupa,  
I know them more than 15 years.

**Nigel J. Cornick,  
CEO of Nigel Land, Thailand  
Former CEO of Raimon Land Public Co., Ltd., Thailand**



# Testimonials

Among the best in alignment with Exxon Mobil Group  
Delivery Model

Good local content, value for money

Excellent service from ..... & Yupa.

Superior client focus & support 90+% of time.  
Client alliance partner, excellent safety focus,  
practical / functional design

**Bill Malone, Major Projects and Facilities Manager  
ExxonMobil VTT Restacking Project, Bangkok**

Excellent Service

**Christopher Chang Chien Wei, Project Manager  
ExxonMobil HRH Project, Bangkok**







# GRANT THORNTON BANGKOK, THAILAND

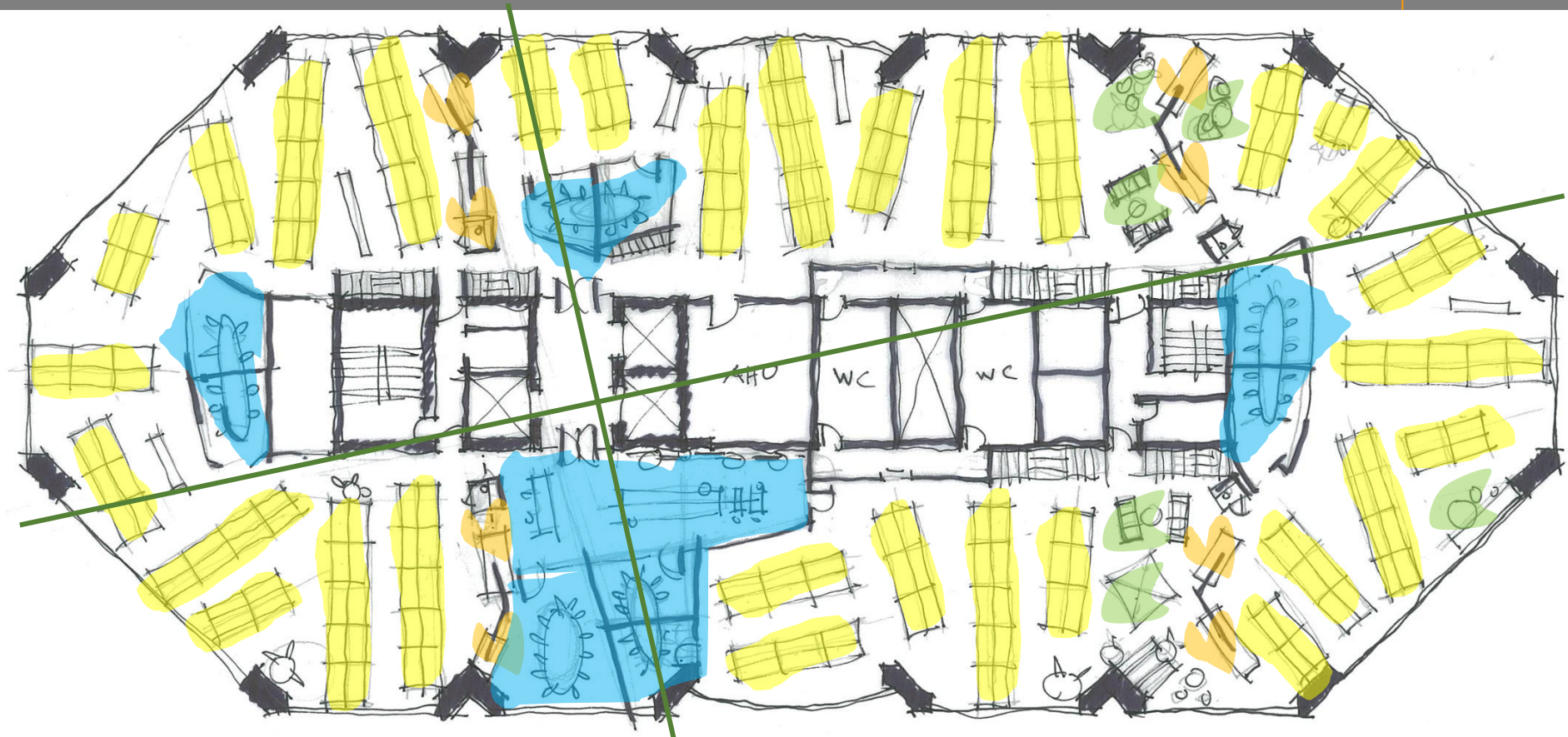


task/workplace

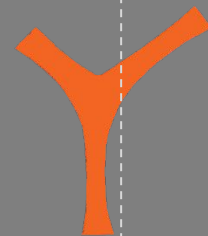
coffee/utility/phone box

conciierge/collaboration/meeting

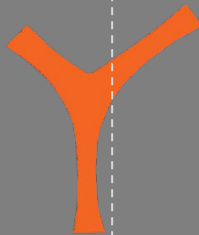
print/filing/storage



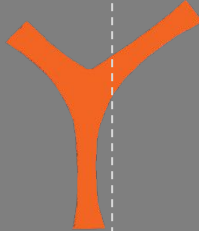
# TERADATA BANGKOK, THAILAND



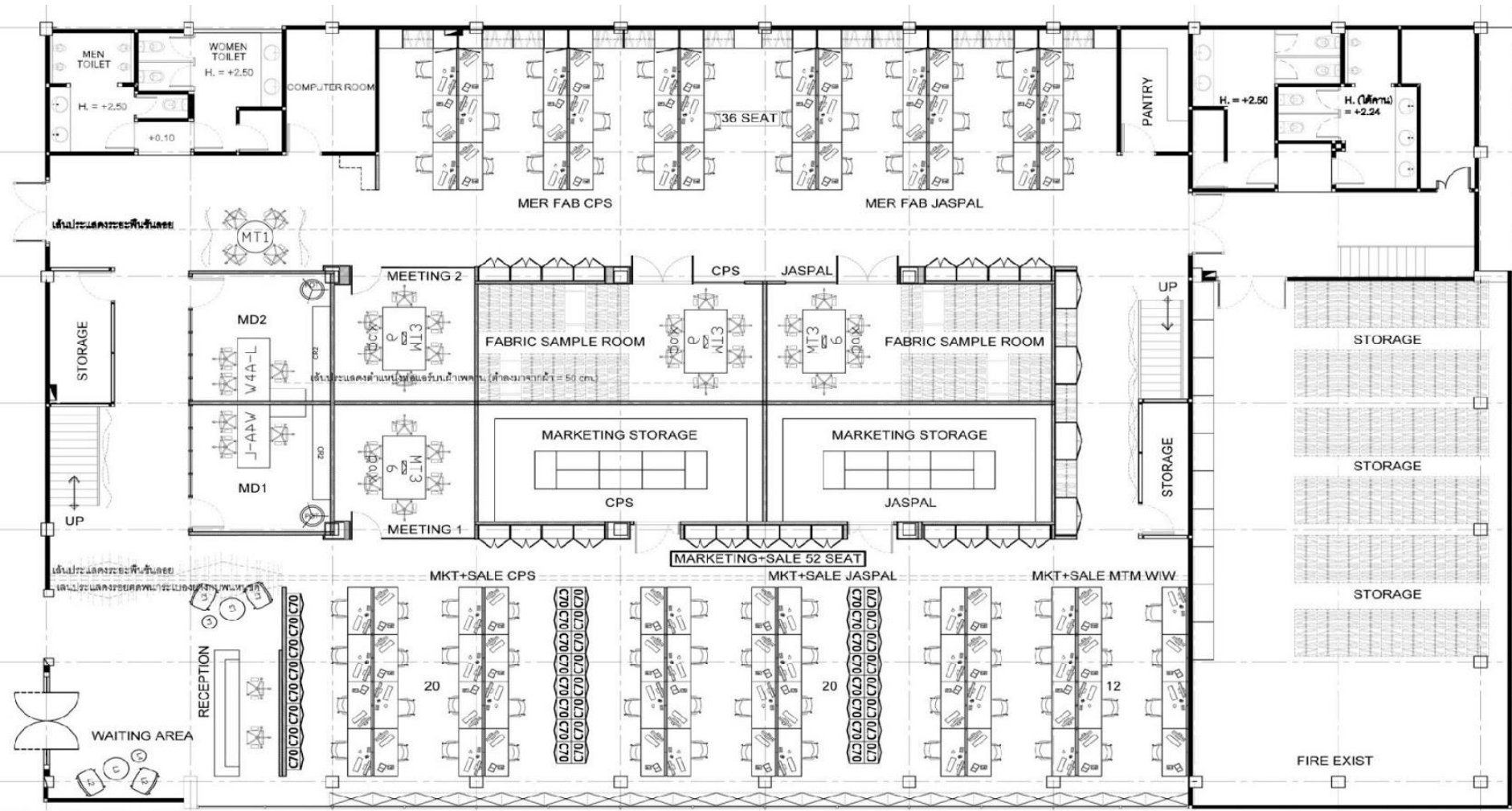
TERATADA  
BANGKOK, THAILAND



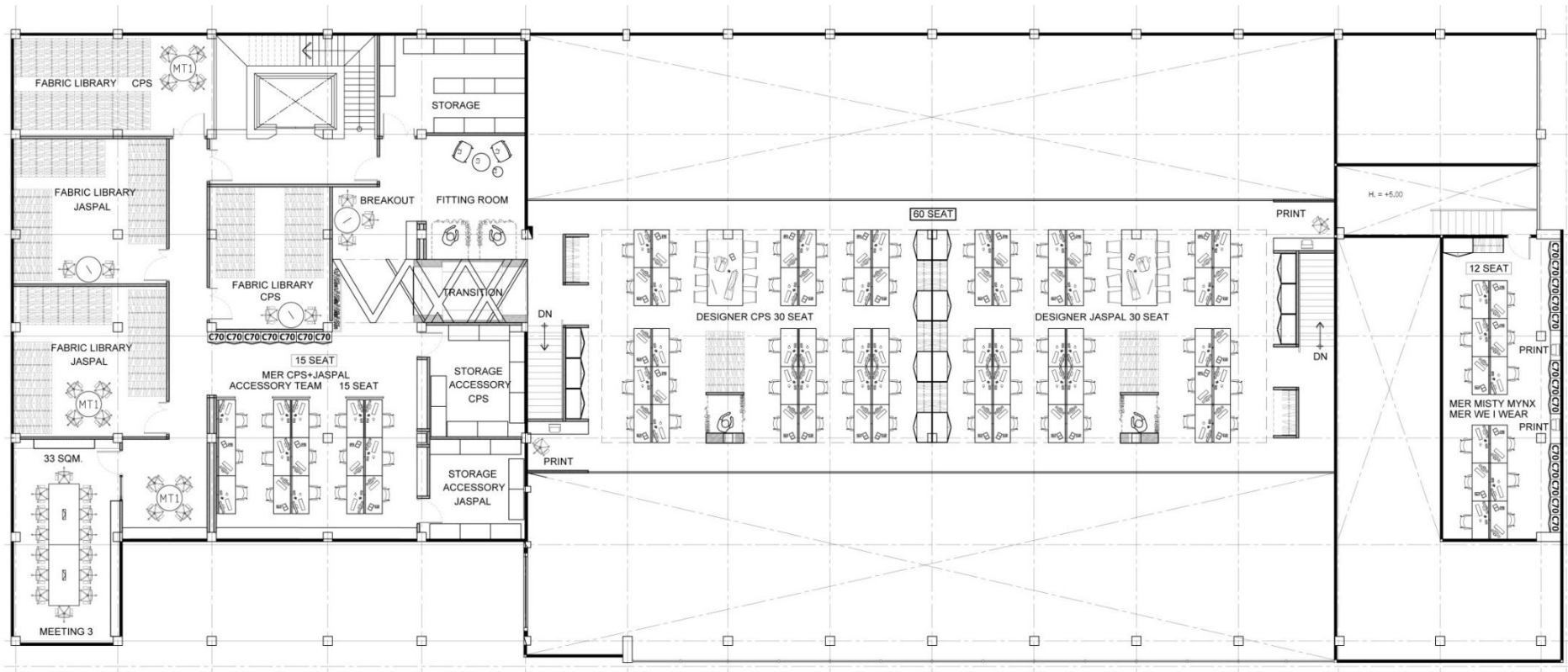
TERATADA  
BANGKOK, THAILAND



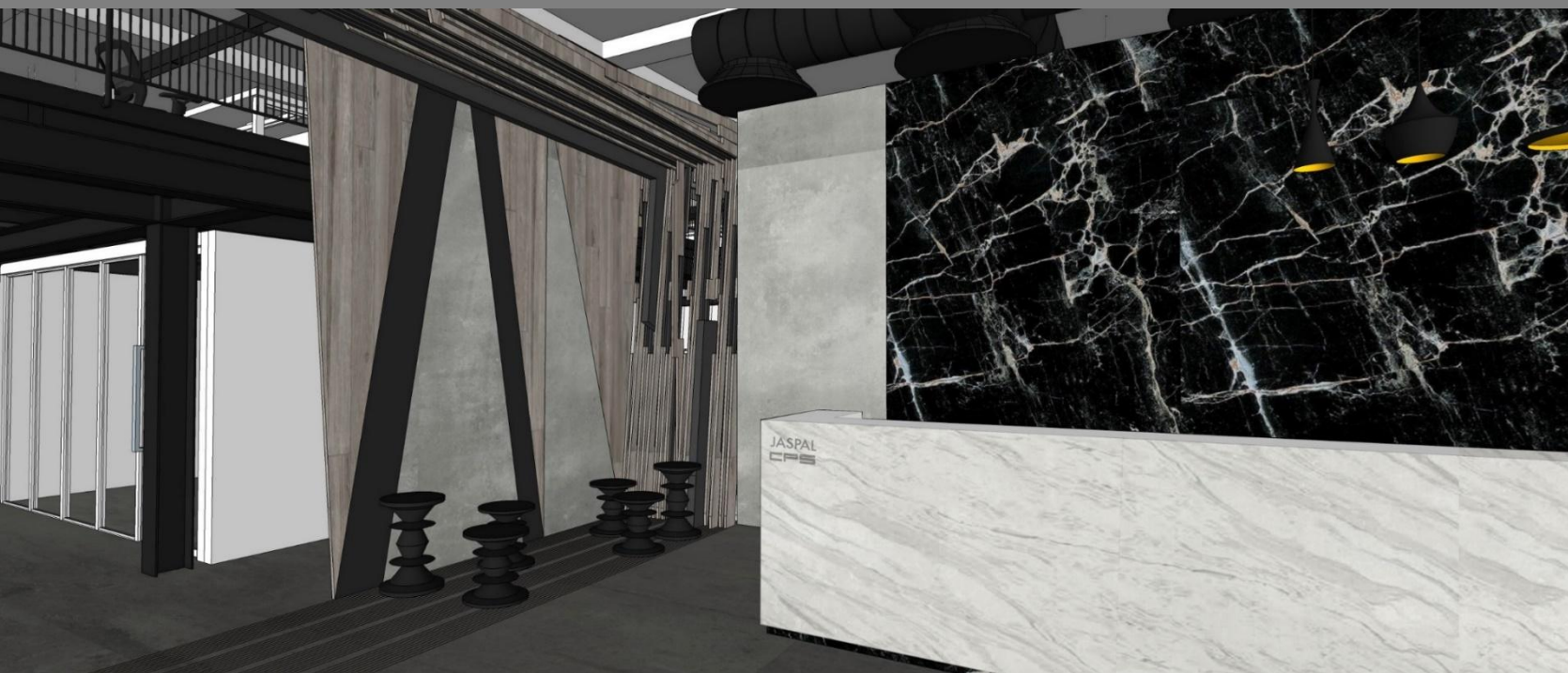
# JASPAL BOUTIQUE OFFICE BANGKOK, THAILAND



# JASPAL BOUTIQUE OFFICE BANGKOK, THAILAND



# JASPAL BOUTIQUE OFFICE BANGKOK, THAILAND





# JASPAL BOUTIQUE OFFICE BANGKOK, THAILAND

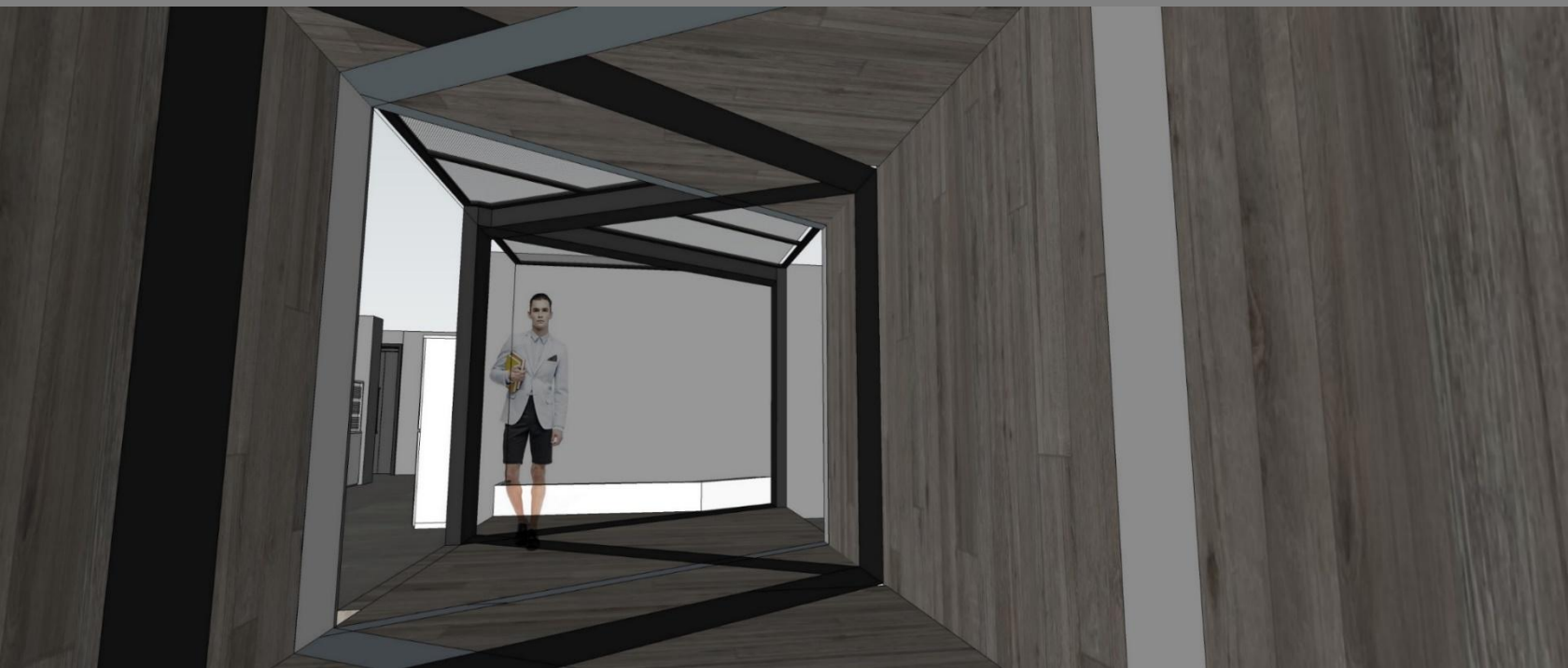


y'yo

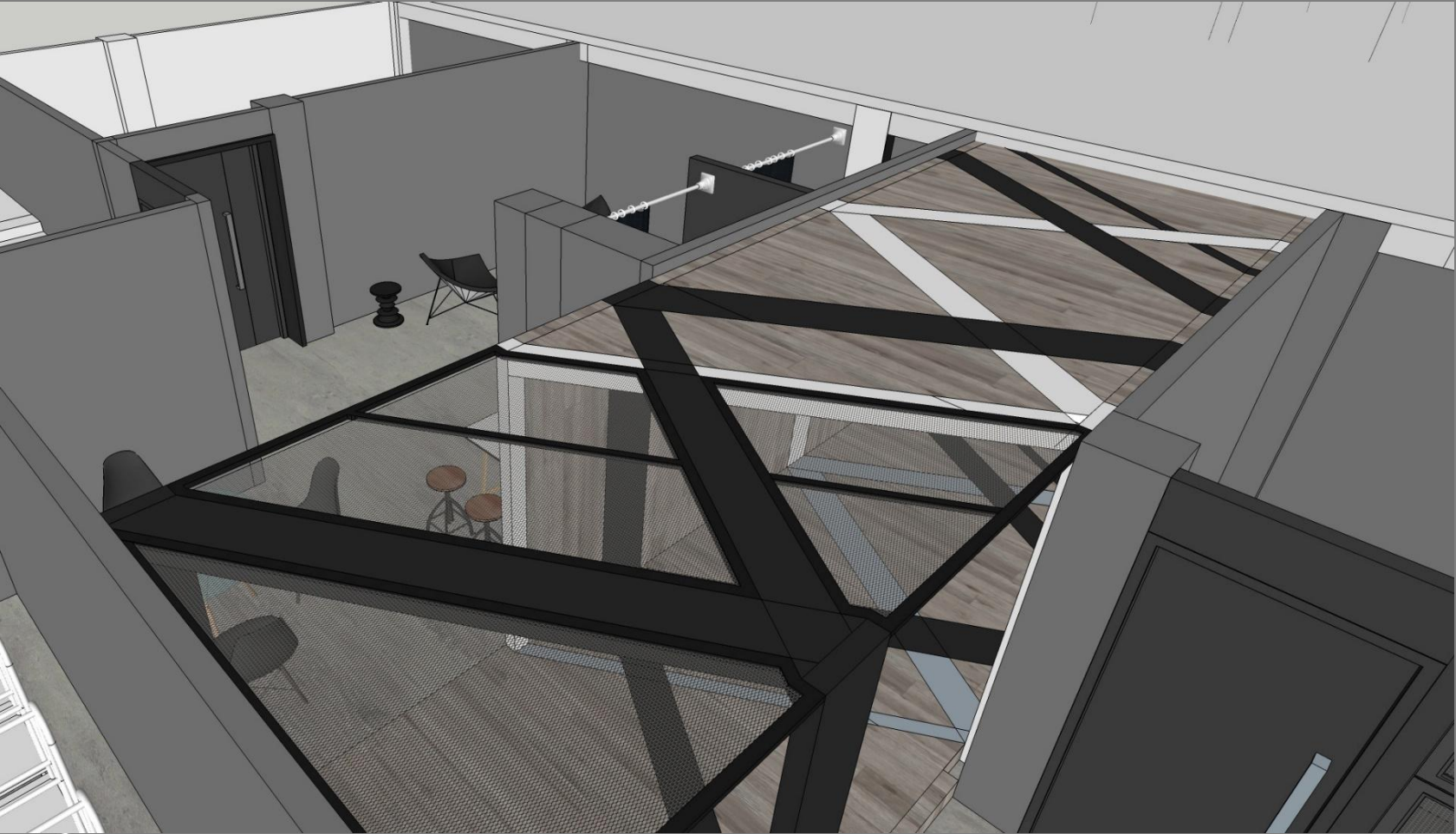
# JASPAL BOUTIQUE OFFICE BANGKOK, THAILAND



# JASPAL BOUTIQUE OFFICE BANGKOK, THAILAND



# JASPAL BOUTIQUE OFFICE BANGKOK, THAILAND



# ROWE AND CO REFURBISHMENT YANGON, MYANMAR



# ROWE AND CO REFURBISHMENT YANGON, MYANMAR



# ROWE AND CO REFURBISHMENT YANGON, MYANMAR



# ROWE AND CO REFURBISHMENT YANGON, MYANMAR





# AURECON BANGKOK



AURECON  
BANGKOK



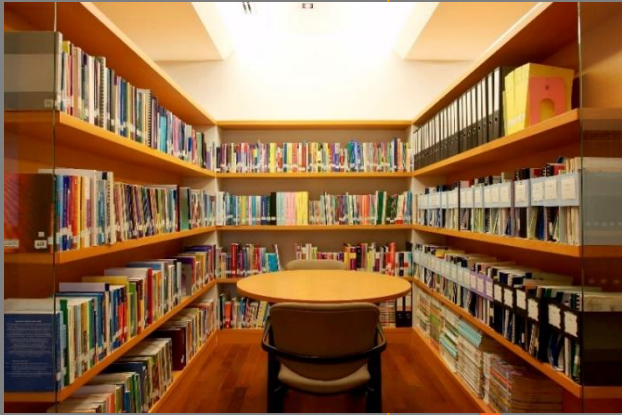
CARLSBERG  
BANGKOK



# SUN MICROSYSTEMS BANGKOK, SINGAPORE, KL



# JOHNSON STOKES & MASTER BANGKOK



# PROCTER & GAMBLE BANGKOK



# AIA CAPITAL CENTER BANGKOK

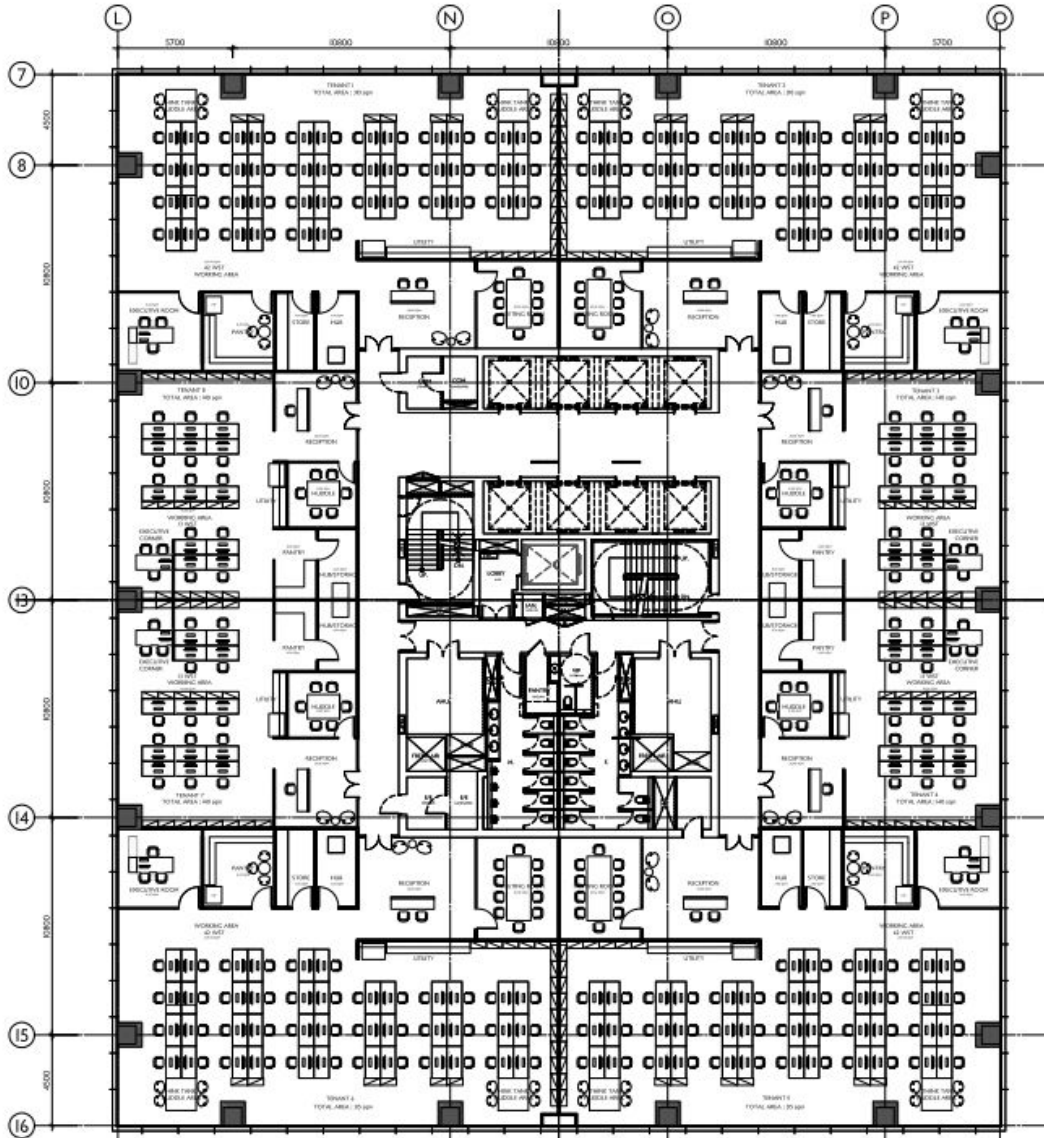


# AIA CAPITAL CENTER BANGKOK

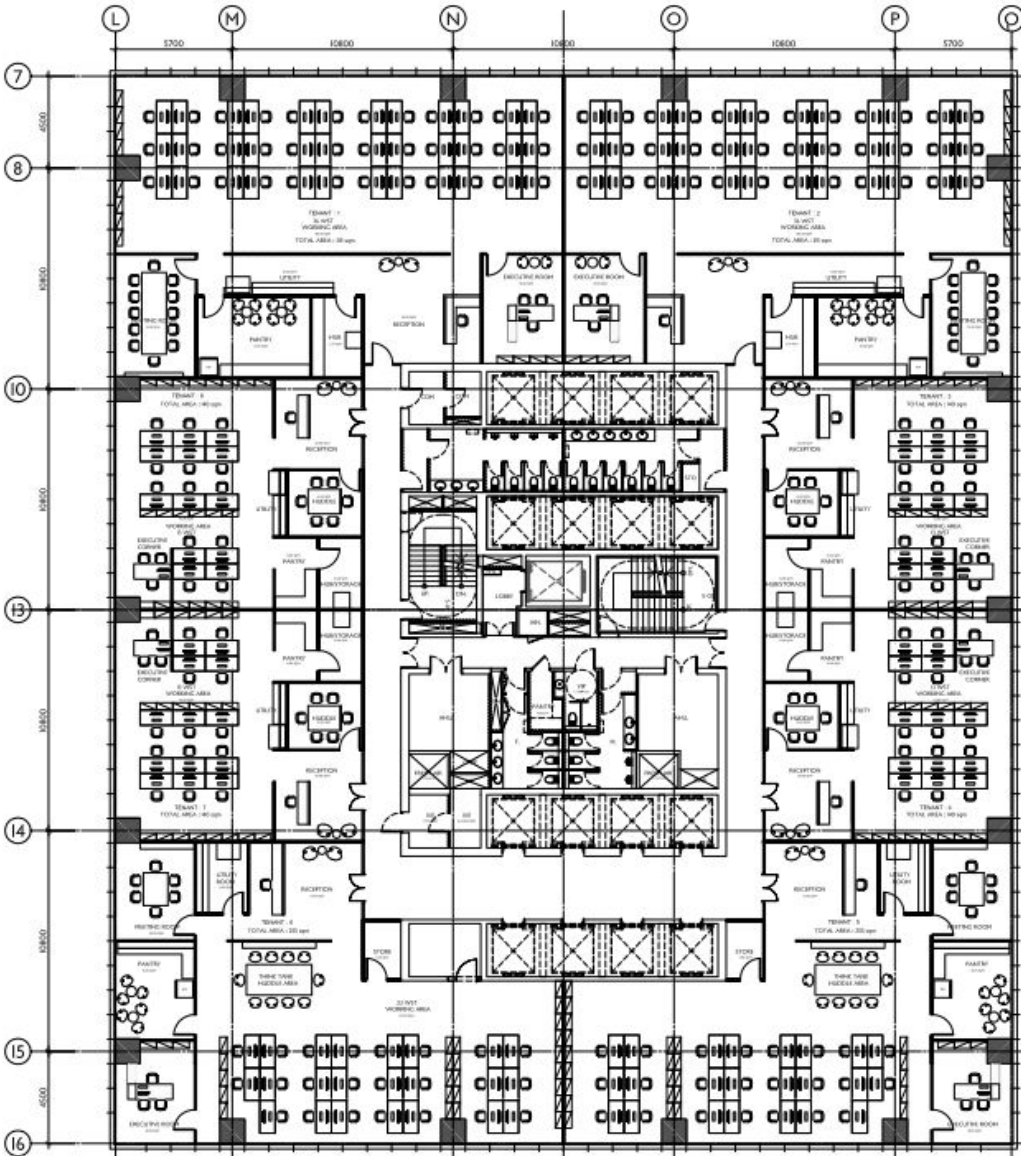




# AIA CAPITAL CENTER BANGKOK



# AIA CAPITAL CENTER BANGKOK



# AIA CAPITAL CENTER BANGKOK



# AIA BANGKOK



AIA  
BANGKOK



# EXXON MOBIL BANGKOK



# CHEVRON TEXACO BANGKOK



# UNILEVER HEAD OFFICE SCB PARK PLAZA, BANGKOK





# SIAM CITY CEMENT COLUMN TO`WER, BANGKOK



# NOVARTIS THE EMPORIUM, BANGKOK



# MICROSOFT ALL SEASONS PLACE, BANGKOK



# ACE INSURANCE (HQ) INTERCHANGE 21, BANGKOK



# ACE INSURANCE (HQ) INTERCHANGE 21, BANGKOK



# ACE INSURANCE (HQ) INTERCHANGE 21, BANGKOK



# ACE INSURANCE (HQ) INTERCHANGE 21, BANGKOK



# ACE INSURANCE (HQ) INTERCHANGE 21, BANGKOK





# PUBLICIS BANGKOK

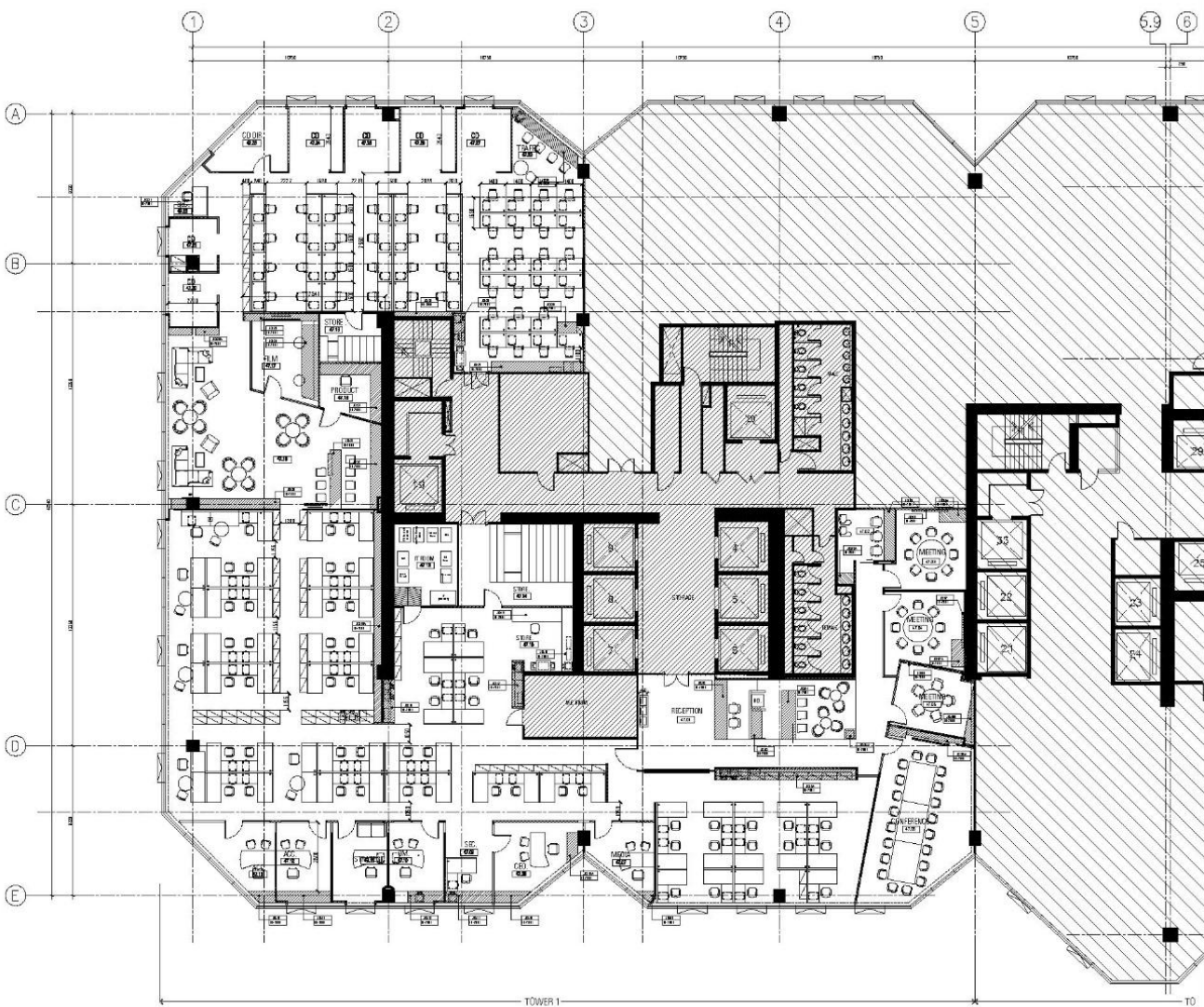


# PUBLICIS BANGKOK





# PUBLICIS BANGKOK



isisA\_15 Cad&Drawing\Drawing\041105\_option plan\4-11-04 option 2.dwg, 6/23/2005 4:57:31 PM, FinePrint.pdfFactory.pc3.

# TESCO LOTUS BANGKOK



# CITIBANK INTERCHANGE 21, BANGKOK



SCIB  
BANGKOK





SCIB  
BANGKOK





# HSBC PREMIER LOUNGE BANGKOK



# BANGKOK BANK THE EMPORIUM, BANGKOK



# SCB (DESIGN PROPOSAL) BANGKOK



# STANDARD CHARTERED NAKORNTHON BANK SATHORN THANI, BANGKOK



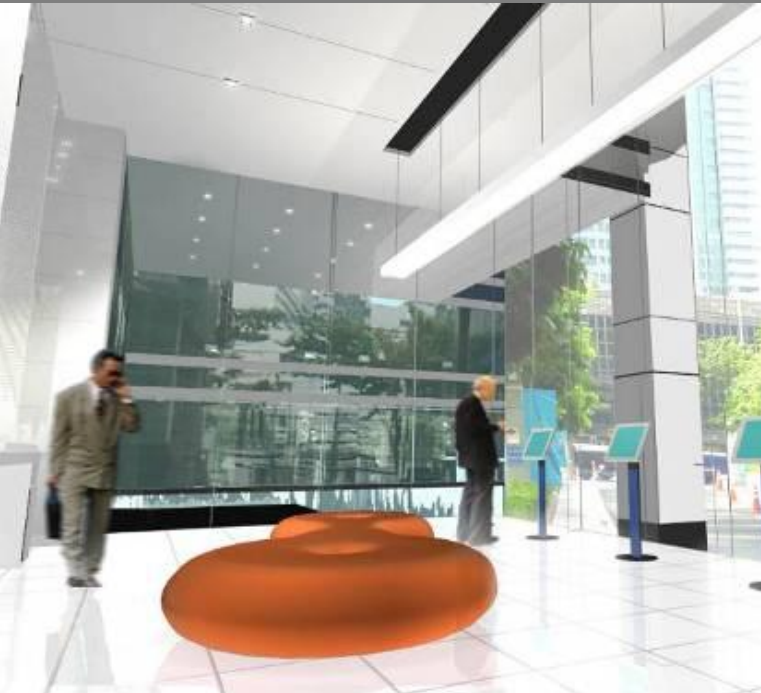
Interior Design over 25,000 sq.m.



# STANDARD CHARTERED BANK HONG KONG



# TISCO BANK BANGKOK



# BANK OF THAILAND BANGKOK



NOVARTIS  
BANGKOK





# NOVARTIS BANGKOK



# BANGKOK BANK, EMPORIUM BRANCH BANGKOK, THAILAND



# BANGKOK BANK, CALL CENTER BANGKOK, THAILAND



# EXXONMOBIL EXXONMOBIL HRH L1,4,8,16,17,18, THAILAND



# EXXONMOBIL EXXONMOBIL HRH L1,4,8,16,17,18 THAILAND



# EXXONMOBIL

## EXXONMOBIL HRH L1,4,8,16,17,18, THAILAND



# EXXONMOBIL (year 2019\_over 10,000 sqm) ALL PERSPECTIVES



# EXXONMOBIL (year 2019 \_over 10,000 sqm) ALL PERSPECTIVES





# EXXONMOBIL (year 2019 \_over 10,000 sqm) ALL PERSPECTIVES



# EXXONMOBIL (year 2019\_over 10,000 sqm)

## ALL PERSPECTIVES



# EXXONMOBIL (year 2019 \_over 10,000 sqm) ALL PERSPECTIVES



# EXXONMOBIL (year 2019\_over 10,000 sqm)

## ALL PERSPECTIVES



# EXXONMOBIL (year 2019\_over 10,000 sqm) ALL PERSPECTIVES



# EXXONMOBIL (year 2019\_over 10,000 sqm)

## ALL PERSPECTIVES



# EXXONMOBIL (year 2019 \_over 10,000 sqm) ALL PERSPECTIVES



# EXXONMOBIL (year 2019 \_over 10,000 sqm) ALL PERSPECTIVES





# EXXONMOBIL (year 2019 \_over 10,000 sqm) ALL PERSPECTIVES



# EXXONMOBIL (year 2019 \_over 10,000 sqm) ALL PERSPECTIVES



FLORENZA.CO.,LTD

Y@yöö