

A watercolor portrait of a woman with long, dark hair. The hair is rendered with vibrant blue and black pigments, creating a dramatic, ethereal effect. The woman's face is partially obscured by a semi-transparent white rectangular box containing text. Her eyes are looking slightly to the left, and her expression is serene. The background is a soft, light blue wash.

LORRAINE SIMONDS

MATERIALS LIST

*Workshops Materials
& Discount Codes*

WWW.LORRAINESIMONDS.COM

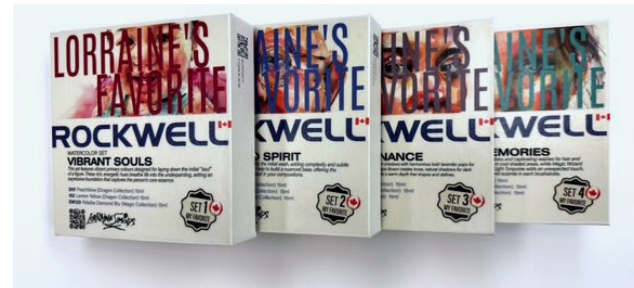
Materials

Pigment

My Essential Watercolour Palette

These are some of the core colours I reach for often in my portraits. Feel free to use your own palette with colours you enjoy or are more familiar with — I'll suggest substitutions where needed.

- Lemon Yellow - Rockwell (Cool Yellow)
- Peachblow - Rockwell (Opera Pink)
- Palaiba Diamond Blue - Rockwell (Pthalo Turquoise)
- Brilliant Orange - Rockwell (Pyrrole Orange)
- Ultramarine Deep - Rockwell
- Primary Yellow - Rockwell (Warm Yellow)
- Valentine Purple - Rockwell (Lavender)
- Burnt Ochre - Rockwell
- Lapis Brown - Rockwell (Burnt Sienna and Ultramarine mix)
- Amethyst - Rockwell (or Amethyst Genuine)
- Magic Wizard - Rockwell (Quin Gold with Burnt Ochre mix)
- Light Turquoise - Rockwell (Pthalo Turquoise and Chinese White mix)



If you don't have access to my set, don't worry! I always recommend starting with a solid primary palette and learning how to mix colours before expanding your collection.

SAVE
10%

Special Offer: Use code **LORRAINE** at Rockwell Art Canada for a 10% discount on my curated palette as well as their collection of calligraphy brushes and artist quality Papers!

ROCKWELLART.GLOBAL

Brushes

My Brush Recommendations:

- Mop or large Kolinsky Rounds – For loose, expressive washes.
- Rosemary Kolinsky Round Brush (Size 4, 6, 8, 10, 12) – Versatile for general use and soft details.
- Calligraphy Style Brushes, I use Lebenzon 1.5" Family Goat Synthetic Blend and Siberian Elk Brushes. They hold a beautiful point, makes jaw dropping organic brushmarks, a favorite for hair or landscapes. Highly responsive and comfortable to hold. These are highend brushes - not essential, but worth the investment.
- Flat Synthetic Brush – For bold, confident strokes and lifting techniques. I use the Rosemary Eradicator Brush in size small and large.

I personally prefer natural hair brushes, but what matters most is that your brush holds water well and has a good point for detail work.



SAVE
10%

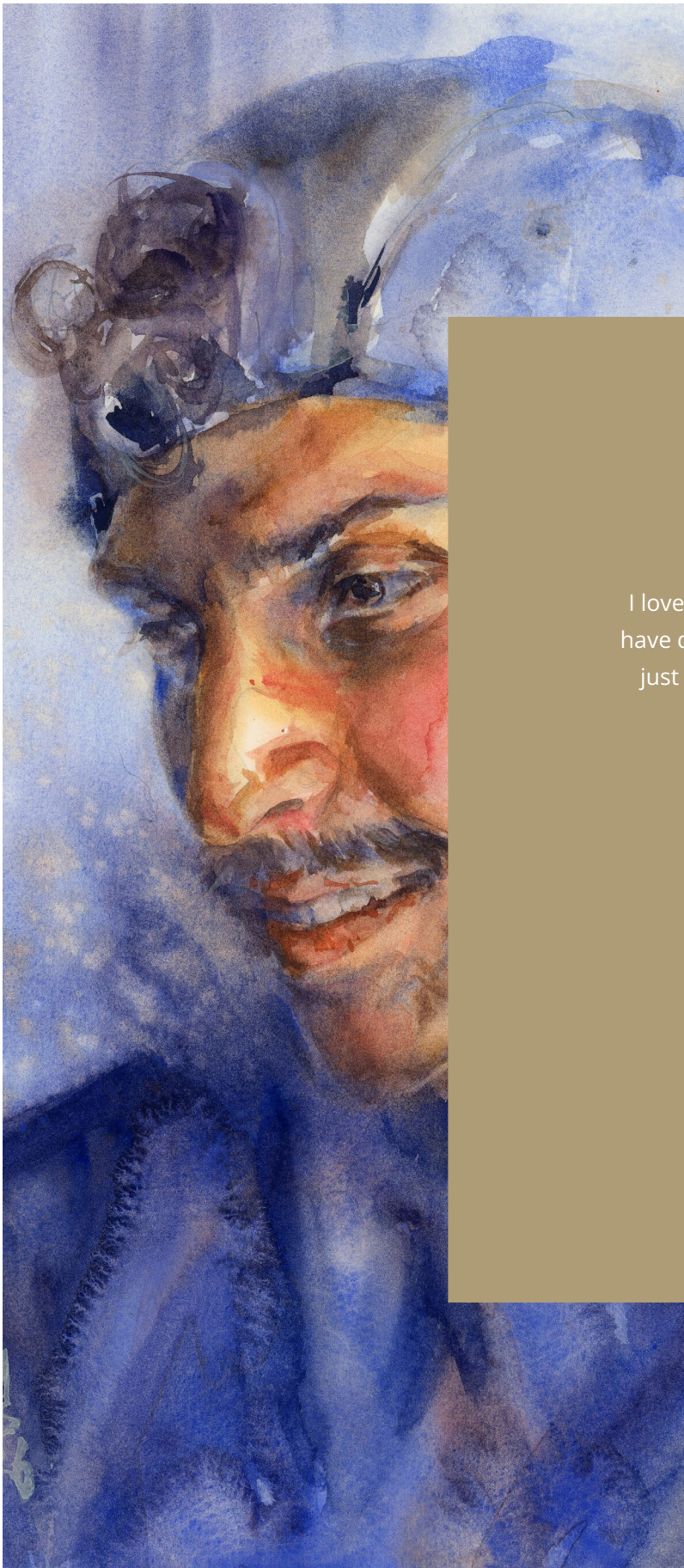
Special Offer: Use code **LORRAINERO&CO** at Rosemary & Co to save on a range of different brushes. ONE TIME USE
ROSEMARYANDCO.COM

SAVE
20%

Special Offer: Use code **LORRAINE** at Golden Maple to save on a range of different brushes.
ARTGOLDENMAPLE.COM

SAVE
20%

Special Offer: Use code **LORRAINE** at Lebenzon Brushes for a 20% discount off any of their brushes. Valid until the end of this month only. (DM me to request extension)
LEBENZON-PAINTBRUSHES.COM



Let's
CONNECT

I love hearing from fellow artists! Whether you have questions, want to share your progress, or just say hello, here's where you can find me:

Website:

www.lorrainesimonds.com

Instagram:

[@lorraine.simonds.watercolour](https://www.instagram.com/lorraine.simonds.watercolour)

YouTube:

[@LorraineSimonds](https://www.youtube.com/LorraineSimonds)

VIP Email List:

[SUBSCRIBE](#)