

Powering Biodiversity in the ROW

You are invited to attend an educational outreach event focused on the value of native plants within utility corridors and other right of way (ROW) spaces across our region. Learn more about how National Grid's BIOaudit program is using science to understand the ways that promoting and preserving biodiversity and ensuring safe and reliable power delivery can be compatible goals.

DATE: Wednesday, October 9, 2024

TIME: 9:00 am - 12:00 pm - Light refreshments will be served

LOCATION: Prickly Ed's Cactus Patch, Barneyville Road, Swansea, MA

This is an outdoor only venue and the program will include a walking exploration of habitat areas with varied terrain. Dress and plan accordingly.

**All are welcome but registration is required.
Email pricklyedscactuspatch@gmail.com to RSVP**

Speakers include:

**MariClaire Rigby,
Lead Vegetation Strategy Specialist, National Grid**

**Dr. Anand Persad,
Director of Research, Science and Innovation, ACRT**

**Jonathan Duval,
Senior Supervisor, Transmission Forestry, National Grid**

**Ryan Meccage,
Business Development Manager, ACRT**

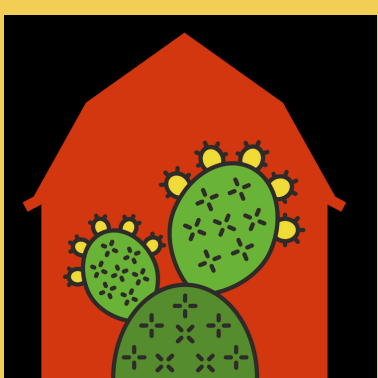
**Ryan Chopy, MSc
Consulting Utility Forester, ACRT/RI Energy**

**Cindy & Ed Moura
Prickly Ed's Cactus Patch Native Plant Emporium**

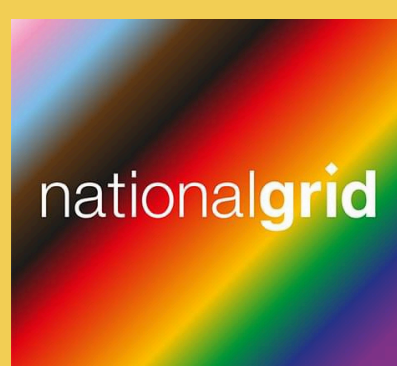
Edge habitats like those created by man made disturbances such as electrical transmission corridors offer increasingly rare opportunities to foster the biodiverse flora and fauna that thrives only in these successional habitats. Developing low growing native plant communities can ensure that utility companies meet their requirement to provide safe access to transmission lines while also creating vital habitat where nature can thrive.

Join scientists, forestry managers and small business owners for a discussion about native plants as important tools in land management. Presenters will provide scientific data on studies on soil mycorrhizae in native plants versus invasive species and on native plant population dynamics. Further discussion will describe the way that data is being used to understand the relationship between particular land management strategies and populations of pollinators and birds. A guided exploration of the ROW between Barneyville Rd. and New Meadow Ave. in Swansea, MA will facilitate a discussion about the BIOaudit process and its role in enhancing the biodiversity of native plant populations in Swansea and adjoining areas. Participants will also hear from the owners of Prickly Ed's about the ways they are working to create community connections, why what you plant matters and how they can help you get the plants you need for your projects.

The program will be of particular interest for local leaders and planners, owners of land under and adjacent to ROWs, land stewards, farmers, students, conservationists, and all who are interested in learning more about the untapped potential these unique spaces hold.



Click the logo to learn more about
Prickly Ed's Cactus Patch Native Plant
Emporium www.PricklyEds.com



Click the logo to learn more about
National Grid and land stewardship
<https://bioaudit.acrt.com/national-grid/>



Learn more about ACRT's role in advancing
biodiversity along utility corridors
<https://info.acrt.com/bioaudit>

BIOaudit™

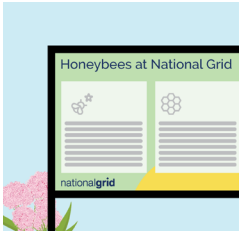
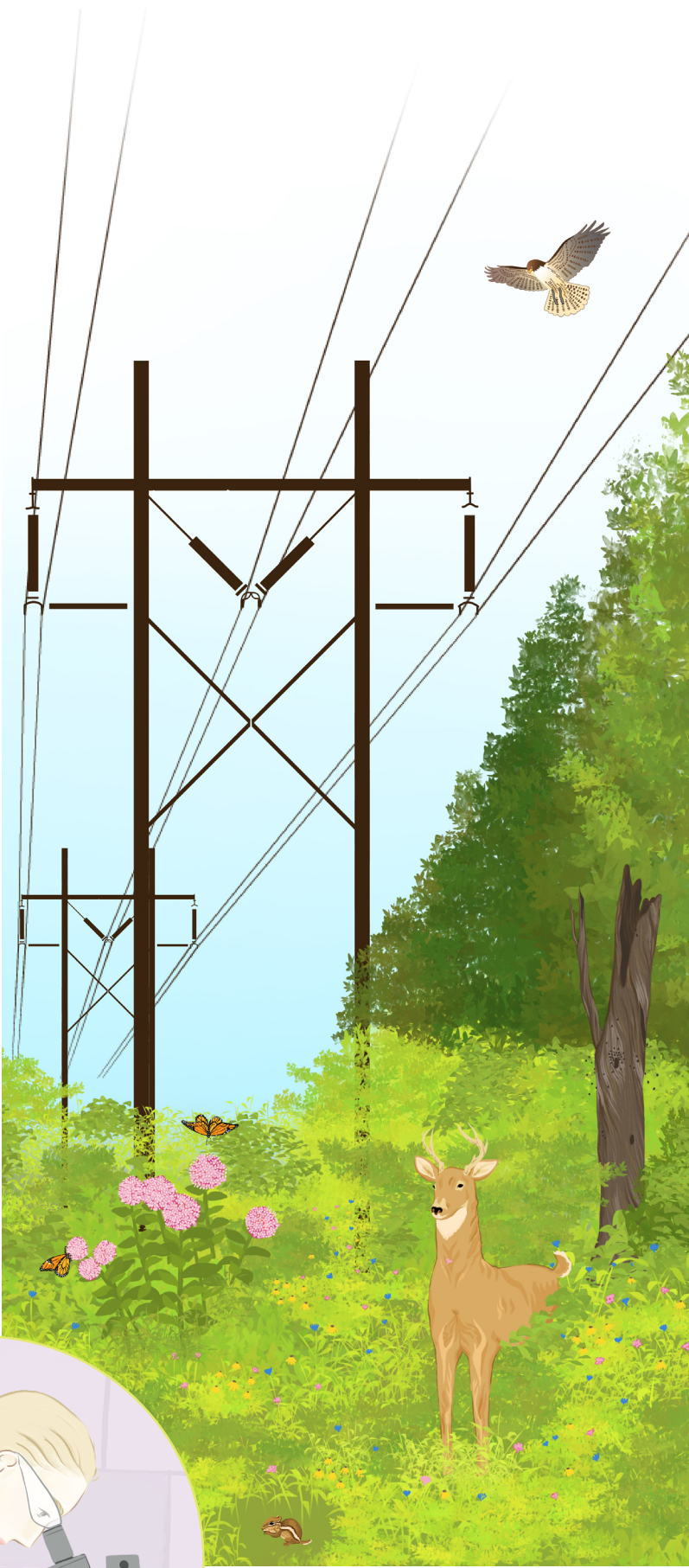
The Biodiversity Study for Integrated Vegetation Management by ACRT Services

What is BIOaudit™?

More than ever, utilities are being called upon to explain their efforts in environmental stewardship. Historically, this has been difficult to quantify, making it harder to justify Integrated Vegetation Management (IVM) efforts and communicate their importance. That's why ACRT Services developed the BIOaudit™ assessment. To promote corridor health and biodiversity over time, and to provide quantifiable data that vegetation management leaders can act upon and communicate with their communities, BIOaudit™ evaluates standardized plots in areas along the Right-of-Way (ROW). BIOaudit™ provides system-based ecological metrics for comprehensive, data-driven planning in managing ROW vegetation. ROW Science Advisors assess multiple aspects of biodiversity in corridors and green spaces—vertebrates, invertebrates, vegetation, and more.

How BIOaudit™ Helps Vegetation Management Leaders

- Evaluates and confirms IVM practices and results
- Enables more proactive vegetation management
- Identifies invasive species impacting ROW ecosystems
- Ensures in-depth analysis via field collection software
- Provides easy access to data via client portals
- Informs the public via a tailored educational website
- Enhances pollinator health and native species in ROWs
- Supports environmental compliance efforts
- Helps share environmental efforts with the public
- Supports rare, threatened, and endangered species
- Improves biomechanical understanding of tree zones
- Aids understanding of biohabitats through cyclical seasonal testing



Identifies key biodiversity areas



Measures ecological progression



Educates and informs local land-owners



Supports threatened species



Bolsters honeybee populations and aids pollination in surrounding areas



BIOaudit™ in Action

ACRT Services recently partnered with National Grid, a major electric and natural gas utility serving more than 20 million people throughout New England and New York. With an extensive commitment to environmental stewardship that reaches back more than 70 years, National Grid enlisted the RSI team at ACRT Services to perform a BIOaudit™ diversity study. Together they explored the impact of current integrated vegetation management (IVM) efforts and increased awareness of IVM in the greater community. Additionally, in the coming years, the data captured by these BIOaudit™ studies will continue to assess native seed banks, beneficial plant and insect communities, and much more. Long-term expectations are an increase in sustainable ground coverage, variety and timing of blooms, and pollinator food, shelter, and protection for insects and other wildlife while decreasing herbicide use and reducing carbon footprint from soil to sky. Connect with us today to learn more about our capabilities and how we'll help you make a positive, lasting impact in your region.

See Continual Results on bioaudit.acrt.com/national-grid

