



TAVIA

2021

C A T A L O G

YOUR RIDE? ALWAYS AN ADVENTURE.

In 2020, TAYA had been the eldest leading bicycle chain brand in Taiwan which got over 50 years. Looking back through the history, many incredible innovations have been developed and become worldwide classics. Appreciate to all the efforts from people around the world who have devoted their time and energy to contribute the TAYA success story. The combination of solid craftsmanship and passion has led us to successfully present full range of amazing products to you, our dear friends! Keep walking, the next step is a new beginning!



TAYA'S SPIRIT

What spirits support and refine TAYA craftsmanship in the past 50 years?

We always dedicate ourselves to searching high quality and superior efficiency through continuous trials and practice. What TAYA pursues are the best solution and the responsibility.

What makes TAYA the leader in the industry?

- **TCPS** - An integrated chain assembly process initiated the world's No.1 in efficient precision manufacturing.
- **GST** - Pioneer Green Anti-Rust chain innovator.
- **DHT** - Exclusive hardening treatment without affecting external dimension.
- And more...

The flexible solution has been always converted into reality through our originality and ingenuity idea creation TAYA people are the most valuable assets who bring up sustainable development in numerous innovations and improvements. The excellent technique is inherited from the previous generation to generation, and will keep creating next glory in the new era.

QUALITY

It is what makes up TAYA's DNA. All our passion, persistence and beliefs are the nutrition to our quality guarantee and fulfill our customers' expectations.

INNOVATION

Identify market trends and back this up with a solid supply chain networks are fundamental to driving TAYA's continual progress.

IMPROVEMENT

With 95% of everything TAYA make produced on-site, TAYA is extremely capable to improve and integrate both R&D and integrate this into mass production.

SERVICE

Quick response, competitive price and fast delivery are obsessions and a delivered promise from TAYA.

CHAINS FOR FUTURE SOLUTIONS

Only focus and enthusiasm can lead us to manage challenges and surpass ourselves. What you need and dream, TAYA has them for you!



PRO TEAM & ATHLETES



TAYA, as a leading brand of bike chain, is involved in collaboration and sponsorship of Pro Team and athletes who really put their passion on cycling all over the world. Since 1993, TAYA has supported over 300 teams and athletes in different regions. It is our honor to be part of the glory record of these riders who keeping in faith.



MEMIL CCN
Pro Cycling Team
Team Champion of 2020 Tour De Taiwan

SWEDEN
11S : ONZE-111



LJUBLJANA GUSTO SANTIC
Continental Cycling Team
Winner of 2019 Trofeo Alcide Degasperì

SLOVENIA
11S : ONZE-111



LUPATO BROTHER
Alex Lupato, four time Italian national champion of Enduro

ITALY
12S : TOLV-121



360 VALTELLINA
3rd at the alpine enduro series Paganella

ITALY
11S : ONZE-111
10S : DECA-101
11S : E-ONZE-111



Miranda Racing Team
Winner of 2019 Portugal Enduro National Championships

FRANCE
11S : E-ONZE-111
12S : TOLV-121



CCN Shining Cycling Team
Winner of 2020 Taiwan Youth Road bike Championship

TAIWAN(R.O.C)
11S : ONZE-111
10S : DECA-101



LUCAS LAGNEAU
Bronze medal BMX European Championships 2018
French national champion DH 2019, youth category

FRANCE
12S : TOLV-121



KTM CX SMP TEAM
First final classification of the Triveneto Trophy

ITALY
11S : ONZE-111 (GST)

INDEX

| | | | |
|---|----|---------------------------------|----|
| DHT-NO.1 HARDNESS TECH | 08 | 11 SPEED / 10 SPEED CHAIN | 24 |
| E-BIKE CHAIN | 10 | 9 SPEED / 8 SPEED CHAIN | 25 |
| GST-100% RUST PROOF | 12 | 8 SPEED / 7-6 SPEED CHAIN | 26 |
| SIGMA ⁺ / SIGMA PRO CONNECTOR..... | 14 | 6-5 SPEED / 1 SPEED CHAIN | 27 |
| EVO-LIGHT CHAIN | 16 | 1 SPEED CHAIN | 28 |
| (ROLLER-LESS CHAIN) | 17 | 1 SPEED BMX CHAIN | 29 |
| 12 SPEED/GALAXY VERSION | 18 | MULTIPLE COLOR SERIES | 30 |
| TECH ICON | 20 | SHIFTING COLOR SERIES | 31 |
| COMPATIBILITY CHARTS | 22 | PACKAGING | 32 |
| | | CHOOSE YOUR CHAIN | 34 |



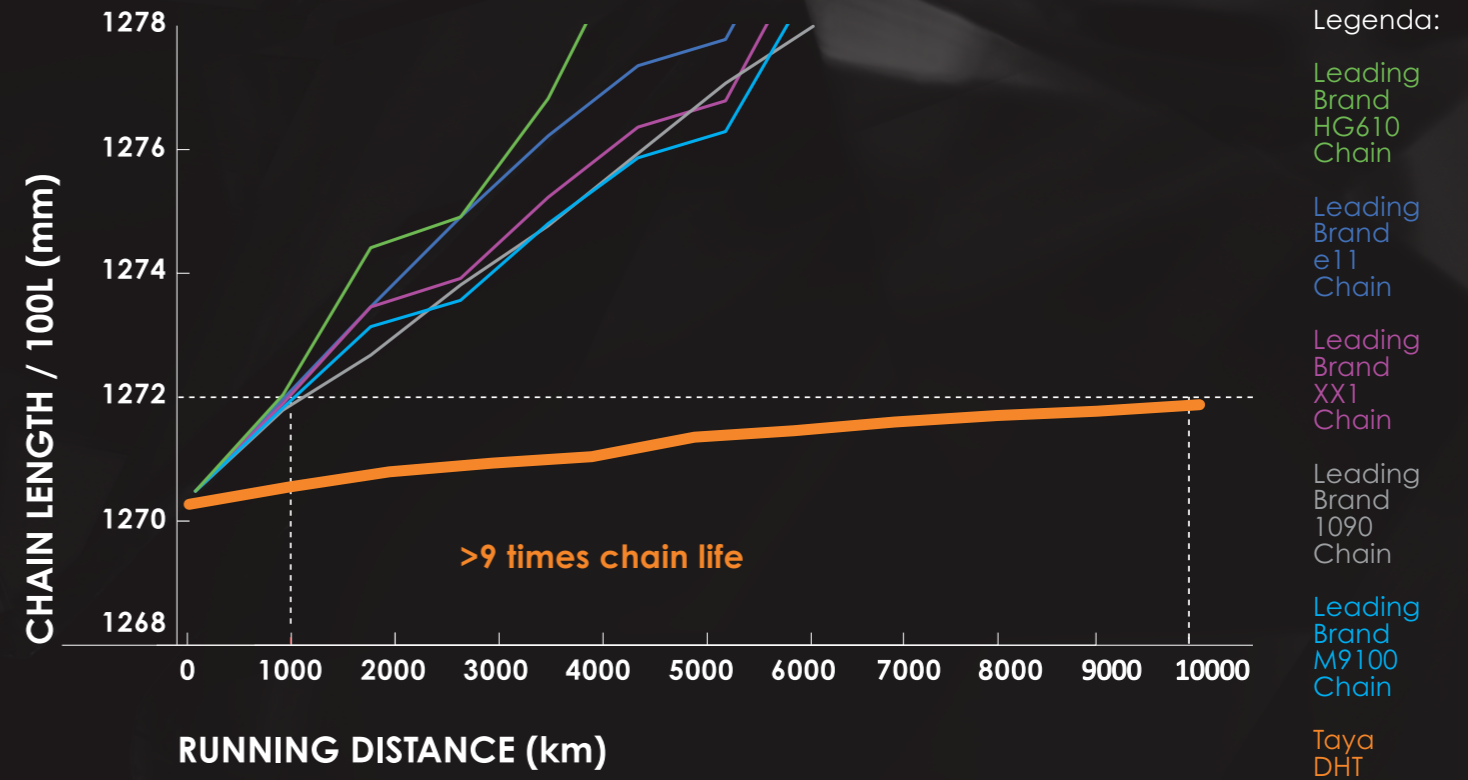


Durable and Great Shifting

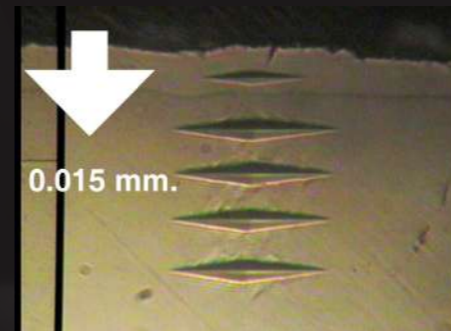
Diamond Hard Tech (DHT) is another revolutionary technology developed by TAYA. DHT provides the solidest hardened base with extreme hardness performance, and self-lubrication features.

UNBELIEVABLE DURABILITY

- 25% Stronger in surface hardness than the market's (over HK1800)
- 3 times thicker hardened layer without increasing external diameter
- 8 times longer chain life (Super Durability)
- Minimize the wear of the group-set

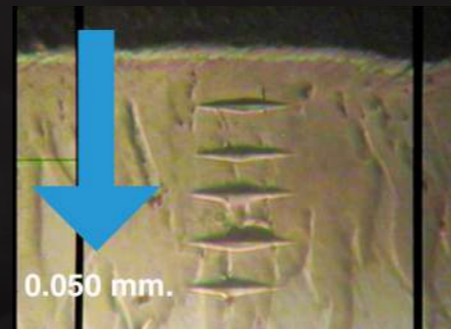


INCREASES AVERAGE CHAIN LIFE TO 10,000 KM



Hard Chrome Electro-plating

At 0.015mm depth, base material fails to resist the cut-through force.



DHT Diffusion Heat Treatment

Sustainable hardness base up to 0.050mm depth when the same cut force applied.

TAYA E-Bike chains are specially designed for sporty pedelecs composed not only of the unique DHT technology against potential pin deforming from high-torque, but also the reinforced 360° riveting power solidly providing the strongest support for sporting endeavor.

They also meet the demands from daily use for commuting / trekking pedelecs particularly as rust-proofing is guaranteed with a TAYA-GST solution. TAYA's E-Bike chain series offer Durable, High-value, lightweight chains helping people ride E-Bikes with safety and confidence.

E-MTB & E-HYBRID BIKE CHAIN

HIGH TORQUE & IMPACT RESISTANCE



Impact obstruction



High-Torque Resistance



Wear Prevention



EASY MAINTAIN DHT self-lubricant

More and more people are now using E-Bikes whether it be for commuting, trekking or even taking bulky items around in an E-Cargo bike particularly in Europe and North America. Having observed the current existing safety standards, TAYA has developed the impact resistance of the E-Bike chains through the range from the 12-speed chain through to the 1GH system. In the field test the chains offered flawless compatibility with Bosch series (350W, 75Nm), and the Yamaha series (500W, 80Nm).

With TAYA-DHT (Diamond Hard Treatment), TAYA bike chain parts will be up to HK 2,000 hardness, which can against the instant high torque output from mid-drive drivetrain. Thus, TAYA E-bike chains have been approved on 1000W and 160Nm torque mid-drive system, and highly recommended for sporty pedelecs.

12 SPEED CHAIN




e TOLV - 121

Sigma* connector included

GST-500 SILVER/SILVER

- DHT TREATMENT
- INNER CHAMFERED PLATE
- OUTER CHAMFERED OUTER PLATES
- SUPER LENGTH INNER CHAMFER
- SUB PUNCHED PIN
- DEVELOPED FOR E-BIKE

9 SPEED CHAIN



e NOVE - 91

Sigma* connector included

GST-500 SILVER/SILVER

- DHT TREATMENT
- INNER CHAMFERED PLATE
- OUTER CHAMFERED OUTER PLATES
- SUB PUNCHED PIN
- INCLINED BRIDGE
- DEVELOPED FOR E-BIKE

11 SPEED CHAIN




e ONZE - 111

Sigma* connector included

GST-500 SILVER/SILVER

- DHT TREATMENT
- INNER CHAMFERED PLATE
- OUTER CHAMFERED OUTER PLATES
- SUPER LENGTH INNER CHAMFER
- SUB PUNCHED PIN
- DEVELOPED FOR E-BIKE

8 SPEED CHAIN



e OCTO - DH

Sigma* or Sigma Pro connector included

GST-500 SILVER/SILVER

- DHT TREATMENT
- INNER CHAMFERED PLATE
- INCLINED BRIDGE
- SUPER LENGTH INNER CHAMFER
- SUB PUNCHED PIN
- DEVELOPED FOR E-BIKE

10 SPEED CHAIN



e DECA - 101

Sigma* connector included

GST-500 SILVER/SILVER

- DHT TREATMENT
- INNER CHAMFERED PLATE
- OUTER CHAMFERED OUTER PLATES
- SUPER LENGTH INNER CHAMFER
- SUB PUNCHED PIN
- DEVELOPED FOR E-BIKE

1 SPEED CHAIN



e TB-910 DH

Sigma Pro connector included

GST-500 SILVER/SILVER

- DHT TREATMENT
- HIGH TENSION STRENGTH
- INNER CHAMFERED PLATE
- OUTER CHAMFERED OUTER PLATES
- ENLARGED OUTER PLATES
- SUB PUNCHED PIN
- DEVELOPED FOR E-BIKE



Anti-Rust & Eco-Friendly.

Ride in extreme conditions with GST chains.

Rust Prevention is essential! Water, high humidity, mist and salt are factors of impacting chain performance.



SCRATCH RESISTANT



EASY MAINTENANCE



100% RUST-PROOF FROM PIN TO PLATES



ECO-FRIENDLY PLATING, NON-TOXIC COATING

• **COMPREHENSIVE CORROSION PROTECTIONS.** Our anti rust performance is twice as good as stainless steel.

• Unlike zinc-flake coated anti-rust treatment, GST is a special in-house electric plating which leaves 1/3 of the thickness.

• GST anti-rust chain components make the cleaning easier by rinsing off dirt or mud.



• TAYA-GST has passed over 1,000 hours of Salt Spray Test with results showing up to 25 years of rust resistance!

• 100% free of hexavalent chrome compounds and complies with RoHS, REACH, and CPSIA standards.


• TAYA's exclusive surface treatment is available on bicycle fasteners.



SIGMA+

A convenient joint-link with time-saving!



-  **REUSABLE** up to 3 times
-  **QUICK** insert and pull
-  **EASY MAINTAIN** DHT self-lubricant

TAYA'S FLAGSHIP OF CONNECTORS

The Sigma+ is TAYA's flagship of connectors. It is the result of decades of continuous development since the 1990s. It is easy to use and is a great tool for all cyclists. The Sigma+ greatly simplifies the tasks associated with quick and reliable bicycle chain mounting. And it is reusable.



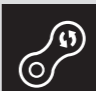
SPECIFICATIONS

- Available for 8 - 12 speed chains
- Unique stopping latch design prevents the link coming loose
- Quiet shifting experience from smooth plate design
- DHT pin equipped to be self-lubricating, and as durable as other DHT chain link
- Compatible for all brands of chain in the market

SIGMA PRO

The safest way to connect a broken chain quickly!



-  **SAFE**
-  **TOOL-FREE** unlocking (Free-Type Sigma Pro)
-  **MAGIC SWITCH** TAYA's exclusive way to replace an old chain on a bike

28-YEAR UNI-TECH

Sigma Pro Connector's makes chain assembly fast all without a chain removal tool. Sigma Pro's pinhead groove interlocks with the top plate, providing great strength in the rivet, making Sigma Pro Connector as strong as any links in the chain, without compromising shifting quality. There are millions of Sigma Pro connectors in use every day around the world and it has been that way for the last 28 years which is a great testament to their reliability.

SPECIFICATIONS

- Available for 1-speed up to 8-speed chains
- Riveting strength min. over 250kgf
- Quiet shifting performance from the smooth plate design
- DHT pin equipped to be self-lubricating, and as durable as other DHT chain links
- Compatible with all chain brands in the market



1.Non-Inverse lip:

Backstop fortification after locked-in

2.Smart incline:

Help groove on pin to slip in smoothly Enlarge contact surface to secure stability

3.Deep inner waist chamfer:

TAYA exclusive technique by chamfer in perfect length and punctual angle to secure fluent riding without annoying friction

4.Pioneer T-Pin:

Broandened flat head fully covers pin hole & supports enhanced riveting strength against side



force

5.Easy pull outward:

Just pull less than a second!



6.Optimum Interval:

Precisely engineered distance to ensure silky and stable sit per riding even in bumps



7.TAYA DHT pin:

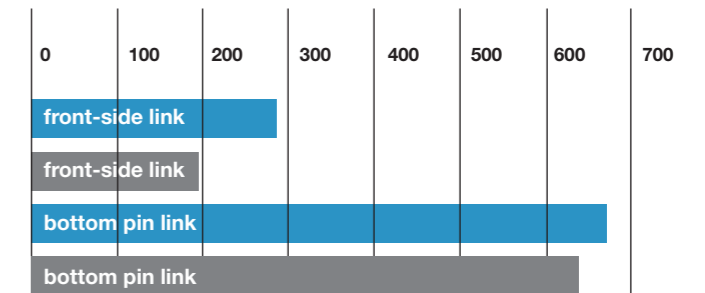
TAYA exclusive DHT tech creates unbelievable durability and great shifting strongest and constant hardness for entire parts to guarantees anti-elongation

TECH

Thanks to the T-pin structure, the riveting power is 15% higher than other brands.

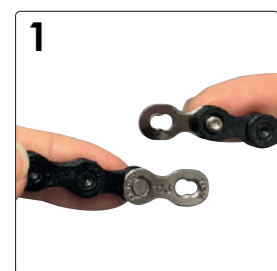


RIVETING POWER (kgf)

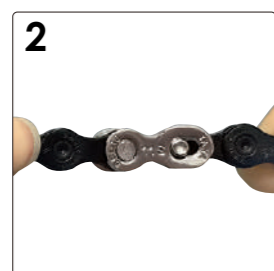


● Taya Quick-Link ● Other

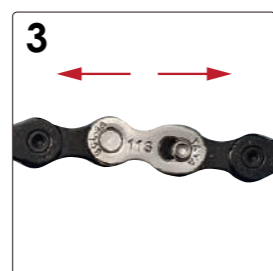
LOCKING



1 Insert both halves of Sigma+ Connector into both ends of chain

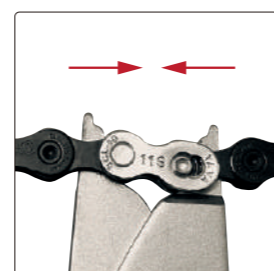


2 Buckle both halves of Sigma+ Connector together



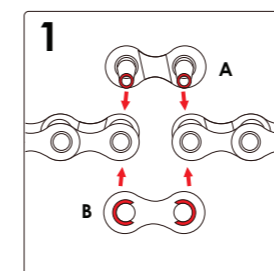
3 Pull the chain with the tool

UNLOCKING

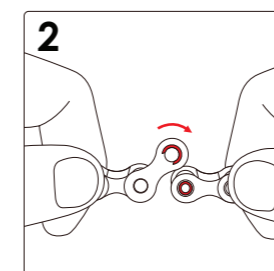


4 Remove Sigma+ Connector by tool

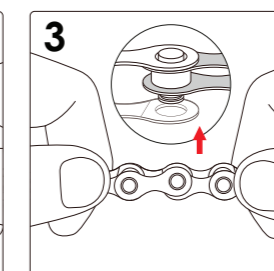
LOCKING



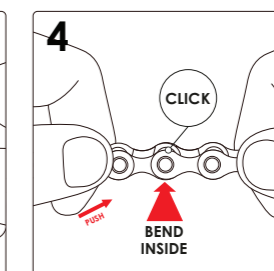
1 A. Sigma Pro link
B. Sigma Pro top plate



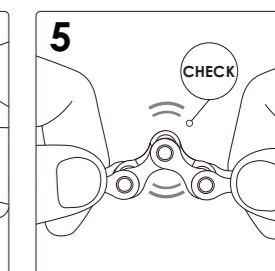
2 Push and hold Sigma Pro top plate, pass open Sigma Pro link through the end of the chain



3 Place the Sigma top plate over the top of the free rivet groove while gently bending the Sigma link



4 Press down Sigma top plate until you hear a "click", the chain is correctly assembled



5 Check all of the chain to ensure no stiff links

UNLOCKING

Open a chain by bending it hardly with the top plate of Sigma Pro connector toward yourselves until the top plate jumps out. For safety, one-time use for Sigma Pro connector.



- 3D assembling video
- Exchange video

EVO-LIGHT CHAIN

THE CLASSIC

THE 20TH CENTURY UPGRADE

THERE IS A NEW DEFINITION OF A BICYCLE CHAIN!



376g

265g

222g

19th century, 1871 Bush Chain

1989 Bushless Chain

Since the 2013 EVO Chain, there is a new standard Rollerless Structure.



ROLLER-LESS



QUIET PERFORMANCE WITH NO ROLLER INSIDE



GREASE CONTAIN FOR LUBRICATION

THREE COMPONENTS

There are many obvious good reasons for cycling products being lightweight.

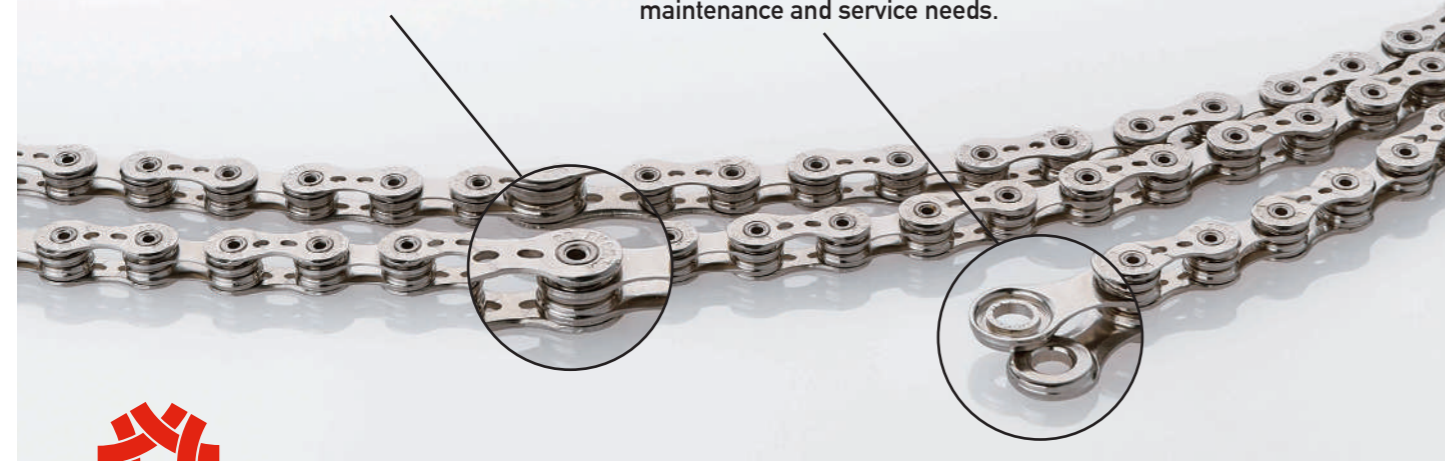
TAYA's Three Component technology, by designing plates and protruding roller in one piece, achieves significant power transmission by limiting the components of the chain links to only three.

360° ALL-DIRECTION RIVETING STRENGTH

Provides strong pin strength, firmly attached to the outer plate. Overall secures the riveting structure without any risk of breaking.

U-SHAPED GREASE CONTAINER

The grease keeping place renders continuous lubrication support and provides the best chain running performance. Surely reduce frequent maintenance and service needs.



TAIWAN EXCELLENCE

THE WINNING AWARD OF ROLLERLESS STRUCTURE

- 15% LIGHTER
- 40% MORE EFFICIENT THAN TRADITIONAL CHAINS.

1. ENERGY SAVING

Direct and solid contact to avoid 5~8% energy loss in transmission. The co-shaped structure helps pedaling forces go into projecting the bike forward.

2. MINIMIZE USE OF MATERIALS

About 15% reduction in chain weight is achieved.

3. QUIET PERFORMANCE

Precision made pin ensures chains stay on chain rings and chain wheels. The chain is enhanced to fluently and silently roll through the drivetrain system.

4. LOW WEAR OF THE CHAIN RING

According to the new shape of roller which can enhance to much fluently through the drivetrain system. It significantly slows down the wear, extending the life of the wheel.

ROLLER-LESS CHAIN



DHT TREATMENT



EVO-LIGHTS SERIES



HIGH TENSION STRENGTH



SILENT DESIGN



SELF LUBRICATION



ROLLER-LESS



OUTER CHAMFERED OUTER PLATES



INNER CHAMFERED PLATE



SUPER LENGTH INNER CHAMFER



SUB PUNCHED PIN



GALAXY SERIES

SHIFTING THE EXTRA INTO SPEED

EL-ONZE-117 is an innovative prototype in the modern bicycle chain industry. With its rollerless structure, TAYA's new 11-speed chain offers groundbreaking shifting precision at a lighter weight. Furthermore, grease storages within the O-shape container prolong the chain's period of self-lubrication, which significantly slows down the wear, extending the life of chain.

EVO LIGHT
11
SPEED
CHAIN

EL-ONZE-117

Sigma+ Connector Included

Weight: 205g /100L

GALAXY GREEN



GALAXY PURPLE RED



GALAXY BLUE



TI-GOLD



TI-BLACK



SILVER/SILVER



NEW GALAXY 2020

GREEN / PURPLE RED VERSION

FUNCTIONAL AND AESTHETIC

The galaxy series refreshes the bike chain typical image that reigned supreme for a long time. In between the few milliseconds' precise control, TAYA captured the milky way of color into your bicycle with the all-new aurora green, purple red, and blue finish.

- Superior scratch resistance
- Outstanding Long-lasting color
- Multi-color option to fit your own taste
- Available on 10 to 12 speed chains

High-efficiency built to last. Developed through finite element analysis and rigorous real-world testing for engineered strength, TAYA's 12 speed chain is packed with smart features that keep the chain running and shifting smoothly in the harshest riding conditions.



DHT TREATMENT



SUPER LENGTH INNER CHAMFER



INNER CHAMFERED PLATE



SUB PUNCHED PIN



OUTER CHAMFERED OUTER PLATES



GALAXY SERIES

12 SPEED CHAIN

TOLV - 121

Sigma+ Connector Included

Weight: 223g /100L



TI-BLACK/GOLD

GALAXY BLUE

TI-GOLD

TI-BLACK

GST-500

SILVER/SILVER

GREEN

PURPLE RED



MATERIALS



TEFLON COATING:

Teflon coated with joyful colors & self-lubrication feature.



COLORFUL CHAIN:

Plates coated with diversify colors.



GALAXY SERIES:

Mirroring and colorful surface with easy rinse feature.



DHT TREATMENT:

TAYA exclusive tech with self-lubricant and extreme durability.



GST TREATMENT:

TAYA exclusive green treatment to achieve outstanding rust-proof performance.

FUNCTION



DEVELOPED FOR E-BIKE

Best choice for motor-assistant bicycles.



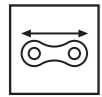
EVO-LIGHT SERIES

Perfect balance between extreme weight saving & safety.



LIGHT WEIGHT DESIGN

Achieve remarkable weight-reduction by 100% hollow parts.



HIGH TENSION STRENGTH

Meet the demand from extreme riders .



MUD AND WATER SHED OFF

Holes on plates which can shed off dirty easily.



SILENT DESIGN



SELF-LUBRICATION

CONSTRUCTION



ENLARGED OUTER PLATE

Utmost outer plates support chain sitting in position on bumping road.



OUTER CHAMFERED OUTER PLATES

Great slick & quiet shifting performance.



INNER CHAMFERED PLATE

Essential smooth shifting design.



SUPER LENGTH INNER CHAMFER

Ideal smooth shifting property designed along with chain moving line.



INCLINED BRIDGE

Unique design for utmost early cog climbing.



STRAIGHT BRIDGE

Helps chain climbing up bigger cogs in transmission.



SUB PUNCHED PIN

360° riveting provides fully strength.



HOLLOW PIN

Eye-catching and weight reduction design.



HALF-LINK

Meet flexible demands in odd/even links.



ASYMMETRIC SHAPE IN WAIST

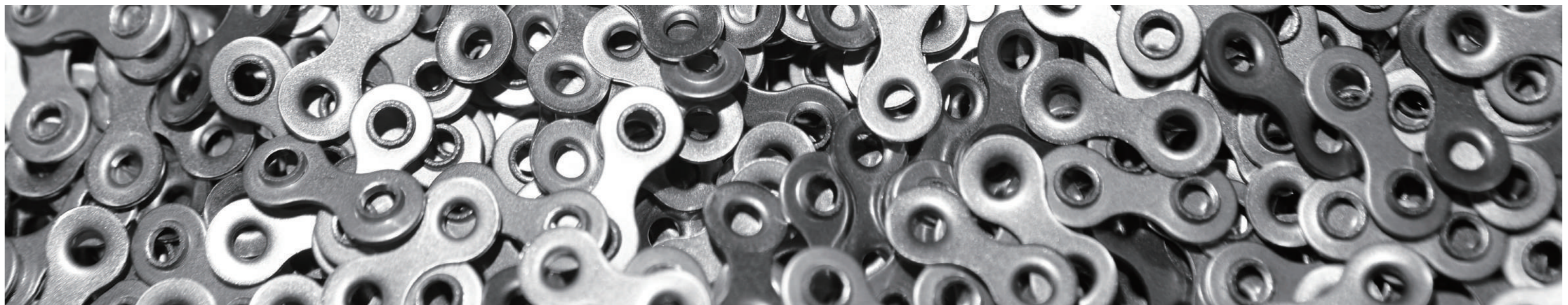
Curved side platedesign to completely stay on chainring.



ROLLER-LESS



DEEP DISH CHAMFERED & BULGED OUTER PLATES



E-BIKE PEDELECS (MID-MOTOR DRIVE)

| MODEL | e TOLV-121 | e ONZE-111 | e DECA-101 | e NOVE-91 | e OCTO-DH | eTB-910 DH |
|------------------|-------------|-------------|-------------|-------------|-------------|-------------|
| FINISH | GST-TG, S/S | GST-TG, S/S | GST-TG, S/S | GST-TG, S/S | GST-TG, S/S | GST-TG, S/S |
| 12-SPEED | ● | | | | | |
| 11-SPEED | | ● | | | | |
| 10-SPEED | | ● | ● | | | |
| 9-SPEED | | | | ● | | |
| 8-SPEED | | | | | ● | |
| IGH - 3/32" GEAR | | | | | ● | |
| IGH - 1/8" GEAR | | | | | | ● |

12 SPEED

| MODEL | TOLV-121 |
|--|--|
| FINISH | Galaxy series, Ti-B/G, Ti-B, Ti-G, GST-TG, S/S |
| COMPARE WITH | EAGLE®-XX1 / X01 / GX / NX / SX, RED® / FORCE®, M9100 / M8100 / M7100, Campy 12S chain |
| EAGLE® series (XX1 / X01 / GX / NX / SX) | ● |
| RED eTAP® | ● |
| RED® | ● |
| XTR® | ● |
| DEORE XT* | ● |
| SLX* | ● |
| SUPER RECORD™ | ● |
| RECORD™ | ● |
| Chorus™ | ● |

11 SPEED

| MODEL | EL-ONZE 117 | ONZE-111 (UL) | ONZE-111 |
|---------------------|--------------------------------|---|---|
| FINISH | Galaxy series, Ti-B, Ti-G, S/S | Ti-B, Ti-G, GST-TG, S/S, UPBEAT series | Galaxy series, Ti-B/G, Ti-B, Ti-G, GST-TG, S/S, S/B, UPBEAT / TRAVELER series |
| COMPARE WITH | HG-701 / 601 / 6800 / PC-1110 | HG-901 / 9000, RED22 / PC-1170 / 1130®, Campy 11S chain | HG-701 / 601 / 6800, PC-1110 |
| DURA-ACE* | ● | ● | ● |
| DURA-ACE R9150* | ● | ● | ● |
| ULTEGRA* | ● | ● | ● |
| ULTEGRA R8050* | ● | ● | ● |
| 105* | ● | ● | ● |
| XTR M9050* | | | ● |
| DEORE XT M8050* | | | ● |
| GRX RX810® | | | ● |
| GRX RX600® | | | ● |
| METREA® | | | ● |
| SRAM Force® series | ● | ● | |
| SRAM Rival® series | | | ● |
| POTENZA™ / CENTAUR™ | ● | ● | |

10 SPEED

| MODEL | DECA-101 (UL) | DECA-101 |
|--------------|---|---|
| FINISH | Ti-B, Ti-G, GST-TG, S/S, UPBEAT series | Galaxy series, Ti-B/G, Ti-B, Ti-G, GST-TG, S/S, S/B, UPBEAT / TRAVELER series |
| COMPARE WITH | 7901 / 6701 / 5701 / 4601 / PC-1091R / 1071 | 7801 / 6600 / 5600 / 4601 / HG94 / HG74 / M981 / PC-1051 / 1031 |
| TIAGRA® | ● | ● |
| APEX® series | ● | ● |
| SAINT® | | ● |
| ZEE* | | ● |
| DEORE XT* | | ● |
| DEORE* | | ● |
| GRX RX400® | | ● |

9 SPEED

| MODEL | NOVE-91 (UL) | NOVE-91 | TB-90 |
|--------------|----------------------------------|---|---|
| FINISH | Ti-G, GST-TG, S/S, UPBEAT series | Ti-G, GST-TG, S/S, S/B, UPBEAT series | GST-TG, S/S, S/B, B/B |
| COMPARE WITH | PC-991 HP | 7701 / HG93 / 73 / 53, PC-991 / 971 / 951 | 7701 / HG93 / 73 / 53, PC-991 / 971 / 951 |
| SORA® | ● | ● | ● |
| ALIVIO® | | ● | ● |
| ACERA* | | ● | ● |
| ALTUS* | | ● | ● |
| ALFINE* | | ● | ● |

8/7 SPEED

| MODEL | OCTO-DH | OCTO | TB-600 | TB-65 |
|--------------|-------------|---|-----------------------|---------------|
| FINISH | GST-TG, S/S | GST-TG, S/S, S/B, B/B | GST-TG, S/S, S/B, B/B | S/S, S/B, B/B |
| COMPARE WITH | | HG91 / 71 / 50 / PC-890 / 870 / 850 / 830 | | |
| ACERA ALTUS* | | ● | ● | ● |
| ALTUS* | | ● | ● | ● |
| CLARIS* | | ● | ● | ● |
| TOURNEY TX* | | | | ● |

7/6/5 SPEED

| MODEL | TB-50 | TB-15 (DIRECTIONAL) | TB-408 | EL-408 |
|-----------------|------------------|---------------------|-------------------------|----------|
| FINISH | GST-TG, S/B, B/B | S/S, B/B | G/G, G/B, S/S, S/B, B/B | S/S, B/B |
| COMPARE WITH | HG-40 / UG51 | HG-40 / UG51 | PC10 | |
| TOURNEY® series | ● | ● | ● | ● |
| INDEX | ● | ● | ● | ● |
| NON-INDEX | | | ● | ● |

SINGLE SPEED (includes INTERNAL-GEAR HUB, FIXED GEAR & BMX)

| MODEL | SUPER SINGLE-a | TB-980 | 408H | TB-910 | 410H | 410B | EL-410 |
|-----------------------------------|---------------------------|----------|--------------------------------|----------|--------------------------------|----------|----------|
| FINISH | GST-TG, S/S, LOHOS series | S/S, S/B | GST-TG, S/S, B/B, LOHOS series | S/S, S/B | GST-TG, S/S, B/B, LOHOS series | S/S, B/B | S/S, B/B |
| COMPARE WITH | | | | | NX10 | PC-1 | |
| EXERCISE BIKE 3/32" GEAR | ● | ● | ● | | | | |
| EXERCISE BIKE 1/8" GEAR | | | | ● | ● | ● | ● |
| BMX/FIXED GEAR 3/32" GEAR | ● | ● | ● | | | | |
| BMX/FIXED GEAR/ COASTER 1/8" GEAR | | | | ● | ● | ● | ● |
| IGH - 3/32" GEAR | ● | | ● | | | | |
| IGH - 1/8" GEAR | | | | | ● | ● | ● |
| CITY/CHILD BIKE W/1/8" GEAR | | | | | | ● | ● |

Finish:

G = Gold

S = Silver

B = Black

GST-TG = Eco-Friendly Anti-Rust Treatment [GST500(TG)]

* Registered Trademark of Shimano Inc.

™ Registered Trademark of Campagnolo Srl.

® Registered Trademark of SRAM LLC.

ONZE-111 (UL) is the ideal lightweight model for road bike racer. With every precise cutting, all the reduction grams transferred into speed on your racing field. DHT technology applied also assures strength and durability while cycling.

11 SPEED CHAIN

ONZE - 111 (UL)

Sigma+ Connector Included

Weight: 205g /100L

TI-GOLD TI-BLACK GST-500 SILVER/SILVER UPBEAT

- DHT TREATMENT
- MUD AND WATER SHED OFF
- INNER CHAMFERED PLATE
- OUTER CHAMFERED OUTER PLATES
- LIGHT WEIGHT DESIGN
- HOLLOW PINS
- SUPER LENGTH INNER CHAMFER

Sharing all the key features with our high-end lightweight series, NOVE-91(UL) also puts an "Inclined bridge" on its outer plates for enhancing and accurate shifting.

9 SPEED CHAIN

NOVE - 91 (UL)

Sigma+ Connector Included

Weight: 230g /100L

TI-GOLD GST-500 SILVER/SILVER UPBEAT

- DHT TREATMENT
- MUD AND WATER SHED OFF
- INNER CHAMFERED PLATE
- OUTER CHAMFERED OUTER PLATES
- LIGHT WEIGHT DESIGN
- HOLLOW PINS
- SUPER LENGTH INNER CHAMFER
- INCLINED BRIDGE

11 SPEED CHAIN

ONZE - 111

Sigma+ Connector Included

TAIWAN EXCELLENCE 2017

TI-BLACK/GOLD GREEN PURPLE RED GALAXY TI-GOLD TI-BLACK GST-500 SILVER/SILVER SILVER/BLACK UPBEAT

- DHT TREATMENT
- INNER CHAMFERED PLATE
- OUTER CHAMFERED OUTER PLATES
- SUB PUNCHED PIN
- SUPER LENGTH INNER CHAMFER
- GALAXY SERIES

9 SPEED CHAIN

NOVE - 91

Sigma+ Connector Included

TI-GOLD GST-500 SILVER/SILVER SILVER/BLACK UPBEAT

- DHT TREATMENT
- INNER CHAMFERED PLATE
- OUTER CHAMFERED OUTER PLATES
- SUB PUNCHED PIN
- INCLINED BRIDGE

DECA-101 (UL) is a 10-speed chain with max hollow parts, with the strengthen design, this model ensures every link has superior strength and delivers the safety to perform at your best whether you're racing on.

10 SPEED CHAIN

DECA - 101 (UL)

Sigma+ Connector Included

Weight: 225g /100L

TI-GOLD TI-BLACK GST-500 SILVER/SILVER UPBEAT

- DHT TREATMENT
- MUD AND WATER SHED OFF
- INNER CHAMFERED PLATE
- OUTER CHAMFERED OUTER PLATES
- LIGHT WEIGHT DESIGN
- HOLLOW PINS
- SUPER LENGTH INNER CHAMFER

Crafted bulged bridge with a new dish-chamfered outer plate, the TB-90 provides great shifting performance with little noise. The chain uses the same strong riveting power as with other high-end models. It is an excellent choice for 9-speed standard bikes.

9 SPEED CHAIN

TB - 90

Sigma+ Connector Included

GST-500 SILVER/SILVER SILVER/BLACK BLACK-BLACK

- SUB PUNCHED PIN
- SUPER LENGTH INNER CHAMFER
- DEEP DISH CHAMFERED & BULGED OUTER PLATES

10 SPEED CHAIN

DECA - 101

Sigma+ Connector Included

TI-BLACK/GOLD GREEN PURPLE RED GALAXY TI-GOLD TI-BLACK GST-500 SILVER/SILVER SILVER/BLACK UPBEAT

- DHT TREATMENT
- INNER CHAMFERED PLATE
- OUTER CHAMFERED OUTER PLATES
- SUB PUNCHED PIN
- SUPER LENGTH INNER CHAMFER
- GALAXY SERIES

Eye-catching design and sharing most of the key features found in our top end range, OCTO is recommended for 8 speed bikes and it's a great choice for MTB / off road bikes. The OCTO is a pioneer in the world of 8 speed chains.

8 SPEED CHAIN

OCTO

Compatibility: 8-Speed, 1/2" x 3/32"

Sigma+ or Sigma Pro Connector Included

GST-500 SILVER/SILVER SILVER/BLACK

- INCLINED BRIDGE
- INNER CHAMFERED PLATE
- SUPER LENGTH INNER CHAMFER
- SUB PUNCHED PIN

8 SPEED CHAIN

TB-600

Compatibility: 8-Speed, 1/2" x 3/32"

Sigma+ or Sigma Pro Connector Included

GST-500 SILVER/SILVER SILVER/BLACK BLACK-BLACK

The TB-65 is for road and off-road bicycles; it is assembled with our eye-catching and unique EP Pin (Elliptical Push Pin). The design of the EP pin allows users to safely connect and disconnect the chain using a standard riveting tool. For OEM only.

8 SPEED CHAIN

TB-65

Compatibility: 8-Speed, 1/2" x 3/32"

GST-500 BLACK-BLACK

TB-50 chain has bridged outer plates to let the chain run smoothly and enhance quick gear changes.

7/6 SPEED CHAIN

TB-50

Compatibility: 7/6-Speed, 1/2" x 3/32"

Sigma Pro Connector Included

Duel-index system

GST-500 SILVER/BLACK BLACK-BLACK

Our most economic chain TB-15 is for use on Shimano Tourney and rear-indexed systems. One side of the outer plates is bulged while the other is flat. For OEM only.

7/6 SPEED CHAIN

TB-15

Compatibility: 7/6-Speed, 1/2" x 3/32"

Sigma Pro Connector Included

Rear-index system

SILVER/BLACK BLACK-BLACK

- SUB PUNCHED PIN
- SUPER LENGTH INNER CHAMFER
- INNER CHAMFERED PLATE
- STRAIGHT BRIDGE

- SUB PUNCHED PIN
- SUPER LENGTH INNER CHAMFER
- INNER CHAMFERED PLATE
- STRAIGHT BRIDGE

- STRAIGHT BRIDGE ONE SIDE
- INNER CHAMFERED PLATE
- SUPER LENGTH INNER CHAMFER

- STRAIGHT BRIDGE ONE SIDE
- INNER CHAMFERED PLATE
- SUPER LENGTH INNER CHAMFER

6/5 SPEED CHAIN

TB-408

Compatibility: 6/5-Speed, 1/2" x 3/32"

Non-index system

Out of product range since MY21

GOLD-GOLD GOLD/BLACK SILVER/SILVER SILVER/BLACK BLACK-BLACK

- SUPER LENGTH INNER CHAMFER

6/5 SPEED CHAIN

EL-408

Compatibility: 6/5-Speed, 1/2" x 3/32"

Non-index system

Sigma Pro Connector included

SILVER/SILVER BLACK-BLACK

- EVO-LIGHT SERIES 15% WEIGHT SAVING

1 SPEED: INTERNAL GEAR HUB

This special Half-link chain is recommended for electric bikes and cycles fitted with internal gear hub. The plates have an asymmetrical design to put the chain closer to the gear sprocket. It is not only uniquely attractive but light weight and the short plate design means it is much easier to find the correct transmission length compared to standard chains.

1 SPEED CHAIN

SUPER SINGLE-α

Compatibility: 1-Speed, 1/2" x 3/32"

Sigma Pro Connector Included

Additional Sigma Connector Included

GST-500 SILVER/SILVER COLOR OPTIONS

TAIWAN EXCELLENCE AWARD 2010

FESTIVAL OF INNOVATION 2016

- LIGHT WEIGHT DESIGN
- HOLLOW PINS
- HALF-LINK
- ASYMMETRIC SHAPE IN WAIST
- COLOR OPTIONS (see page 32)

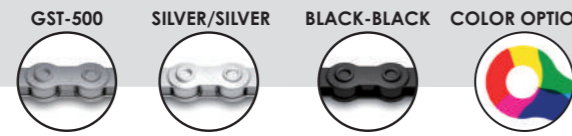
1 SPEED CHAIN



408H

Compatibility: 1-Speed, 1/2" x 3/32"

GST-500 SILVER/SILVER BLACK-BLACK COLOR OPTIONS



- HIGH TENSION STRENGTH OVER 1,020 kgf
- COLOR OPTIONS (see page 32)

1 SPEED CHAIN



410H

Compatibility: 1-Speed, 1/2" x 1/8"

GST-500 SILVER/SILVER BLACK-BLACK COLOR OPTIONS



- HIGH TENSION STRENGTH OVER 1,020 kgf
- COLOR OPTIONS (see page 32)

1 SPEED CHAIN



410B

Compatibility: 1-Speed, 1/2" x 1/8"

GOLD-GOLD SILVER/SILVER SILVER/BLACK BLACK-BLACK COLOR OPTIONS



- COLOR OPTIONS (see page 32)

1 SPEED CHAIN



EL-410

Compatibility: 1-Speed, 1/2" x 1/8"

Sigma Pro or Spring Clip Connector included


GOLD-GOLD SILVER/SILVER BLACK-BLACK COLOR OPTIONS



- EVO-LIGHT SERIES 15% WEIGHT SAVING
- COLOR OPTIONS (see page 32)

SPRING CLIP CONNECTOR

1 SPEED CONNECTOR



Color: Silver/Black


1/2" x 1/8"

- DHT TREATMENT
- INNER CHAMFERED PLATE
- OUTER CHAMFERED OUTER PLATES
- SUB PUNCHED PIN
- SUPER LENGTH INNER CHAMFER
- DEVELOPED FOR E-BIKE

1 SPEED BMX, FIXIE AND EXERCISE BIKE

TAYA ensures maximum quality control in production hence upgrade the performance in anti-wear. As a result, we significantly extend the chain life for riding in the most challenging conditions.

1 SPEED CHAIN

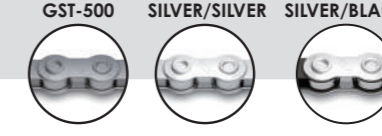


TB-910

Compatibility: 1-Speed, 1/2" x 1/8"

Sigma Pro Connector Included

GST-500 SILVER/SILVER SILVER/BLACK



- HIGH TENSION STRENGTH OVER 1,020 kgf
- SUB PUNCHED PIN
- INNER CHAMFERED PLATE
- OUTER CHAMFERED OUTER PLATES
- ENLARGED OUTER PLATES

Shares almost the same features with TB-910, specified for 1/2" x 3/32" gear use.

1 SPEED CHAIN

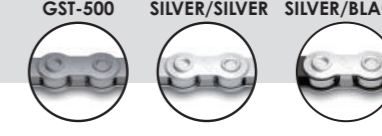


TB-980

Compatibility: 1-Speed, 1/2" x 3/32"

Sigma Pro Connector Included

GST-500 SILVER/SILVER SILVER/BLACK



- HIGH TENSION STRENGTH OVER 1,020 kgf
- SUB PUNCHED PIN
- INNER CHAMFERED PLATE
- OUTER CHAMFERED OUTER PLATES
- ENLARGED OUTER PLATES

MULTIPLE COLOR SERIES

JOYFUL SERIES MORE THAN 2 TONES IN 1 CHAIN



TAYA's patent Sigma quick link OEM type offers the benefit of being able to supply 100% full colour on all links and you won't find any non-coloured links or scratching marks on the chain connecting pin. Additionally, the easily assembled Sigma quick link can give colourful chains even more eye-catching features. You can make your chain as unique as you wish, just choose TAYA colourful chains. Masters in the technique of surface treatment, TAYA presents 3 different kinds of colourful chain series, which are ROHS and CPSIA approved, and enriches the eye-catching point. Also multiple colours can be chosen, and customised colours can also be provided.

LAHOS SERIES

TEFLON COATED

Features:

- Anti-Corrosion features
- Self-lubricating, only minimum lubrication needed
- Teflon coated material with 100% RoHS / REACH compliant
- Recommended for bike with internal gear hub, fixie bike, BMX

Recommended for TAYA models:
410H / 408H / TB-910 / TB-980 / Super Single-α

Sigma connector included



PAINT COATED

Recommended for TAYA models:
410B, EL-410

Sigma connector included



SHIFTING COLORS SERIES

EVERY JOURNEY HAS A COLORFUL MEMORY!

TRAVELER SERIES

Every journey has a colorful memory. The low-friction, high durability colour treatment on the inner plate retains its long lasting finish, keeping the journey for person and machine as colourful as possible.



Features:

- Nickel-plated outer and inner plates
- Inner plates optionally colored blue, green, red or yellow

Sigma connector included



UPBEAT SERIES

Silver/Color Derailleur Chain gives you the perfect opportunity to show your true colors!



MY21 NEW ARRIVAL PKG



TAYA PRIMO



30 METER SMALL ROLL SERIES



SIGMA+ CONNECTOR CARD



PANEL BOX SERIES 10 pcs



TOLY-121
FINISH:
Ti-Black
GST-500
Silver/Silver



ONZE-111(UL)
FINISH:
Ti-Black
GST-500
Silver/Silver
Upbeat Series



DECA-101(UL)
FINISH:
Ti-Black
GST-500
Silver/Silver
Upbeat Series



NOVE-91(UL)
FINISH:
Ti-Gold
GST-500
Silver/Silver
Upbeat Series

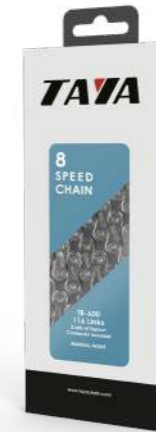
NOVE-91
FINISH:
Ti-Gold
GST-500
Silver/Silver
Silver/Black
Upbeat Series



TB-90
FINISH:
GST-500
Silver/Silver
Silver/Black
Black/Black



OCTO
FINISH:
GST-500
Silver/Silver
Silver/Black



TB-600
FINISH:
GST-500
Silver/Silver
Silver/Black
Black/Black



TB-50
FINISH:
GST-500
Silver/Black
Black/Black

TB-15
FINISH:
Silver/Black
Black/Black



TB-408
FINISH:
Gold/Gold
Gold/Black
Silver/Silver
Silver/Black
Black/Black



EL-408
FINISH:
Silver/ Silver
Black/Black



SUPER SINGLE-a
FINISH:
GST-500
Silver/Silver
Color Options



408H
FINISH:
GST-500
Silver/Silver
Black/Black
Color Options

410H
FINISH:
GST-500
Silver/Silver
Black/Black
Color Options



410B
FINISH:
Gold/Gold
Silver/Silver
Silver/Black
Black/Black
Color Options



EL-410
FINISH:
Gold/Gold
Silver/Silver
Black/Black
Color Options



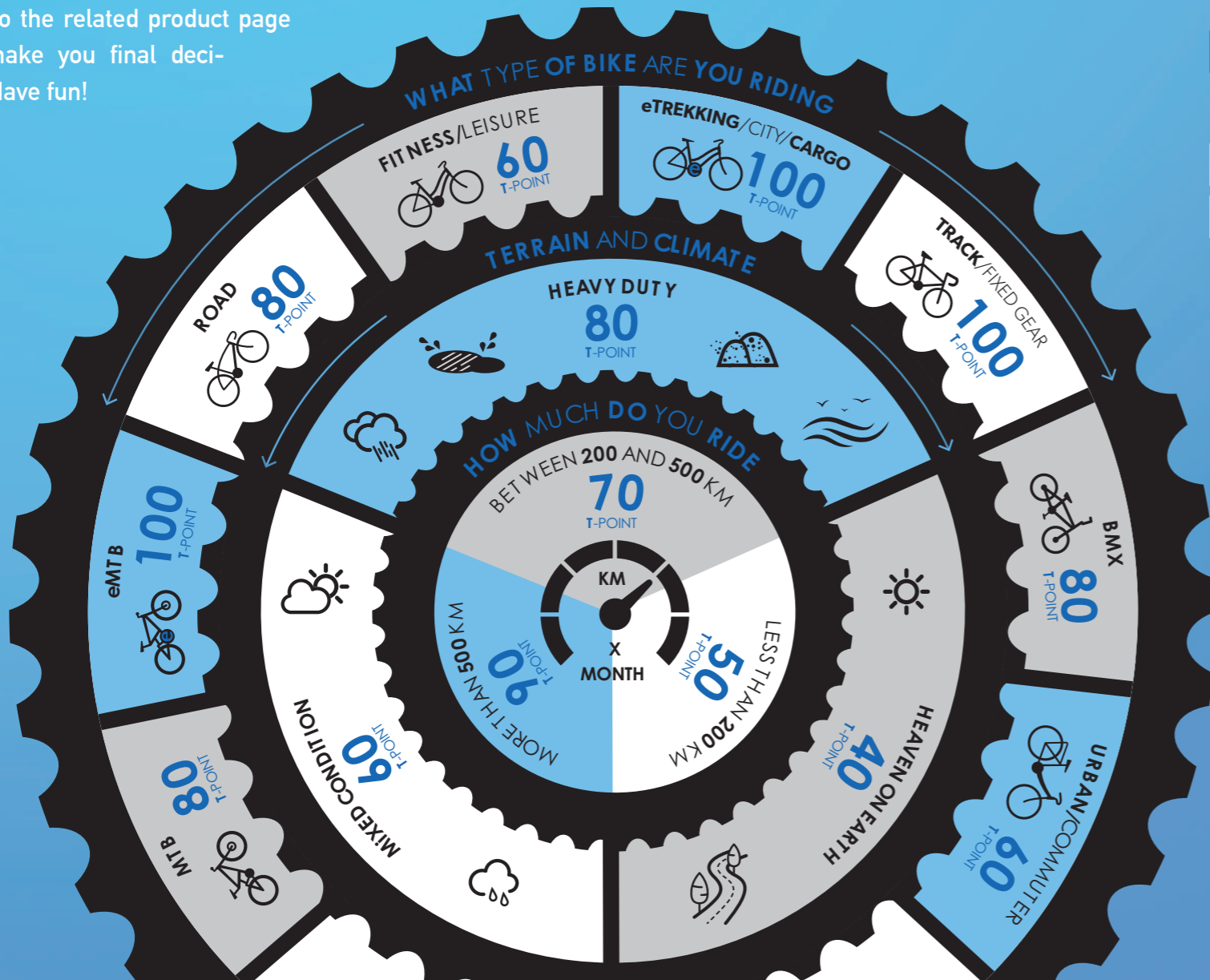
eONZE-111
eDECA-101
eNOVE-91
eOCTO-DH
eTB-910-DH
FINISH:
GST-500
Silver/Silver

CHOOSE YOUR CHAIN

CHOOSE YOUR CHAIN IN 5 EASY STEPS WE HAVE CHAINS FOR ALL TYPES OF BIKES.

1. Select the type of bike you are riding and grab your first T-Points
2. Select the type of conditions you are normally riding in, and add more T-Points
3. Get the last T-Points depending on how much you ride per month
4. Check the number of speed (sprocket) your cassette carries
5. Move to the T-Chart on the opposite page to find out the most suitable chain models

For more details on each chain model, refer to the related product page and make your final decision. Have fun!



EXAMPLE

| | |
|--|-------|
| | 100 + |
| | 80 + |
| | 70 + |

T-POINTS 250 =

My cassette carries
10 SPEED DECA

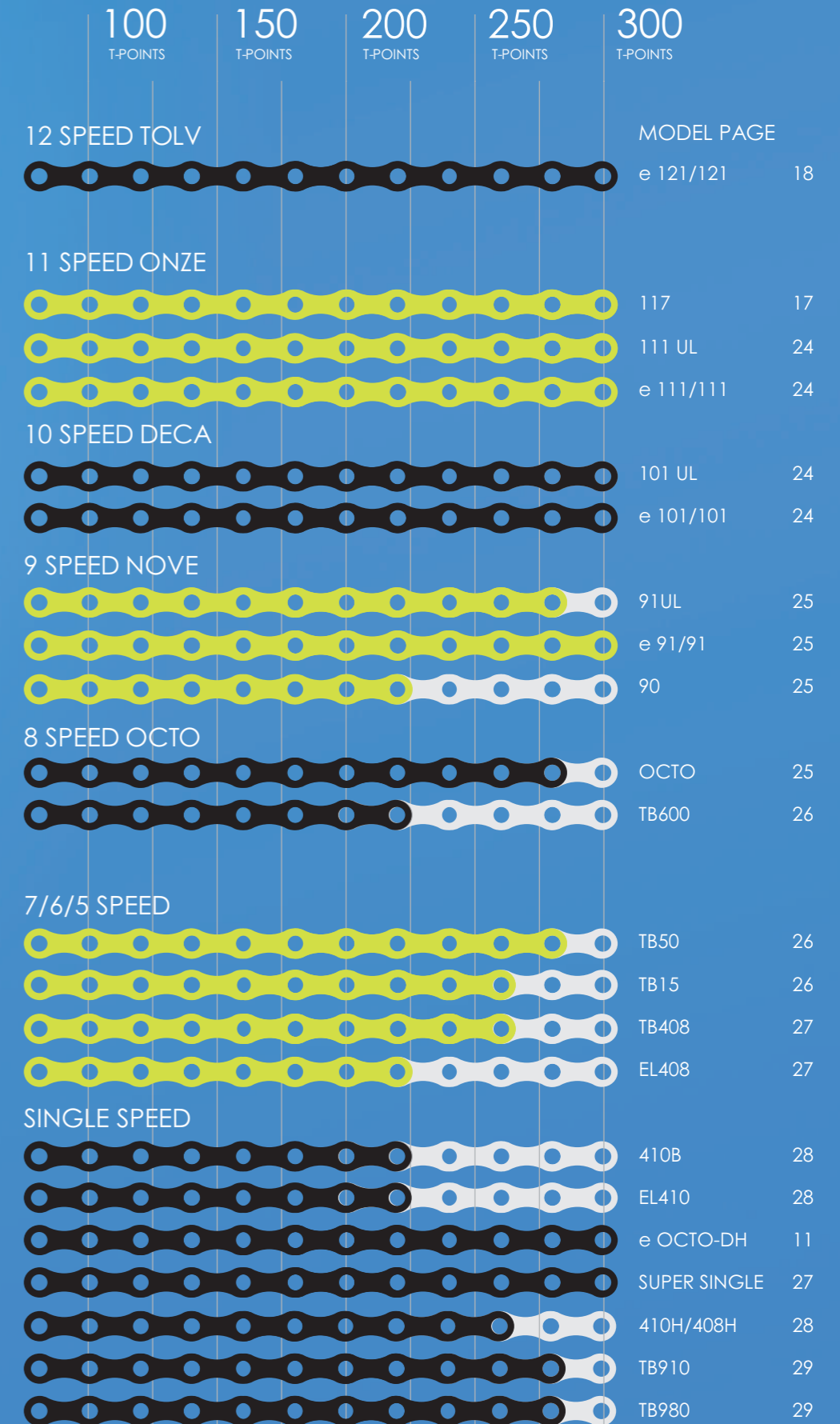
> 250 T-POINT

My perfect chain is

e101

101UL

T-CHART





www.tayachain.com

No.30, Zhong-Shan Rd.,
Ren-De Dist., Tainan City 71752,
Taiwan (R O C)

TAYA CHAIN CO.,LTD.
info@tayachain.com
TEL / +886-6-2703166
FAX / +886-6-2703176

