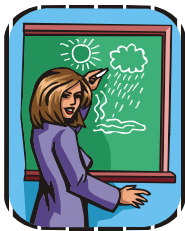
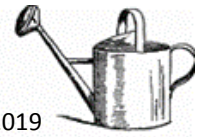


Horticulture News

Rockport Garden Club, March 2019



Horticultural Classroom: Winter Care

Winter Pruning is an important task in every garden because it allows you to control shape and height, remove diseased or crowded branching, encourage blooming, and stimulate plant growth. However, timing of the pruning is important to avoid stimulating growth at the wrong time, or disrupt a flowering cycle. Now is the time to do winter pruning, early spring, before new growth starts. To rejuvenate an older shrub, cut the oldest branches down to 6" but do not remove more than a third of the plant in one year. For more information see the *Shrub Pruning Calendar* under "Articles" on RGC's website.



Controlling Winter Moths

Winter Moth larvae (inchworms) feast on leaf buds and flower buds of your deciduous trees causing short-term leaf damage and long-term stress and potential dieback of your tree. The time to spray dormant oil (to smother the overwintering eggs) is before the caterpillars hatch and when temperatures are above 40 degrees. For more information see *Winter Moth* found under "Articles" on RGC's website.

Starting Seeds Indoors

Cool weather vegetable seeds (onions, kale, etc.) can be started indoors now for transplanting outside in April. Warm weather vegetables (peppers, tomatoes, eggplant, etc.) can be started in late March or early April for planting out in May. For more information see *Seed Starting Indoors* under "Articles," and a Seed Planting Schedule here: <https://www.johnnyseeds.com/growers-library/seed-planting-schedule-calculator.html>. Enter the last frost date, approximately April 30th here.



March Garden Reminders

- Rake perennial beds to prepare for compost or fertilizer
- Edge beds
- Cut cold-season ornamental grasses to the ground
- Prune roses before the buds swell
- Time for winter pruning
- Apply dormant oil to shrubs and trees to smother overwintering insects and eggs (to make your own: add 1/2 cup of canola or safflower oil and a few drops of dishwashing liquid to one gallon of water. Spray when above 40 degrees).



Happenings

Earth Day, Saturday, April 27th from 8–1. Rockport's celebrations include nature talks, tours, and other activities. Find more information at <https://www.rockportma.gov>.

- Workshop, "Create Your Own Container Garden," Thursday, May 2nd, 10–Noon, Nunan Florist & Greenhouses. There will be a small materials fee; carpooling will be arranged. More details will be provided in the April issue.

Questions? Contact the Horticulture Committee:

Mary Moorby: moorbymary@gmail.com; *Nan Blue:* blue.mail@comcast.net;
Nanette Edwards: nanetessa9@gmail.com; *Lizzy Fotouhi:* lfotouhi@gmail.com