

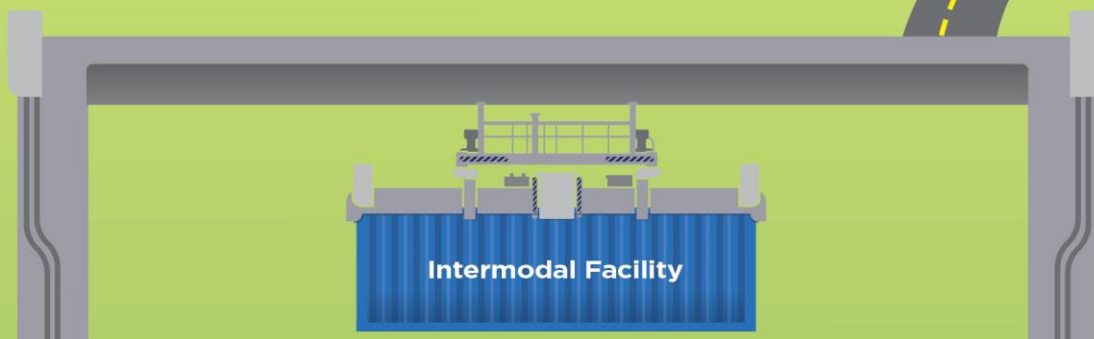
WHAT IS INTERMODAL?

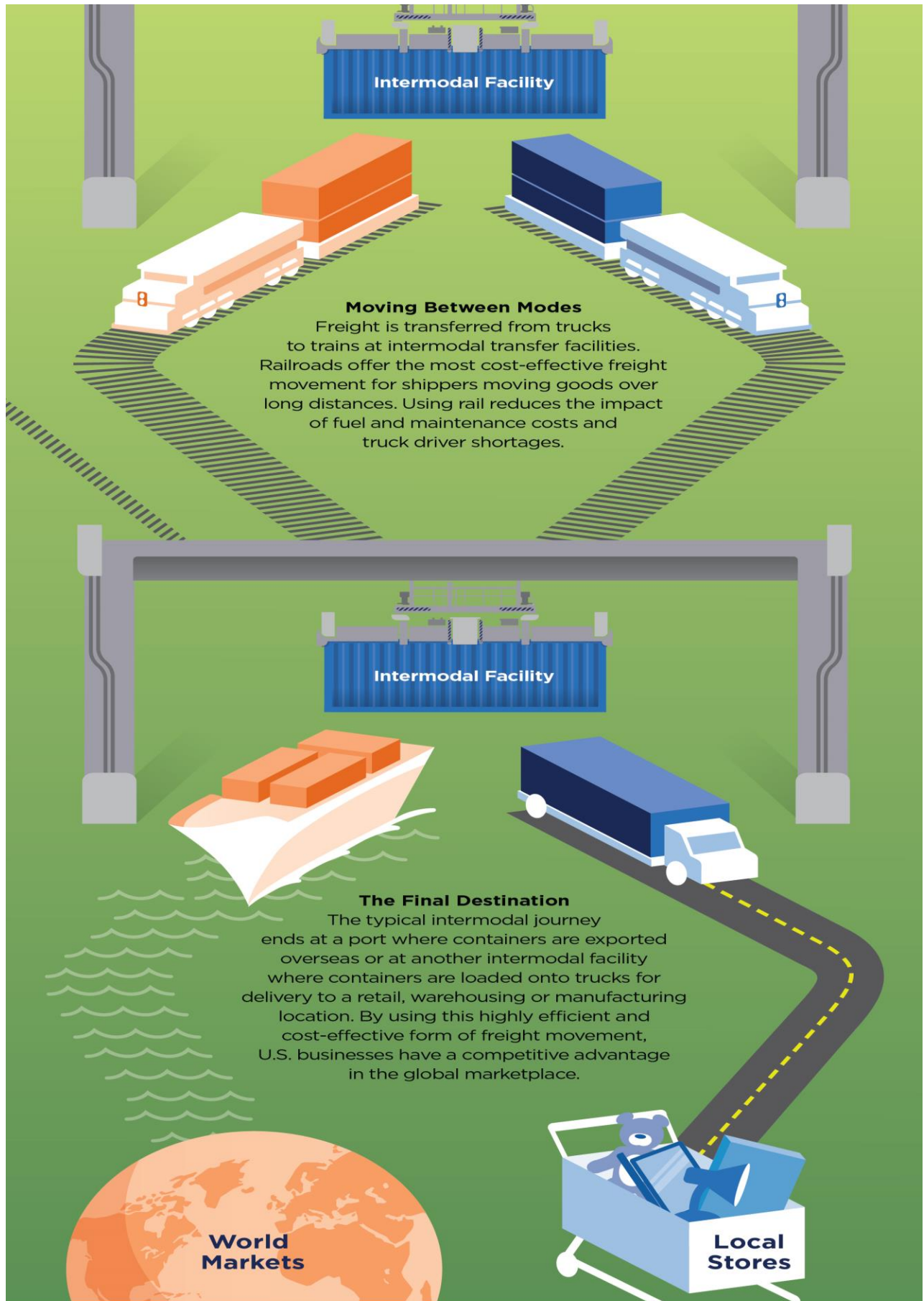
Intermodal uses multiple modes of transportation — trucks, ships and trains — to transport a huge variety of the goods Americans use every day. This system combines each mode's strength to produce the most efficient freight movement.



Beginning the Journey

A typical intermodal journey begins at a manufacturing facility where containers are packed and loaded onto trucks or rail cars. Railroads have invested billions on new intermodal terminals, track upgrades and other infrastructure projects that provide customers, large and small, with access to intermodal.





Investing in the Future of Intermodal

Continued investment enables freight railroads to meet the changing needs of their customers. From technological improvements to new facilities, railroads provide access to efficient and cost effective intermodal service — benefiting shippers, the U.S. economy and you.



Terminals in new or underserved markets provide intermodal access to small and medium-sized shippers for the first time.

Expanded track capacity helps meet the needs of existing customers and provides the foundation for future growth.

Hi-tech cranes lead to faster, more efficient loading and unloading of trains and increase the number of container lifts per year.

New gate and optical scanning technology allows trucks to move freight through the facility faster and improves productivity.

New rail facilities adjacent to or on docks improve efficiency at ports, and benefit local residents by reducing truck traffic and improving air quality.

