

RESERVOIR

SIMULATION SUITE

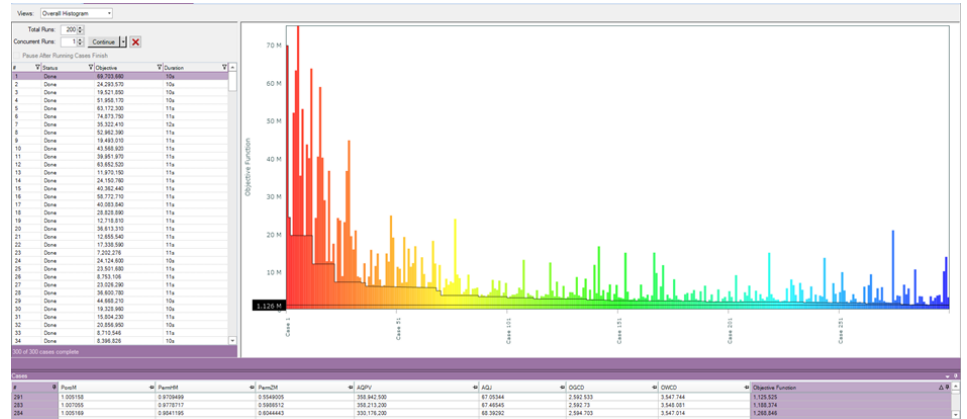


KEY FEATURES

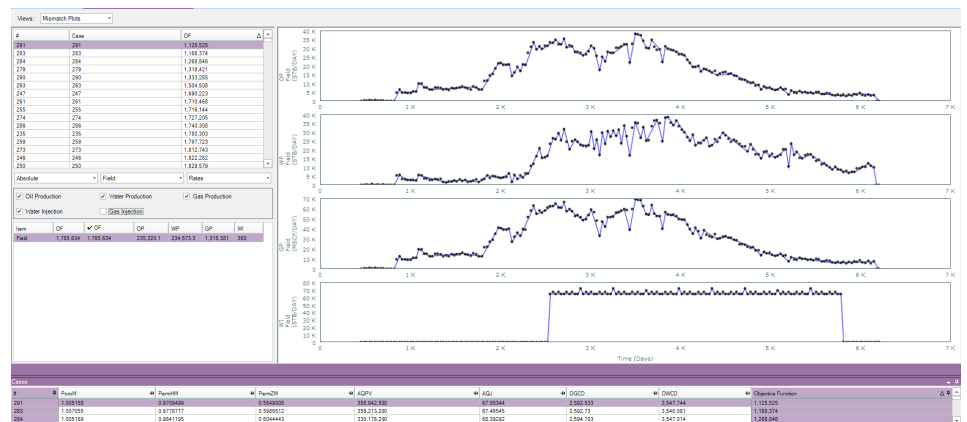
- Easy to use and set up runs
- Powerful
- Cost-effective
- Find matches in fewer runs
- Works with MetEOR, UTCHEM, Eclipse and ECHELON
- Can find solutions with a large number of parameters
- Results can be analysed as the workflow is in progress
 - ◆ Early assessment, termination and modification is simple
 - ◆ Detailed results view to identify problem to identify problem areas
- Histogram, mismatch and scatter plots, along with R^2 tables
- Matches against all production, injection, concentration and pressure data
- Standalone execution or HPC/LSF systems
- Unit conversions handled automatically
- Easy creation and adjustment of objective functions
- Uses Particle Swarm Optimisation, Differential Evolution or Bayesian Optimisation
- Can handle specialised workflows such as core floods or tracer tests

Main Features

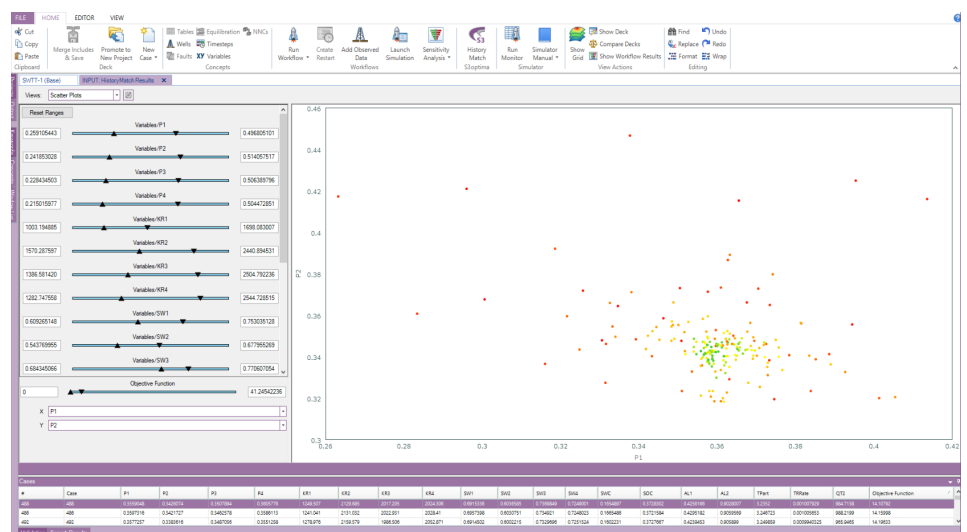
S3optima is an assisted history matching tool which is easy to use, powerful, fast and cost-effective. It allows engineers to set-up history matching workflows by means of its observed data import wizard and via its simple dialogue box driven process to add parameters, set weights and define objective functions. Various matching strategies can be employed and tailored depending on the situation.



History match results (Overall histogram)



History match results (mismatch plots)

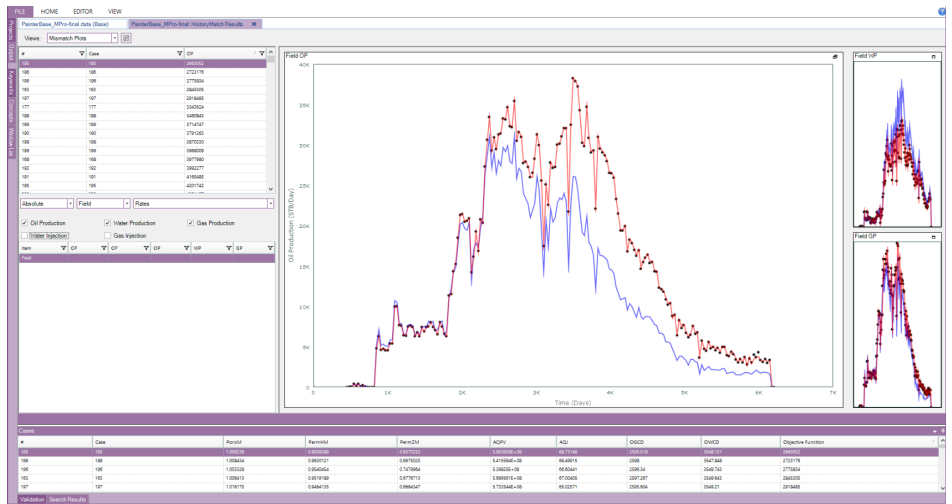


History match results (scatter plots)

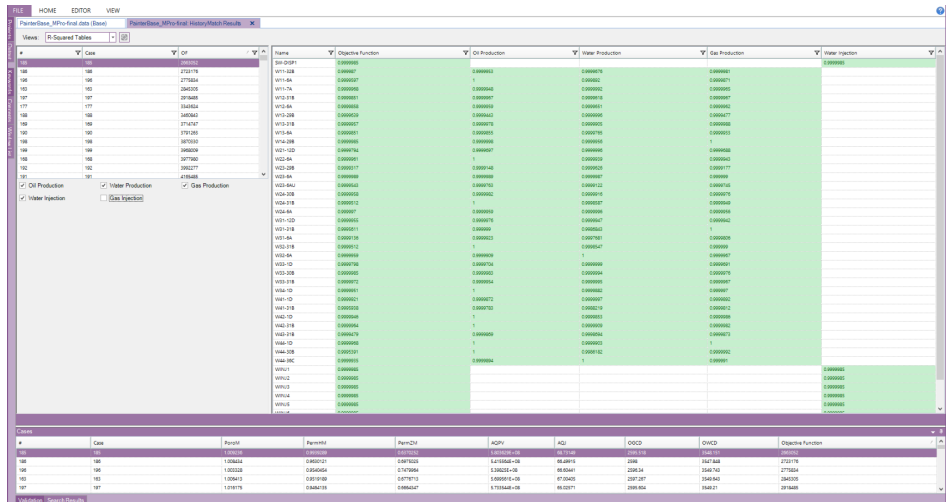


BENEFITS

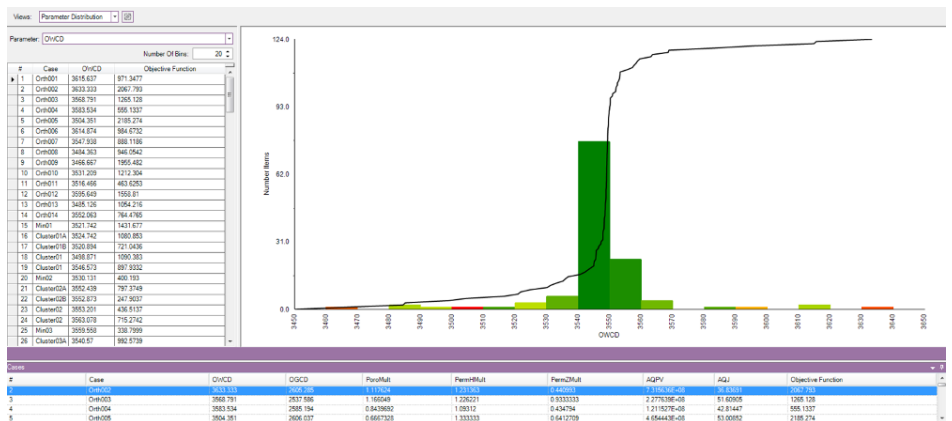
- Simple to use
- Powerful
- Cost-effective
- Finds matches with fewer runs



History match results (line plots)



History match R-squared tables



Parameter distribution



Sciencesoft Ltd
Moorpark House
11 Orton Place
Glasgow
G51 2HF

tel. +44(0)141 445 0330
Fax. +44(0)141 445 2041
E-mail - sales@sciencesoft.com
Website - www.sciencesoft.com
© 2026 Sciencesoft Ltd. All rights reserved.
All trademarks are registered

