

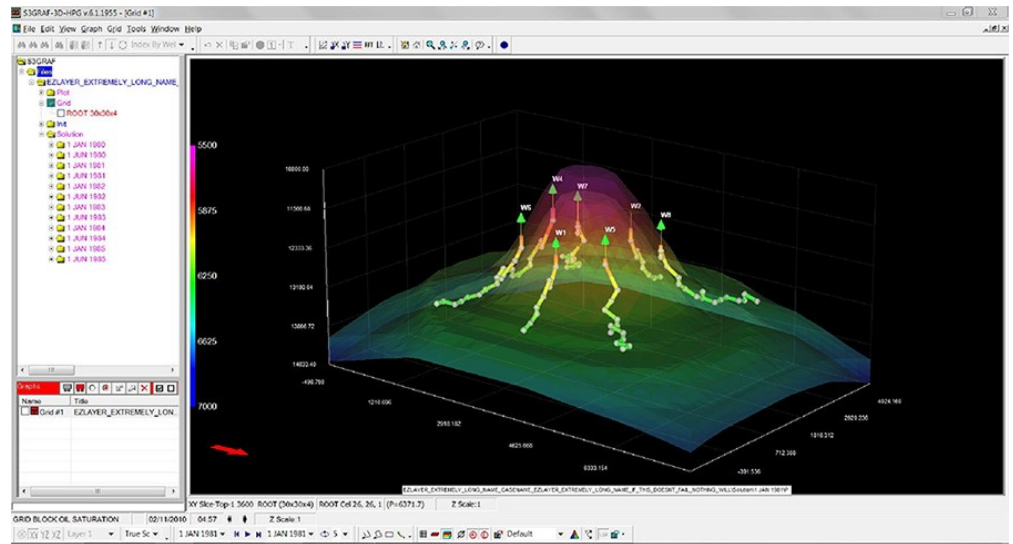
RESERVOIR SIMULATION SUITE

s3GRAF-3D

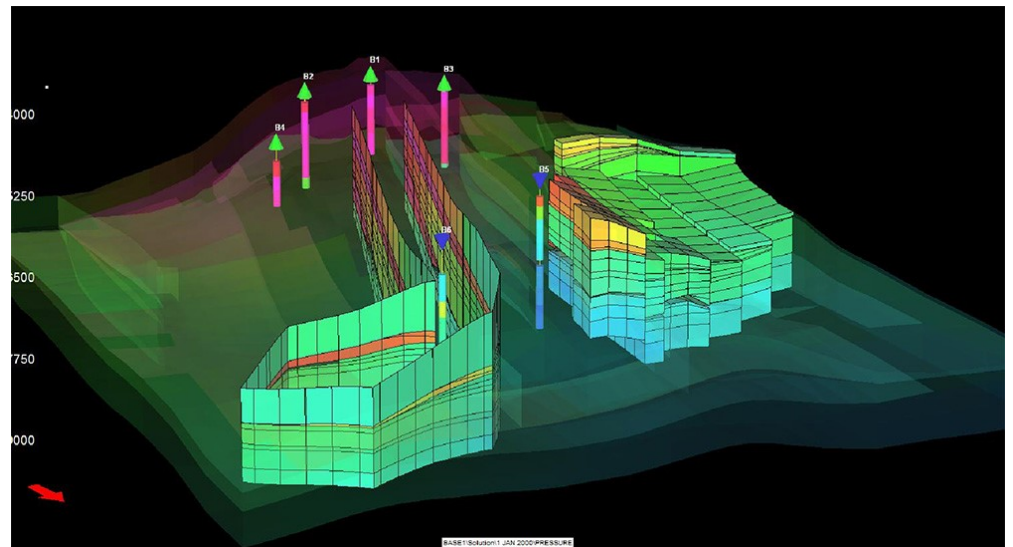
3D at the touch of a button

KEY FEATURES

- Multiple simulator support
- Seamless integration with S3GRAF
- Fetch on demand technology
- Minimum memory mode
- Multiple grids on-screen together
- Batch processing via GRF scripts
- Seamless integration with S3GRAF-HPG add-on module
- User-definable regions:
 - Polylines
 - Polygons (Arbitrary, Rectangular, Radial)
 - Thresholds
 - Grid Clips (Fence Plots)
- Volumetric calculations on field and regions
- User-functions on regions including region combinations
- Automatic reporting to MS Office applications
- Integration with the workflow manager for 3D analysis in workflows
- Exporting of properties for reintroduction as include files to the simulator model
- Statistics of displayed grid cells



Well tracks view



Polyline and polygon

- **Advanced 3D visualisation**
- **Multiple grids on screen for faster analysis**
- **User-definable properties (derived quantities) on grid regions**
- **Extensive range of 3D functionality**

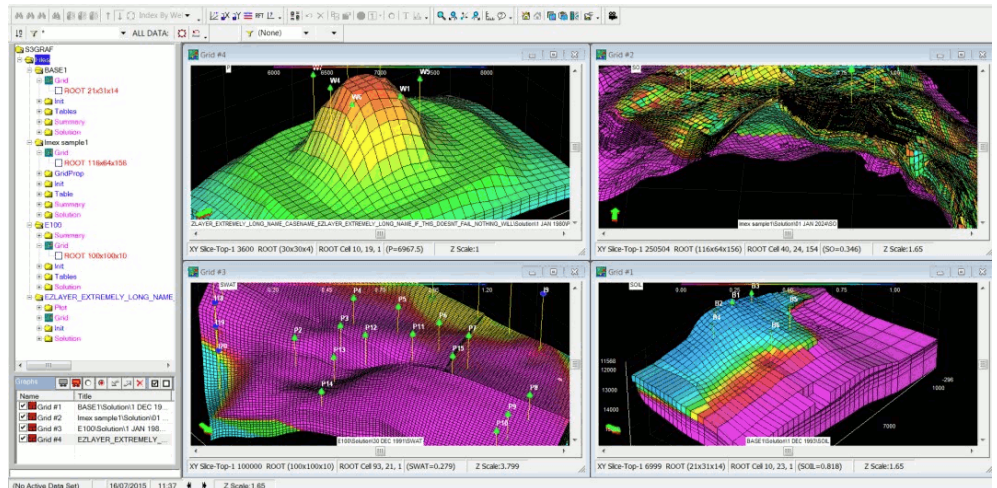
BENEFITS

- Advanced 3D visualisation enables faster access to the model
- Multiple grids on-screen for faster analysis
- Enhances productivity
- Multiple simulator support, allowing standardisation
- Fast data loading and plotting
- Calculations capabilities on user-defined grid regions

S3GRAF is the powerful 3D component of S3GRAF which enables 3D visualisation and analysis of reservoir simulation models.

It is both easy-to-use and flexible in that it supports the widest range of simulators in the market including tNavigator, Eclipse, CMG, VIP, Nexus, Streamline (FrontSim and 3DSL) and UTCHEM.

Within **S3GRAF-3D** there are many advanced features and functions, enabling the reservoir engineer to quickly define and focus on regions of interest. Multiple views can be displayed on-screen simultaneously, from multiple simulators, for rapid analysis and decision making.



Multiple linked grids

Other Features

- Simple movie recording
- Integration with the workflow manager for 3D analysis in workflows
- Exporting of properties for reintroduction as include files to the simulator model
- Statistics of displayed grid cells
- Wide array of 3D visualisation functionality:
 - Rotate, pan , zoom.
 - View grid properties through time
 - Grid linking with copy and paste options
 - Streamlines
 - Cut Plane
 - Well Tracks
 - Explode view
 - Isosurfaces
- Simple movie recording
- Integration with the workflow manager for 3D analysis in workflows
- Exporting of properties for reintroduction as include files to the simulator model
- Statistics of displayed grid cells



Sciencsoft Ltd
Moorpark House
11 Orton Place
Glasgow
G51 2HF

tel. +44(0)141 445 0330
Fax. +44(0)141 445 2041
E-mail - sales@sciencsoft.com
Website - www.sciencsoft.com
© 2026 Sciencsoft Ltd. All rights reserved.
All trademarks are registered

