



**WINDOW & DOOR
PRODUCT GUIDE**

LOEWEN WINDOWS & DOORS

Loewen is the leading manufacturer of premium windows and doors for the luxury architectural market in North America and abroad.

Handcrafted

We are committed to producing handcrafted windows and doors. Our expert artisans ensure our fit-and-finish is unparalleled. These craftspeople are supported by high-tech, automated technologies, but it's the skilled hands in our makerspaces that have earned us our reputation among discerning architects, builders, and homeowners.

Authentic

We use authentic materials of the highest quality. At our core, Loewen is a designer and manufacturer of wood windows and doors. We use solid wood laminations, not veneers. Our extruded aluminum is the highest quality. Our operating hardware is bronze, brass, zinc, and stainless steel - all genuine materials, not imitations.

Enduring

Our designs are Enduring, both aesthetically and in performance. We work tirelessly to create products that are timeless, whether that means being true to historical architecture or by creating a lasting contemporary design. Behind the outward beauty is a functional performance that gives you an industry-leading experience for years to come.





CONTENTS

Product Features	6	Doors	26
Wood Species	8	Swinging Doors	28
Glazing	10	LiftSlide	30
Aluminum Cladding	11	BiFold	31
Colors & Finishes	12	Patio	32
Custom Shop	14	MultiSlide	34
Windows	16	Door Hardware	36
Awning/Casement	18	Timber Curtain Wall	42
Picture/Direct Set	20	Cyprium Collection	44
Double/Single Hung	21	Stormforce Series	46
Window Hardware	23		

PRODUCT FEATURES

Our materials, our finishes, our custom capabilities, and our commitment to our product are integral to the Loewen experience.



WOOD SPECIES

Authenticity is at the core of our product design, we continuously utilize genuine materials.

Coastal Douglas Fir - Our Standard

Douglas Fir is North America's most plentiful softwood species; Loewen provides Coastal Douglas Fir as our standard because it is the best species for luxury projects. Coastal Douglas Fir is the premium grade of Douglas Fir, being the strongest and most durable of all the soft woods. Not only does it give our products a rich, warm texture, it is also remarkably tough and resilient. By choosing Coastal Douglas Fir as our standard we promise a beautiful future for our customers.

FEATURES

The strength of Coastal Douglas Fir lies in its high natural resistance to moisture absorption, decay, and insect infestation

Coastal Douglas Fir out-performs other Douglas Fir species and vastly outperforms other soft wood species (such as pine, etc.)

Solid Coastal Douglas Fir is our standard where it is an upgrade for others; when offered as an upgrade, many of our competitors typically only provide it as a thin veneer over lesser materials



Additional Wood Species

Honduran Mahogany

Genuine Honduran Mahogany (*Swietenia Macrophylla*) is naturally resistant to decay and is far stronger than African Mahogany. This species offers a rich grain with a short, light swirled pattern. When first cut, its colors range from rose to light brown. As the wood ages, it transforms to its distinctive reddish-brown color.

Accoya®

The molecular structure is modified from the core to the surface to create an incredibly stable material for windows and doors. Acceptance of paint and stain finishes as well as overall resistance to rot and decay is better than many of nature's most durable wood species.

White Oak

Strong and straight grained, this beautiful species is highly sought after due to its durability and ability to accept stain finishes.

**Cherry, Alder, Teak, Walnut, Incense Cedar, and other species available upon request.*



Mahogany



White Oak



Accoya®



GLAZING

With countless glazing configurations and LowE coating options, we ensure the perfect blend of protection and comfort - no matter where you live.

Glass performance has always been our forte. Our industry-leading performance is due to our exceptional glazing and design specifications. We have partnered with like-minded innovative glass fabricators to supply technologically advanced sealed units that get bigger by the day.

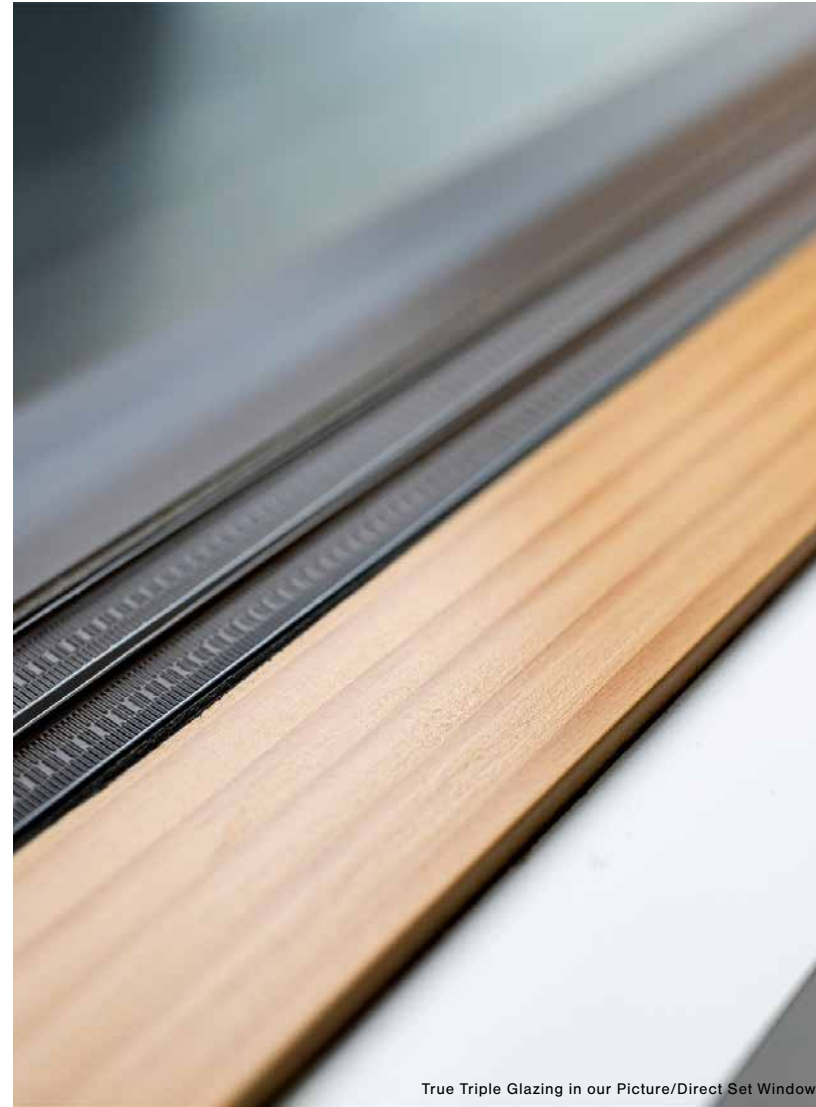
FEATURES

Standard venting channel beneath the sealed unit for long unit life

Loewen True Triple sealed units include optimal 1/2" airspaces between the glass to optimize energy efficiency

Black stainless steel spacer bars are our standard, resulting in a sophisticated and contemporary aesthetic

We hold our suppliers to a higher-than-industry standard through enhanced inspections and audits



True Triple Glazing in our Picture/Direct Set Window



Extruded Aluminum Cladding on our French Doors

ALUMINUM CLADDING

Our extruded aluminum cladding is intricately detailed and withstands serious impact without sustaining damage.

Loewen uses only pre-finished extruded aluminum cladding to better protect window and door exteriors and eliminate the need for painting. Our thick extruded aluminum cladding retains its shape, resists denting and lasts longer than roll-formed aluminum. In addition, Loewen's window cladding is set away from the underlying wood, creating an airspace that improves performance.

FEATURES

Withstands serious impact without sustaining damage

Allows intricate extrusion detailing

Provides the malleability necessary to clad many sizes and shapes

Delivers unequalled environmental durability

Provides a stable substrate that enhances paint and anodized performance

STANDARD PALETTE

Beautiful and durable finishes for our extruded aluminum

Painted Clad Finishes (AAMA 2605 / 70% Kynar)

Loewen's finish palette provides the perfect finishing touch for fulfilling your vision, while also providing industry leading quality and performance. Loewen's paint formula includes 70% Kynar 500 PVDF (polyvinylidene fluoride) resin, which offers the greatest resistance to weathering, fading and chalking. This ensures a beautiful finish that will last with minimal maintenance. With excellent appearance and durability, these paints meet the specifications of the American Architectural Manufacturers Association (AAMA) 2605.

Anodized Finishes (AAMA 611)

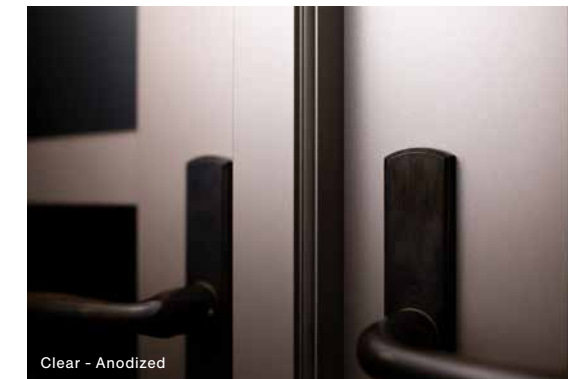
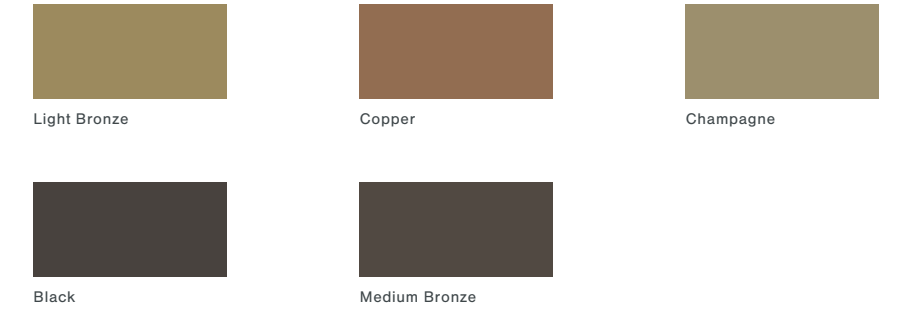
For a durable alternative to paints and organic coatings, our Anodized Finishes offer a rich matte look that reduces sunlight glare and allows the aluminum to maintain its metallic appearance. In addition to the aesthetically desirable etching, our Anodized Finishing also increases resistance to abrasion and corrosion on aluminum. This aluminum is 100% recyclable and uses a waterbased process with no volatile organic compounds for eco-friendliness.



CUSTOM PALETTE

Enhancing our Standard Palette, our Custom Palette includes a few extra anodized finishes and the option to configure your own custom paint colors. The integral cross matching system and color approval process ensures that you get the exact custom paint color you want every time.

Additional Anodized Finishes



Warranty

Loewen provides one of the strongest warranties in the industry, because it is backed by years of experience, high quality products, and a dedicated network of qualified technical service professionals.

CUSTOM SHOP

Our highly regarded Custom Shop works in unison with our customers to create unique, made-to-order pieces.

We understand that no two projects are exactly alike. Design is fluid and ever changing, and our highly-regarded Custom Shop works in unison with our customers to create distinctive pieces based on their specific design requests. Whether you are looking for custom glazing, custom species, distressing, stains, or custom exterior casings, we can provide a solution for you.

Examples of Custom Operations and Configurations

- Large pivot doors
- Custom entry doors
- Strut operated pass through awnings
- Tilt/turn window
- Dutch doors
- Inswing Casements
- Hoppers
- Pre-finishing (paint or stain)



Dutch Door Triple Glaze



Tilt Turn

Interior Paint Prefinishing

Loewen offers two standard factory applied, interior paint finishes for Douglas Fir units. Pre-finishing is available in Jet Black or Oxford White high-performance acrylic paint.

All parts are prepped and painted before final unit assembly. The application includes multi-step process including sanding between coats as well as time in the drying ovens. Final application is a multi-coat acrylic waterborne paint specially formulated to provide exceptional finish properties.



Jet Black



Oxford White

Interior/Exterior Stains & Distressing

We offer stains for our wood products through our Custom Shop. Due to the expertise and consistency required to properly finish wood products to our standards, a limited range of stains are provided. In addition to staining, optional wire-brushed distressing can be applied.



Cedar



Cinnamon



Clear



Coastal Grey



Ebony



Red Mahogany



Rich Mahogany



Spanish



Spanish Oak



Tuscon



Western

WINDOWS

Our standard window products include Awning, Casement, Picture/Direct Set, Double Hung, and Single Hung.



AWNING/CASEMENT

Loewen Awning/Casement Windows are practical and beautiful.

Loewen pushout and roto gear operating windows provide superior ventilation and easy operation. Casements shut tightly and provide one of the highest thermal performance ratings of any operating window style. Loewen makes six distinct styles of AW/CA windows, which are also available in specialty shapes.

FEATURES

Paired with proprietary roto gear cranks and covers in traditional and contemporary styles with all metal components, this sophisticated hardware is highly durable and provides effortless user interaction

Our retractable screen is seamlessly integrated into the window and does not impede on the viewing area; units with retractable screens all have complimentary sight lines for a consistent design aesthetic

Loewen True Triple sealed units feature optimal 1/2" airspaces between the glass, which maximizes energy efficiency

Solid wood moldings

Concealed black jamb liners improve water management and thermal performance



LaRue Architects | Casey Dunn Photography



Pushout Handle



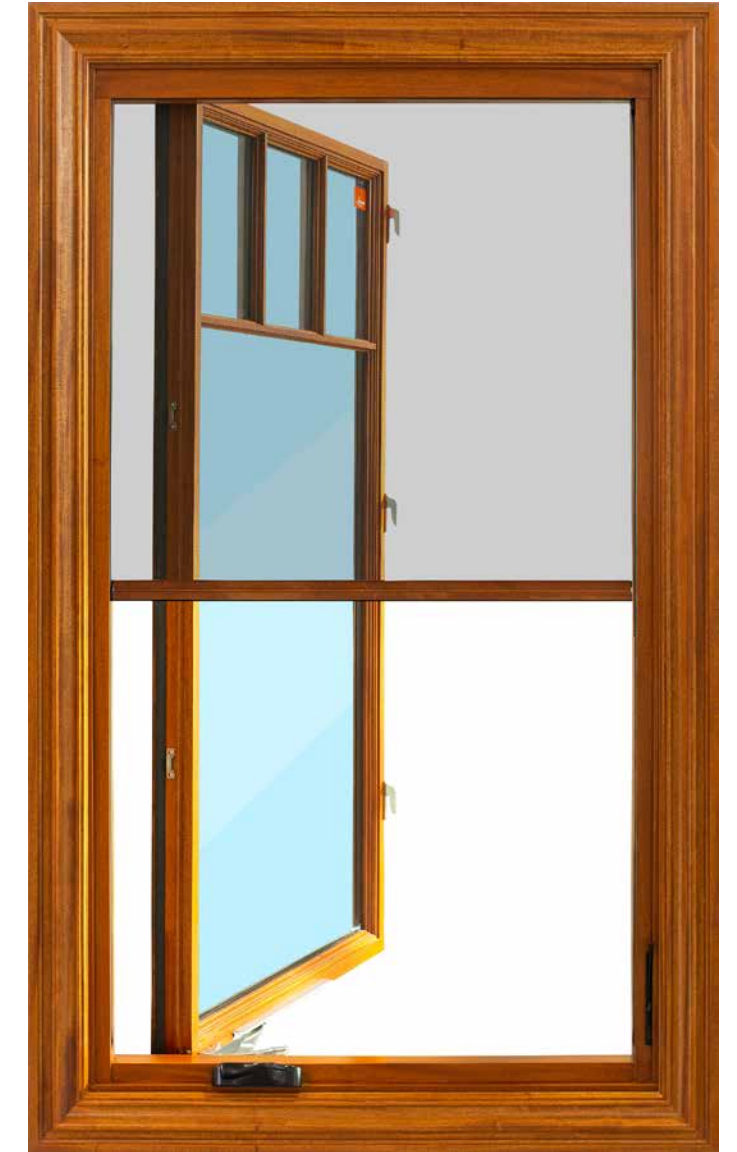
Pushout Screen Knob



Concealed MultiPoint Lock Handle

Automated Awnings

In addition to crank and pushout awnings, we also offer automated awnings. In scenarios where your awning is too high to reach, an automated system allows you to open this window with nothing more than the push of a button.



Retractable Screen

PICTURE/DIRECT SET

Loewen's Picture/Direct Set window is the definition of sleek design.

These windows maximize views with minimal solid wood framework, resulting in a high-performing product with an unmatched aesthetic. Offered in a variety of shapes and sizes, they are the perfect complement to any style of architecture.

FEATURES

Minimal design is free from interior glazing stops for a clean aesthetic

New design offers increased energy efficiency and an expansive viewing area with larger glass

Exterior-glazed for easier on-site installation of oversized glass units

Designed with "rain screen" principles which allow for water deflection



Creative Union Architects | Riley Snelling Photography

DOUBLE/SINGLE HUNG

Double Hung windows are proof that classic looks never go out of style.

Loewen's Double Hung complements the depth and character of the traditional North American home while delivering the progressive performance it deserves. Through years of research and design with architectural experts, we are able to seamlessly blend traditional aesthetics with leading-edge technology.

FEATURES

Authentic design and joinery (stile and rail aesthetics, tall bottom rail, narrow checkrail)

Our proprietary sash lock boasts an architecturally-correct design and smooth, single-handed operation

Jamb jacks are included with every unit, adding to a smooth and seamless installation

Triple glazed options (grand sash) for improved energy efficiency

Concealed jamb liners for traditional aesthetics

Dark colored weatherstripping is consistent with all other product lines



Poyer Architects | Meredith Brockington Photography



WINDOW HARDWARE FINISHES

Double Hung

Sash Lock



Satin Nickel



Oil Rubbed Bronze



Matte Black



White



Faux Bronze



Antique Brass



Linen



Brushed Chrome



Polished Brass

Rotogear

Contemporary



Satin Nickel



Matte Black



White



Faux Bronze

Tango



Satin Nickel



Oil Rubbed Bronze



Matte Black



White



Faux Bronze



Antique Brass



Linen



Brushed Chrome



Polished Brass

Provence



Satin Nickel



Oil Rubbed Bronze



Matte Black



White



Faux Bronze



Antique Brass



Linen



Brushed Chrome



Polished Brass

Pushout

Contemporary



Satin Nickel



Oil Rubbed Bronze



Matte Black



White



Faux Bronze



Linen



Polished Brass

Traditional



Satin Nickel



Oil Rubbed Bronze



Matte Black



White



Faux Bronze



Antique Brass



Linen



Brushed Chrome



Polished Brass



Rustic Bronze



Unlacquered Brass

DOORS

Our standard door products include Swinging, Sliding Patio, BiFold, LiftSlide, and MultiSlide.



SWINGING DOORS

Expansive glass areas and meticulously designed and engineered construction.

Available in out-swing and in-swing versions with standard or narrow rails and stiles. Standard doors have a top rail and stiles with face widths of 4⁷/₈" and a bottom rail that is 7⁷/₈". Other design options include mid-rail and flat or raised panel doors, fixed or venting sidelites & transoms, and barrier-free Sillls (ADA compliant).

FEATURES

Elegant European-style multipoint lock system with standard stainless steel components for corrosion resistance

Standard stile and rail construction with a thick skin of Vertical Grain Coastal Douglas Fir over an engineered Coastal Douglas Fir core

Available with standard 1³/₄" panels or more robust 2¹/₄" thick panels

Our proprietary aluminum storm and screen doors are available in matching AAMA 2605 paint finishes and AAMA 611 anodized finishes

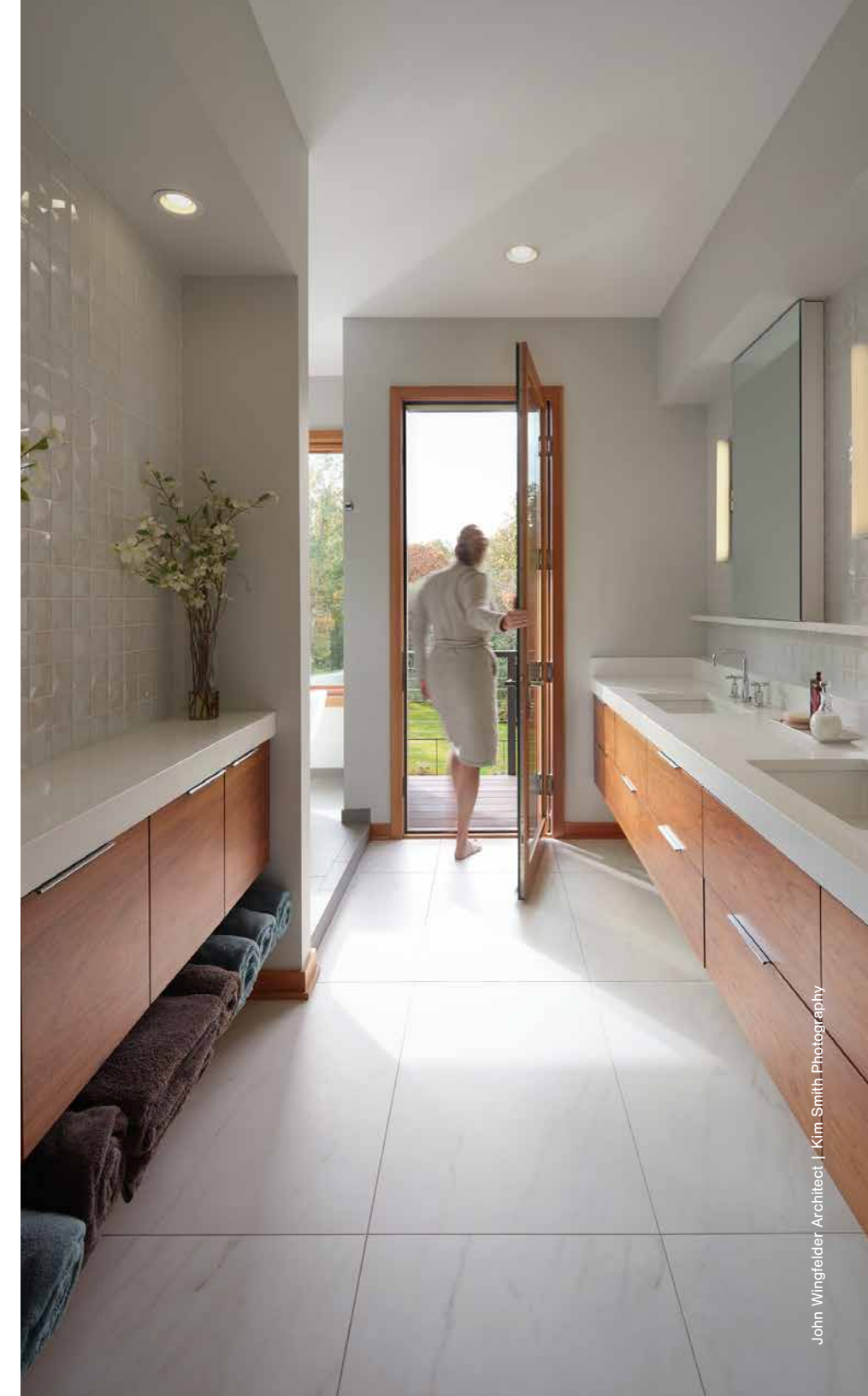


3" Narrow Stile Door

Narrow Stile door options are available for Single Terrace, French Terrace and BiFold doors. These contemporary door panels have minimal stiles and rails for maximum views. The standard panel thickness is 1³/₄", with 2¹⁵/₁₆" wide stiles, a 2¹⁵/₁₆" top rail and a 4⁷/₁₆" bottom rail.

2¹/₄" Door

Our advanced 2¹/₄" panel is engineered for higher performance and a cleaner look. Magnetic strike plates add invisible and automatic security enhancements. True Triple glazing is easily executed giving you better thermal and sound properties. The 2¹/₄" non-clad out-swing door moves all the weather gaskets to the door panel for better performance and an even cleaner look.



John Wingfield Architect | Kim Smith Photography

LIFTSLIDE

LiftSlides, our largest door system, glide almost effortlessly and can be lowered to lock down for weather protection and security.

High structural integrity and threshold options allow LiftSlide doors to be located in areas of high exposure where homeowners desire expansive views - mountain, hillside, coastline, or lakefront vistas. The fiberglass frame option provides superior thermal performance, strength, and durability. LiftSlide doors are available in straight, curved radius, corner, and angled configurations in both jamb and pocketing systems. Custom configurations are available.

FEATURES

Panels up to 7ft wide or 12ft high for maximum opening

Our tested flush track includes integral drainage, creating a seamless transition from interior to exterior

Dual, Triple, and Impact glazing is available to accommodate unique customer needs

Retractable screens can be integrated, allowing for maximum ventilation and protection from insects

Offered in a multitude of configurations to allow for maximum customization; pocketing, stacked, radius and corner units are all available



Lake Flato Architects | Casey Dunn Photography



LaRue Architects | Foursquare Builders | Casey Dunn Photography

BIFOLD

A large opening that makes for a stunning transition to the fresh air and spaciousness of outdoor living.

BiFold Doors are made up of multiple door panels that fold open. Loewen BiFold Doors are available in configurations of up to 16 panels, which allows for openings of up to 52 feet wide. Folding to the outside so as not to disturb interior furnishings, BiFold Doors put outdoor spaces in a new perspective.

FEATURES

Our BiFold Doors use the same panels as our Terrace Doors and French Doors, ensuring seamless continuity of aesthetics between product lines

System-wide configurations of up to 52 feet with panel heights of around 9 feet

Configurations can include a man-door for an alternative entry/exit method

Utilizes the same stainless steel multipoint gear as our swinging doors

Unique to this product, the weight of the door is carried at the head

Retractable screens can be integrated, allowing for maximum ventilation and protection from insects



Narofsky Architecture | Phillip Ennis Photography

SLIDING PATIO

Loewen Sliding Patio doors open up the walls in your home to new possibilities.

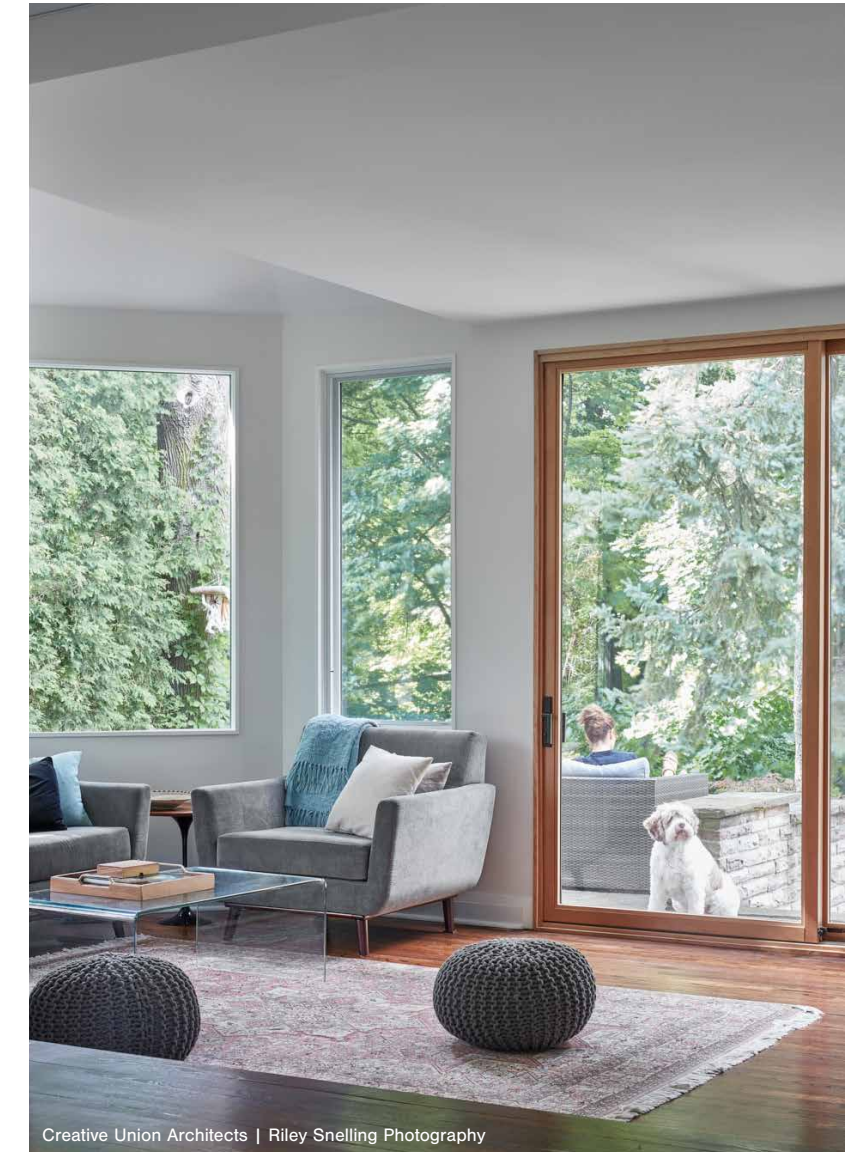
Our easy operating tandem rollers make Loewen patio doors a joy to open. Heavy laminated sash construction and tempered safety glass make these some of the safest patio doors on the market. Security is taken even further by incorporating an anti-panel-lift device into every patio door.

FEATURES

Standard luxurious European multipoint lock system with stainless steel components for corrosion resistance

Standard 2 1/4" thick panels for all Patio and French patio doors which allows for True Triple sealed unit, resulting in maximum energy efficiency

Our standard stile and rail construction is a thick skin of vertical grain Coastal Douglas Fir over an engineered Coastal Douglas Fir core



Creative Union Architects | Riley Snelling Photography

MULTISLIDE

Our MultiSlide doors provide large dramatic openings for the transition from indoor to outdoor living spaces.

With easy, smooth and incredibly quiet operation on stainless steel tracks, these high performing doors operate just as beautifully as they look. With 2 1/4" panels, these sleek doors are the perfect addition to a contemporary project.

FEATURES

2 1/4" thick panel adds superior thermal performance, strength and durability

Large panels provide a greater opening than standard sliding patio doors

Available options include fully automated electronic operation



DOOR HARDWARE FINISHES

Terrace Door

Dallas



Satin Nickel (PVD*)



Matte Black



Polished Brass (PVD*)



Dark Bronze Metallic



Rustic Umber

Verona



Satin Nickel (PVD*)



Oil Rubbed Bronze



Matte Black



Antique Brass



Brushed Chrome (PVD*)



Polished Brass (PVD*)

Meran



Satin Nickel (PVD*)



Oil Rubbed Bronze



Matte Black



Antique Brass



Brushed Chrome (PVD*)



Polished Brass (PVD*)

Rodos



Satin Nickel (PVD*)



Oil Rubbed Bronze



Matte Black



Antique Brass



Brushed Chrome (PVD*)



Polished Brass (PVD*)

Sand Cast Bronze



Churchill Rustic Bronze



Shropshire Rustic Bronze

PVD - Offerings with this designation utilize protective finishes that are appropriate for humid coastal environments.*

MultiSlide & Patio Door

Miami



Satin Nickel (PVD*)



Matte Black



Bronze (PVD*)



Polished Brass (PVD*)



Churchill Rustic Bronze

Sand Cast Bronze

Flush Handle



Satin Nickel (PVD*)



Matte Black

Botticelli



Satin Nickel (PVD*)



Oil Rubbed Bronze



Matte Black



Antique Brass



Bronze (PVD*)



Polished Brass (PVD*)



White



Faux Bronze

Fontana



Satin Nickel (PVD*)



Oil Rubbed Bronze



Matte Black



Antique Brass



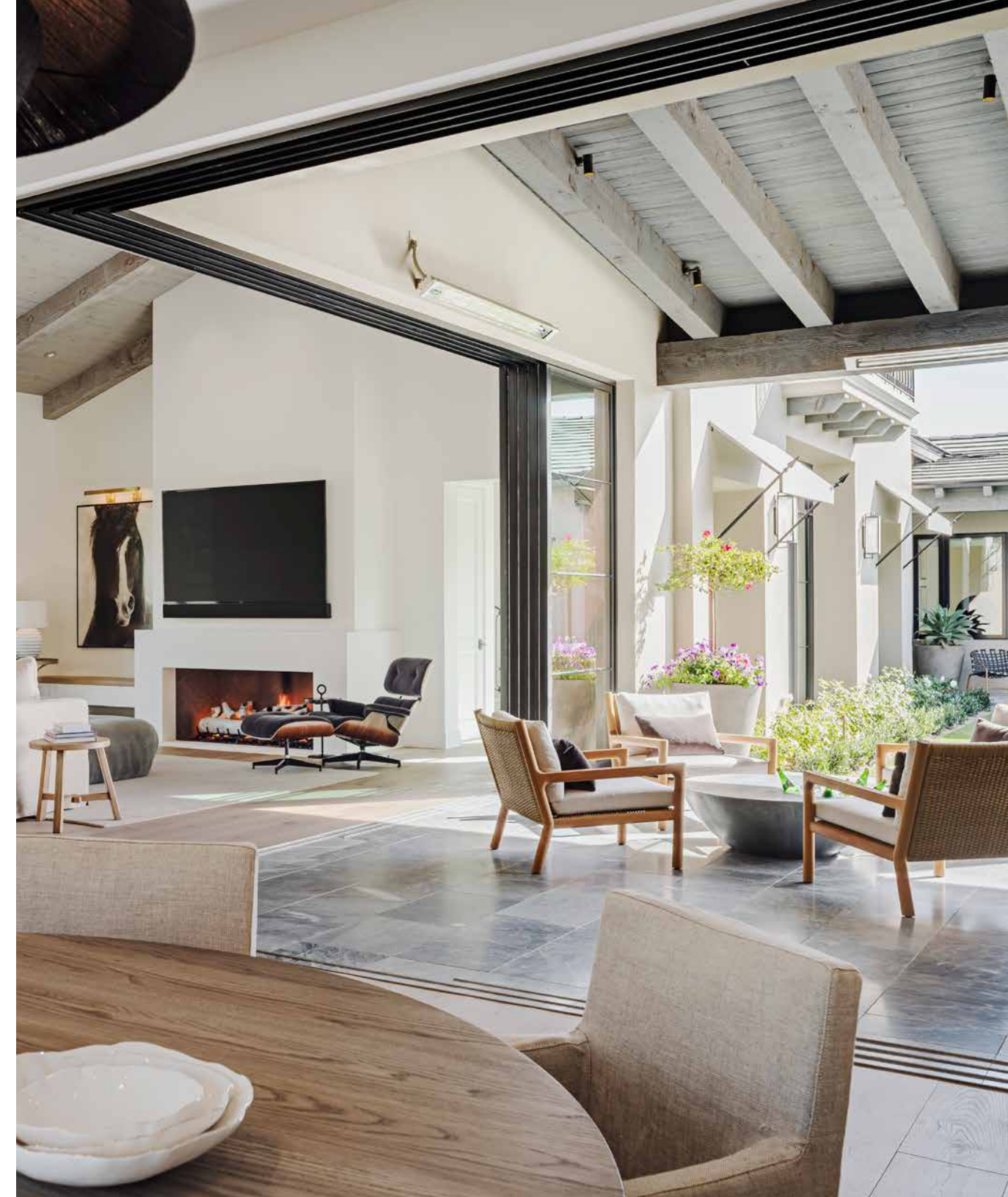
Bronze (PVD*)



Polished Brass (PVD*)



Bronze (PVD*)



LiftSlide Door

Modera



Satin Nickel (PVD*)



Oil Rubbed Bronze



Matte Black



Dark Bronze



Polished Brass (PVD*)

Marcos



Satin Nickel (PVD*)



Oil Rubbed Bronze



Matte Black



Dark Bronze



Polished Brass (PVD*)

Flush Handle



Silicon Bronze Dark



Silicon Bronze Dark Lustre



White Bronze Brushed

Storm & Screen Door

Tampa



Satin Nickel



Oil Rubbed Bronze



Matte Black

Concord



Matte Black



Storm and Screen Door

TIMBER CURTAIN WALL

Advanced European engineering meets modernized design with one of our most recent innovations.

Our Timber Curtain Wall system offers new design possibilities for the architectural community. These impressive contemporary vistas offer slim sight lines and large glass, all without sacrificing performance. The expansive views of our Timber Curtain Wall ultimately work to expand the home, let in more daylight, and enable customers to feel at one with nature.

FEATURES

Structurally engineered wood timbers are available in Coastal Douglas Fir (standard) as well as optional species, including Honduran Mahogany and White Oak

In addition to aluminum cladding, exterior cladding is available in wood or Cyprium

Pre-assembly at our facility (including fasteners and gaskets) ensures a smoother jobsite installation

The water management system, designed to drain water vertically, eliminates unsightly drainage holes on horizontal faces



CYPRIMUM COLLECTION

Loewen's Cyprimum product combines modern technologies with old world appearance.

The Loewen Cyprimum Collection features copper and bronze clad windows and doors unique in design and construction. Besides being clad in copper and bronze, the actual design and construction of these windows and doors is robust and artisanal. All seams are hand-soldered for a distinctive look and architectural authenticity. These hand-wrought living surfaces develop distinctive patinas that adopt and define the individual aesthetic character of the homes to which they belong.

FEATURES

Custom artisan-applied patina for accelerated aging

Common frame cladding and recessed mullions are architecturally correct and authentic

Thick copper and bronze cladding are rarely both offered from the same manufacturer

Authentic exposed solder joinery for water performance and structural integrity



Hand Soldered Joints

Lead-free hand soldered joints render an authentic appearance that is both attractive and functional. Soldered joints create a cohesive body for frame and sash members resulting in a uniform structure.

Recessed Mullion

Recessed from the face of the sill and frame, this classical mullion detail adds visual harmony. Cyprimum's deep sills are well suited to masonry wall construction.



Factory-Applied Patinas

The Copper and Bronze can be factory-patinaed to represent the rich look of years of aging. Copper and Bronze are living materials and the environment plays a huge part in how the finishes will change and deepen with time.

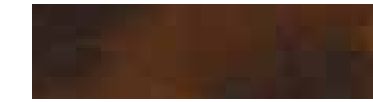
**Photos are representative only and may not reflect the true finishes.*



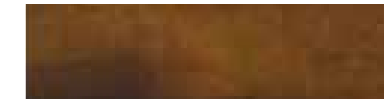
Copper Natura



Bronze Natura



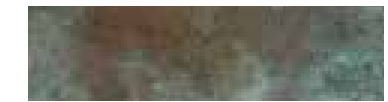
Copper Umbra



Bronze Umbra



Copper Verdigris



Bronze Verdigris

STORMFORCE SERIES

Loewen StormForce Products take the performance of our standard windows and doors to the extreme.

Maximum Protection for Coastal Environments

Our StormForce products are structurally enhanced to meet – and exceed – International Residential Code, Florida Building Code and other Coastal requirements, including the stringent Dade County certification. Each test is conducted by an independent agency, based on extreme conditions and varying product sizes. Code compliance is a fundamental aspect of Loewen design and engineering.

FEATURES

Designed to withstand nature’s harshest elements – hurricanes, tropical storms, high winds, driving rain, sweltering heat, and freezing cold

Unseen structural upgrades – no unsightly brackets and/or locks commonly seen on coastal products

Versatile and enhanced styling – Coastal Douglas fir wood interior standard with the choice of extruded aluminum cladding

Optimal thermal performance – LowE insulated glazing, laminated, and reflective glazing options provide comfort, shading, and peace of mind



studiohw Architects | Jane Messinger Photography

Impact Glazing

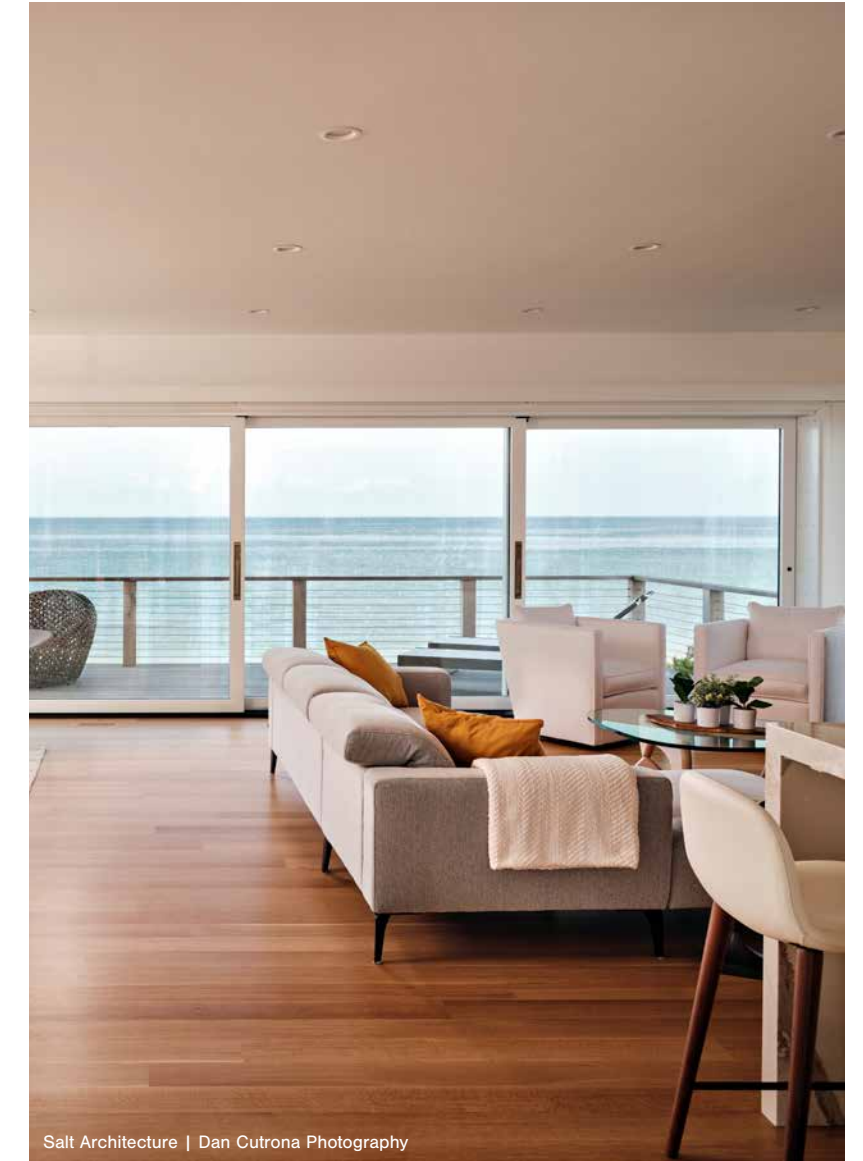
Wind-borne debris can impact homes during windstorms and hurricanes. To protect the integrity and interior of homes, windows and doors must resist penetration and remain in place and intact. Impact designed laminated-glass windows and doors pass windborne debris impact tests, and even when broken, the glass fragments remain integral, adhering to the composite interlayer, to preserve the building envelope.

With impact products rated up to Design Performance 70, Loewen’s superior design is able to withstand 9,000 cycles of positive and negative wind loading, 105 psf structural loading and the impact of a D-Missile*.

**D-Missile certified products are tested to withstand impact from a 9 pound 2 x 4 stud, 8 feet in length, at an impact speed of 50 feet/second. Products are then tested to withstand 9,000 positive and negative wind loading cycles without failure.*

Laminated Glass

All Loewen StormForce products use industry leading laminated glass produced by bonding composite layers between two panes of glass into a single sheet.



Salt Architecture | Dan Cutrona Photography

Information subject to change without notice.

Distributed by Loewen Inc. in the USA and C.P. Loewen Enterprises Ltd. in Canada and internationally. Trade Marks owned by C.P. Loewen Enterprises Ltd. Used under license.
© C.P. Loewen Enterprises Ltd. All rights reserved.

P0491A_0223

Cover: John Wingfelder Architect,
Heartland Homes, Kim Smith Photo



Loewen

LOEWEN.COM