

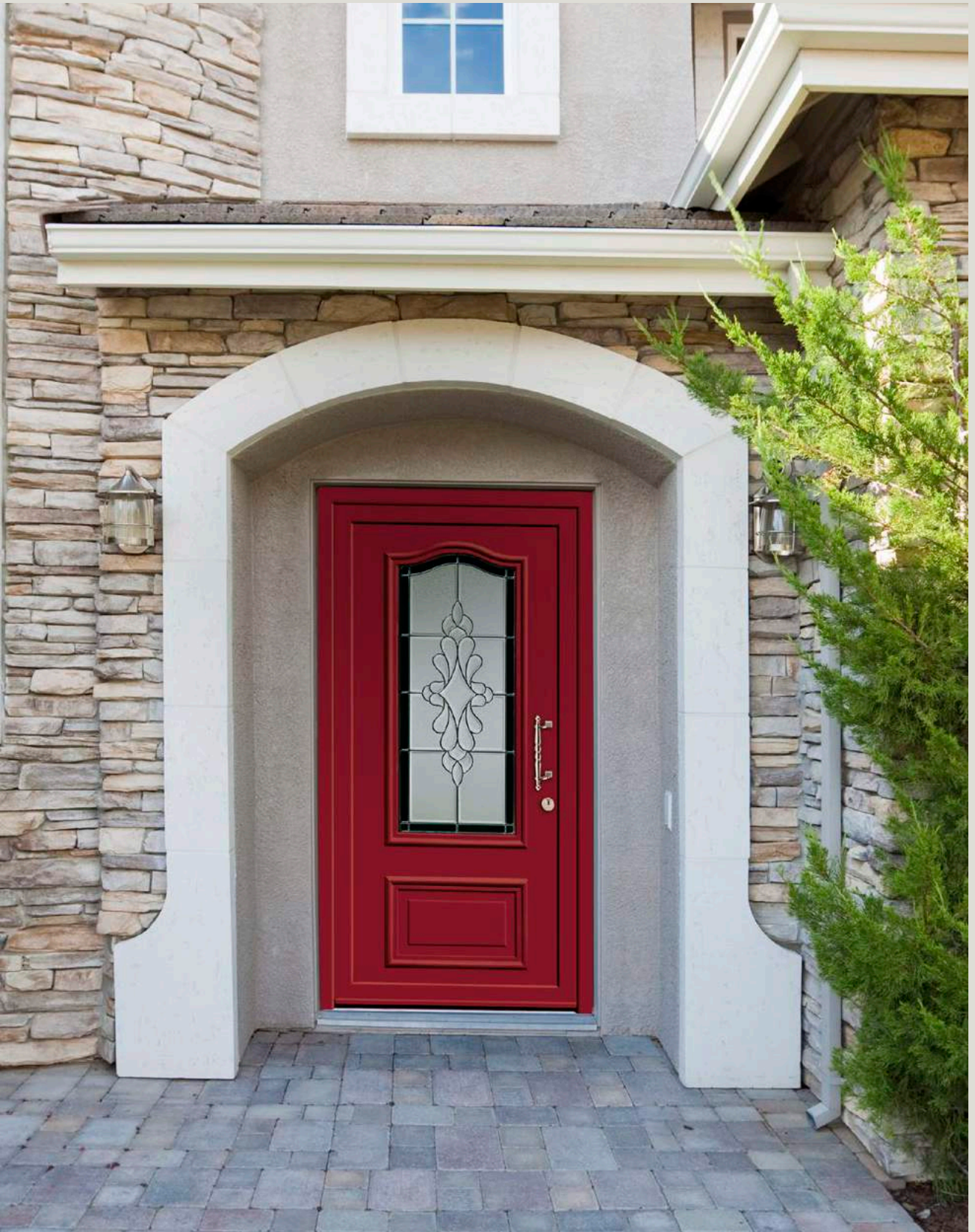
Aluminium clad wood entry doors



Aluminium clad wood entry door overview

Live the way you are – naturally individual





Type 1206

Color RAL 3004 Purple red

Content

UNILUX opening up perspectives	04
All good things come in sixes: The UNILUX brand advantages	06
Advantages of aluminium clad wood	08
UNILUX's aluminium clad wood entry doors line DESIGN	10
UNILUX's aluminium clad wood entry doors line ELEGANCE	38
UNILUX's aluminium clad wood entry doors line HISTORY	56
UNILUX's aluminium clad wood side doors	66
Freedom to choose shapes and materials	70
Glass	76
Hardware	80
Security	88
Overview	92
The reliability of a big name	94







UNILUX

One brand. One promise.

The only thing modern-day doors have in common with their “ancestors” is their name. Good carpentry work and appearance alone is no longer enough, because energy efficiency, safety, and functionality standards have increased dramatically to meet today’s customer needs.

That’s why all UNILUX aluminium clad wood entry doors are inhouse developments, demonstrating an extraordinary degree of product intelligence and complex engineering.

To ensure these masterpieces are not just available to a selected group of people, UNILUX produces them as series, enabling the unique aluminium clad wood products to be sold at prices which make top quality affordable.

UNILUX opening up perspectives.



All good things come in sixes:

The UNILUX brand advantages.

Brand advantage 1: Durability

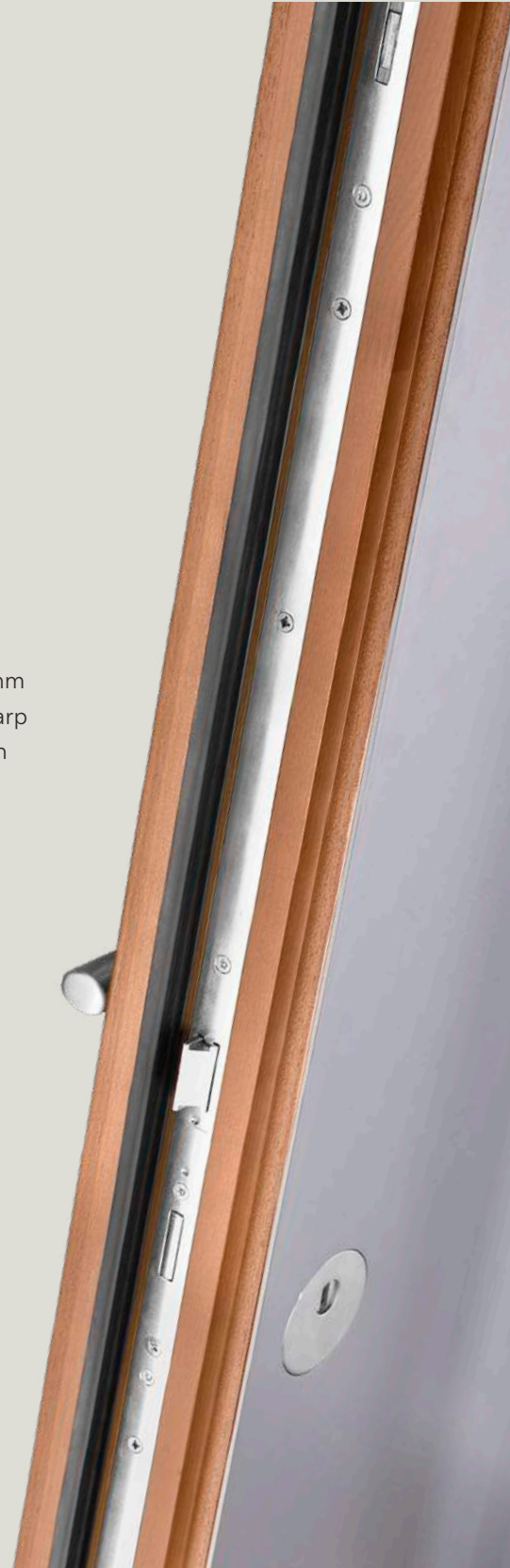
Each of our aluminium clad wood entry doors have solid panels up to 31/8"/79 mm thick. The door panels are reinforced with steel, giving them an integrated antiwarp system. The high-quality workmanship and strict quality controls ensure you gain long-term enjoyment from your UNILUX door.

Brand advantage 2: Freedom of design

Tastes are subjective. That's why you can choose from no less than 40 models. And that's just the start of it. You can design each of these models to suit your own requirements. From selection of the wood, to the color scheme (all RAL colors and special wood shades), to the glass and handle. Variety works.

Brand advantage 3: Energy efficiency

UNILUX's solid construction style not only guarantees durability, but also help save energy. Each of our aluminium clad wood entry doors has state of the art "warm-edge" spacers between the glass panes, ensuring better thermal values, greater comfort near the window, and significantly reduced condensation build-up during colder months. Each UNILUX door is also available with optional 15/8"/40 mm thick triple glazing, further reducing heating costs.





Brand advantage 4: Safety

Sometimes a front door's job is not just to keep out wind and rain, but also uninvited guests. That's why all UNILUX locking parts are made from highquality materials. Each of our aluminium clad wood entry doors also has two anti-lift devices on the hinge side and an integrated triple self-locking multi-point system as a standard.

Brand advantage 5: Service

UNILUX only works with expertly qualified specialist retailers, located across the country with their own showrooms. Your regional UNILUX retailer will offer you detailed advice and assist you with your plans. It will also ensure prompt, correct assembly, and will be available at any time if you have any service-related needs.

Brand advantage 6: Brand quality

Since 1955, UNILUX's philosophy has been: Only products of uncompromising quality must leave the factory. This saw our company become a recognised quality leader over the decades. Anyone who pays heed to the UNILUX logo can be certain of always receiving a "Made in Germany"-branded product.







Advantages of aluminium clad wood

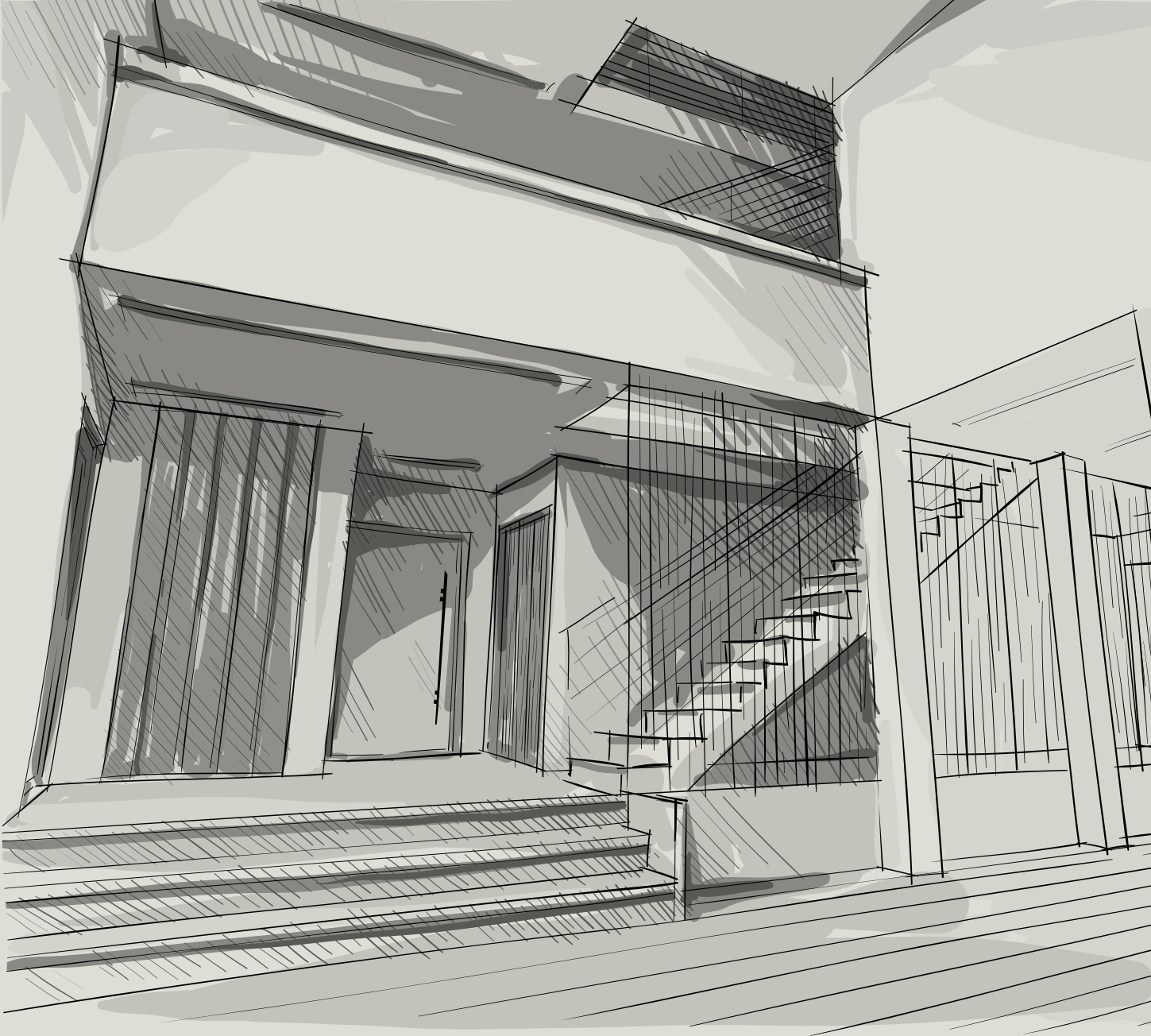
Aluminium on the outside, pure wood on the inside – combined for generations.

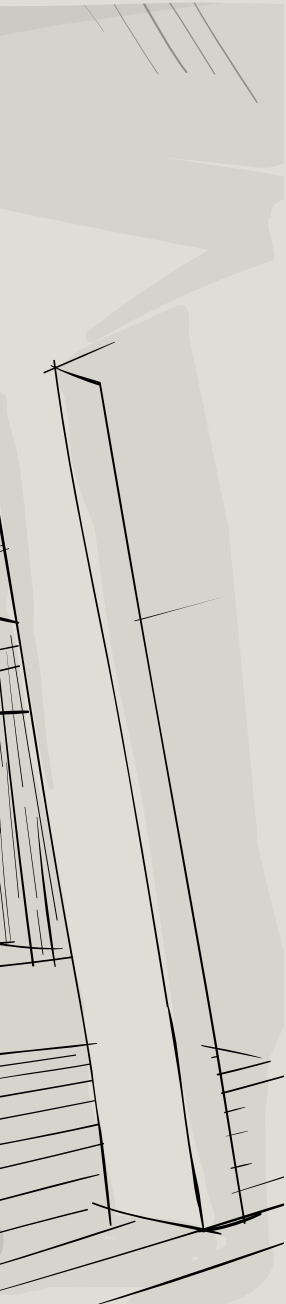
Wood creates comfort – it is a feel-good material. Aluminium, on the other hand, is robust - a protective shield against the elements. Together, they form an aluminium clad wood product which lasts generations without the need for continuous maintenance.

The wood interior does not require UV protection in the form of coloring pigments in the finish. It can be used in its natural form thanks to the aluminium cladding. The cladding firmly encases the wood, protecting it from the elements while still giving room to expand and contract and cope perfectly with temperature fluctuations.

UNILUX aluminium clad wood entry doors: The originals.







UNILUX's door line design

Trend-setting. Purist. Modern.

Perhaps the most important basic rule of a good design: Less is more. In order to be effective, forms should not be overloaded or exaggerated, because only by doing away with superfluous embellishments does the true essence of an object come clearly to the fore. A nice by-product of this is the fact that people never tire of looking at clean lines.

The DESIGN line represents contemporary style.

Uncompromising in its aesthetic demands, it is intended for sophisticated and challenging architecture.

The DESIGN line – reduced to the essential elements.





Type 1140

- 3 Light cut-outs
- satin glass
- 3 Grooves
- External handle 7043
- Protective rosette



Type 1141

- 1 Light cut-out
- satin glass
- Pilaster strips (raised)
- application slate Autumn Rustic
- External handle 7041
- Protective rosette



Type 1143

- 3 Light cut-outs
- satin glass
- Pilaster strips (raised or flush)
- application pottery Beton Silk
- External handle 7043
- Protective rosette



Type 1145

- 1 Light cut-out
- satin glass
- Pilaster strips (raised)
- application Alu Decoral
- External handle 7042
- Protective rosette



Type 1150

- without Light cut-out
- application pottery Iron Corten
- External handle 7043
- Protective rosette



Type 1142

- 3 Light cut-outs
- satin glass
- Grooves or pilaster strips (raised or flush)
- External handle 7041
- Protective rosette (optional: flush, round rosette)





Type 1148

- 1 Light cut-out
- sandblasted glass with clear stripes
- Grooves or pilaster strips (raised or flush)
- External handle 7090
- Protective rosette



Type 1146

- 1 Light cut-out
- sandblasted glass with clear stripes
- External handle 7003
- Protective rosette



Sandblasted glass with clear lettering for street name & house number



Type 1147

- 1 Light cut-out
- optionally with sandblasted glass with clear lettering for street name and house number
- Stainless steel applications
- External handel 7043
- Protective rosette



Type 1149

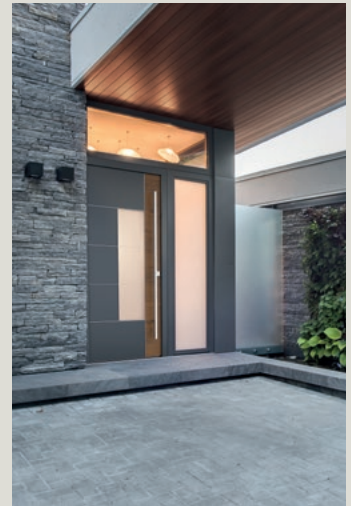
- without Light cut-out
- Stainless steel applications
- External handel 7091
- Protective rosette
- Grooves or pilaster strips (raised or flush)



Wooden optics,
ceramic or slate
applications

Type 1144

- 1 Light cut-out
- sandblasted glass with clear stripes
- Pilaster strips (raised)
- Wooden optics, ceramics or slate applications (Black Line)
- External handle 7042
- Protective rosette





Type 1100

- LivingLine aluminium cladding
- Color DB 703
- External handle 7007
- Flush protective rosette



Type 1100

- LivingLine aluminium cladding
- Color RAL 3004 Purple red
- External handle 7007
- Flush protective rosette
- Stainless-steel base



Type 1100

- LivingLine aluminium cladding
- Color RAL 5011 Steel blue
- External handle 7007
- Flush protective rosette
- Stainless-steel base



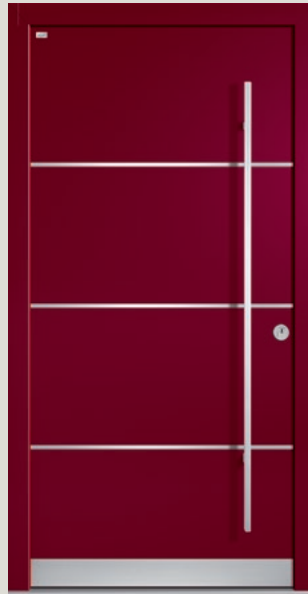
Type 1100
Internal view

- Oak wood
- Color EI 151 Dark oak
- Internal knob 2002



Type 1101

- ModernLine aluminium cladding
- Color RAL 7035 Light grey
- Flush stainless-steel pilaster strips
- External handle 7042 indented
- Protective rosette



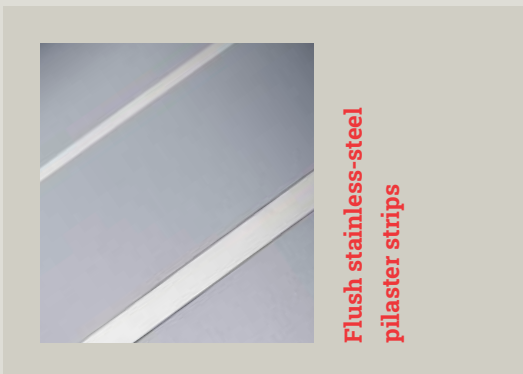
Type 1101

- ModernLine aluminium cladding
- Color RAL 3004 Purple red
- Flush stainless-steel pilaster strips
- External handle 7042 indented
- Protective rosette
- Stainless-steel base



Type 1101

- ModernLine aluminium cladding
- Color RAL 5000 Violet blue
- External handle 7042 indented
- Protective rosette



Type 1101 Internal view

- Pine wood
- Color KI 123 Red Montana
- Cross-veneer
- Internal knob 2008





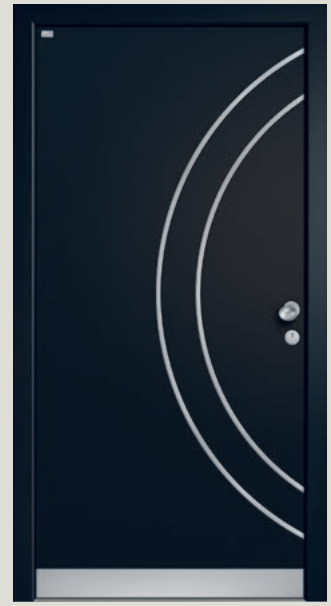
Type 1104

- LivingLine aluminium cladding
- Color RAL 9016 Traffic white
- External handle 6001
- Flush protective rosette
- Stainless-steel base



Type 1104

- LivingLine aluminium cladding
- Color RAL 7035 Light grey
- External handle 6001
- Flush protective rosette



Type 1104

- LivingLine aluminium cladding
- Color RAL 7016 Anthracite grey
- Flush stainless-steel pilaster strips
- External handle 6001
- Flush protective rosette
- Stainless-steel base



Type 1104
Internal view

- Larch wood
- Color LR 137 transparent matt
- Internal knob 2001



Type 1105

- LivingLine aluminium cladding
- Colors DB 703 and RAL 9007 Grey aluminium
- Glass 839 (sandblasting on Reflo, with bevels)
- External handle 7031
- Flush protective rosette
- Stainless-steel base



Type 1105

- LivingLine aluminium cladding
- Color RAL 7015 Slate grey
- Glass 839 (sandblasting on Reflo, with bevels)
- External handle 7031
- Flush protective rosette
- Stainless-steel base



Type 1105

- LivingLine aluminium cladding
- Colors RAL 9016 Traffic white and RAL 7040 Window grey
- Clear glass
- External handle 7031
- Flush protective rosette



Bevels as a highlight of the glass



Type 1105 **Internal view**

- Pine wood
- Color KI 146 Grey, transparent
- Glass 839 (sandblasting on Reflo, with bevels)
- Internal knob 2005





Type 1106

- ModernLine aluminium cladding
- Colors RAL 7035 Light grey and RAL 3004 Purple red
- Glass 840 (Float with sandblasting and polished notched bevel)
- External handle 7027
- Flush protective rosette
- Stainless-steel base



Type 1106

- ModernLine aluminium cladding
- Colors RAL 7016 Anthracite grey and RAL 9016 Traffic white
- Satinato glass
- External handle 7027
- Flush protective rosette



Type 1106

- ModernLine aluminium cladding
- Color DB 703
- Glass 840 (Float with sandblasting and polished notched bevel)
- External handle 7027
- Flush protective rosette



Type 1106 **Internal view**

- Larch wood
- Color LR 147 Tineo
- Glass 840 (Float with sandblasting and polished notched bevel)
- Internal knob 2013



01



02



03

[01 Type 1101

Color RAL 8003
Clay brown

[02 Type 1107

Color RAL 9016
Traffic white

[03 Type 1106

Colors RAL 7035
Light grey and
RAL 2013 Pearl orange





Type 1107

- ModernLine aluminium cladding
- Color DB 703
- Glass 842 (Sandblasting pattern on clear glass)
- External handle 7027
- Protective rosette
- Stainless-steel base



Type 1107

- ModernLine aluminium cladding
- Color RAL 7035 Light grey
- Glass 841 glass (Sandblasting pattern on clear glass)
- External handle 7027
- Protective rosette



Type 1107

- ModernLine aluminium cladding
- Color RAL 3020 Traffic red
- Clear glass
- External handle 7027
- Protective rosette



Type 1107 **Internal view**

- Pine wood
- Color KI 140 Walnut transparent II
- Glass 842 (Sandblasting pattern on clear glass)
- Internal knob 2002



Type 1109

- LivingLine aluminium cladding
- Color DB 703
- Horizontal Basic Madras glass
- External handle 7031
- Protective rosette



Type 1109

- LivingLine aluminium cladding
- Color RAL 3013 Tomato red
- Masterligne glass
- External handle 7031
- Protective rosette
- Stainless-steel base



Type 1109

- LivingLine aluminium cladding
- Color RAL 9007 Grey aluminium
- Flamme glass
- External handle 7031
- Protective rosette



Type 1109 **Internal view**

- Oak wood
- Color EI 150 Golden Oak
- Masterligne glass
- Internal knob 2006





Type 1108

- ModernLine aluminium cladding
- Color RAL 7035 Light grey
- Glass 843 (Reflo with polished notched bevel and three glass stones)
- External handle 7027
- Protective rosette



Type 1108

- LivingLine aluminium cladding
- Color RAL 3001 Signal red
- Flamme glass
- External handle 7027
- Protective rosette
- Stainless-steel base



Type 1108

- ModernLine aluminium cladding
- Color DB 703
- Glass 842 (Sandblasting pattern on clear glass)
- External handle 7027
- Protective rosette
- Stainless-steel base



Type 1108 **Internal view**

- Pine wood
- Color KI 143 Tobacco
- Glass 843 (Reflo with polished notched bevel and three glass stones)
- Internal knob 2007



Type 1110

- ModernLine aluminium cladding
- Color DB 703
- Clear glass
- External handle 7036
- Flush protective rosette
- Stainless-steel base



Type 1110

- ModernLine aluminium cladding
- Color RAL 1015 Light ivory
- Glass 844 (sandblasting on Reflo, four glass stones and ruby red panel)
- External handle 7036
- Flush protective rosette



Type 1110

- ModernLine aluminium cladding
- Color RAL 3001 Signal red
- Glass 844 (sandblasting on Reflo, four glass stones and ruby red panel)
- External handle 7036
- Flush protective rosette
- Stainless-steel base



Flush protective rosette



Type 1110 **Internal view**

- Pine wood
- Color KI 117 Beech
- Glass 844 (sandblasting on Reflo, four glass stones and ruby red panel)
- Internal knob 2007





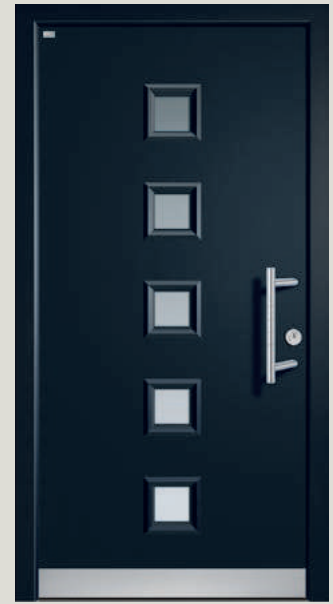
Type 1113

- LivingLine aluminium cladding
- Color RAL 9016 Traffic white
- Clear glass
- External handle 7033
- Protective rosette
- Stainless-steel base



Type 1113

- LivingLine aluminium cladding
- Colors RAL 7015 Slate grey and RAL 7035 Light grey
- Punto glass
- External handle 7033
- Protective rosette



Type 1113

- LivingLine aluminium cladding
- Color RAL 7016 Anthracite grey
- Reflo glass
- External handle 7033
- Protective rosette
- Stainless-steel base



Type 1113 **Internal view**

- Pine wood
- Color KI 137 transparent matt
- Reflo glass
- Internal knob 2001



01



02



03

[01 Type 1110
Color DB 703

[02 Type 1100
Color DB 703

[03 Type 1113
Color RAL 7016 Anthracite
grey





Type 1114

- ModernLine aluminium cladding
- Color RAL 7035 Light grey
- Clear glass
- External handle 7040
- Flush protective rosette



Type 1114

- ModernLine aluminium cladding
- Color DB 703
- Uadi glass
- External handle 7040
- Flush protective rosette
- Stainless-steel base



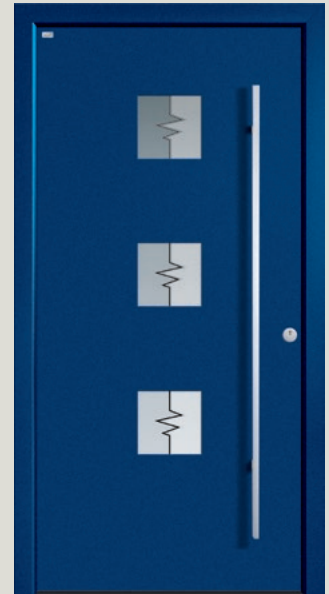
Type 1114

- ModernLine aluminium cladding
- Color RAL 5020 Ocean blue
- Punto glass
- External handle 7040
- Flush protective rosette
- Stainless-steel base



Type 1114
Internal view

- Larch wood
- Color LR 149 American Cherry
- Uadi glass
- Internal knob 2001



Type 1115

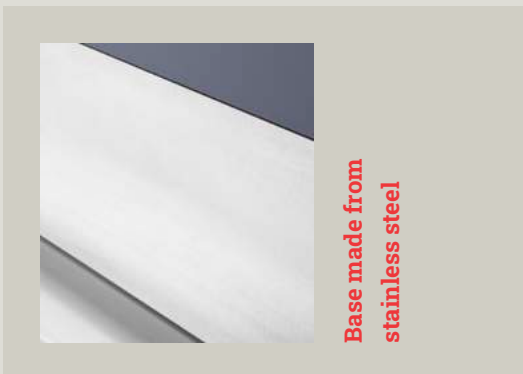
- LivingLine aluminium cladding
- Color RAL 7015 Slate grey
- Pave glass
- External handle 7018
- Flush protective rosette
- Stainless-steel base

Type 1115

- LivingLine aluminium cladding
- Color RAL 5000 Violet blue
- Glass 846 (Clear glass and sandblasting, separated by a black line)
- External handle 7018
- Flush protective rosette

Type 1115

- LivingLine aluminium cladding
- Color DB 703
- Glass 846 (Clear glass and sandblasting, separated by a black line)
- External handle 7018
- Flush protective rosette
- Stainless-steel base



Type 1115 **Internal view**

- Pine wood
- Color KI 117 Beech
- Glass 846 (Clear glass and sandblasting, separated by a black line)
- Internal knob 2002





Type 1126

- ModernLine aluminium cladding
- Color RAL 9016 Traffic white
- Glass 856 (sandblasting pattern on Float)
- External handle 7041 indented
- Flush protective rosette



Type 1126

- ModernLine aluminium cladding
- Color RAL 7016 Anthracite grey
- Thela glass
- External handle 7041 indented
- Flush protective rosette



Type 1126

- ModernLine aluminium cladding
- Colors RAL 3013 Tomato red and RAL 7016 Anthracite grey
- Glass 856 (sandblasting pattern on Float)
- External handle 7041 indented
- Flush protective rosette



Type 1126
Internal view

- Larch wood
- Color LR 140 Walnut transparent II
- Glass 856 (sandblasting pattern on Float)
- Internal knob 2007



Type 1128

- LivingLine aluminium cladding
- Colors RAL 3022 Salmon pink and RAL 7016 Anthracite grey
- Glass 857 (Sandblasting strips with rods on Reflo)
- External handle 7048
- Square protective rosette



Type 1128

- LivingLine aluminium cladding
- Color RAL 7016 Anthracite grey
- Reflo glass
- External handle 7048
- Square protective rosette
- Stainless-steel base



Type 1128

- LivingLine aluminium cladding
- Colors RAL 9016 Traffic white and RAL 7016 Anthracite grey
- Clear glass
- External handle 7048
- Square protective rosette
- Stainless-steel base



Type 1128 **Internal view**

- Larch wood
- Color LR 146 Grey, transparent
- Reflo glass
- Internal knob 2002





Type 1201

- LivingLine aluminium cladding
- Color 9007 Grey aluminium
- Glass 858 (Satinato and sandblasting on clear glass with three glass stones)
- External handle 7037
- Protective rosette



Type 1201

- LivingLine aluminium cladding
- Color RAL 7015 Slate grey
- Glass 858 (Satinato and sandblasting on clear glass with three glass stones)
- External handle 7037
- Protective rosette



Type 1201

- LivingLine aluminium cladding
- Color RAL 5020 Ocean blue
- Reflo glass
- External handle 7037
- Protective rosette



Type 1201 **Internal view**

- Pine wood
- Color KI 145 Cedar
- Glass 858 (Satinato sandblasting on clear glass with three glass stones)
- Internal knob 2007



01



02



03

[01 Type 1201
Color RAL 7015
Slate grey

[02 Type 1126
Color RAL 9016
Traffic white

[03 Type 1114
Color RAL 5020
Ocean blue





Type 1202

- LivingLine aluminium cladding
- Color RAL 3020 Traffic red
- Satinato glass
- External handle 7033
- Protective rosette



Type 1202

- LivingLine aluminium cladding
- Color DB 703
- Clear glass
- External handle 7033
- Protective rosette



Type 1202

- LivingLine aluminium cladding
- Color RAL 5000 Violet blue
- Clear glass
- External handle 7033
- Protective rosette



Type 1202
Internal view

- Oak wood
- Color EI 143 Tobacco
- Clear glass
- Internal knob 2002



Type 1112

- LivingLine aluminium cladding
- Color DB 703
- Clear glass
- External handle 7013
- Protective rosette



Type 1112

- LivingLine aluminium cladding
- Color RAL 5000 Violet blue
- Clear glass
- External handle 7013
- Protective rosette



Type 1112

- LivingLine aluminium cladding
- Color RAL 9016 Traffic white
- Clear glass
- External handle 7013
- Protective rosette



Type 1112
Internal view

- Pine wood
- Color KI 118 White, transparent
- Clear glass
- Internal knob 2005





Type 1210

- ModernLine aluminium cladding
- Color RAL 7035 Light grey
- Frosted glass with clear strips and integrated stainless-steel appliqué, red stripes RAL 3003 Ruby red
- External handle 7036
- Protective rosette



Type 1210

- ModernLine aluminium cladding
- Color RAL 9001 Cream
- Frosted glass with clear strips and integrated stainless-steel appliqué, red stripes RAL 3003 Ruby red
- External handle 7036
- Protective rosette



Type 1210

- ModernLine aluminium cladding
- Color DB 703
- Frosted glass with clear strips and integrated stainless-steel appliqué, red stripes RAL 3003 Ruby red
- External handle 7036
- Protective rosette



Type 1210 **Internal view**

- Pine wood
- Color KI 146 Grey, transparent
- Frosted glass with clear strips and integrated stainless-steel appliqué, red stripes RAL 3003 Ruby red
- Internal knob 2002



Type 1211

- ModernLine aluminium cladding
- Color DB 703
- Frosted glass with clear strips
- External handle 7037
- Protective rosette



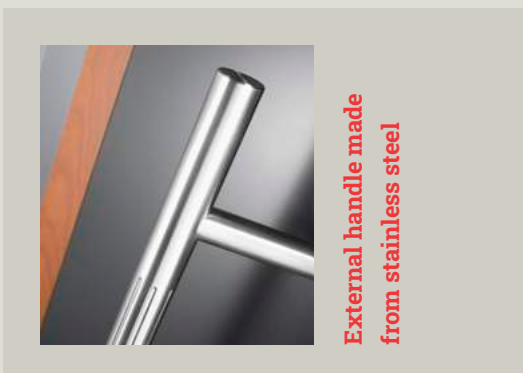
Type 1211

- ModernLine aluminium cladding
- Color RAL 9001 Cream
- Frosted glass with vertical clear strips and horizontal stainless-steel strips
- External handle 7037
- Protective rosette



Type 1211

- ModernLine aluminium cladding
- Color RAL 7035 Light grey
- Frosted glass with vertical clear strips and horizontal stainless-steel strips
- External handle 7037
- Protective rosette



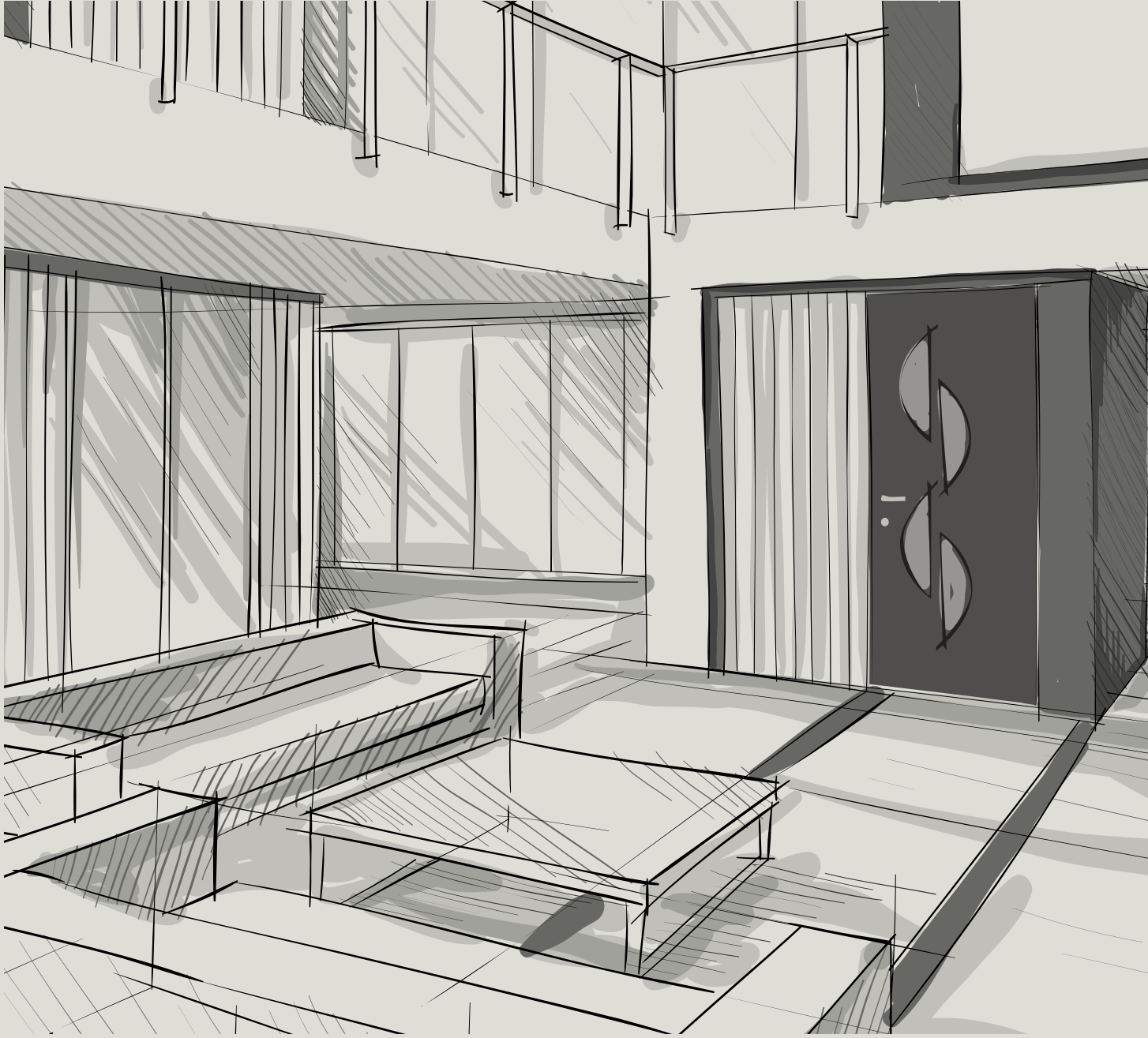
External handle made from stainless steel

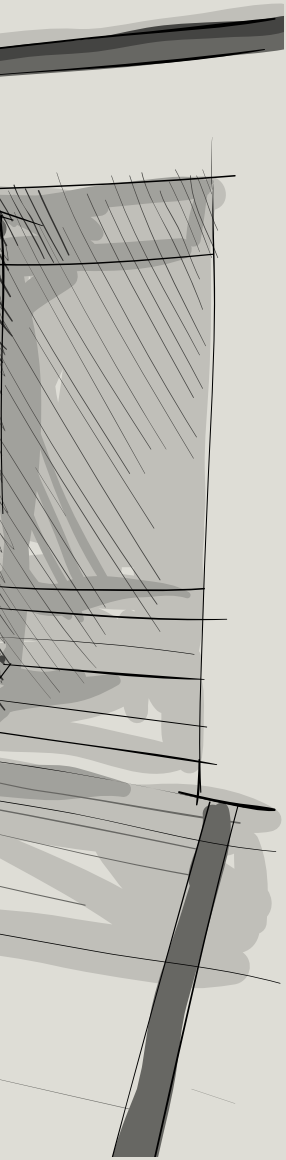


Type 1211 **Internal view**

- Pine wood
- Color KI 144 Beige grey, transparent
- Frosted glass with vertical clear strips and horizontal stainless-steel strips
- Internal knob 2003







UNILUX's door line elegance

**Personal.
Playful.
Confident.**

For a designer, a front door may just be the functional connection between inside and outside. But it's actually a lot more. It's your house's business card. The visible access point to your unique, individual home. That's why it can reflect your individuality and show the outside world who you are.

The ELEGANCE line plays masterfully with geometric shapes by combining aesthetics and dynamics and giving modern architecture a strong, individual character.

The ELEGANCE line – setting the tone.





Type 1116

- ModernLine aluminium cladding
- Color RAL 3016 Coral red
- Glass 847 (Clear glass with sandblasting and integrated glass rods)
- External handle 7044
- Flush protective rosette
- Stainless-steel base



Type 1116

- ModernLine aluminium cladding
- Color RAL 9007 Grey aluminium
- Clear glass
- External handle 7044
- Flush protective rosette



Type 1116

- ModernLine aluminium cladding
- Color RAL 1013 Oyster white
- Punto glass
- External handle 7044
- Flush protective rosette



Type 1116 **Internal view**

- Pine wood
- Color KI 101 Light oak
- Glass 847 (Clear glass with sandblasting and integrated glass rods)
- Internal knob 2013



Type 1102

- LivingLine aluminium cladding
- Color RAL 3020 Traffic red
- Flush stainless-steel pilaster strips
- External handle 7034 indented
- Protective rosette



Type 1102

- LivingLine aluminium cladding
- Colors RAL 6010 Grass green and RAL 9016 Traffic white
- External handle 7034 indented
- Protective rosette
- Stainless-steel base



Type 1102

- LivingLine aluminium cladding
- Colors RAL 3001 Signal red and RAL 7035 Light grey
- Flush stainless-steel pilaster strips
- External handle 7034 indented
- Protective rosette
- Stainless-steel base



Type 1102 **Internal view**

- Pine wood
- Color KI 137 transparent matt
- Cross-veneered
- Internal knob 2006





Type 1103

- LivingLine aluminium cladding
- Colors RAL 7047 Telegrey 4 and RAL 9016 Traffic white
- External handle 7029 indented
- Flush protective rosette



Type 1103

- LivingLine aluminium cladding
- Color DB 703
- External handle 7029 indented
- Flush protective rosette
- Stainless-steel base



Type 1103

- LivingLine aluminium cladding
- Color RAL 3001 Signal red
- Flush stainless-steel pilaster strip
- External handle 7029 indented
- Flush protective rosette



Type 1103 **Internal view**

- Larch wood
- Color LR 149 American Cherry
- Cross-veneered
- Internal knob 2006



Type 1111

- ModernLine aluminium cladding
- Colors RAL 3020 Traffic red and RAL 7015 Slate grey
- Glass 845 (Sandblasting on Reflo, one red square)
- External handle 7043 indented
- Square protective rosette
- Stainless-steel base



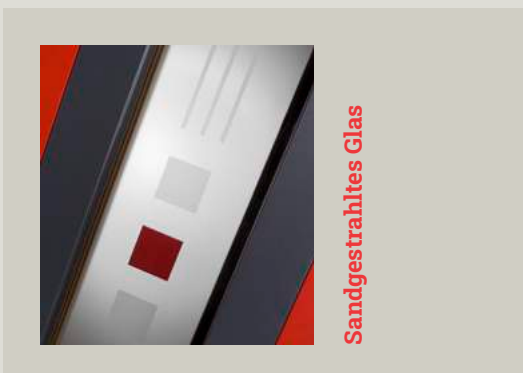
Type 1111

- ModernLine aluminium cladding
- Color RAL 7011 Iron grey
- Clear glass
- External handle 7043 indented
- Square protective rosette
- Stainless-steel base



Type 1111

- ModernLine aluminium cladding
- Colors RAL 7015 Slate grey and RAL 9016 Traffic white
- Clear glass
- External handle 7043 indented
- Square protective rosette



Type 1111 Internal view

- Pine wood
- Color KI 148 Cream, transparent
- Glass 845 (Sandblasting on Reflo, one red square)
- Internal knob 2014





Type 1117

- ModernLine aluminium cladding
- Colors RAL 7015 Slate grey and RAL 7047 Telegrey 4
- Glass 848 (Float with sandblasting, and six partly frosted glass stones)
- External handle 7048
- Flush protective rosette
- Stainless-steel base



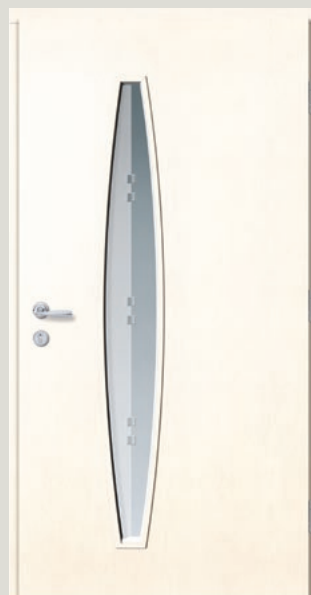
Type 1117

- ModernLine aluminium cladding
- Color DB 703
- Glass 848 (Float with sandblasting, and six partly frosted glass stones)
- External handle 7048
- Flush protective rosette
- Stainless-steel base



Type 1117

- ModernLine aluminium cladding
- Colors RAL 3005 Wine red and RAL 7035 Light grey
- Reflo glass
- External handle 7048
- Flush protective rosette



Type 1117 **Internal view**

- Pine wood
- Color KI 118 White, transparent
- Glass 848 (Float with sandblasting, and six partly frosted glass stones)
- Internal knob 2010



Type 1119

- ModernLine aluminium cladding
Color DB 703
- Glass 850 (Glass with sandblasting pattern and Swarovski stones)
- External handle 6001
- Flush protective rosette
- Stainless-steel base

Type 1119

- ModernLine aluminium cladding
- Colors RAL 5020 Ocean blue and RAL 7016 Anthracite grey
- Reflo glass
- External handle 6001
- Flush protective rosette

Type 1119

- ModernLine aluminium cladding
- Color Grey, white-pigmented
- Glass 850 (Glass with sandblasting pattern and Swarovski stones)
- External handle 6001
- Flush protective rosette



Type 1119 **Internal view**

- Larch wood
- Color LR 141 transparent matt
- Glass 850 (Glass with sandblasting pattern and Swarovski stones)
- Internal knob 2011





Type 1120

- LivingLine aluminium cladding
- Color RAL 9007 Grey aluminium
- Glass 851 (Float with sandblasting strips and three chiselled glass stones)
- External handle 7048
- Flush protective rosette



Type 1120

- LivingLine aluminium cladding
- Color RAL 9016 Traffic white
- Embedded stainless-steel pilaster strip
- Punto glass
- External handle 7048
- Flush protective rosette



Type 1120

- LivingLine aluminium cladding
- Color RAL 3001 Signal red
- Signal red Embedded stainless-steel pilaster strip
- Punto glass
- External handle 7048
- Flush protective rosette
- Stainless-steel base



Type 1120 **Internal view**

- Pine wood
- Color KI 145 Cedar
- Punto glass
- Internal knob 2008

01



02



03



[01] **Type 1116**

Color RAL 3004
Purple red

[02] **Type 1119**

Farben RAL 5020
Ocean blue

[03] **Type 1111**

Color RAL 7011
Iron grey





Type 1118

- LivingLine aluminium cladding
- Colors RAL 7016 Anthracite grey and RAL 9016 Traffic white
- Glass 849 (Glass with sandblasting pattern and Swarovski stones)
- External handle 7040
- Flush protective rosette
- Stainless-steel base



Type 1118

- LivingLine aluminium cladding
- Colors RAL 3004 Purple red and RAL 9006 White aluminium
- Clear glass
- External handle 7040
- Flush protective rosette



Type 1118

- LivingLine aluminium cladding
- Color RAL 7040 Window grey
- Reflo glass
- External handle 7040
- Flush protective rosette
- Stainless-steel base



Type 1118 **Internal view**

- Pine wood
- Color KI 137 transparent matt
- Reflo glass
- Internal knob 2002



Type 1121

- LivingLine aluminium cladding
- Colors RAL 9002 Grey white and RAL 7037 Dusty grey
- Clear glass
- External handle 6001
- Flush protective rosette
- Stainless-steel base

Type 1121

- LivingLine aluminium cladding
- Colors RAL 1013 Oyster white and RAL 7015 Slate grey
- Glass 852 (Sandblasting strips on Reflo and three chiselled stones)
- External handle 6001
- Flush protective rosette
- Stainless-steel base

Type 1121

- LivingLine aluminium cladding
- Color RAL 1013 Oyster white
- Glass 852 (Sandblasting strips on Reflo and three chiselled stones)
- External handle 6001
- Flush protective rosette



Type 1121
Internal view

- Larch wood
- Color LR 137 transparent matt
- Glass 852 (Sandblasting strips on Reflo and three chiselled stones)
- Internal knob 2010



Chiselled stones as a highlight of the glass





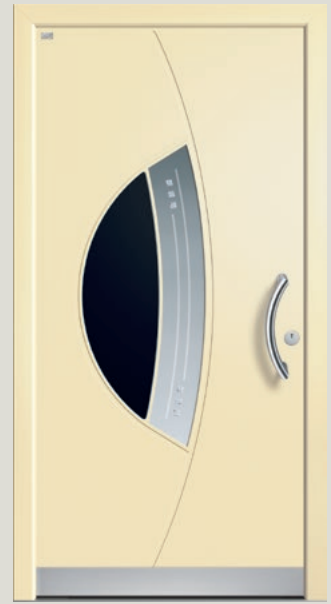
Type 1122

- LivingLine aluminium cladding
- Color DB 703
- Glass 853 (Reflo with sandblasting strips and six chiselled glass stones)
- External handle 7024
- Flush protective rosette
- Stainless-steel base



Type 1122

- LivingLine aluminium cladding
- Color RAL 7044 Silk grey
- Clear glass
- External handle 7024
- Flush protective rosette



Type 1122

- LivingLine aluminium cladding
- Colors RAL 1015 Light ivory and RAL 7016 Anthracite grey
- Glass 853 (Reflo with sandblasting strips and six chiselled glass stones)
- External handle 7024
- Flush protective rosette
- Stainless-steel base



Type 1122 **Internal view**

- Larch wood
- Color LR 144 Beige grey, transparent
- Glass 853 (Reflo with sandblasting strips and six chiselled glass stones)
- Internal knob 2001



Type 1123

- LivingLine aluminium cladding
- Colors RAL 7015 Slate grey and RAL 9016 Traffic white
- Reflo glass
- External handle 7034
- Flush protective rosette



Type 1123

- LivingLine aluminium cladding
- Colors RAL 3020 Traffic red and RAL 7015 Slate grey
- Reflo glass
- External handle 7034
- Flush protective rosette
- Stainless-steel base



Type 1123

- LivingLine aluminium cladding
- Color RAL 7011 Iron grey
- Glass 854 (Sandblasting strips on Reflo and two glass stones)
- External handle 7034
- Flush protective rosette
- Stainless-steel base



Type 1123 **Internal view**

- Pine wood
- Color KI 141 Mahagoni II
- Cross-veneered
- Glass 854 (Sandblasting strips on Reflo and two glass stones)
- Internal knob 2012





Type 1124

- LivingLine aluminium cladding
- Color RAL 7016 Anthracite grey
- Glass 855 (Reflo with sandblasting pattern and three glass stones)
- External handle 7029
- Flush protective rosette



Type 1124

- LivingLine aluminium cladding
- Colors RAL 3004 Purple red and RAL 9016 Traffic white
- Flush stainless-steel pilaster strips
- Lava glass
- External handle 7029
- Flush protective rosette
- Stainless-steel base



Type 1124

- LivingLine aluminium cladding
- Colors RAL 7016 Anthracite grey and RAL 7035 Light grey
- Glass 855 (Reflo with sandblasting pattern and three glass stones)
- External handle 7029
- Flush protective rosette



Type 1124 **Internal view**

- Larch wood
- Color LR 142 Jatoba
- Glass 855 (Reflo with sandblasting pattern and three glass stones)
- Internal knob 2008



Type 1127

- ModernLine aluminium cladding
- Colors RAL 7015 Slate grey and RAL 9001 Cream
- Punto glass
- External handle 7043
- Square protective rosette



Type 1127

- ModernLine aluminium cladding
- Colors RAL 3005 Wine red, RAL 7015 Slate grey, RAL 9016 Traffic white, stainless steel
- Clear glass
- External handle 7043
- Square protective rosette



Type 1127

- ModernLine aluminium cladding
- Color RAL 3004 Purple red
- Clear glass
- External handle 7043
- Square protective rosette



Type 1127 **Internal view**

- Eucalyptus Grandis
- Color ME 111 Antique white
- Clear glass
- Internal knob 2014





Type 1125

- LivingLine aluminium cladding
- Color RAL 5000 Violet blue
- Flush stainless-steel pilaster strips
- Satinato glass
- External handle 7029 indented
- Flush protective rosette



Type 1125

- LivingLine aluminium cladding
- Color DB 703
- Flush stainless-steel pilaster strips
- Flutes blank matt glass horizontal
- External handle 7029 indented
- Flush protective rosette
- Stainless-steel base



Type 1125

- LivingLine aluminium cladding
- Color RAL 3004 Purple red
- Punto glass
- External handle 7029 indented
- Flush protective rosette
- Stainless-steel base



Type 1125 **Internal view**

- Larch wood
- Color LR 144 Beige grey, transparent
- Punto glass
- Internal knob 2006



01



02



03

[01 Type 1127

Color RAL 3004 Purple red

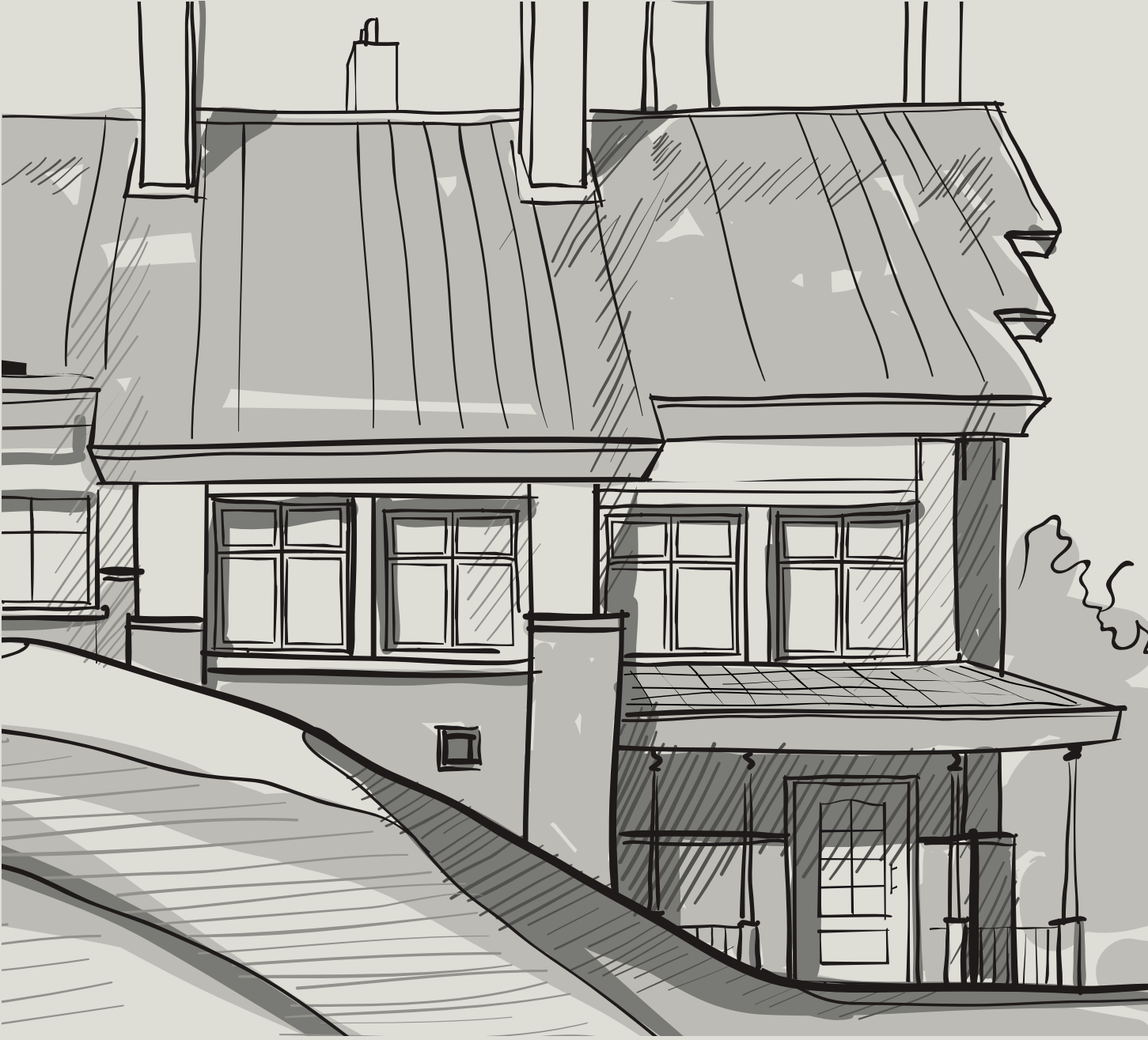
[02 Type 1122

Color DB 703

[03 Type 1123

Colors RAL 7015 Slate grey and
RAL 9016 Traffic white





UNILUX's door line history

Classic. Balanced. Clear.

There are shapes and colours which transcend fashions. Designs which have proven their worth over decades or even centuries and will continue to do this into the future.

The HISTORY line stands for a style which blends harmoniously into the overall look. It is intended for renovated older houses, and for tradition-conscious architecture.

The HISTORY line – As good as before.





Type 1203

- LivingLine aluminium cladding
- Color RAL 7015 Slate grey
- Punto glass
- External handle 7039
- Protective rosette



Type 1203

- LivingLine aluminium cladding
- Color RAL 3004 Purple red and stainless steel
- Vertical Basis Madras glass
- External handle 7039
- Protective rosette



Type 1203

- LivingLine aluminium cladding
- Color RAL 5000 Violet blue and stainless steel
- Reflo glass
- External handle 7039
- Protective rosette



Type 1203 **Internal view**

- Larch wood
- Color LR 143 Tobacco
- Reflo glass
- Internal knob 2002



Type 1204

- LivingLine aluminium cladding
- Color RAL 1015 Light ivory
- Reflo glass
- External handle 5000 with cylinder cover



Type 1204

- LivingLine aluminium cladding
- Color RAL 9016 Traffic white
- White Gothic glass
- External handle 5000 with cylinder cover



Type 1204

- LivingLine aluminium cladding
- Color RAL 7016 Anthracite grey
- White Gothic glass
- External handle 5000 with cylinder cover



Type 1204 **Internal view**

- Pine wood
- Color KI 147 Tineo
- White Gothic glass
- Internal knob 2200





Type 1205

- LivingLine aluminium cladding
- Color RAL 3005 Wine red
- White Gothic glass
- External handle 500 with cylinder cover



Type 1205

- LivingLine aluminium cladding
- Color Green, white-pigmented
- White Gothic glass
- External handle 5000 with cylinder cover



Type 1205

- LivingLine aluminium cladding
- Color RAL 7016 Anthracite grey
- White Gothic glass
- External handle 5000 with cylinder cover



Type 1205
Internal view

- Oak wood
- Color EI 150 Golden Oak
- White Gothic glass
- Internal knob 2200



Type 1206

- LivingLine aluminium cladding
- Color RAL 3004 Purple red
- Glass FG160 (Lead glass with black frame)
- External handle 7001
- Protective rosette



Type 1206

- LivingLine aluminium cladding
- Color RAL 7015 Slate grey
- White Gothic glass
- External handle 7001
- Protective rosette



Type 1206

- LivingLine aluminium cladding
- Color RAL 9016 Traffic white
- Glass FG160 (Lead glass with black frame)
- External handle 7001
- Protective rosette

Note

Glass with glazing bars, if no glass FG160 is selected!



Type 1206 **Internal view**

- Pine wood
- Color KI 118 White, transparent
- Glass FG160 (Lead glass with black frame)
- Internal knob 2204 (Polished brass)





Type 1207

- LivingLine aluminium cladding
- Color RAL 7015 Slate grey
- Uadi glass
- External handle 7001
- Protective rosette



Type 1207

- LivingLine aluminium cladding
- Color RAL 3004 Purple red
- Clear glass
- External handle 7001
- Protective rosette



Type 1207

- LivingLine aluminium cladding
- Color Green, white-pigmented
- Uadi glass
- External handle 7001
- Protective rosette



Type 1207 **Internal view**

- Eucalyptus Grandis
- Color ME 140 Walnut, transparent II
- Uadi glass
- Internal knob 2204 (Polished brass)



Type 1208

- LivingLine aluminium cladding
- Color RAL 9001 Cream
- White Gothic glass
- External handle 7001
- Protective rosette



Type 1208

- LivingLine aluminium cladding
- Color RAL 3004 Purple red
- White Gothic glass
- External handle 7001
- Protective rosette



Type 1208

- LivingLine aluminium cladding
- Color Grey, white-pigmented
- Baroque glass
- External handle 7001
- Protective rosette



Type 1208 **Internal view**

- Oak wood
- Color El 137 transparent matt
- White Gothic glass
- Internal knob 2204 (Polished brass)





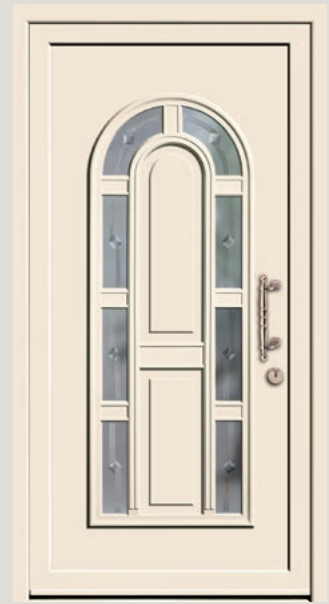
Type 1209

- LivingLine aluminium cladding
- Color RAL 5004 Black blue
- Glass FG605 (Faceted stones on Satinato)
- External handle 7001
- Protective rosette



Type 1209

- LivingLine aluminium cladding
- Color RAL 7038 Agate grey
- Glass FG605 (Faceted stones on Satinato)
- External handle 7001
- Protective rosette



Type 1209

- LivingLine aluminium cladding
- Color RAL 9001 Cream
- Glass FG605 (Faceted stones on Satinato)
- External handle 7001
- Protective rosette



Type 1209 **Internal view**

- Eucalyptus Grandis
- Color ME 141 Mahagoni II
- Glass FG605 (Faceted stones on Satinato)
- Internal knob 2204 (Polished brass)



01



02

03



[01] **Type 1208**
Color RAL 1013
Oyster white

[03] **Type 1205**
Color Green
white-pigmented

[02] **Type 1206**
Color RAL 9016
Traffic white







UNILUX side doors

**Versatile.
Attractive.
Reliable.**

No compromises. For its side doors, UNILUX uses the same strict requirements as it does for its aluminium clad wood entry doors. That's why these doors are attractive not only visually, but also from a quality standpoint.

Get a picture of them: Processing and material are at the same high level you expect from a UNILUX aluminium clad wood entry door. That lets our side doors to blend harmoniously into the overall construction in every way.

Quality throughout – UNILUX side doors.



As pretty as they are rock-solid.

They look great, and they last. The models in the UNILUX side door series are individual works of art that – matching your architecture – set esthetic accents.

And for the long term, too. High-quality materials and accurate machining are your guarantee that you'll enjoy your UNILUX side door for years to come.



Recommendation Combination plate with glass

- Color RAL 6009 fir green
- Flutes blank matt glass vertical
- External handle 4004
- Inside: Wood: pine
- Color tone KI 147 Tineo

Recommendation Complete with plate

- Color RAL 7015 slate gray
- External handle 4005
- Inside: Wood type oak
- Color tone EI 137 transparent matt





Aluminium clad wood side door handles

The handles for aluminium clad wood side doors are available in white, brown, silver, and steel colors.



Recommendation Combination plate with glass

- Color DB 703
- Punto glass
- External handle 4005
- Inside: Wood Pine
- Color tone KI 145 Cedar

Recommendation Combination plate, glass, muntins

- Color RAL 9016 traffic white
- Clear glass
- External handle 4004
- Inside: Wood type oak
- Color tone EI 150 Golden Oak







Just the way you are

Customised freedom of design.

How many different tastes are there?

Around 2 million when it comes to models, colors and woods for aluminium clad wood entry doors. Because that's how many combination options you have for your individual UNILUX product.

See which wood goes best with which color, and which décor matches the aluminium cladding.

That way, you'll find a front door which is not just "half-decent", but rather perfectly suited to your taste. An individual piece distinct from millions of other doors.

That's how UNILUX offers individuality works.

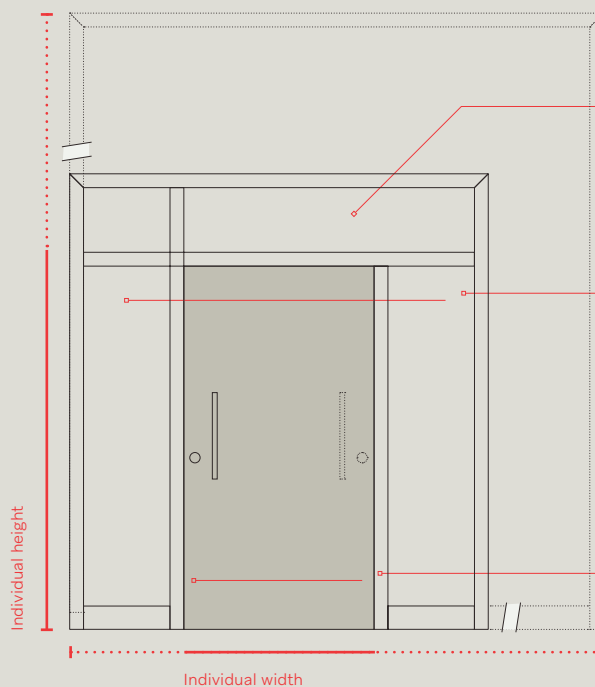


Freedom of choice in size and shape.

Fits like a glove

How big should a front door be? Which way should it open? Is it better to have one or two panels? And how much daylight should the door let in? These are questions each person will answer differently.

That's why UNILUX not only offers you customised front doors with your requested lengths and width, but also with the options of your choice. For example, with one or two side panels and transom windows. Elements which accentuate your door and add extra design features.



Transom windows

For particularly high elements and more light

Side panels

For particularly wide front door systems:

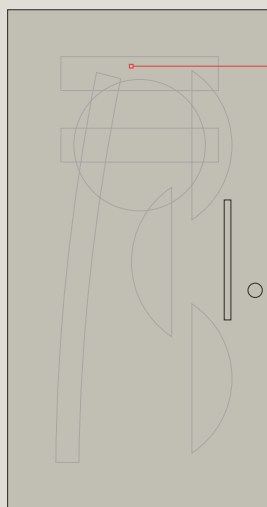
One or two side panels for more light.

Door hinge

Choose the opening side

Let there be light

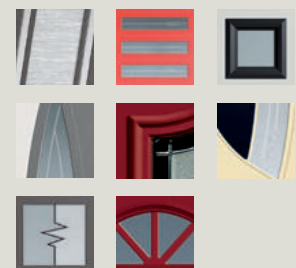
Entry halls don't have to be pitch-dark. Cut-out sections in the front door, glass side panels and transom windows brighten up hallways without the need for light bulbs, making your entrance area cosier. Light supplied for free by nature.



Cut-out sections

Square or porthole? Symmetrical fields or bold curves? As with all its other features, UNILUX also offers a multitude of cut-out options to choose from.

Variety for more individuality.





Chic in a shell

You can even tailor the aluminium cladding to suit your design. Choose from the subtly rounded LivingLine or the purist ModernLine. In over 2,100 colors, or even multi-colored.

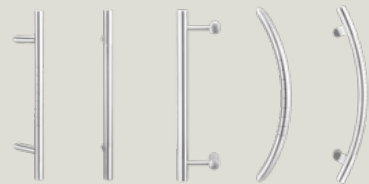
More than just light

Not all glass is the same. Just think how varied this familiar material can be. From simple ornamental glass to striking designer glass.



Getting a grip on design

Sweeping brass or straight-lined stainless steel? Historically classic or minimalistically modern? Each UNILUX handle is not only a solid piece of handcraft, but also an aesthetic gem allowing you to express your taste and style.



Base

Many models also have the option of a robust, flush stainless-steel support.



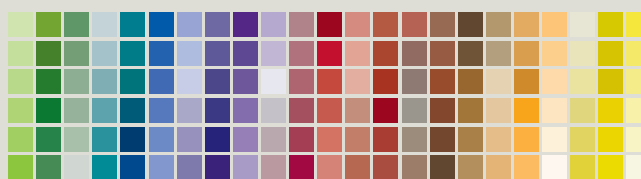
Freedom to choose materials and colors.



Exterior: Protective aluminium

Each UNILUX door not only matches your house's architecture, but also its color scheme. Because you can choose from no less than 2,132 colors and shades: RAL colors, NCS colors, DB colors / Eloxal colors, white-pigmented colors and wood effects.

Ask your UNILUX specialty retailer for the color guides, so you can be sure your door is made in your favourite red (or favourite grey or favourite blue etc.).



Interior: Cosy wood

Individuality not just on the exterior: You can choose from 4 wood types (oak, pine, larch and eucalyptus grandis), 23 glazes (transparent or semitransparent), and around 200 solid RAL colors to design the interior side of your UNILUX door. Ensuring your front door blends harmoniously into the rest of your interior décor.



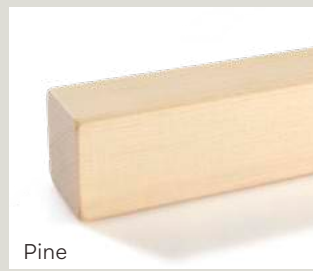
Choose from the following wood types: Pine, oak, larch and eucalyptus grandis, as well as from 23 transparent or semi-transparent finishes.



Eucalyptus grandis



Larch

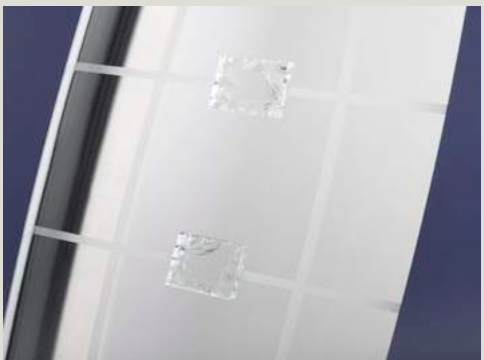
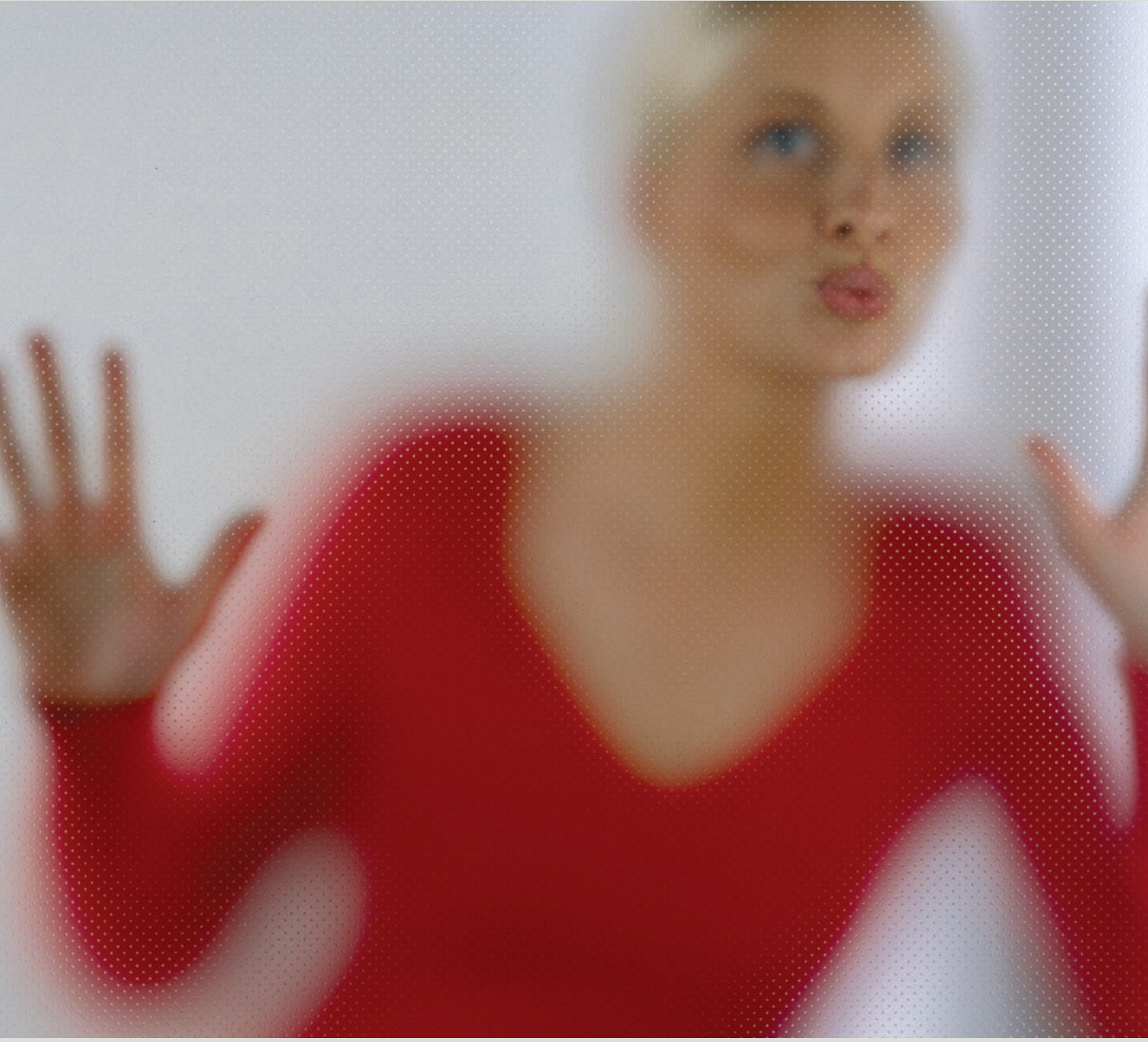


Pine



Oak







Crystal-clear style

Glass and glass varieties.

Glass is a special material which gives every door its own individual character. We offer an extensive variety of frontdoor glass types – as well as personalised design suggestions for each door, allowing you to create your very own style even when selecting the glass.

UNILUX glass impresses customers because it lets natural light in, but prevents outsiders from seeing in. Each of our ornamental and design glass products is proof that beauty and function don't have to be polar opposites.

UNILUX – Glass can be so unique.

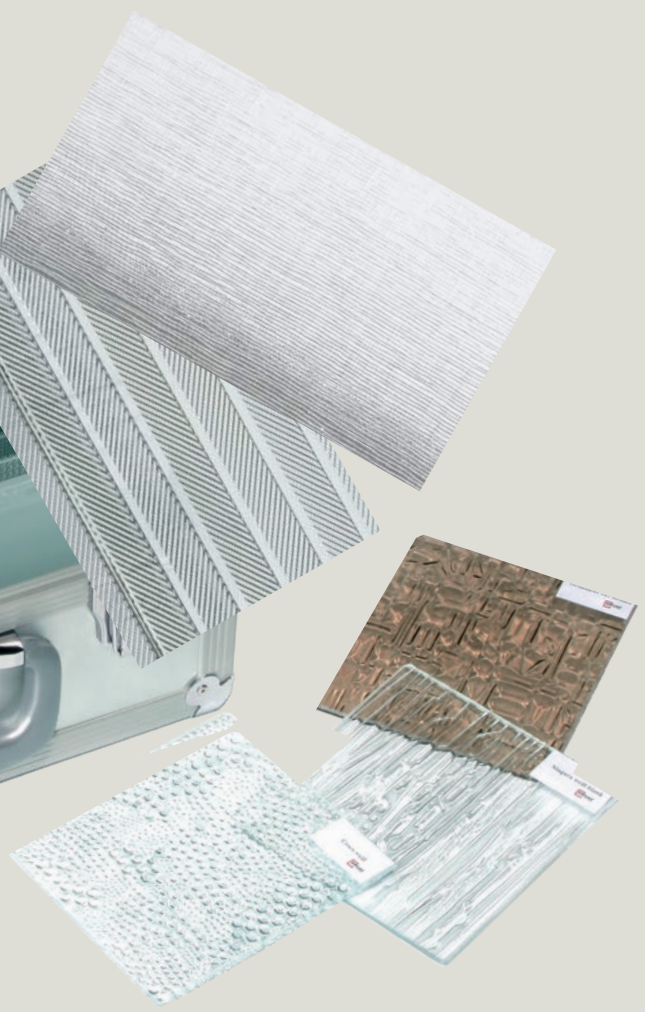


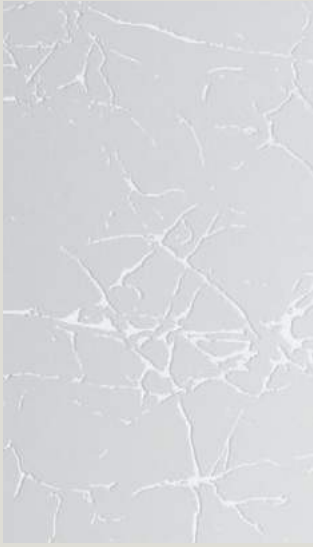


Temptation alert!

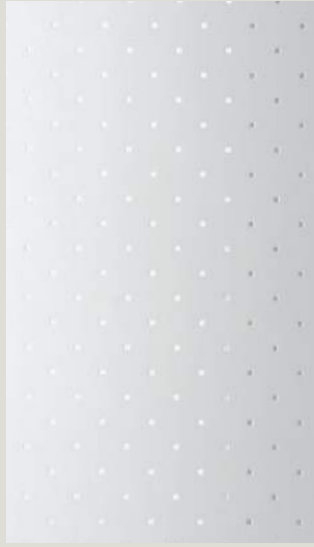
This sample case could cause a commotion. Because it shows you what's possible when it comes to glass. It doesn't always have to "just be smooth". Ornamental and design glass add structure and oomph to a familiar material.

Ask your UNILUX specialty retailer in person. They'll gladly open the UNILUX glass sample case for you.





Uadi white



Pave matt white



Punto white



Satinato







A handle on aesthetics

Hardware.

A door handle must be tough – not everyone will be treating it with kid gloves. Robustness is thus a basic requirement for a good handle. But we're not just interested in the material quality – appearance is also important to us.

A UNILUX door handle always creates an inviting feel. It complements the architecture, and is the icing on the cake for a model door.

UNILUX door handles –
nice to hold, impressive to look at.



Handle models and varieties.

Matt

7042

L 1600 mm



7043

L 500 mm



7049

L 697 mm

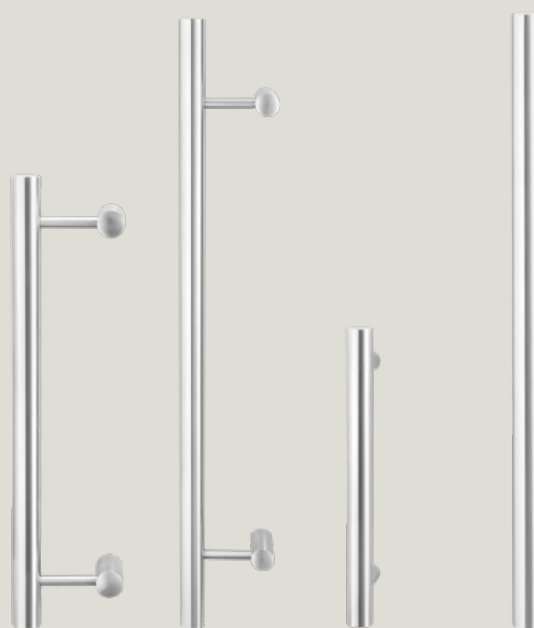


7048

L 408 mm



Glossy



7026

L 600 mm

7027

L 800 mm

7040

L 400 mm

7041

L 800 mm

Spots design

7044

L 382 mm



7045

L 600 mm



7046

L 720 mm



7029

L 800 mm



7030

L 1000 mm



7036

L 600 mm



7037

L 1200 mm



Groove design



7047

L 585 mm



7034

L 400 mm



7033

L 400 mm



7031

L 600 mm



Handle models and varieties.

7005

L 480 mm



7025

L 500 mm



7004

L 504 mm



7016

L 515 mm



7003

L 600 mm



7014

L 600 mm



7015

L 650 mm



7012

L 330 mm



7024

L 330 mm



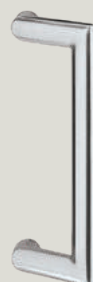
7010

L 330 mm



7011

L 330 mm



7013

L 335 mm



7022

L 400 mm



7009

L 380 mm



7008

L 2000 mm



7007

L 1800 mm



7002

L 400 mm



7017

L 325 mm



5000

Brass



5004

Brass



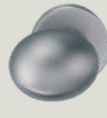
5003

Stainless steel



6000

Stainless steel



6001

Stainless steel



7001

L 300 mm



7000

L 300 mm



Handle models and varieties.



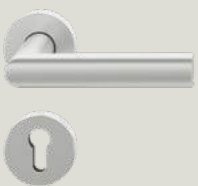
2000
Stainless steel



2000
Brass



2001
Stainless steel



2005
Stainless steel



2006
Stainless steel



2007
Stainless steel



2011
Stainless steel



2012
Stainless steel



2013
Stainless steel



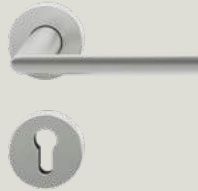
2002

Stainless steel



2003

Stainless steel



2004

Stainless steel



2008

Stainless steel



2009

Stainless steel



2010

Stainless steel



2014

Stainless steel



2200

Brass



2204

Brass







Security

Not popular among thieves.

Burglars are always pressed for time. The harder you make things for them, the quicker they give up. That's why UNILUX is not only concerned with design and comfort, but also with safety devices and locks. And this should never be compromised – a belief we take to heart in our daily work.

Good to know: Even the basic UNILUX front doors have effective safety mechanisms. We also offer additional devices which further enhance the standard safety features.

That way, UNILUX does its bit towards ensuring uninvited guests are kept out.





Solid door structure with an end-to-end lock faceplate

When it comes to security, the more you have the better. The more solid the door, the more resistant it will be to offenders. With thicknesses of up to 31/8"/79 mm, all models offer robust natural protection.

All our models have an end-to-end metal lock faceplate in the frame. This means that, since the locking mechanism is generally firmly fixed into the closing sections, the potential perpetrator would have to smash the entire plate out of the door frame – involving a lot of extra effort and significantly inhibiting the burglar.

Anti-lift device

All UNILUX front doors come with two anti-lift devices on the hinge side, significantly inhibiting force entries caused by jimmying.

Safety glass

Thanks to a specially developed, highly tear-proof polycarbonate film, the optional safety glass stays intact even if the normal glass cracks – good for you, bad for potential burglars. The UNILUX's anti-vandal P2A safety glass is incidentally certified by the German National Authority on Fire Arms and Ammunition.



Door catches

More effective and more elegant than a door chain.

The optional door catch serves as an additional interior lock, and as a safety catch when the door is easily opened, making it impossible for uninvited guests to get a foot in the door.



Invisible door hinges

Our optional door hinges ensure 100% tightness rebate entry door. And can be loaded up to 120 Kg (265 LBS). The hinges will be integrated hidden. When the door is closed, the door hinges are not visible and form a perfect unit with the front door.



Three/four-point locking devices and automatic locking

Even the standard UNILUX front doors are fitted with an effective three-point locking device with two self-locking bolts. When pulled tightly, these securely and automatically lock the door in two places – at the top and the bottom. The door can be opened normally using the handle or a key.

For more demanding systems, we offer the option of an electronic self closing device which opens your door electronically via remote control or fingerprint.





Page 12
Type 1140



Page 12
Type 1141



Page 12
Type 1143



Page 13
Type 1145



Page 13
Type 1150



Page 13
Type 1142



Page 14
Type 1148



Page 14
Type 1146



Page 14
Type 1147



Page 15
Type 1149



Page 15
Type 1144



Page 16
Type 1100



Page 17
Type 1101



Page 18
Type 1104



Page 19
Type 1105



Page 20
Type 1106



Page 22
Type 1107



Page 23
Type 1109



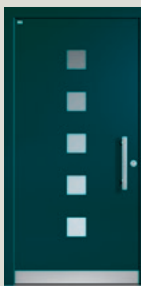
Page 24
Type 1108



Page 25
Type 1110



Page 26
Type 1113



Page 28
Type 1114



Page 29
Type 1115



Page 30
Type 1126



Page 31
Type 1128



Page 32
Type 1201



Page 34
Type 1202



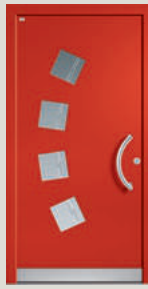
Page 35
Type 1112



Page 36
Type 1210



Page 37
Type 1211



Page 40
Type 1116



Page 41
Type 1102



Page 42
Type 1103



Page 43
Type 1111



Page 44
Type 1117



Page 45
Type 1119



Page 46
Type 1120



Page 48
Type 1118



Page 49
Type 1121



Page 50
Type 1122



Page 51
Type 1123



Page 52
Type 1124



Page 53
Type 1127



Page 54
Type 1125



Page 58
Type 1203



Page 59
Type 1204



Page 60
Type 1205



Page 61
Type 1206



Page 62
Type 1207



Page 63
Type 1208



Page 64
Type 1209



Page 68
Recommendation 1



Page 68
Recommendation 2



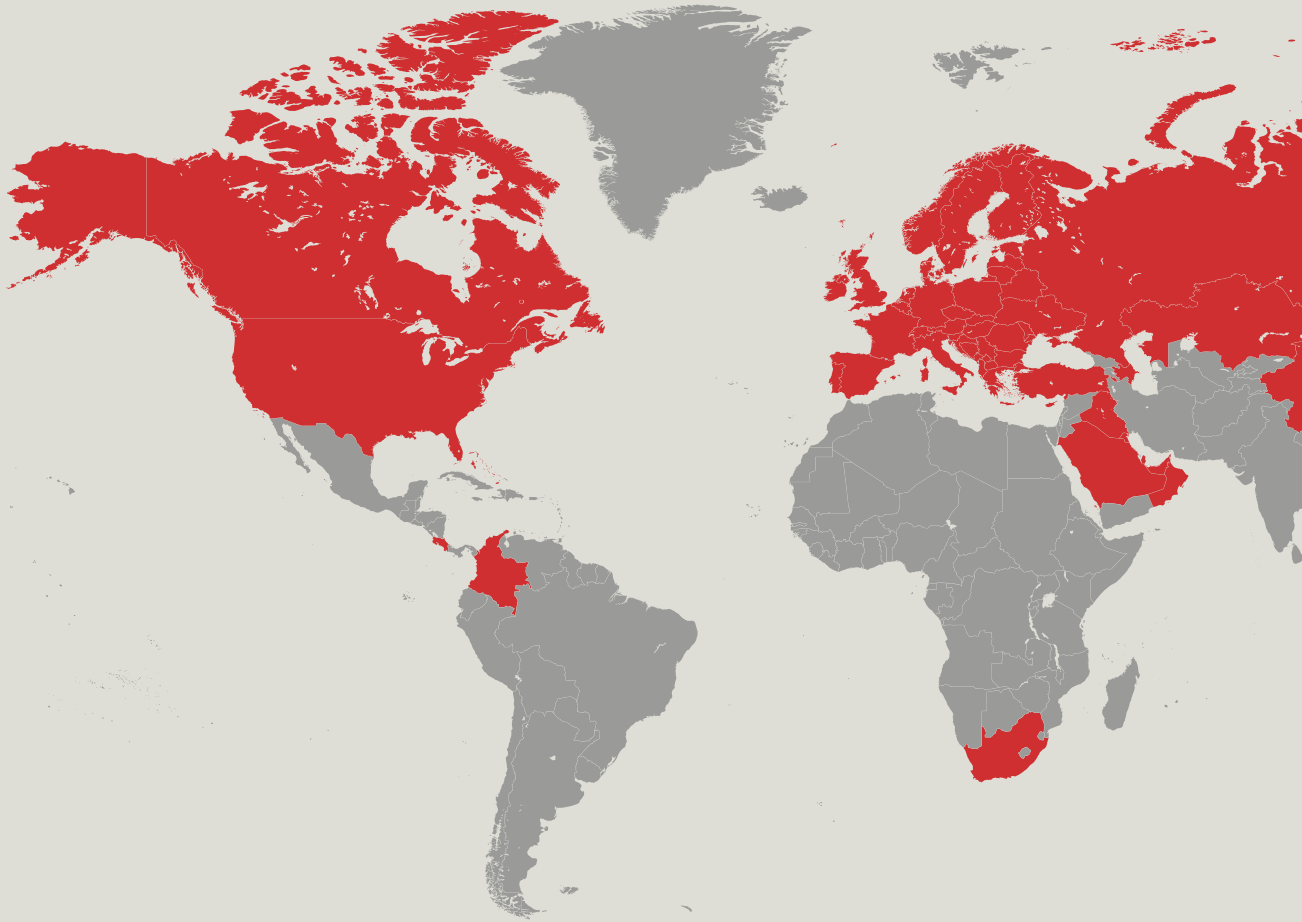
Page 69
Recommendation 3



Page 69
Recommendation 4



The reliability of a big name



UNILUX ensures award-winning long-term progress - by selecting the right partners and raw-material suppliers, and by being a member of leading institutions and associations:



UNILUX products meet international test and safety standards:





Company info

Publisher

UNILUX GmbH
54528 Salmtal / Germany
Phone +49 6578 189-0
Fax +49 6578 188-0

info@unilux.de
www.unilux.de

Notes

The content of this catalogue is not legally binding and may be subject to technical changes as part of further developments or errors in the text, images or descriptions. We only allow images and text material – including excerpts – to be used upon request, and with our express written consent.

The image material used is for illustrative purposes. Differences in colour are unfortunately unavoidable due to printing. The sample illustrations are not to scale.

© 2022, UNILUX GmbH. All rights reserved.



UNILUX headquarters, Salmtal



Contact:

Phone: +49 (0) 6578 189-0

E-Mail: info@unilux.de

Further information on products can
be found at: www.unilux.de