

Yawa | USA

**PRODUCT CHEAT SHEETS**



**BOLD AND BRILLIANT**  
WINDOWS AND DOORS

# CHEAT SHEET – SLIDING & LIFT'N'SLIDING DOORS



# SLIDING & LIFT'N'SLIDING DOORS – PARAMETERS

	MoreView	MoreView S-line	DP180 Pano Lift'N'Slide	DP180 Pano Slim mull	BI FOLD doors	ECO Slider
Air Permeability	A3	A3	A3	A3	A3	A3
Designed Pressure	LC 40 psf	LC 40 psf	CW 60 psf	CW 60 psf	LC 35 psf	LC 50 psf
Water Tightness	5 psf	5 psf	12 psf	12 psf	5 psf	7,5 psf
Acoustic Insulation	STC up to 42 dB	STC up to 42 dB	STC up to 47 dB	STC up to 42 dB	STC up to 42dB	
U value	from 0.12 Btu/hft <sup>2</sup> F	from 0.12 Btu/hft <sup>2</sup> F	From 0.12 Btu/hft <sup>2</sup> F	From 0.12 Btu/hft <sup>2</sup> F	from 0.15 Btu/hft <sup>2</sup> F	From 0.23 Btu/hft <sup>2</sup> F
Max panel weight	3300 lbs	3300 lbs	1000 lbs	1000 lbs	440 lbs	440 lbs
Max panel height	16ft	16ft	11ft	11ft	12ft	8ft
Max panel width	21ft	21ft	11ft	11ft	4ft	4ft

# SLIDING & LIFT'N'SLIDING – KEY FEATURES

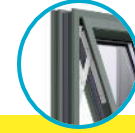
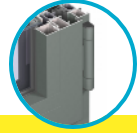
	MoreView	MoreView S-line	DP180 Pano Lift'N'Slide	DP180 Pano Slim mull	BI FOLD doors	ECO Slider
ADA threshold		✓	✓	✓		
Concealed track		✓	✓	✓		
Pocket	✓	✓	✓			
Operable corner	✓	✓	✓			
Fixed corner	✓	✓	✓			
Motorized	✓	✓	✓	✓		
SDL	✓	✓	✓	✓	✓	✓
Single track	✓	✓	✓		✓	
Double track	✓	✓	✓	✓		✓
Triple track	✓	✓	✓			✓
Multi track	✓	✓	✓			



# CHEAT SHEET - WINDOWS



# WINDOWS – OPERATION TYPES



	Visible hardware			Concealed hardware			Friction hardware				
	Inwards opened			Outwards opened			Inwards opened		Outwards opened		
	Turn or turn-tilt or tilt-turn	Bottom hung	Double window	Casement	Top hung	Double window	Turn or turn-tilt or tilt-turn	Bottom hung	Double window	Turn	Top hung
PASSIVE	✓	✓	✓				✓	✓	✓		
PERFORMANCE	✓	✓	✓	✓	✓	✓	✓	✓	✓	✓	✓
MORE VIEW	✓	✓	✓	✓	✓	✓	✓	✓	✓	✓	
INDUSTRIAL	✓	✓	✓	✓	✓	✓	✓	✓	✓	✓	✓
ECO	✓	✓	✓	✓	✓	✓	✓	✓	✓	✓	✓

# WINDOWS – PARAMETERS

	PASSIVE	PERFORMANCE	INDUSTRIAL	MOREVIEW	ECO	
Air Permeability	A3	A3	A3	A3	A3	
Designed Pressure	<b>Operable</b>	65 psf	65 psf	50 psf	40 psf	65 psf
	<b>Fixed</b>	75 psf	75 psf	65 psf	60 psf	75 psf
Water Tightness	<b>Inwards</b>	15 psf	15 psf	12 psf	9 psf	15 psf
	<b>Outwards</b>	15 psf	15 psf	15 psf	12 psf	15 psf
Acoustic Insulation	39 - 48 dB	39 - 48 dB	39 - 46 dB	39 - 44 dB	37 - 46 dB	
U value	from 0.08 Btu/hft <sup>2</sup> F	from 0.12 Btu/hft <sup>2</sup> F	from 0.13 Btu/hft <sup>2</sup> F	from 0.15 Btu/hft <sup>2</sup> F	from 0.17 Btu/hft <sup>2</sup> F	
Max fixed weight	1100lbs 500kg	1100lbs 500kg	900lbs 400kg	660 lbs 300kg	1100lbs 500kg	
Max operable panel weight	660lbs 300kg	660lbs 300kg	440lbs 200kg	330 lbs 150kg	440lbs 200kg	
Max height	10ft	10ft	10ft	9ft	8ft	
Max width	5ft	5ft	5ft	5ft	5ft	

# WINDOWS – KEY FEATURES





	PASSIVE	PERFORMANCE	INDUSTRIAL	MOREVIEW	ECO
Frame width	2 11/32" (59,4mm)	2" (52,1mm)	1 3/8" (36mm)	1 1/8" (28,5mm)	2" (52,1mm)
Frame depth	4" (102mm)	3" (77mm)	3" (77mm)	4 1/8" (104,5mm)	2 7/16" (62mm)
Fold width (frame + sash)	3 3/4" (97mm)	3 1/2" (89mm)	2 13/16" (71.4mm)	2" (50mm)	3 1/2" (89mm)
Mull width	3 5/8" (91.7mm)	3 1/32" (77mm)	2 7/64" (53.4mm)	1 3/4" (44mm)	3 1/32" (77mm)
Gaskets	5	4	5	3	4
SDL bars	✓	✓	✓	✓	✓
Glazing	Triple Quad	Double Triple	Double Triple	Double Triple	Double
Nailfin	✓	✓	✓		✓
Installation types	Brackets Through frame Nailfin	Brackets Through frame Nailfin	Brackets Through frame Nailfin	Brackets Through frame Nailfin	Brackets Through frame Nailfin
Shadow box	✓	✓	✓	✓	✓



# CHEAT SHEET - DOORS



# DOOR SYSTEMS – OPERABLE TYPES

	Visible hardware				Concealed hardware		Features	
	Standard hinges		Roller hinges		Inswing	Outswing	Sidelights/ Transoms	Lockbox
	Inswing	Outswing	Inswing	Outswing				
								
PASSIVE	✓	✓	✓	✓	✓	✓	✓	
PERFORMANCE	✓	✓	✓	✓	✓	✓	✓	
MORE VIEW			✓	✓			✓	✓
ECO	✓	✓	✓	✓	✓		✓	
INDUSTRIAL			✓	✓			✓	

# DOORS – PARAMETERS

	PASSIVE	PERFORMANCE	INDUSTRIAL	MOREVIEW	ECO
Air Permeability	A3	A3	A3	A3	A3
Designed Pressure	CW 60 psf	CW 60 psf	LC 60 psf	LC 50 psf	CW 60 psf
Water Tightness	9 psf	9 psf	9 psf	9 psf	9 psf
Acoustic Insulation	STC up to 45 dB	STC up to 44 dB	STC up to 42 dB	STC up to 42 dB	STC up to 42dB
U value	from 0.12 Btu/hft <sup>2</sup> F	from 0.15 Btu/hft <sup>2</sup> F	from 0.17 Btu/hft <sup>2</sup> F	From 0.20 Btu/hft <sup>2</sup> F	from 0.20 Btu/hft <sup>2</sup> F
Max panel weight	550 lbs	550 lbs	500 lbs	300 lbs	550 lbs
Max panel height	10ft	10ft	10ft	10ft	10ft
Max panel width	4.5ft	4.5ft	4.5ft	5ft	4,5ft

# DOORS – KEY FEATURES

	PASSIVE	PERFORMANCE	INDUSTRIAL	MOREVIEW	ECO
Frame width	2 5/8" (66,7mm)	2 5/8" (66,7mm)	> 2" (48,2mm)	1 3/8" (34,7mm)	2 5/8" (66,85mm)
Frame depth	4 1/32" (102mm)	3 " (77mm)	3" (77mm)	3 13/16" (97,5mm)	2 1/2" (62mm)
Combination width (frame + sash)	6 32/32" (154,4mm)	5 ½" (138,4mm)	4 43/64" (118,5)	4 1/16" (102,85)	5 1/2" (138mm)
ADA Threshold		✓		✓	✓
SDL bars	✓	✓	✓	✓	✓
Glazing	Triple Quad	Double Triple	Double Triple	Double Triple	Double
Nailfin					
Installation types	Brackets Through frame	Brackets Through frame	Brackets Through frame	Brackets Through frame	Brackets Through frame
Commercial hardware	✓	✓			✓

# THANK YOU

## Contact Us

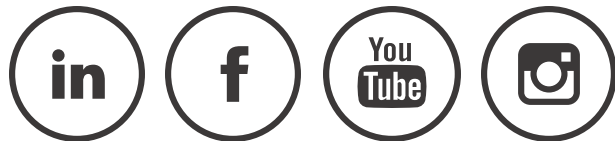
Yawal USA

11 West Hudson Avenue

Englewood, NJ 07631

T. 845-304-2396

E-Mail: [office@yawalusa.com](mailto:office@yawalusa.com)



BOLD AND BRILLIANT  
WINDOWS AND DOORS