

CORE CATALOG

2020 EDITION

Table of Contents

Index

DESCRIPTION	PAGE NO.
Turnkey Solutions	4 - 5
Aluminum Extrusion	6
Joining Plates	7
Corner Brackets	8
Corner Gussets	8
Fasteners	9
Door Accessories	10
Base Plates	11
Casters	11
Floor to Frame	12
Linear Motion	12

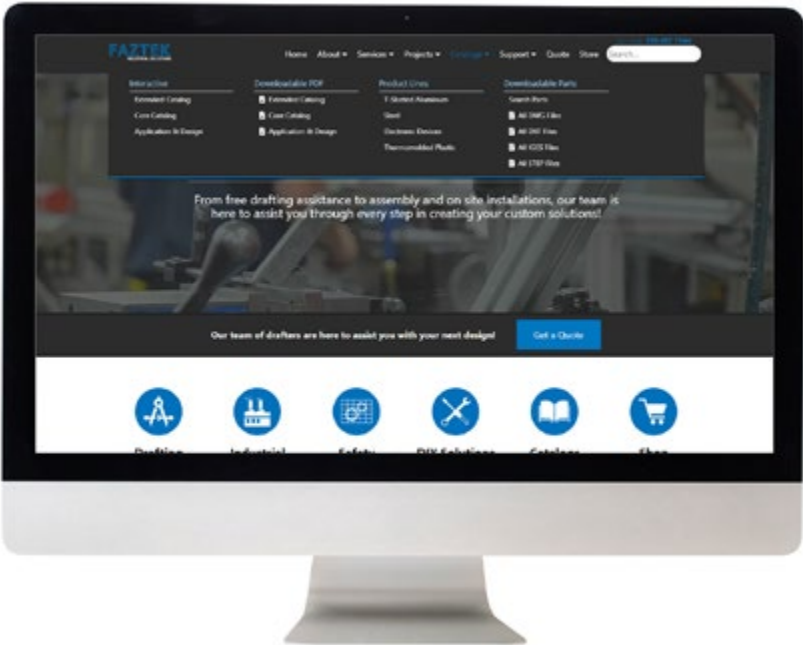
Index

DESCRIPTION	PAGE NO.
Panels & Panel Accessories	13
Assembly Tools	13
Industrial Solutions	14-15
Guarding Solutions	16-17
DIY Solutions	18-19
Electronic Devices	20
Clipless Steel	21
Thermoformed Plastics	21
Additional Solutions	22
Faztek Contact Information	23

Faztek’s Core Product Offering

- Commonly used Faztek components
- Easier product lookup capability
- Consistency between products
- Design process for most projects becomes quick and easy

If you do not see the product you are looking for in this offering, please contact Faztek or view our **Extended Faztek Product Catalog** on-line at **www.Faztek.net**



Kitted Projects

Each bar, panel, bagged hardware, etc. is marked in accordance to your 3D tagged drawing for quick and easy assembly.

- Faztek Perks
- Eliminate waste
 - Prevent overproduction
 - Reduce inventory
 - Cut space requirements
 - Avoid errors



Assembled & Sub-Assembled Projects

Sub-Assembled Projects
Our team will put together sections of your project so that when it's delivered your team simply needs to attach each section together to finish the assembly.

Fully Assembled Projects
Our team fully assembles your project inhouse and ships it to you completed, for your team to install.

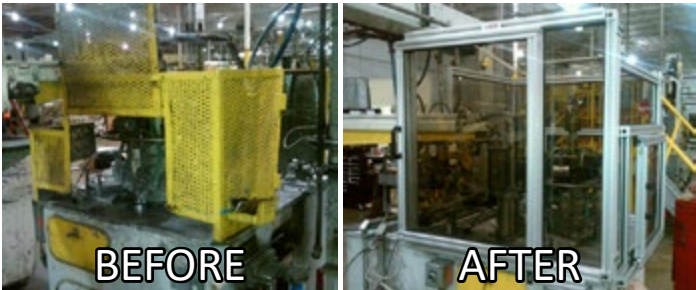
- Faztek Perks
- Redirect labor to other in-plant projects
 - Save time with Faztek's experience
 - Ensure proper assembly



On-Site Installations

Let our experienced contract assemblers ensure proper assembly of your project by installing it on-site for you.

- Faztek Perks
- Redirect labor to other in-plant projects
 - Save time with Faztek's experience
 - Ensure proper assembly



Free Design Assistance

Whether you need a simple perimeter guard or a more complicated integrated safety system, let us do the work for you. We factor in all necessary saw cuts, machining, hardware, gasket, etc... automatically into your project.

- First step send us...**
- A hand sketch with dimensions and basic details
- or
- photographs of all sides of the machine to be guarded
- or
- a detailed outline that gives the full picture of what you are looking to guard as well as your requirements.

- In 3 days or less you get back...**
- Full bill of materials (BOM) that includes all necessary saw cuts, machining, hardware, gasket, etc...
 - 3D tagged drawing
 - 3D drawing with dimensions

Your bill of materials will offer a kit form price as well as an assembled price to help you make a better decision on how to proceed with your safety guarding project.

**Our free design assistance includes up to the first 4 hours of your design quote.*

Send quote requests by e-mail to InsideSales@Faztek.net or by fax at 260.482.7354

Faztek Quick Quote App

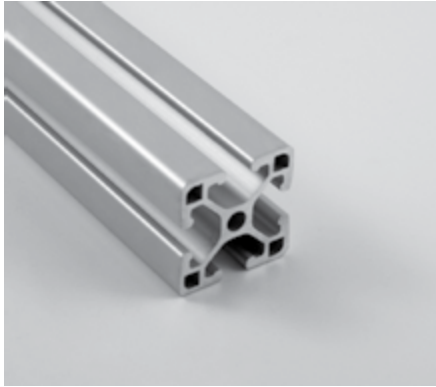
Get the FREE app & request a quote in under 15 minutes!

Quickly take photos and a short video of all sides of your machine, choose your preferred materials, tap to add doors, and receive your free quote in 3 days or less!

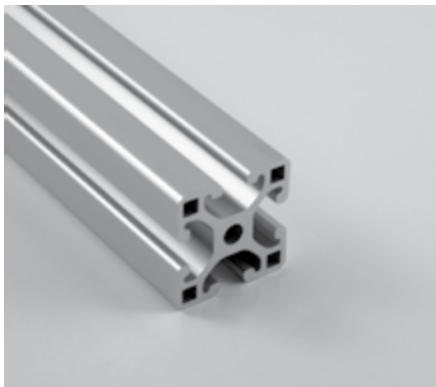


Aluminum Extrusion

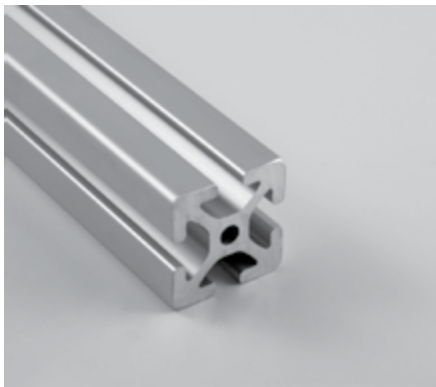
15QE1515UL
1.5" X 1.5" ULTRA-LITE - SMOOTH



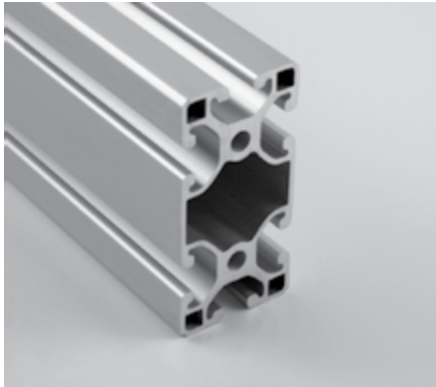
15QE1515L
1.5" X 1.5" LITE - SMOOTH



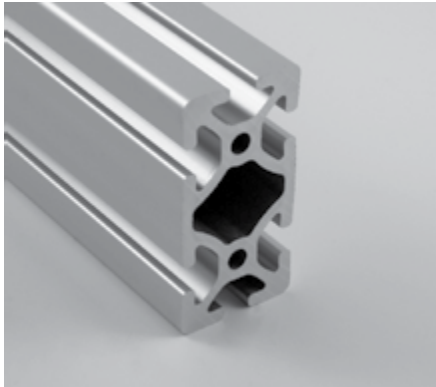
15QE1515
1.5" X 1.5" HEAVY - SMOOTH



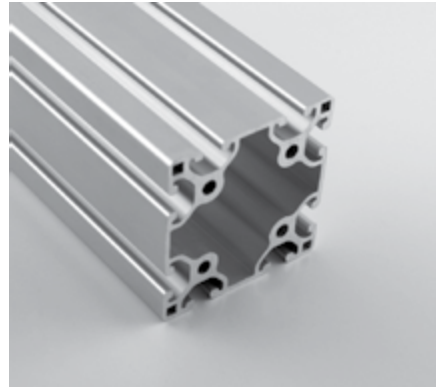
15QE1530L
1.5" X 3.0" LITE - SMOOTH



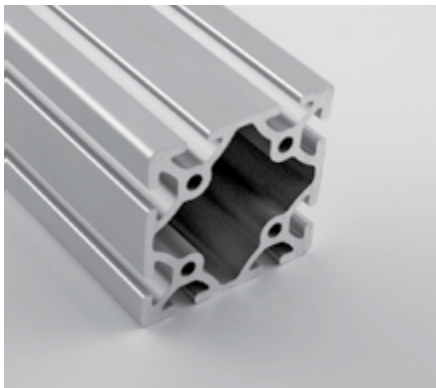
15QE1530
1.5" X 3.0" - SMOOTH



15QE3030L
3.0" X 3.0" LITE - SMOOTH



15QE3030
3.0" X 3.0" - SMOOTH



End caps

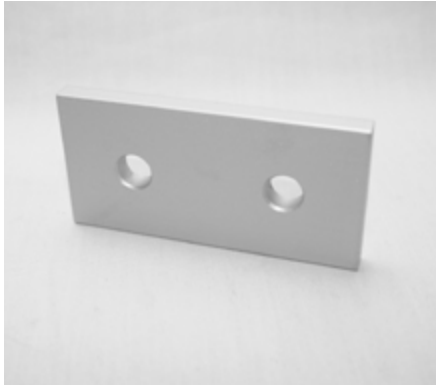


45° Support Brackets

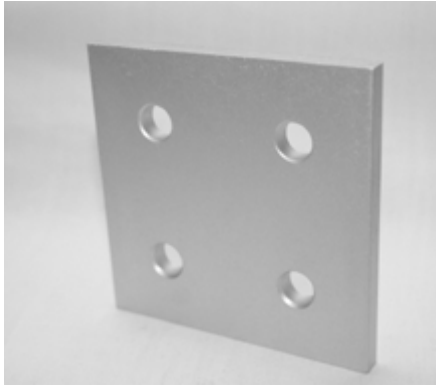


Joining Plates

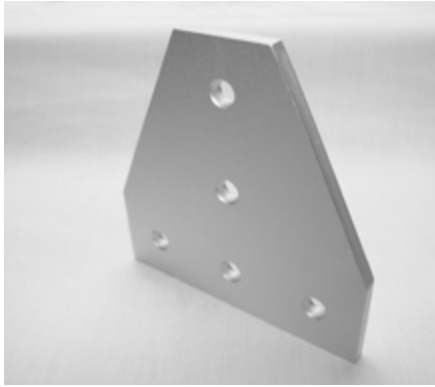
15JP4501
2 HOLE JOINING STRIP



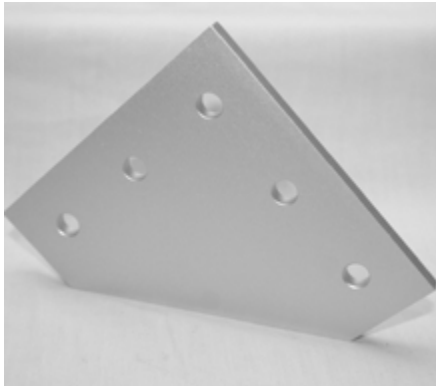
15JP4504
4 HOLE JOINING PLATE



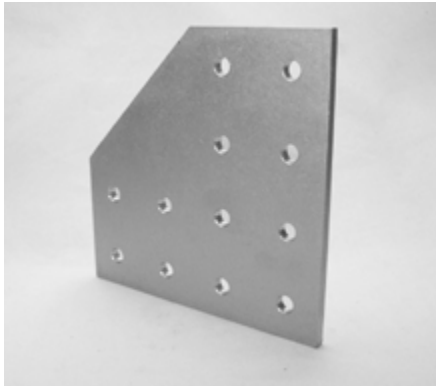
15JP4506
5 HOLE JOINING PLATE



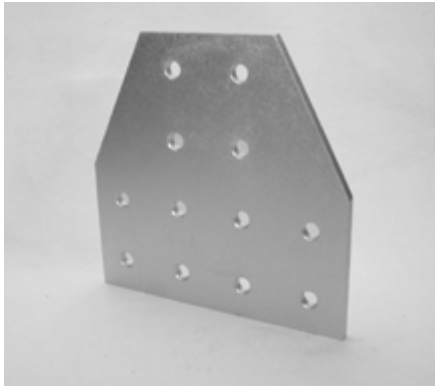
15JP4507
5 HOLE JOINING PLATE



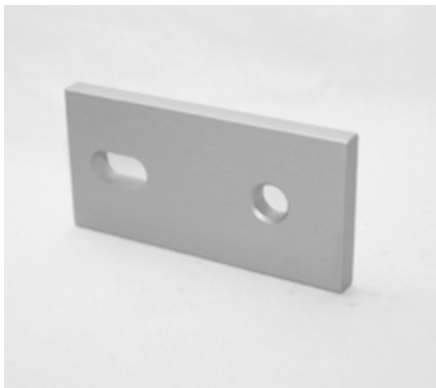
15JP4510
12 HOLE 90° JOINING PLATE



15JP4520
12 HOLE TEE JOINING PLATE



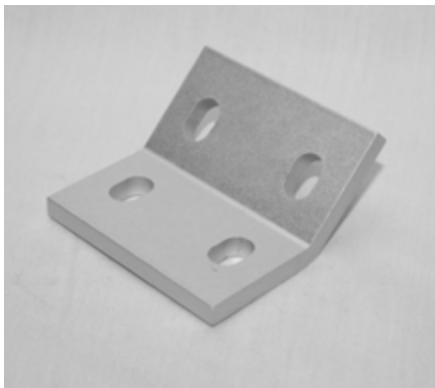
15AC7972
REMOVABLE DOOR STRAP



15CM0020
2 HOLE MITRE JOINING PLATE



15CB4870
4 HOLE 45° ANGLE BRACKET



*10 series and metric offerings available in our Extended Product catalog

*10 series and metric offerings available in our Extended Product catalog

Corner Brackets

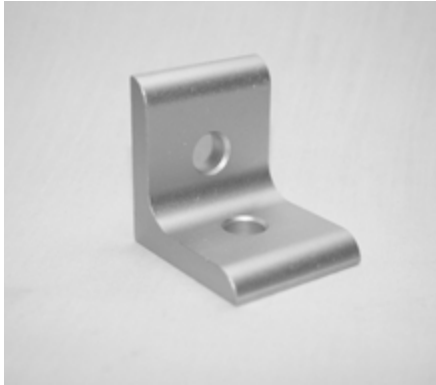
15CB4000

2 HOLE SLOTTED INSIDE CORNER BRACKET



15CB4801

2 HOLE INSIDE CORNER BRACKET



15CB4802

3 HOLE INSIDE CORNER BRACKET



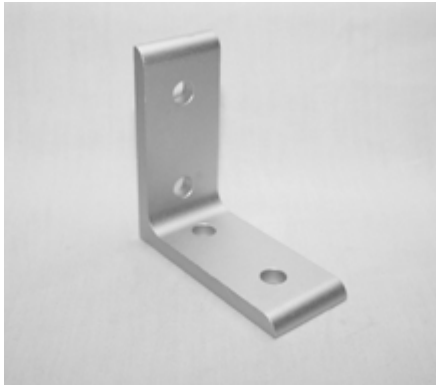
15CB4803

4 HOLE INSIDE CORNER BRACKET



15CB4804

4 HOLE INSIDE CORNER BRACKET



15CB4805

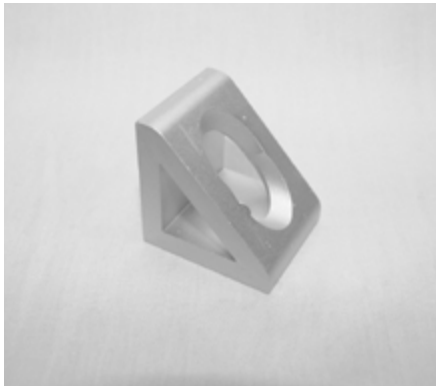
8 HOLE INSIDE CORNER BRACKET



Corner Gussets

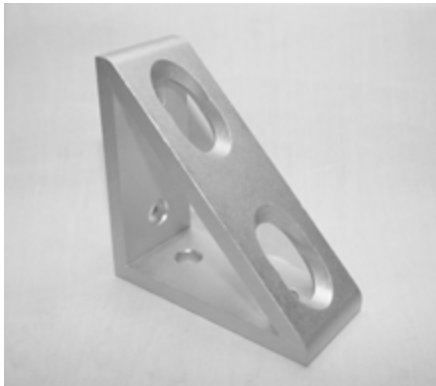
15CB4840

2 HOLE INSIDE GUSSET CORNER BRACKET



15CB4842

4 HOLE INSIDE GUSSET CORNER BRACKET



15CB4843

8 HOLE INSIDE GUSSET CORNER BRACKET

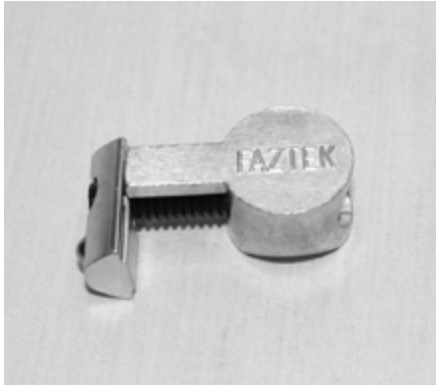


*10 series and metric offerings available in our Extended Product catalog

Fasteners

15FAC3888

ANCHOR FASTENER



15FAC3890

T-ANCHOR FASTENER




15FAC3865


END FASTENER




Economy T-Nuts

	Part No.	Description
	15FA3501	5/16-18 Economy T-Nut
	15FA3502	5/16-18 Double Economy T-Nut
	15FA3506	1/4-20 Economy T-Nut


Standard T-Nuts

	Part No.	Description
	15FA3503	5/16-18 Standard T-Nut
	15FA3513	10/32 Standard T-Nut


Drop-In T-Nuts

	Part No.	Description
	15FA3511	5/16-18 Drop-In T-Nut w/ Alignment Ball
	15FA3536	1/4-20 Drop-In T-Nut w/ Alignment Ball
	15FA3534	10/32 Drop-In T-Nut w/ Alignment Ball

Drop-In T-Nuts


	Part No.	Description
	15FA3522	5/16-18 Drop-In T-Nut w/ Spring Leaf

Button Head Socket Cap Screws


	Part No.	Description
	13FA3321	5/16-18 x 1/2 BHSCS
	13FA3322	5/16-18 x 5/8 BHSCS
	13FA3323	5/16-18 x 3/4 BHSCS
	13FA3316	10-32 x 3/8 BHSCS
	13FA3128	10-32 x 1/2 BHSCS
	13FA3129	10-32 x 5/8 BHSCS

*10 series and metric offerings available in our Extended Product catalog


Flanged Button Head Socket Cap Screws

	Part No.	Description
	13FA3330	5/16-18 x 1/2 FBHSCS
	13FA3331	5/16-18 x 5/8 FBHSCS
	13FA3308	1/4-20 x 3/8 FBHSCS
	13FA3309	1/4-20 x 1/2 FBHSCS
	13FA3310	1/4-20 x 3/4 FBHSCS


Socket Head Cap Screws

	Part No.	Description
	13FA3325	5/16-18 x 5/8 SHCS
	13FA3326	5/16-18 x 3/4 SHCS
	13FA3327	5/16-18 x 7/8 SHCS
	13FA3328	5/16-18 x 1-1/4 SHCS


Flat Head Socket Cap Screws

	Part No.	Description
	13FA3111	1/4-20 x 5/8 FHSCS

Washers

	Part No.	Description
	13FA3700	5/16" x .062" Washer
	13FA3701	1/4" x .062" Washer

Concrete Floor Anchors

	Part No.	Description
	13FA3377	1/2" X 3 3/4"

Door Accessories

15AC7950

CHROME LOCKING DOOR HANDLE



13AC7301

MEDIUM DOOR HANDLE



15HI8700

STEEL PIVOT HINGE W/ LOCKING HANDLE



15HI8704

HEAVY DUTY HINGE



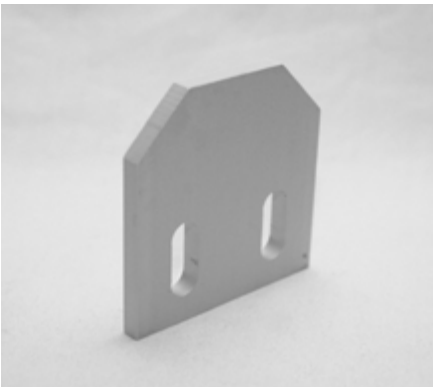
15HI8514

ALUMINUM BUTT HINGE



13AC7800

DOOR CATCH PLATE



15AC8762

DEAD BOLT LATCH



15AC7966

LOCKING SLAM LATCH



15AC8745

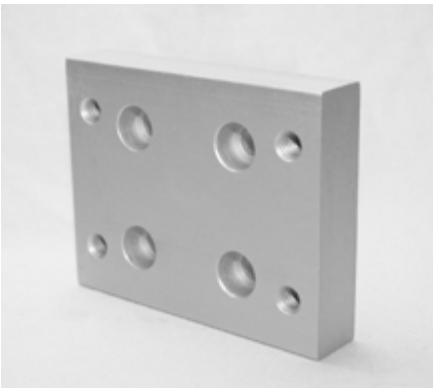
DOUBLE DETENT BALL LATCH



Base Plates for Flange Mount casters

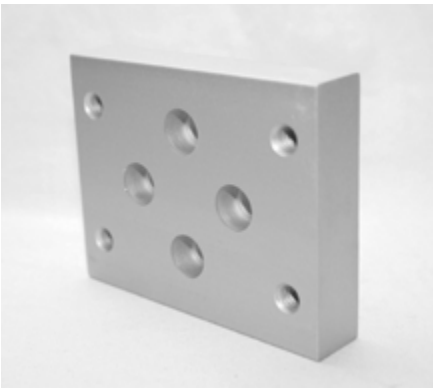
15BP2500

FLANGE MOUNT CASTER BASE PLATE



15BP2501

FLANGE MOUNT CASTER BASE PLATE



15BP2503

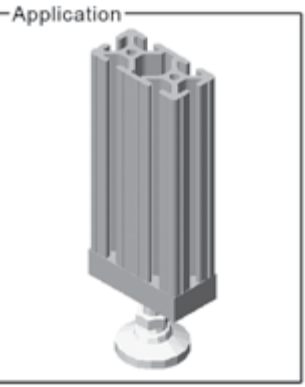
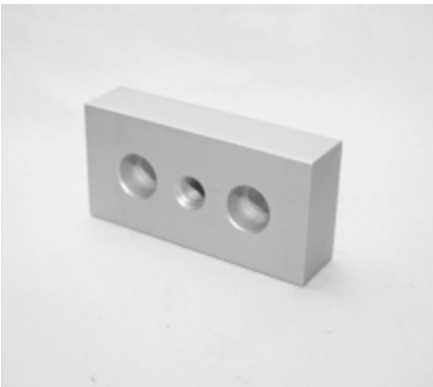
FLANGE MOUNT CASTER BASE PLATE



Base Plates for Leveling Feet and Stem Casters

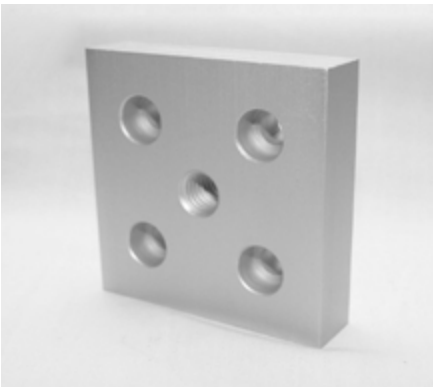
15BP2561

1.5" X 3.0" BASE PLATE - 3/8-16 TAP THRU



15BP2583

3.0" X 3.0" BASE PLATE - 1/2-13 TAP THRU



Casters

13CA8102

4" SWIVEL CASTER W/ BRAKE



13CA8103

4" RIGID CASTER W/O BRAKE



13CA8100

2" THREADED STEM CASTER W/ BRAKE



*10 series and metric offerings available in our Extended Product catalog

*10 series and metric offerings available in our Extended Product catalog

Standard & Deluxe Feet

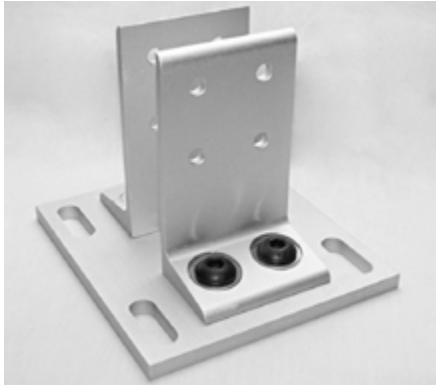
FLOOR MOUNT FOOT

AVAILABLE SIZES AND HOLE PLACEMENT DEPENDENT ON SERIES



FLOOR MOUNT BASE PLATE

AVAILABLE SIZES AND HOLE PLACEMENT DEPENDENT ON SERIES



DELUXE LEVELING FOOT

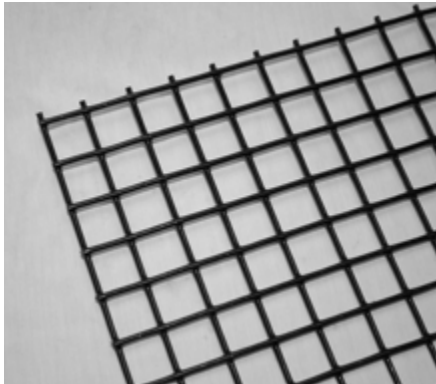
AVAILABLE SIZES DEPENDENT ON SERIES



Panels and Panel Accessories

PVC COATED WIRE MESH

MULTIPLE COLORS & STYLES AVAILABLE



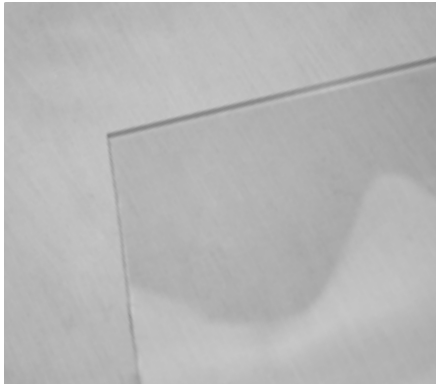
15AC7105

1.5" MESH RETAINER



PANELS

POLYCARBONATE, ABS, & OTHER STYLES AVAILABLE



Linear Motion

15CP8560

DOUBLE FLANGE LINEAR BEARING



15CP8562

DOUBLE FLANGE LINEAR BEARING



15LM8520

RATCHETING HANDLE BRAKE KIT



15AC8748

1/4 TURN PANEL MOUNT BLOCK



RUBBER PANEL GASKET

RUBBER PANEL GASKET



T-SLOT COVER

BLACK, GRAY, & YELLOW T-SLOT COVER



13CP0400

IN-LINE ROLLER WHEEL BEARING



13CP0401

C-RAIL ROLLER GUIDE



15LM8500

BI-FOLD DOOR GLIDE BLOCK



Assembly Tools

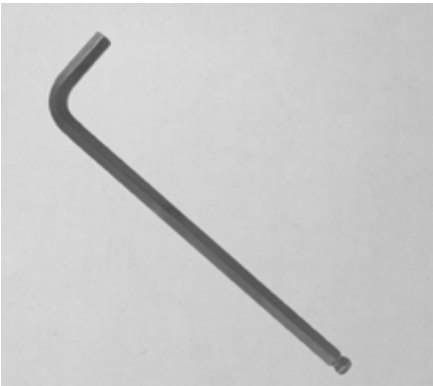
Ball End T-Handle Drivers

3/16", 1/4", & 5/32"



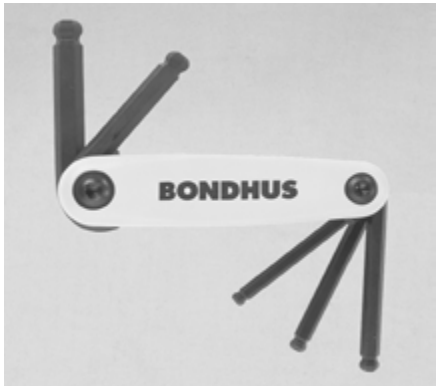
Ball End Hex Wrenches

3/16", 1/4", & 5/32"



13TL1401

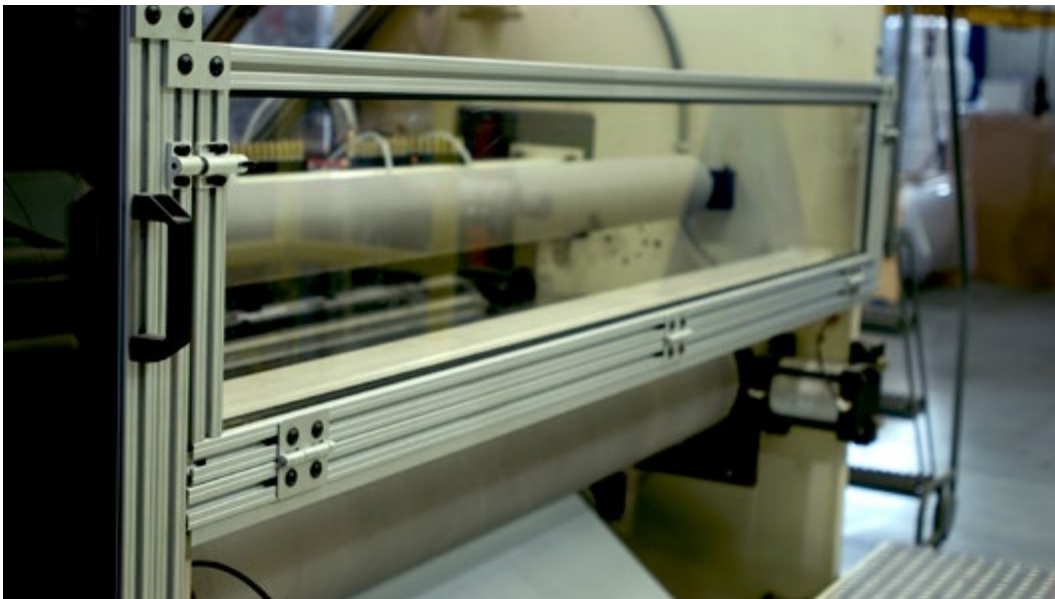
BALL END FOLD OUT SET



*10 series and metric offerings available in our Extended Product catalog

*10 series and metric offerings available in our Extended Product catalog







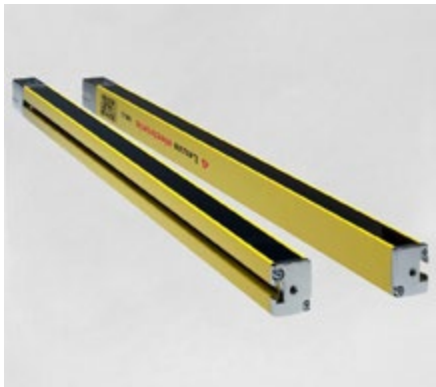
Electronic Devices

Faztek’s electronic devices line can be used as an alternative to traditional hard guards or in combination with a hard guard for added peace of mind. These devices come in a variety of styles for a wide variety of needs.

- Opto-electronic devices either emit light, channel light, detect light or are controlled by light. These include light curtains and area scanners to detect a break in the light.
- Contact devices make connection with a door and the hazards power source. When the door is opened the connection is lost and the power is isolated. These devices include e-stops, pressure sensitive mats, keyed interlocks, and hinged interlocks.
- Non-Contact devices do not make direct contact with their counterpart, but instead are connected by a magnet or radio frequency and when connection is lost the hazards power is isolated. These devices include coded magnet sensors and RFID switches.

Below is a small selection of our most commonly used e-safety devices. We partner with many electronic safety device vendors to bring you quality electronic devices. We are also able to provide you with specific brands, size, and safety devices not show below by request.

LIGHT CURTAINS



AREA SCANNERS



PRESSURE SENSITIVE MATS



KEYED INTERLOCKS



HINGE INTERLOCKS



RFID SWITCHES



Clipless Steel Guarding

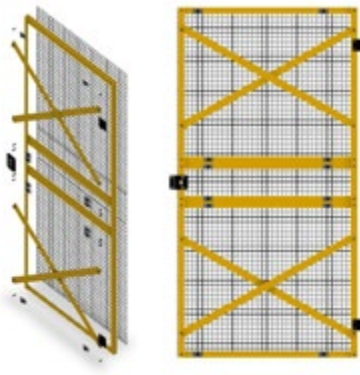
Faztek’s steel guarding line is used to create a wide variety of custom products, including robotic guards, safety guards, welding cells, conveyor guards, and more. Faztek has taken its original steel line with its easy assembly, sized to exact specifications, simple to modify, and modularity and combined it with a clipless upgrade to offer a more rigid product, while virtually eliminating horizontal waviness in the wire panels.

- Start basic and upgrade to specific needs as your go
- Adjustable foot for uneven floors
- No pre-determined sizes, order the sizes specific to your needs
- No clips means no snagging or catching clothing on your guard

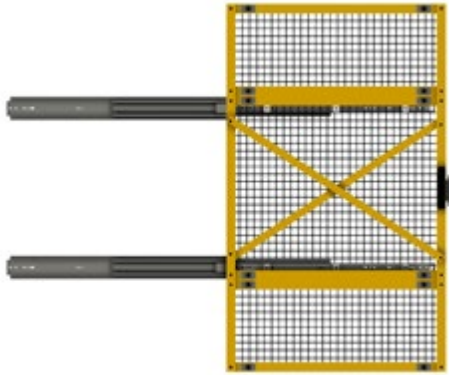
Steel Panel



Steel Swing Door



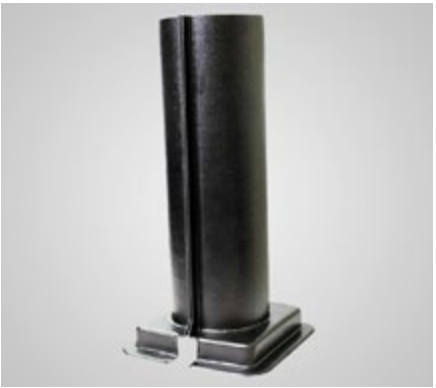
Steel Sliding Door

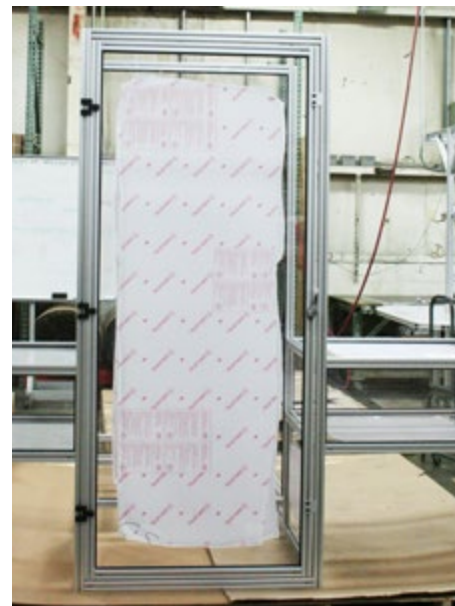


Thermoformed Plastic Guarding

Plastic machine guards and bearing covers are thermoformed or fabricated from up to a strong 3/16” ABS with a scratch resistant hair-cell finish on the outside.

- Advantages of Plastic Machine Guards
- ABS and PETG plastic guards are flexible to absorb both impact and sound.
 - Does not rust.
 - Lightweight and durable.
 - ABS can withstand 200° F, with brief exposures up to 230° F.
 - Comes in a variety of colors, styles, and sizes.
 - Available in 1/8” ABS plastic metal detectable material that is infused with food grade stainless steel



This image shows a blank sheet of white paper with horizontal ruling lines. The lines are evenly spaced and run across the width of the page. There are no margins, text, or other markings on the paper.



Our Mission

Faztek, LLC recognizes that our primary mission is to provide our customers with custom industrial solutions through innovative designs, quality products, and dependable service within a reasonable time frame at an appropriate price. We also recognize that our primary asset is our employees and accordingly, we provide them with quality training, innovative techniques, and appropriate advancement opportunities.

Our Story

Faztek has evolved from a standard commodity aluminum extrusion supplier into a full-service industrial solutions provider. By expanding our product offering, we have been able to offer quality service and multiple types of products that can be combined and customized to meet specific customer needs. We work directly with customers to create truly custom designs every time.

The benefit of using Faztek's service not only includes our turnkey services that will help you through every step of your products life cycle, but our friendly and knowledgeable staff is here to support you through the entire process. From the initial design through your projects final installation, we are here to help as much or as little as your team needs.