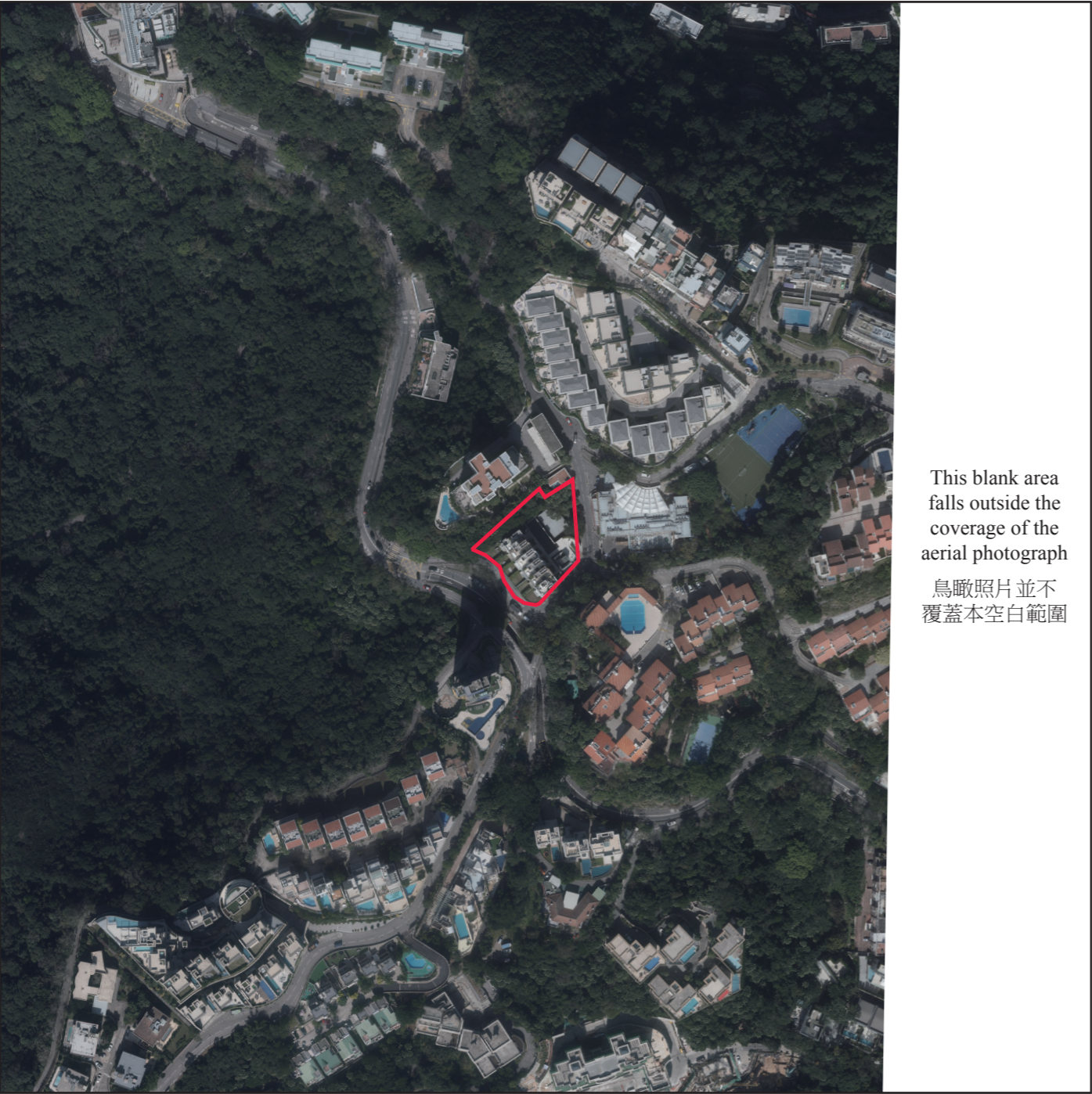


# Aerial photograph of the development 發展項目的鳥瞰照片



This blank area  
falls outside the  
coverage of the  
aerial photograph  
鳥瞰照片並不  
覆蓋本空白範圍

Location of the Development  
發展項目的位置

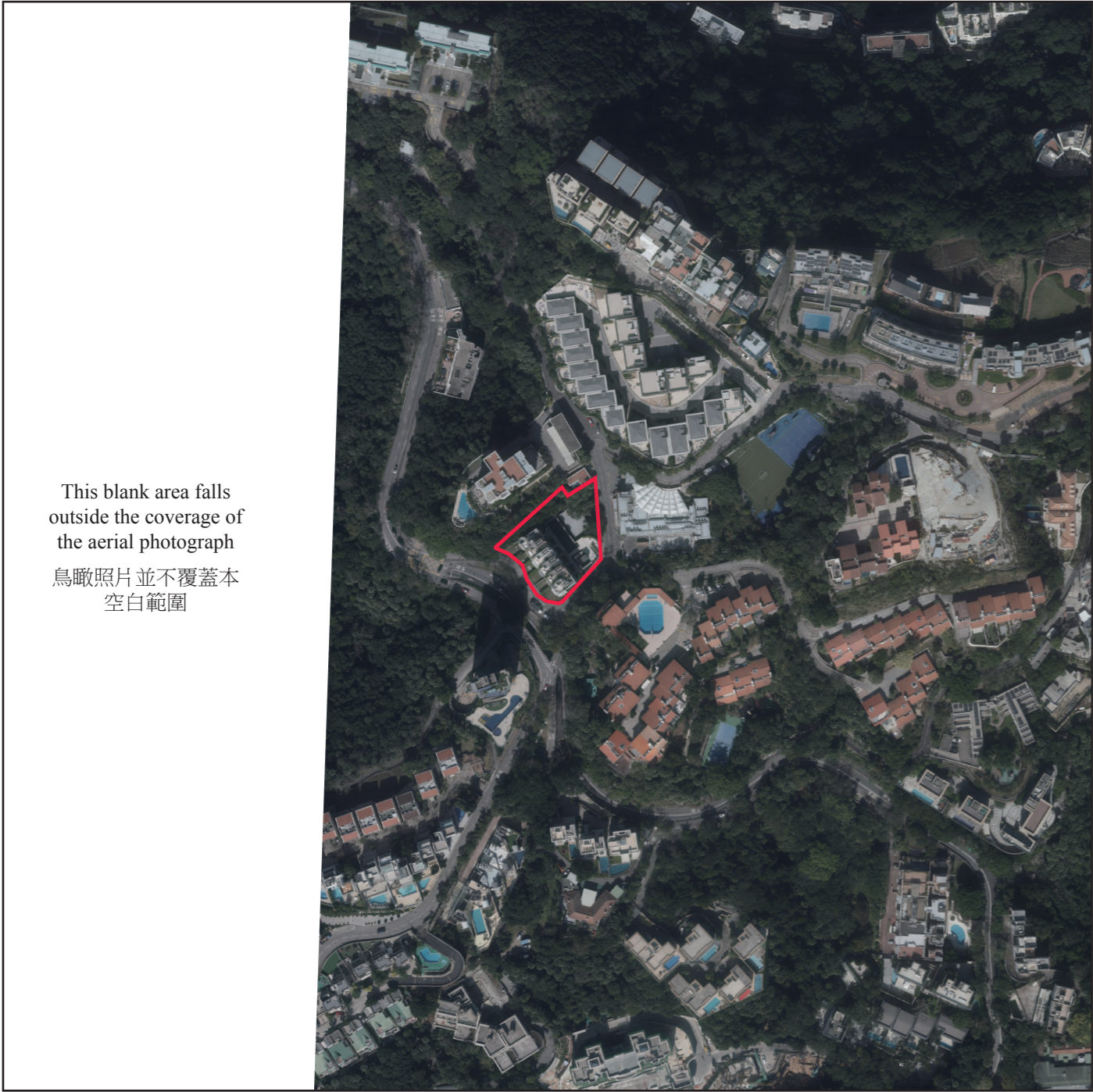
Adopted from part of the Aerial Photograph taken by the Survey and Mapping Office of Lands Department at a flying height of 6,900 feet, Photo No. E178401C, dated 23rd December 2022.  
摘錄自地政總署測繪處於2022年12月23日在6,900呎飛行高度拍攝之航空照片之部份，編號為E178401C。

Survey and Mapping Office, Lands Department, The Government of the HKSAR © Copyright reserved – reproduction by permission only.  
香港特別行政區政府地政總署測繪處©版權所有，未經許可，不得複製。

- Notes:
1. The above Aerial Photograph is available for free inspection during normal office hours at the sales office.
  2. Due to technical limitations, the area displayed in this Aerial Photograph is more than that required by the Residential Properties (First-hand Sales) Ordinance.
- 備註：
1. 上述鳥瞰照片現存於售樓處，於正常辦公時間，可供免費查閱。
  2. 由於技術限制，此鳥瞰照片所顯示的範圍多於《一手住宅物業銷售條例》所要求顯示的範圍。

# Aerial photograph of the development

## 發展項目的鳥瞰照片



This blank area falls outside the coverage of the aerial photograph  
鳥瞰照片並不覆蓋本空白範圍

Location of the Development  
發展項目的位置

Adopted from part of the Aerial Photograph taken by the Survey and Mapping Office of Lands Department at a flying height of 6,900 feet, Photo No. E178400C, dated 23rd December 2022.  
摘錄自地政總署測繪處於2022年12月23日在6,900呎飛行高度拍攝之航空照片之部份，編號為E178400C。

Survey and Mapping Office, Lands Department, The Government of the HKSAR © Copyright reserved – reproduction by permission only.  
香港特別行政區政府地政總署測繪處©版權所有，未經許可，不得複製。

- Notes:
1. The above Aerial Photograph is available for free inspection during normal office hours at the sales office.
  2. Due to technical limitations, the area displayed in this Aerial Photograph is more than that required by the Residential Properties (First-hand Sales) Ordinance.
- 備註：
1. 上述鳥瞰照片現存於售樓處，於正常辦公時間，可供免費查閱。
  2. 由於技術限制，此鳥瞰照片所顯示的範圍多於《一手住宅物業銷售條例》所要求顯示的範圍。