

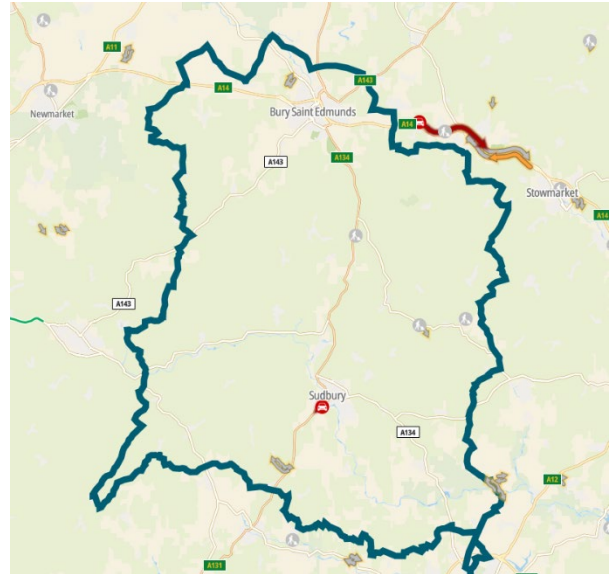


Adventure Group Ride Out 05.11.2023

Another successful ride out with the gang today covering approximately 80 miles of pristine Essex & Suffolk countryside. The route was full of B roads, unclassified and main roads that kept all entertained.

Starting from ASDA in Colchester at 10 o'clock sharp and heading out towards Wakes Colne, Maplestead, Sible Hedingham, Finchingfield, Stoke by Clare to Bury St Edmunds before heading home. We cut the ride short due to commitments in the afternoon.

The weather was amazing for the first time in what seems like ages, with roads that did not disappoint, although plenty of flooded roads due to the recent storm in the countryside to tackle. We are very fortunate in this part of the world and have some amazing roads to ride.



The pace was nice and easy for the roads we were riding on, with plenty of grip on wet and dry roads. There was debris to deal with in some sections, but all part of riding adventure bikes.

Plenty of getting up on the pegs to tackle some sections.

On the whole a very good day out with the Adventure bike group and we are looking forward to the next jaunt in the coming weeks.

If you would like to take the next step and join a club to ride Adventure, Trials, enduros or motocross, then Colchester (Castle) MCC are the club to join. Please check out our membership pages for more information at: <https://castlecolchestermcc.co.uk/home>

For more information, Contact Matt on: 0779 538 5380

