

Pocketful of Dreams Mini Quilt

A Foundation Pieced Design

Skill Level: Intermediate

Designed By
Alexandra Henry
Sewn By
Alexandra Henry and Charlene Allison

www.alexasworld.us



This endearing spring mini-quilt is another of Alexandra's pocketful designs. Use it for Easter 'treasures' or spring items. Pellon® Stitch-N-Tear® Lite or regular foundation paper can be used to piece the bunny block. 'Pocketful of Dreams' measures 12-½" square and fits perfectly on Ackfeld's 12" x 14" table stand or it can be hung on a wall in reach of little hands for the 'treasures' in the pocket.

Fabrics Needed

Ear fabric
Face fabric
Background
Border
Piping
Backing and hanging sleeve
Binding

One fat quarter
One fat quarter
One fat quarter
¼ yard
One fat eighth
One 13" square and one 2" x 11½" rectangle
⅛ yard

Materials Needed

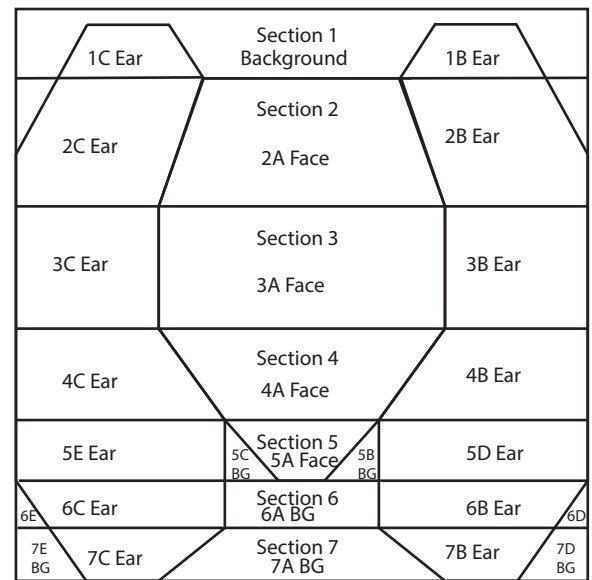
Pellon® 835 Stitch-N-Tear® Lite OR foundation paper
Batting
Pellon® 805 Wonder-Under®
Embroidery floss
Thread

Two 8-½" x 12" rectangles
One 13" square
Small amount

Tools Needed

Sewing machine and related supplies
Rotary cutter and related supplies

Instructions



BG = Background

Step 1. Cut pieces as follows and place them in piles so the right piece can be found easily:

Section 1

Ear Pieces 1B and 1C

Cut two 3¼" x 1¼" rectangles

Section 2

Face Piece 2A
Ear Pieces 2B and 2C

Cut one 2⅝" x 4¾" rectangle
Cut two 4" x 3⅝" rectangles

Section 3

Face Piece 3A
Ear Pieces 3B and 3C

Cut one 4⅝" x 2¼" rectangle
Cut two 2⅝" x 2¼" rectangles

Section 4

Face Piece 4A
Ear Pieces 4B and 4C

Cut one 5" x 1⅞" rectangle
Cut two 3¾" x 1⅞" rectangles

Section 5

Face Piece 5A
Background Pieces 5B and 5C
Ear Pieces 5D and 5E

Cut one 3⅞" x 1⅜" rectangle
Cut two 1¾" x 1½" rectangles
Cut two 3½" x 1⅜" rectangles

Section 6

Background Piece 6A
Ear Pieces 6B and 6C
Background Pieces 6D and 6E

Cut one 1¼" x 2¾" rectangle
Cut two 3½" x 1¼" rectangles
Cut two 1½" x 1¾" rectangles

Section 7

Background Piece 7A
Ear Pieces 7B and 7C
Background Pieces 7D and 7E

Cut one 5¼" x 1¼" rectangle
Cut two 3½" x 1¼" rectangles
Cut two 2¼" x 1¼" rectangles

Facing - Ear fabric

Background

Piping

Border

Hanging sleeves (use backing fabric)

Cut one 6" x 8¾" rectangle

Cut one fabric G 8¾" square

Cut four 1" x 8¾" strips

Cut two 2⅝" x 8¾" rectangles

Cut two 2⅝" x 13" rectangles

Cut one 2" x 11½" rectangle



Assembly Instructions

Set stitching length to 1.5 for all foundation stitching.

Step 2. Cut two 8½" x 12" rectangles of Stitch-N-Tear® Lite or foundation sheets. Press the Stitch-N-Tear® Lite 8½" x 12" rectangles until they lay completely flat.

Step 3. Print one sheet at a time. Print one copy of each of the two template pages. Make sure the printer is printing at 100%, actual size. Check gauge.

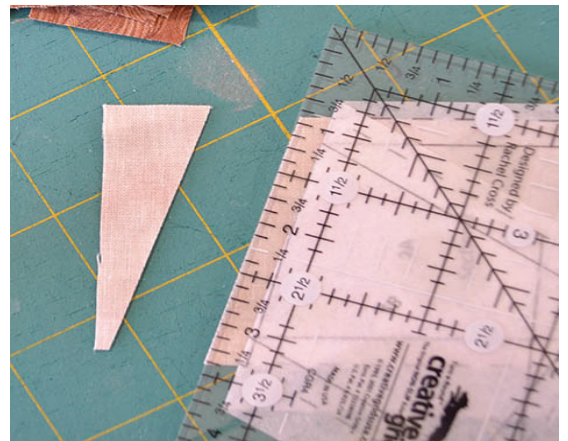
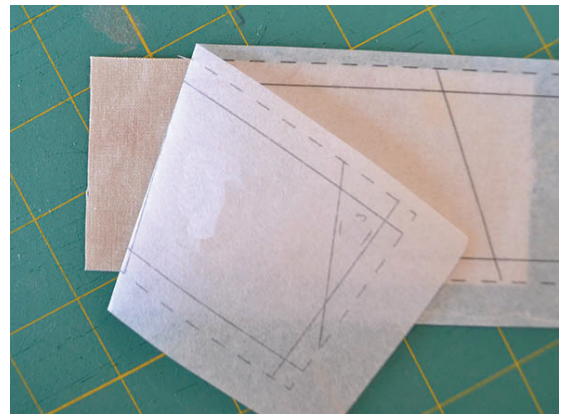
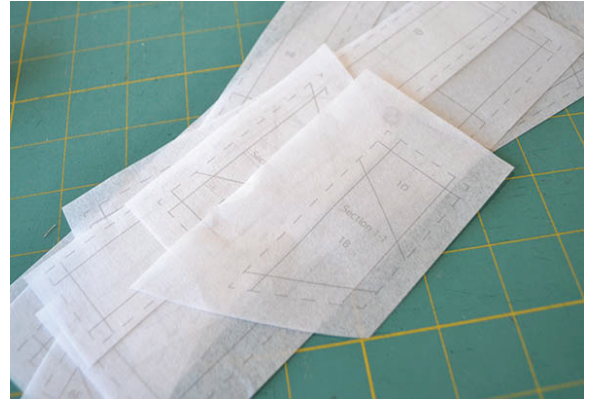
Step 4. Cut the foundation sections apart. Cut outside the dashed lines. There will be extra foundation around the dashed lines for each section.

NOTE: All printable foundation sheets have been preset to print at a lighter tone (40% gray scale) to avoid any ink transfer from the Stitch-N-Tear® Lite to fabric if moistened.

Step 5. Place both section 1 foundations face down. Center piece 1B and 1C right side up over their corresponding places on the foundation. Pin in place or place a dab of temporary glue in the corners to hold the fabric on the foundation. Turn the foundation face up. Trim all seams to the dashed lines. Set aside.

Step 6. Place section 2 foundation face down. Center piece 2A right side up over the corresponding place on the foundation. Pin in place. Turn the foundation face up. Fold the foundation on the stitch line between 2A and 2B or 2C.

Step 7. Trim seam allowance to ¼". Repeat with other angled seam line on 2A.



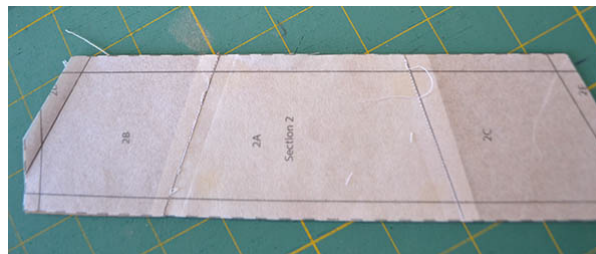
Step 8. Place piece 2B right sides together with piece 2A, aligning the raw edge as shown. Turn foundation face up and stitch on the seam line between 2A and 2B. Open piece 2B and press.



Step 9. Place piece 2C right sides together with piece 2A, aligning the raw edge as shown. Turn foundation face up and stitch on the seam line between 2A and 2C. Open piece 2C and press.



Step 10. Turn foundation face up. Trim all sides on the dashed lines.



Step 11. Repeat Steps 5 through 10 with sections 3 through 6, folding foundations back and trimming seam allowances to 1/4" when necessary before stitching. Press all pieces as they are added.

Step 12. For section 7, it is easier to prepare all the pieces before stitching any of them down to the foundation. Place piece 7A on the foundation, trim, then remove. Repeat with the rest of the pieces.



Step 13. Sew all the pieces down to the foundation from 7A through 7E. Press each piece as it is added. Turn foundation face up and trim on all dashed lines.



Step 14. Sew the sections together following the seam line on the foundation and matching points. Press all rows towards the bottom of the block except the seams between section 1 and section 2. Press those two seams up.



Step 15. To prepare the facing, fold in $\frac{1}{4}$ " on one $8\frac{3}{4}$ " side of the $6" \times 8\frac{3}{4}"$ facing rectangle and press. Stitch the folded edge. Place the facing right sides together with the top of the block aligning the raw edges as shown. With the foundation face up, stitch along the seam line on piece 2C, 1C, 2A, 1B, and 2B, pivoting at all points.



Step 16. Trim the excess fabric along the dashed lines of the foundation. Clip the two inner points, being careful not to go through the stitched seam.



Step 17. Turn the facing right side out. Poke out the corners. Press.

Step 18. Trace the face pieces on page 7 onto the paper side of the Wonder-Under®. Place the fusible side of the Wonder-Under® on the wrong side of fabric pieces and iron. Cut out all pieces of the eyes, nose, mouth and teeth. Remove the paper backing and place the pieces on the block. Fuse following manufacturer's instructions. The center of the eyes can be applied or drawn in with a fabric marker.



Step 19. Using a short stitch, machine applique around each fused piece. The lines on the mouth, teeth, and whiskers may be drawn, machine stitched or hand embroidered.

Step 20. Place the 8 $\frac{3}{4}$ " square background behind the block. Baste the edges together. If a dark background is used with light ears, the background square may be trimmed to the same length as the facing so the dark does not show through the light ears. The top of the background square will extend $\frac{1}{2}$ " above the ears. Stitch the two outer angled sides of the ears that extend from piece 1B to 2B and 1C to 2C. Do not stitch across the top of the ear, nor the center of the head of the bunny.



Step 21. Stitch across the block on the seam line between sections 3 and 4. This creates the pocket. If a shorter pocket is desired, stitch across the seam line between sections 2 and 3 instead of 3 and 4.

Step 22. To create the piping, fold the piping strips in half lengthwise with the wrong sides together. Press. Place one piping strip on the top of the front of the block, aligning the raw edges. Stitching using a $\frac{1}{4}$ " seam allowance. Repeat this step with the bottom of the block, then stitch one piping strip to the left and right sides.



Step 23. Place one 2 $\frac{5}{8}$ " x 8 $\frac{3}{4}$ " border rectangle on each side of the block, right sides together. Stitch using a $\frac{1}{4}$ " seam allowance. Press seams towards the border rectangles.

Step 24. Repeat Step 23 with the top and bottom 2 $\frac{5}{8}$ " x 13" rectangles.

Step 25. Cut one 13" square of backing. Cut one 13" square of batting.

Place against the wrong side of the backing square.

Step 26. Place the block right side up on the batting. Baste in place with pins or basting stitches.

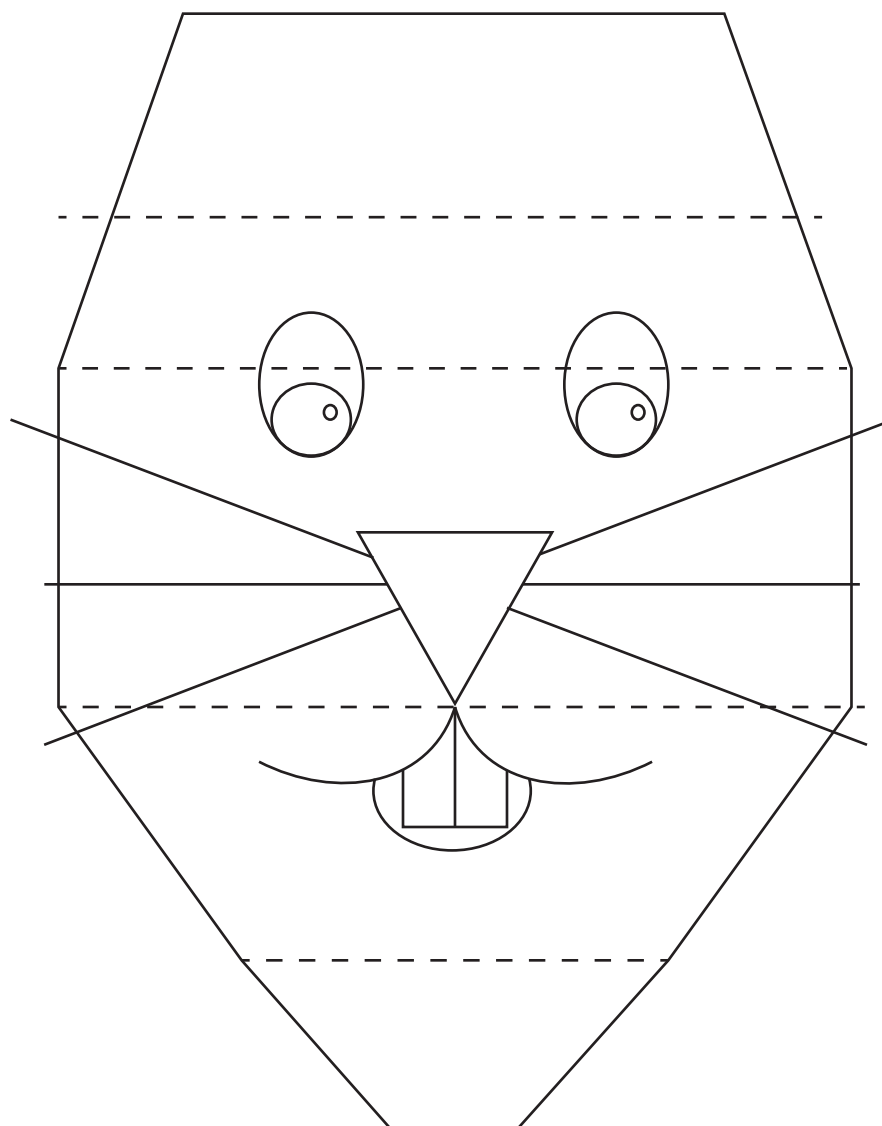
Step 27. Quilt as desired but be careful not to quilt on top of the pocket area.

Step 28. Fold the hanging sleeve in half wrong sides together and press. Turn the ends in $\frac{1}{4}$ " and stitch. Place the hanging sleeve on the back of the mini-quilt with the raw edges aligned with the top of the quilt. Baste in place using a $\frac{1}{8}$ " seam allowance.

Step 29. Make binding. Sew on binding.



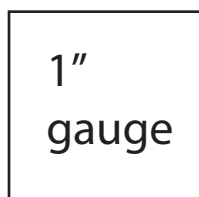
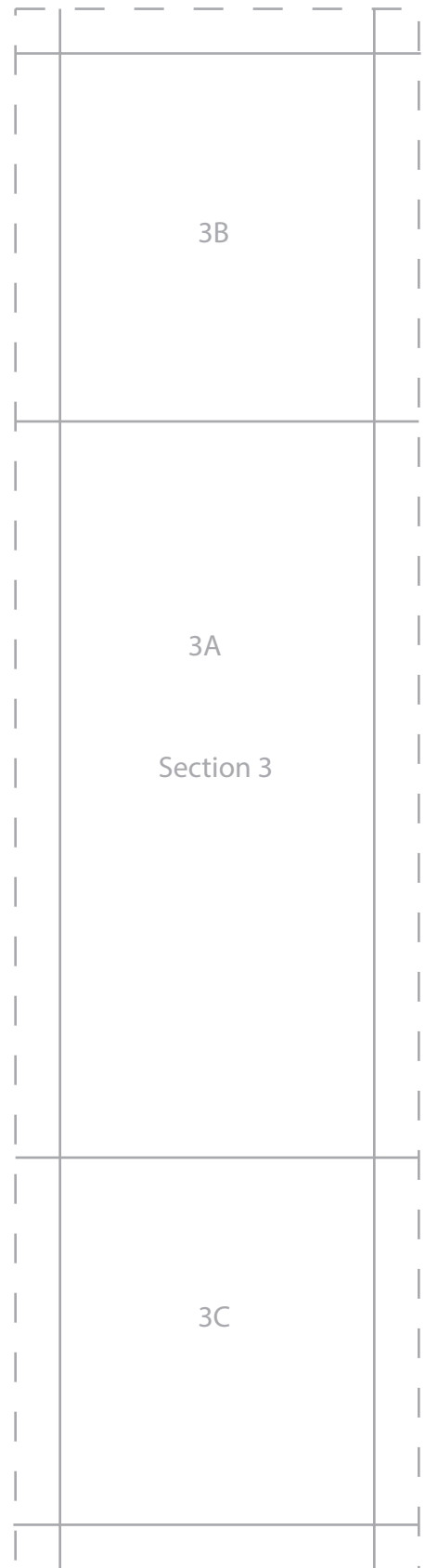
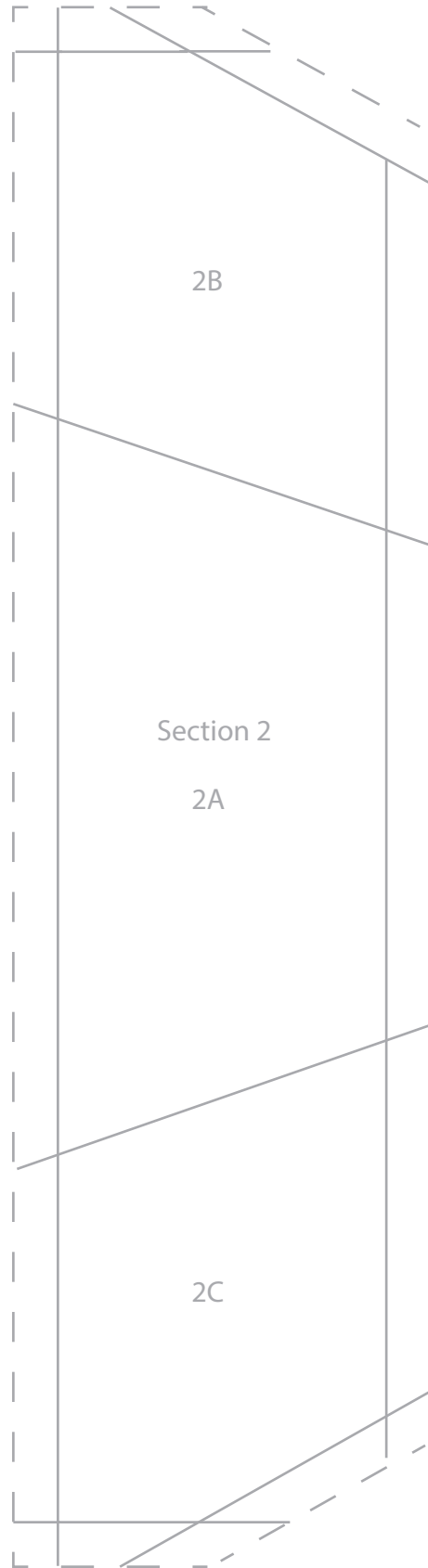
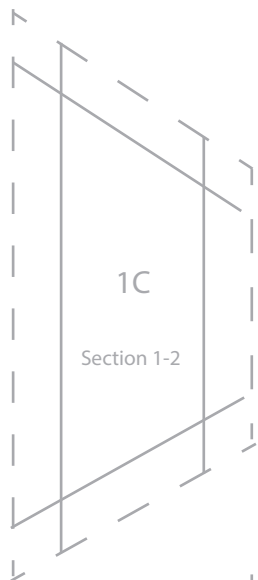
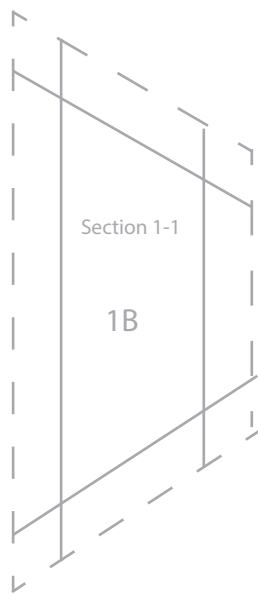
Templates and placement for the applique face.



1"
Gauge

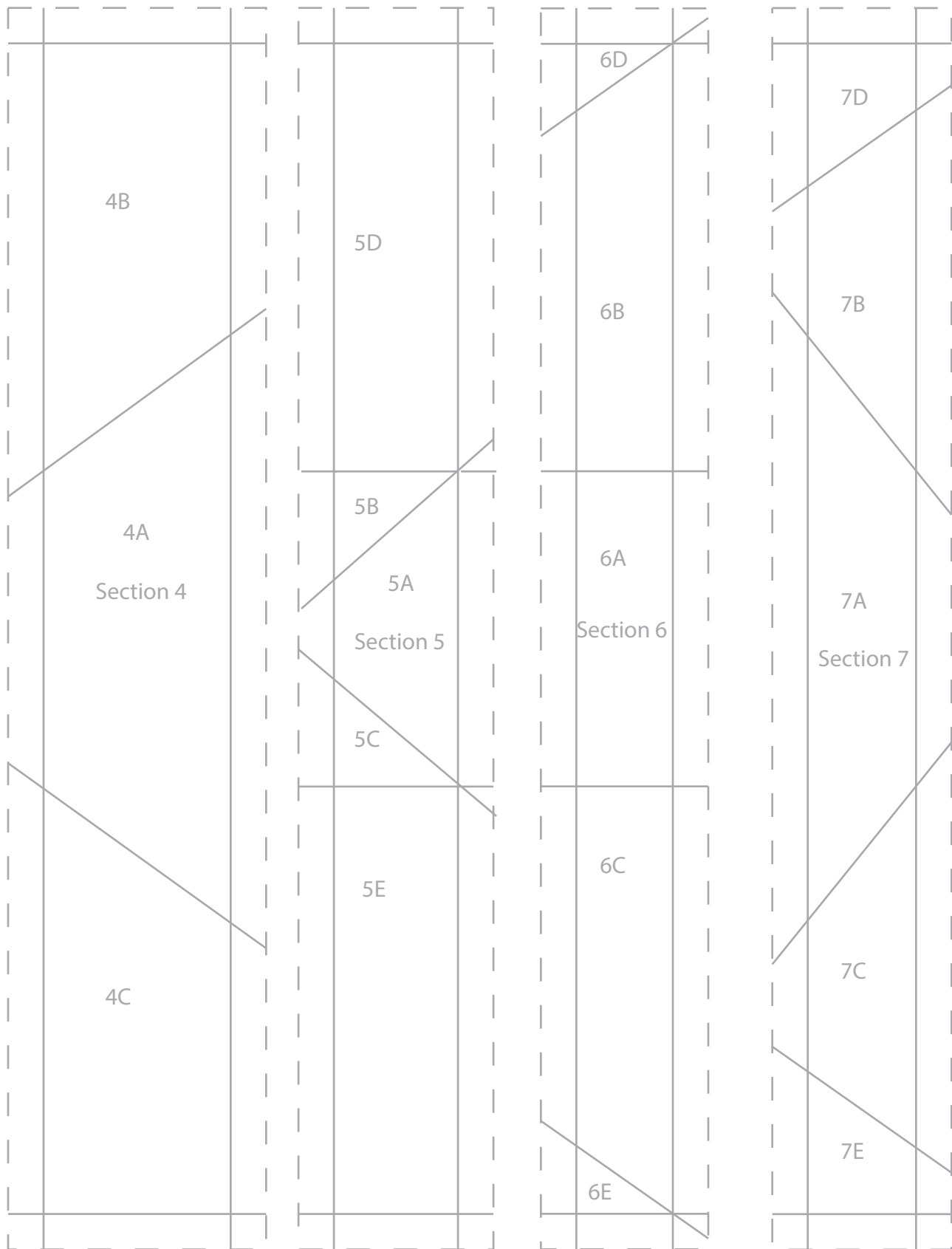
Foundation Templates

Print at 100%, actual size. Check gauge.



Foundation Templates

Print at 100%, actual size. Check gauge.



1"
gauge