

Pocketful of Love Mini Quilt

A Foundation Pieced Design

Skill Level: Beginner

Designed By
Alexandra Henry
Sewn By
Alexandra Henry

www.alexasworld.us



This is one of my most popular pocketful designs. It is made using the same foundation pieced heart that my 'Valentine Table Topper' uses. Make one for a gift and tuck a special treat into the pocket. You can use Pellon® Stitch-N-Tear® Lite to foundation piece the heart block. Run the Stitch-N-Tear® Lite through your ink jet printer to create the foundations for the blocks. Pocketful of Love measures 12¼ square and fits perfectly in Ackfeld's 12" x 14" table stand.

Fabrics Needed

Lights
Darks
Background
Border
Piping
Backing and hanging sleeve
Binding

One fat eighth each of three fabrics
One fat eighth each of three fabrics
One fat quarter
¼yard
One fat eighth
One 14" square and one 2" x 11-½" rectangle
⅛ yard

Materials Needed

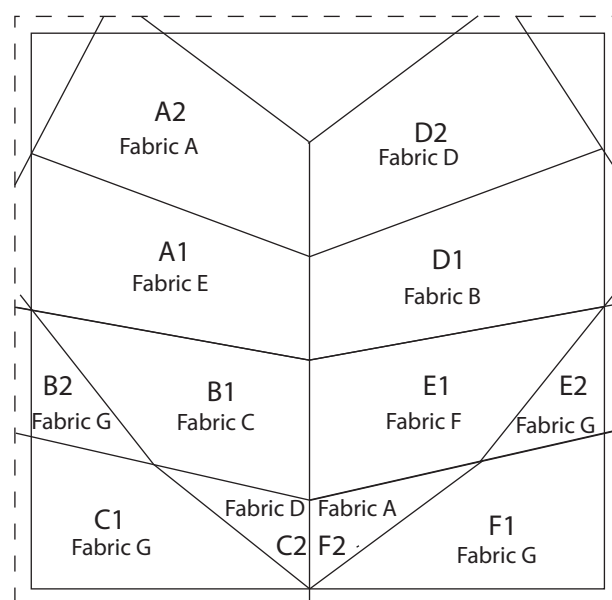
Pellon® 835 Stitch-N-Tear® Lite
Batting
Thread

Two 8½" x 12" rectangles
One 14" square

Tools Needed

Sewing machine and related supplies
Rotary cutter and related supplies

Cutting Instructions



Cut pieces as follows:

| | |
|----------------|------------------|
| Dark fabric A | Piece A2 |
| | Piece F2 |
| Dark fabric B | Piece D1 |
| Dark fabric C | Piece B1 |
| Light fabric D | Piece D2 |
| | Piece C2 |
| Light fabric E | Piece A1 |
| Light fabric F | Piece E1 |
| Light fabric G | Pieces B2 and E2 |
| | Pieces C1 and F1 |

Cut two 6" x 4" rectangles
 Cut one 4" x 3" rectangle
 Cut one 6" x 4" rectangle
 Cut one 5½" x 3½" rectangle
 Cut two 6" x 4" rectangles
 Cut one 4" x 3" rectangle
 Cut one 6" x 4" rectangle
 Cut one 5½" x 3½" rectangle
 Cut two 4" x 3" rectangles
 Cut two 5" x 3¼" rectangles

Facing

Cut one fabric A 5" x 7" rectangle

Background

Cut one fabric D 5" x 7" rectangle

Piping

Cut one fabric G 8¾" square

Border

Cut four 1" x 8¾" strips

Cut two 2½" x 8¾" rectangles

Cut two 2½" x 12¾" rectangles

Cut one 2" x 11½" rectangle

Hanging sleeves (use backing fabric)

Refer to foundation piecing layouts on pages 11 and 12.

Assembly Instructions

Set stitching length to 1.5 for all foundation stitching.

Cut two 8½" x 11" rectangles of Stitch-N-Tear® Lite. Press the Stitch-N-Tear Lite 8½" x 11" rectangles until they lay completely flat.

Print one sheet at a time. Print one copy of each of the two template pages. Make sure the printer is printing at 100%. Check gauge.

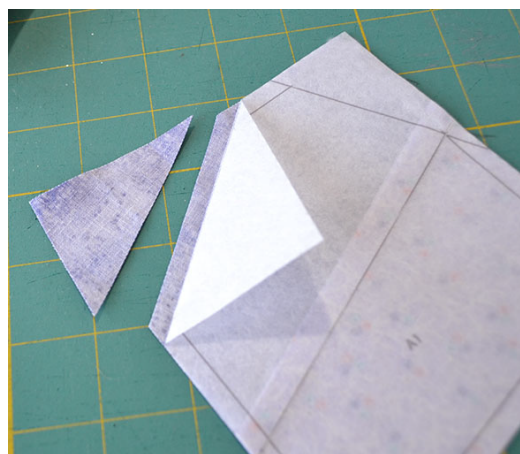
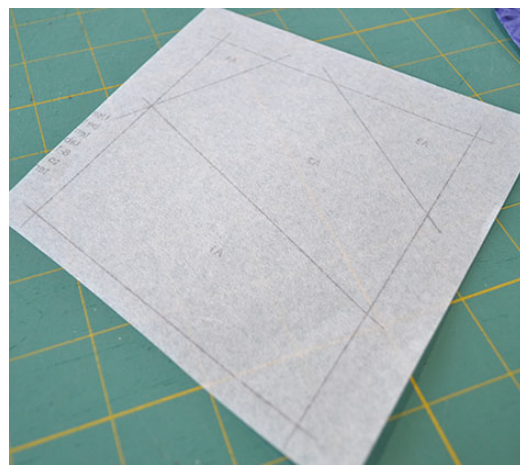
Cut the foundation sections apart. Cut outside the dashed lines. There will be extra foundation around the dashed lines for each section.

Place section A foundation face down. Using fabric E, center the piece A1 6" x 4" rectangle right side up over the A1 place on the foundation, extending over the line between A1 and A2 ¼". Pin in place.

Using fabric A, place the piece A2 6" x 4" rectangle right sides together with the A1 piece, aligning the raw edges as shown. Pin in place. Turn piece so foundation is facing up. Stitch along the seamline between piece A1 and A2, backstitching at the beginning and end.

Open unit and press. Fold the foundation corner for section A1 along one unstitched seam as shown. Place a ruler ¼" over the seam line. Trim fabric as shown.

Repeat with the other unsewn corner of piece A2.

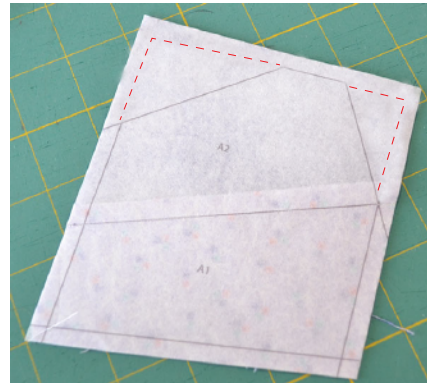


Press section A1-A2.

Turn foundation facing up. Trim all sides to $\frac{1}{4}$ " along the dashed line. Be sure to trim the upper corners as shown. There will be extra foundation on both upper corners.

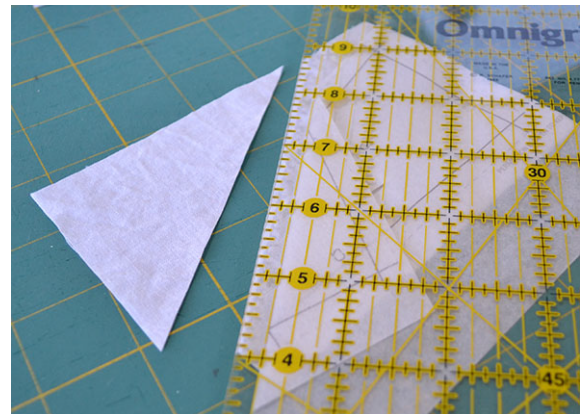
Repeat these steps with section D using the fabrics noted in the chart on page 2.

Set these two sections aside.



Place the section C foundation face down. Using fabric G, center the piece C1 5" x 3- $\frac{1}{4}$ " rectangle right side up over the C1 place on the foundation. It will cover the C2 place. Pin in place.

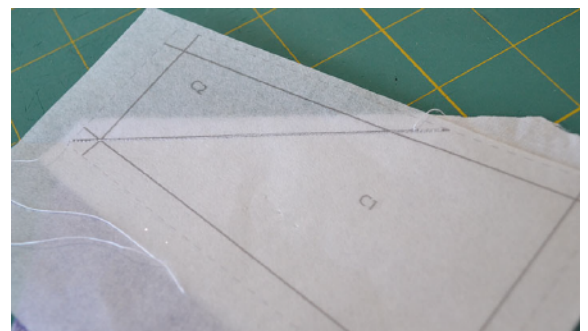
Flip the foundation so that it is facing up. Fold back just the foundation on the seam line between pieces C1 and C2. Place the $\frac{1}{4}$ " on a ruler on the seamline. Trim the excess fabric G as shown.



Unfold the foundation template. Turn the foundation piece face down.

Place the fabric D piece C2 4" x 3", right sides together with the C1 piece, aligning the raw edges. Pin in place.

Turn the foundation face up. Stitch along the seamline between piece C1 and C2, backstitching at the beginning and end.



Repeat these steps with sections B, E, and F using the fabrics noted in the chart on page 2.

Place the sections as shown. Refer to chart on page 2 if needed.



Sew the sections together for each half of the heart following the seam allowance on the foundation.



Press the seam allowances for the right half of the heart down and the seam allowances for the left half of the heart up.

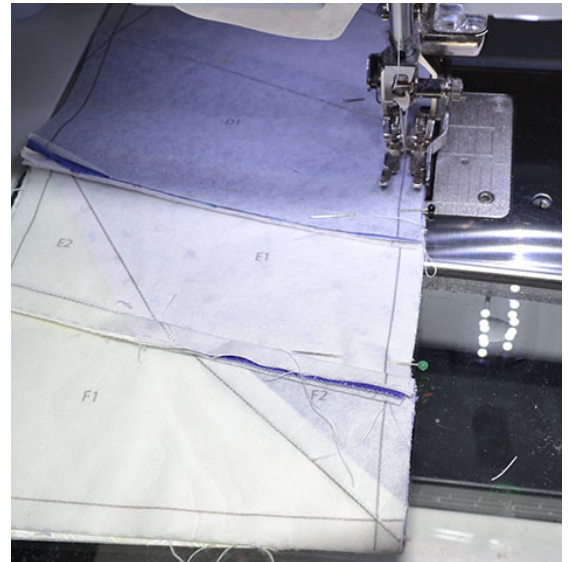


Pin the two halves of the heart together, butting matching seams together.



Sew the two halves together following the seam line on the foundation. Backstitch at the beginning and end.

NOTE: At the top of the block, the seam allowance starts at $\frac{1}{8}$ " until the top of the heart, and then increases slowly to a full $\frac{1}{4}$ " about the middle of the heart. This allows for an extra $\frac{1}{4}$ " gap for the pocket.

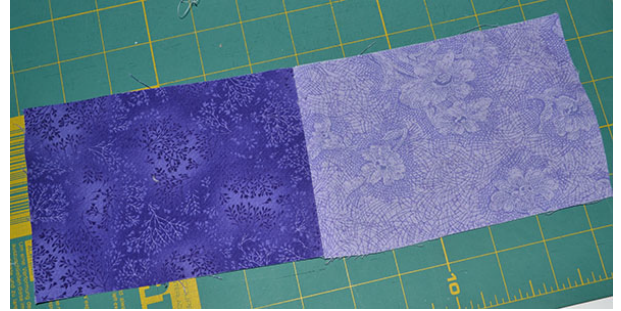


Press the seam allowance towards the left side of the heart.



To create the facing place one fabric A 6" x 4" rectangle right sides together with one fabric D 6" x 4" rectangle to create the facing. Sew together on one 4" end using a 1/4" seam allowance. Press seam towards fabric D.

Fold one long edge under 1/4" and stitch to finish the edge.

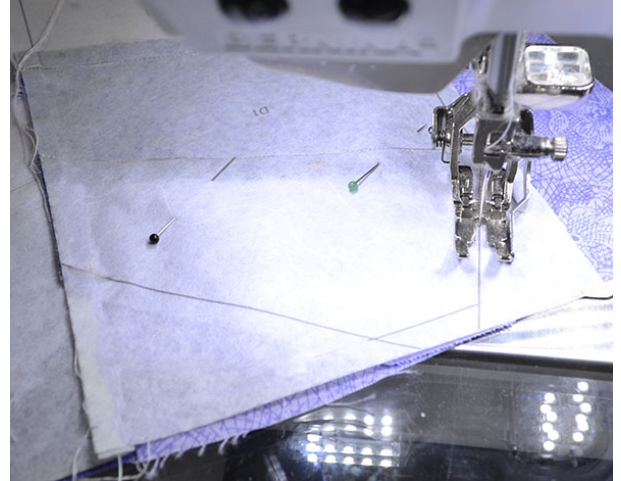


Place the facing right sides together with the top of the heart, matching dark to dark and light to light. Align the top of the facing with the top edge of the heart and the foundation. Pin in place.

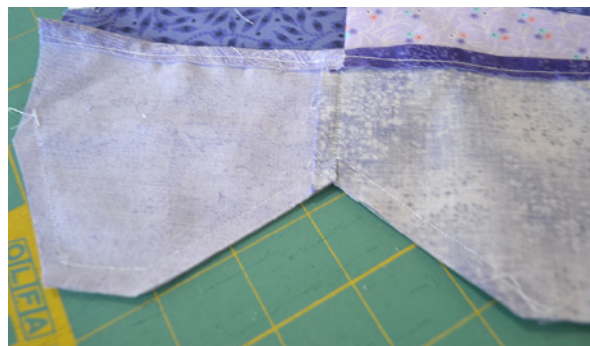


Turn the block over so the foundation is facing up. Starting at one side, stitch along the seam line at the top of the heart, pivoting at the points, across to the other side. Backstitch at the start and the stop.

NOTE: The top of the heart has a 3/8" seam allowance to allow the pocket to be below the top seam when the block is sewn to the borders.

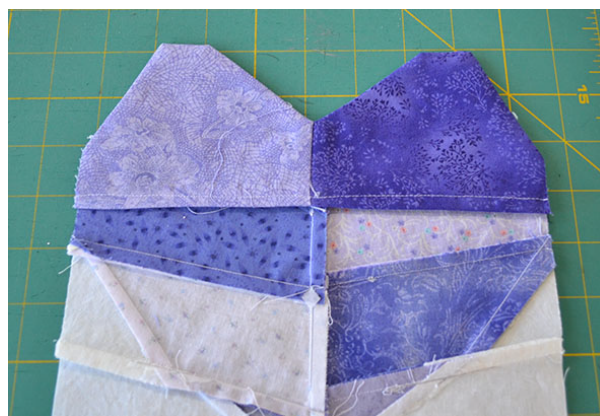


Trim the facing $\frac{1}{4}$ " from the sewn edge. Clip the inner point at the center. Make sure the clip does not go through the stitched line.



Turn the facing right side out. Poke out the corners. Press carefully.

NOTE: Do any decorative stitching at this time on the top half of the heart to match all other planned quilting. Turn the block right side up and stitch a design as desired on sections A and D. If the plans will be to meander on the mini-quilt, simulate the stitching on sections A and D. Sample shown has no extra stitching.



Place the wrong side of the heart on top of the right side of the fabric G 8-3/4" background square, aligning the raw edges on the sides and bottom. Pin the layers together. Baste the edges together using a $\frac{1}{8}$ " seam allowance.



Stitch between sections A/D and B/E across the block. Stitch the top of the heart on the outer edges on both section A and section D. See dashed line on the photo for placement.

This creates the pocket.



Fold the piping strip in half lengthwise, wrong sides together. Press. Align the raw edges of the piping strips with the raw edges of the side of the block. Stitch using a $\frac{1}{4}$ " seam allowance.

Repeat this step with the top and bottom piping strips. Be careful to keep the top edge of the heart out of the stitching.



Place the two 2" x 8- $\frac{3}{4}$ " border rectangles right sides together on the sides of the block. Align the raw edges. Stitch using a $\frac{1}{4}$ " seam allowance. Press the seams toward the border rectangles.



Repeat this step with the top and bottom border rectangles. Be careful not to catch the top of the heart in the stitching.



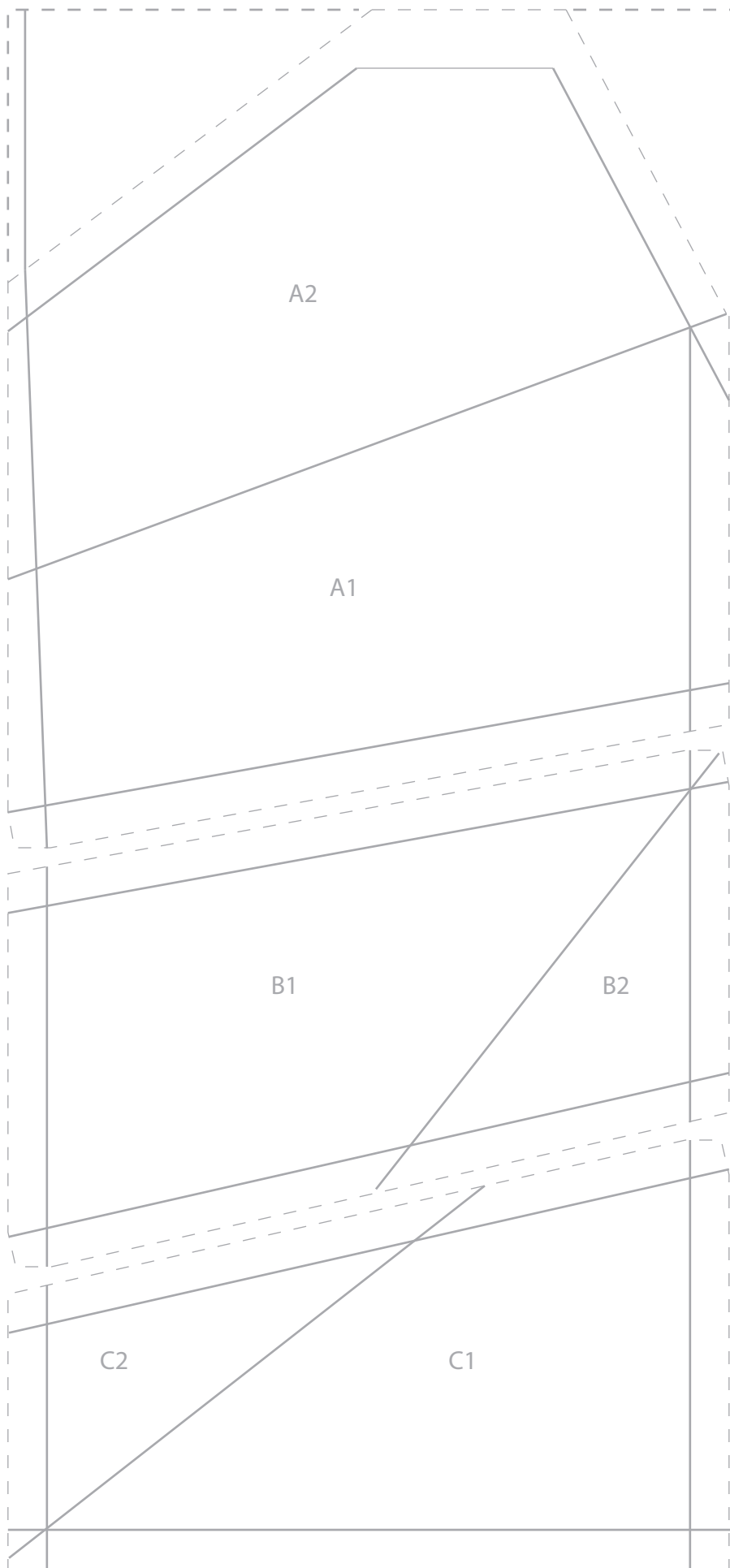
Place the batting on the wrong side of the 14" square of backing fabric.

Place the wrong side of the mini-quilt on the batting. Pin all layers together. Quilt as desired but make sure that the top half of the heart is not quilted or it will close the pocket. Pull the top half of the heart out of the way in order to quilt the top of the block partially underneath it to secure the layers behind the pocket.



To create the hanging sleeve, turn under $\frac{1}{4}$ " on the short ends of the 2" x 11 $\frac{1}{2}$ " rectangle. Stitch to secure. Fold the hanging sleeve in half lengthwise with wrong sides together. Press. Center and align the raw edges of the hanging sleeve with the raw edge of the top of the mini-quilt on the back. Baste using a $\frac{1}{4}$ " seam allowance.

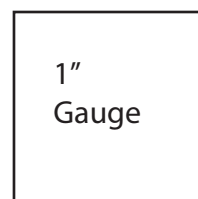
Make binding. Bind quilt. Hand stitch the fold of the hanging sleeve to the back of the quilt, being careful not to go through to the front of the mini-quilt.



Pocketful of Love Heart Template Left Side

Cut the Stitch-N-Tear® Lite into 8½" sheets. Press flat with iron. Set printer to 100%. Check gauge. Print one of each template.

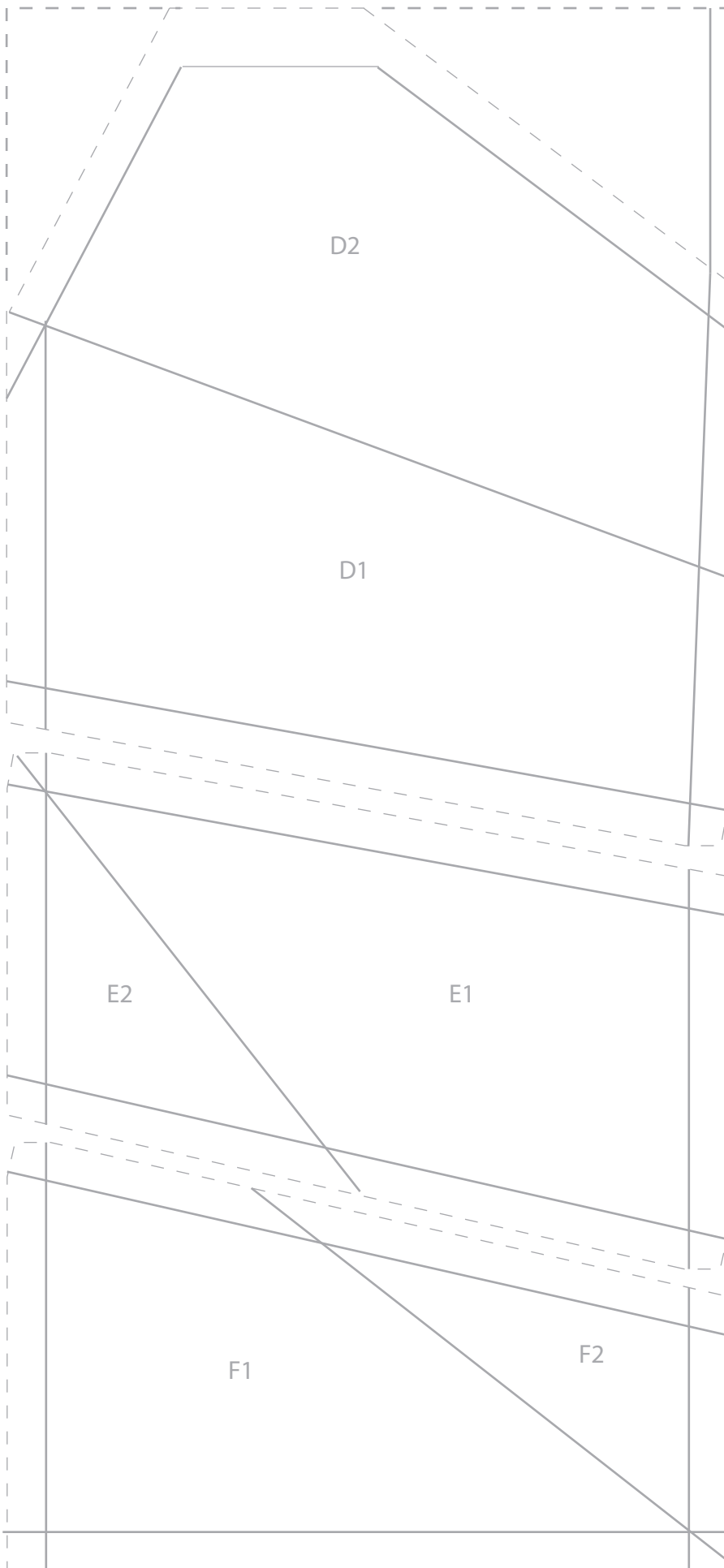
NOTE: All printable foundation sheets have been preset to print at a lighter tone (40% grayscale) to avoid any ink transfer from the Stitch-N-Tear® Lite to fabric if moistened.



Pocketful of Love Heart Template Right Side

Cut the Stitch-N-Tear® Lite into 8½" sheets. Press flat with iron. Set printer to 100%. Check gauge. Print one of each template.

NOTE: All printable foundation sheets have been preset to print at a lighter tone (40% grayscale) to avoid any ink transfer from the Stitch-N-Tear® Lite to fabric if moistened.



1"
Gauge