

Back-Basting Beautiful Circles

By Alexandra Henry

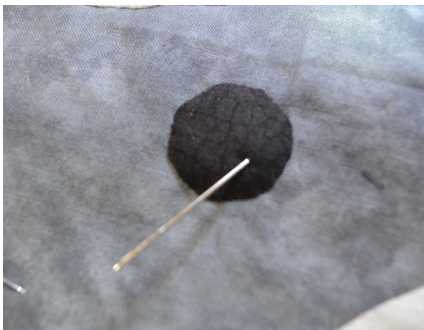
Many quilters have trouble creating beautiful circles when sewing applique. Using back-basting for applique will make sewing circles easier. Prepare the surface the same as for regular applique. Place the fabric circle on the background block and baste down. Turn the fabric to the right side and start the applique. What makes circles stay round in back basting is checking each time before you pull the needle through. Insert the needle exactly next to where the thread is coming up, travel on the back and insert to come back to the front side. Stop and check that both places where the needle pierces the fabric is on the drawn circle line. Pull the stitch through to the front and start the next stitch. Repeat checking each time. If the stitch is not on the line, remove the needle and try again. Stop stitching when you are 90% around the circle to leave an opening for stuffing. See photo below.



Using a chopstick or toothpick, push a small amount of Pellon® Perfect Loft™ Cluster Fiber Fill into the opening. Fill the space under the circle as desired. After filling the circle, applique the last 10% of the opening closed.



Insert the sharp end of a thin chenille needle into the circle applique. Wiggle the fiber fill around distributing it evenly through the circle. Move the needle around to various places to move the fiber fill. Be careful not to tear the circle fabric.



A Finished Stuffed Circle