

AR9000 floor stand cabinet-single door

AR9000 floor stand cabinet-double door

AR9000 floor stand cabinet-single door

Standard Configuration

Paint finish epoxy polyester powder coating textured finish Color:RAL 7032 RAL 7035 Profile:9-fold profile
 Material: cold rolling steel Thickness:front door:2.0mm,rear panel:1.5mm Protection degree:IP55
 Mounting plate: zinc coated 2.5mm Impact resistance: IK10

Supply Include

Front door with Reinforcing frame,hinges and MS821 lock system,9 folded profiles 4pcs/set,rear panel,mounting plate & 4 mounting plate supports,4 lifting eyebolts,top cover,removable cable gland plate
 Plinth to be offered separately(See Page 22)



Model	Dimension(mm)		
	W	H	D
AR9 146/4	600	1400	400
AR9 146/6	600	1400	600
AR9 146/8	600	1400	800
AR9 148/4	800	1400	400
AR9 148/6	800	1400	600
AR9 148/8	800	1400	800
AR9 166/6	600	1600	600
AR9 166/8	600	1600	800
AR9 168/6	800	1600	600
AR9 168/8	800	1600	800
AR9 186/4	600	1800	400
AR9 186/5	600	1800	500
AR9 186/6	600	1800	600
AR9 186/8	600	1800	800
AR9 188/4	800	1800	400
AR9 188/5	800	1800	500
AR9 188/6	800	1800	600
AR9 1810/4	1000	1800	400
AR9 1810/5	1000	1800	500
AR9 1810/6	1000	1800	600
AR9 203/5	300	2000	500
AR9 203/6	300	2000	600

Model	Dimension(mm)		
	W	H	D
AR9 203/8	300	2000	800
AR9 204/5	400	2000	500
AR9 204/6	400	2000	600
AR9 206/4	600	2000	400
AR9 206/5	600	2000	500
AR9 206/6	600	2000	600
AR9 206/8	600	2000	800
AR9 208/4	800	2000	400
AR9 208/5	800	2000	500
AR9 208/6	800	2000	600
AR9 208/8	800	2000	800
AR9 2010/4	1000	2000	400
AR9 2010/5	1000	2000	500
AR9 2010/6	1000	2000	600
AR9 2010/8	1000	2000	800
AR9 2012/4	1200	2000	400
AR9 226/8	600	2200	800
AR9 228/6	800	2200	600
AR9 228/8	800	2200	800
AR9 2210/6	1000	2200	600
AR9 2210/8	1000	2200	800

AR9000 floor stand cabinet-double door



Standard Configuration

Paint finish epoxy polyester powder coating textured finish
 Color:RAL 7032 RAL 7035 Profile:9-fold profile
 Material: cold rolling steel Thickness:front door:2.0mm,rear panel:1.5mm
 Protection degree:IP55 Mounting plate: zinc coated 2.5mm
 Impact resistance: IK10

Supply Include

Front door with Reinforcing frame,hinges and MS821 lock system,9 folded profiles 4pcs/set,rear panel,mounting plate & 4 mounting plate supports,4 lifting eyebolts,top cover,removable cable gland plate

Plinth to be offered separately(See Page 22)

Model	Dimension(mm)		
	W	H	D
AR9 1810/4D	1000	1800	400
AR9 1810/5D	1000	1800	500
AR9 1810/6D	1000	1800	600
AR9 1812/4D	1200	1800	400
AR9 1812/5D	1200	1800	500
AR9 1812/6D	1200	1800	600
AR9 2010/4D	1000	2000	400
AR9 2010/5D	1000	2000	500
AR9 2010/6D	1000	2000	600

Model	Dimension(mm)		
	W	H	D
AR9 2010/8D	1000	2000	800
AR9 2012/4D	1200	2000	400
AR9 2012/5D	1200	2000	500
AR9 2012/6D	1200	2000	600
AR9 2012/8D	1200	2000	800
AR9 2210/6D	1000	2200	600
AR9 2210/8D	1000	2200	800
AR9 2212/6D	1200	2200	600
AR9 2212/8D	1200	2200	800

more size to be request to the clients

AR9000K floor stand cabinet
AR9000K un-assembled cabinet
AR9000K knock-down cabinet

		9-FOLDED PROFILES	TOP COVER & BOTTOM	FRONT DOOR BACK PANEL	FRONT DOOR	BACK PANEL	MOUNTING PLATE	SIDE PANELS
MODEL	SIZE(W H D) mm	9-FOLDED PROFILES	TOP COVER & BOTTOM	FRONT DOOR BACK PANEL	FRONT DOOR	BACK PANEL	MOUNTING PLATE	SIDE PANELS
AR9 164/4K	400X1600X400	F16	TCB44	FBD164	FD164	BD164	MP164	ARSP164
AR9 164/5K	400X1600X500	F16	TCB45	FBD164	FD164	BD164	MP164	ARSP165
AR9 164/6K	400X1600X600	F16	TCB46	FBD164	FD164	BD164	MP164	ARSP166
AR9 166/4K	600X1600X400	F16	TCB64	FBD166	FD166	BD166	MP166	ARSP164
AR9 166/5K	600X1600X500	F16	TCB65	FBD166	FD166	BD166	MP166	ARSP165
AR9 166/6K	600X1600X600	F16	TCB66	FBD166	FD166	BD166	MP166	ARSP166
AR9 168/4K	800X1600X400	F16	TCB84	FBD168	FD168	BD168	MP168	ARSP164
AR9 168/5K	800X1600X500	F16	TCB85	FBD168	FD168	BD168	MP168	ARSP165
AR9 168/6K	800X1600X600	F16	TCB86	FBD168	FD168	BD168	MP168	ARSP166
AR9 184/4K	400X1800X400	F18	TCB44	FBD184	FD184	BD184	MP184	ARSP184
AR9 184/5K	400X1800X500	F18	TCB45	FBD184	FD184	BD184	MP184	ARSP185
AR9 184/6K	400X1800X600	F18	TCB46	FBD184	FD184	BD184	MP184	ARSP186
AR9 186/4K	600X1800X400	F18	TCB64	FBD186	FD186	BD186	MP186	ARSP184
AR9 186/5K	600X1800X500	F18	TCB65	FBD186	FD186	BD186	MP186	ARSP185
AR9 186/6K	600X1800X600	F18	TCB66	FBD186	FD186	BD186	MP186	ARSP186
AR9 188/4K	800X1800X400	F18	TCB84	FBD188	FD188	BD188	MP188	ARSP184
AR9 188/5K	800X1800X500	F18	TCB85	FBD188	FD188	BD188	MP188	ARSP185
AR9 188/6K	800X1800X600	F18	TCB86	FBD188	FD188	BD188	MP188	ARSP186
AR9 188/8K	800X1800X800	F18	TCB88	FBD188	FD188	BD188	MP188	ARSP188
AR9 1810/4K	1000X1800X400	F18	TCB104	FBD1810	FD1810	BD1810	MP1810	ARSP184
AR9 1810/5K	1000X1800X500	F18	TCB105	FBD1810	FD1810	BD1810	MP1810	ARSP185
AR9 1810/6K	1000X1800X600	F18	TCB106	FBD1810	FD1810	BD1810	MP1810	ARSP186
AR9 204/4K	400X2000X400	F20	TCB44	FBD204	FD204	BD204	MP204	ARSP204
AR9 204/5K	400X2000X500	F20	TCB45	FBD204	FD204	BD204	MP204	ARSP205
AR9 204/6K	400X2000X600	F20	TCB46	FBD204	FD204	BD204	MP204	ARSP206
AR9 206/4K	600X2000X400	F20	TCB64	FBD206	FD206	BD206	MP206	ARSP204
AR9 206/5K	600X2000X500	F20	TCB65	FBD206	FD206	BD206	MP206	ARSP205
AR9 206/6K	600X2000X600	F20	TCB66	FBD206	FD206	BD206	MP206	ARSP206
AR9 206/8K	600X2000X800	F20	TCB68	FBD206	FD206	BD206	MP206	ARSP208
AR9 208/4K	800X2000X400	F20	TCB84	FBD208	FD208	BD208	MP208	ARSP204
AR9 208/5K	800X2000X500	F20	TCB85	FBD208	FD208	BD208	MP208	ARSP205
AR9 208/6K	800X2000X600	F20	TCB86	FBD208	FD208	BD208	MP208	ARSP206
AR9 208/8K	800X2000X800	F20	TCB88	FBD208	FD208	BD208	MP208	ARSP208
AR9 2010/4K	1000X2000X400	F20	TCB104	FBD2010	FD2010	BD2010	MP2010	ARSP204
AR9 2010/5K	1000X2000X500	F20	TCB105	FBD2010	FD2010	BD2010	MP2010	ARSP205
AR9 2010/6K	1000X2000X600	F20	TCB106	FBD2010	FD2010	BD2010	MP2010	ARSP206
AR9 226/4K	600X2200X400	F22	TCB64	FBD226	FD226	BD226	MP226	ARSP224
AR9 226/5K	600X2200X500	F22	TCB65	FBD226	FD226	BD226	MP226	ARSP225
AR9 226/6K	600X2200X600	F22	TCB66	FBD226	FD226	BD226	MP226	ARSP226
AR9 226/8K	600X2200X800	F22	TCB68	FBD226	FD226	BD226	MP226	ARSP228
AR9 228/4K	800X2200X400	F22	TCB84	FBD228	FD228	BD228	MP228	ARSP224
AR9 228/5K	800X2200X500	F22	TCB85	FBD228	FD228	BD228	MP228	ARSP225
AR9 228/6K	800X2200X600	F22	TCB86	FBD228	FD228	BD228	MP228	ARSP226
AR9 2210/4K	1000X2200X400	F22	TCB104	FBD2210	FD2210	BD2210	MP2210	ARSP224
AR9 2210/5K	1000X2200X500	F22	TCB105	FBD2210	FD2210	BD2210	MP2210	ARSP225
AR9 2210/6K	1000X2200X600	F22	TCB106	FBD2210	FD2210	BD2210	MP2210	ARSP226

AR9000K floor stand cabinet

AR9000K un-assembled cabinet

AR9000K knock -down cabinet

DOUBLE DOOR MODEL	SIZE(W H D) mm	9-FOLDED PROFILES	TOP COVER & BOTTOM	FRONT DOOR BACK PANEL	FRONT DOOR	BACK PANEL	MOUNTING PLATE	SIDE PANELS
AR9D 1610/4K	1000X1600X400	F16/D	TCB104/D	FBD1610/D	FD1610/D	BD1610	MP1610	ARSP164
AR9D 1610/5K	1000X1600X500	F16/D	TCB105/D	FBD1610/D	FD1610/D	BD1610	MP1610	ARSP165
AR9D 1612/4K	1200X1600X400	F16/D	TCB124/D	FBD1612/D	FD1612/D	BD1612	MP1612	ARSP164
AR9D 1612/5K	1200X1600X500	F16/D	TCB125/D	FBD1612/D	FD1612/D	BD1612	MP1612	ARSP165
AR9D 1810/4K	1000X1800X400	F18/D	TCB104/D	FBD1810/D	FD1810/D	BD1810	MP1810	ARSP184
AR9D 1810/5K	1000X1800X500	F18/D	TCB105/D	FBD1810/D	FD1810/D	BD1810	MP1810	ARSP185
AR9D 1810/6K	1000X1800X600	F18/D	TCB106/D	FBD1810/D	FD1810/D	BD1810	MP1810	ARSP186
AR9D 1812/4K	1200X1800X400	F18/D	TCB124/D	FBD1812/D	FD1812/D	BD1812	MP1812	ARSP184
AR9D 1812/5K	1200X1800X500	F18/D	TCB125/D	FBD1812/D	FD1812/D	BD1812	MP1812	ARSP185
AR9D 1812/6K	1200X1800X600	F18/D	TCB126/D	FBD1812/D	FD1812/D	BD1812	MP1812	ARSP186
AR9D 2010/4K	1000X2000X400	F20/D	TCB104/D	FBD2010/D	FD2010/D	BD2010	MP2010	ARSP204
AR9D 2010/5K	1000X2000X500	F20/D	TCB105/D	FBD2010/D	FD2010/D	BD2010	MP2010	ARSP205
AR9D 2010/6K	1000X2000X600	F20/D	TCB106/D	FBD2010/D	FD2010/D	BD2010	MP2010	ARSP206
AR9D 2012/4K	1200X2000X400	F20/D	TCB124/D	FBD2012/D	FD2012/D	BD2012	MP2012	ARSP204
AR9D 2012/5K	1200X2000X500	F20/D	TCB125/D	FBD2012/D	FD2012/D	BD2012	MP2012	ARSP205
AR9D 2012/6K	1200X2000X600	F20/D	TCB126/D	FBD2012/D	FD2012/D	BD2012	MP2012	ARSP206
AR9D 2210/5K	1000X2200X500	F22/D	TCB105/D	FBD2210/D	FD2210/D	BD2210	MP2210	ARSP225
AR9D 2210/6K	1000X2200X600	F22/D	TCB106/D	FBD2210/D	FD2210/D	BD2210	MP2210	ARSP226
AR9D 2212/5K	1200X2200X500	F22/D	TCB125/D	FBD2212/D	FD2212/D	BD2212	MP2212	ARSP225
AR9D 2212/6K	1200X2200X600	F22/D	TCB126/D	FBD2212/D	FD2212/D	BD2212	MP2212	ARSP226

AR9000K floor stand cabinet

Standard Configuration

AR9K metal floor stand cabinets comprise a 9-folded profile structure, un-welded at the top and bottom of the frame, with removable screws in vertical profiles for strength and versatility with the cabinets. Thermosetting epoxy polyester powder coating in textured RAL 7035 or RAL7032

Supply Include

9-folded profiles 4pcs/set (model:F):hinged uprights, panel mounts and locking elements assembled. Top cover and base (Model: TCB):welded top frame ,welded base,mounting plate fixing support. Back panel and front door (Model: FBD):plain door with lock, plain back panel. Galvanised mounting Plate(Model: MP) Side panels(Model: ARSP):2pcs side panels with accessories



Toughened glass door for AR9000 cabinet

Color: RAL 7032 or RAL 7035 Protection degree: IP 55
Material: toughened glass 5.0mm Impact resistance: IK10
ARPX toughened glass door supply include:
Toughened glass door thickness 5.0mm and fixing accessories
lock system, hinges
Note: **not include cabinet**

glass door Model	For cabinet size(mm)	
	W	H
ARPX 126	600	1200
ARPX 128	800	1200
ARPX 146	600	1400
ARPX 148	800	1400
ARPX 166	600	1600
ARPX 168	800	1600
ARPX 186	600	1800

glass door Model	For cabinet size(mm)	
	W	H
ARPX 188	800	1800
ARPX 1810	1000	1800
ARPX 206	600	2000
ARPX 208	800	2000
ARPX 2010	1000	2000
ARPX 226	600	2200
ARPX 228	800	2200



Inner door for AR9000 cabinet

Color: RAL 7032 or RAL 7035
Material: cold steel 2.0mm thickness Impact resistance: IK10
ARID inner door supply include:
inner door and fixing accessories, lock system, hinges
Note: **not include cabinet**

Inner door Model	For cabinet size(mm)	
	W	H
ARID 126	600	1200
ARID 128	800	1200
ARID 146	600	1400
ARID 148	800	1400
ARID 166	600	1600
ARID 168	800	1600
ARID 186	600	1800

Inner door Model	For cabinet size(mm)	
	W	H
ARID 188	800	1800
ARID 1810	1000	1800
ARID 206	600	2000
ARID 208	800	2000
ARID 2010	1000	2000
ARID 226	600	2200
ARID 228	800	2200

more size to be request to the client

AR8000 one piece floor stand cabinet

AR8000 one piece floor stand cabinet

Material: cold steel rolling sheet

Protection degree:IP 55, Impact resistance IK10

Color:RAL7032 RAL7035,paint finish epoxy polyester powder coating textured finish

Thickness of the sheet steel:Front door: 2.0mm / enclosure body 1.5mm/bottom cable plate 1.5mm/galvanised mounting plate: 2.5mm



Supply Include:

Ar8 structure enclosure body,door complete with MS821 locking system and hinges ,bottom with removable cable entry,4 lifting eyebolts
Plinth to be offered separately(See Page 22)

Model	W × H × D mm	no. of door
AR8 128/3	800 X 1200 X 300	1
AR8 146/3	600 X 1400 X 300	1
AR8 146/4	600 X 1400 X 400	1
AR8 148/3	800 X 1400 X 300	1
AR8 148/4	800 X 1400 X 400	1
AR8 166/3	600 X 1600 X 300	1
AR8 166/4	600 X 1600 X 400	1
AR8 168/3	800 X 1600 X 300	1
AR8 168/4	800 X 1600 X 400	1
AR8 186/3	600 X 1800 X 300	1
AR8 186/4	600 X 1800 X 400	1
AR8 186/5	600 X 1800 X 500	1
AR8 186/6	600 X 1800 X 600	1

Model	W × H × D mm	no. of door
AR8 188/3	800 X 1800 X 300	1
AR8 188/4	800 X 1800 X 400	1
AR8 188/5	800 X 1800 X 500	1
AR8 188/6	800 X 1800 X 600	1
AR8 206/3	600 X 2000 X 300	1
AR8 206/4	600 X 2000 X 400	1
AR8 206/5	600 X 2000 X 500	1
AR8 206/6	600 X 2000 X 600	1
AR8 208/3	800 X 2000 X 300	1
AR8 208/4	800 X 2000 X 400	1
AR8 208/5	800 X 2000 X 500	1
AR8 208/6	800 X 2000 X 600	1

AR8000/D one piece floor stand cabinet-double door

Material: cold steel rolling sheet

Protection degree:IP 55, Impact resistance IK10

Color:RAL7032 RAL7035,paint finish epoxy polyester powder coating textured finish

Thickness of the sheet steel:Front door: 2.0mm/ enclosure body 1.5mm/bottom cable plate 1.5mm/
galvanised mounting plate: 2.5mm



Supply Include:

Ar8 structure enclosure body,door complete with MS821 locking system and hinges ,bottom with removable cable entry,4 lifting eyebolts
Plinth to be offered separately(See Page 22)

Model	W × H × D mm	no. of door
AR8 1010/3D	1000 X 1000 X 300	2
AR8 1210/3D	1000 X 1200 X 300	2
AR8 1212/4D	1200 X 1200 X 400	2
AR8 1410/4D	1000 X 1400 X 400	2
AR8 1412/4D	1200 X 1400 X 400	2
AR8 1610/3D	1000 X 1600 X 300	2
AR8 1610/4D	1000 X 1600 X 400	2
AR8 1612/3D	1200 X 1600 X 300	2
AR8 1612/4D	1200 X 1600 X 400	2
AR8 1810/4D	1000 X 1800 X 400	2
AR8 1810/5D	1000 X 1800 X 500	2
AR8 1812/4D	1200 X 1800 X 400	2

Model	W × H × D mm	no. of door
AR8 1812/5D	1200 X 1800 X 500	2
AR8 1816/4D	1600 X 1800 X 400	2
AR8 1816/5D	1600 X 1800 X 500	2
AR8 2010/4D	1000 X 2000 X 400	2
AR8 2010/5D	1000 X 2000 X 500	2
AR8 2012/4D	1200 X 2000 X 400	2
AR8 2012/5D	1200 X 2000 X 500	2
AR8 2012/6D	1200 X 2000 X 600	2
AR8 2016/4D	1600 X 2000 X 400	2
AR8 2016/5D	1600 X 2000 X 500	2
AR8 2016/6D	1600 X 2000 X 600	2

more size to be request to the clients



AR8000P one piece floor stand cabinet with toughened glass

AR8000P one piece floor stand cabinet with toughened glass

Material: cold steel rolling sheet

Protection degree:IP 55, Impact resistance IK10

Color:RAL7032 RAL7035,paint finish epoxy polyester powder coating textured finish

Thickness of the sheet steel:Front door: 2.0mm/ enclosure body 1.5mm/bottom cable plate 1.5mm/
galvanised mounting plate: 2.5mm/toughened glass 5.0mm



Supply Include:

AR8P structure enclosure body,door complete with MS821 locking system and hinges with toughened glass,bottom with removable cable entry,4 lifting eyebolts
Plinth to be offered separately(See Page 22)

Model	W × H × D mm	no. of door
AR8P 128/3	800 X 1200 X 300	1
AR8P 146/3	600 X 1400 X 300	1
AR8P 146/4	600 X 1400 X 400	1
AR8P 148/3	800 X 1400 X 300	1
AR8P 148/4	800 X 1400 X 400	1
AR8P 166/3	600 X 1600 X 300	1
AR8P 166/4	600 X 1600 X 400	1
AR8P 168/3	800 X 1600 X 300	1
AR8P 168/4	800 X 1600 X 400	1
AR8P 186/3	600 X 1800 X 300	1
AR8P 186/4	600 X 1800 X 400	1
AR8P 186/5	600 X 1800 X 500	1
AR8P 186/6	600 X 1800 X 600	1

Model	W × H × D mm	no. of door
AR8P 188/3	800 X 1800 X 300	1
AR8P 188/4	800 X 1800 X 400	1
AR8P 188/5	800 X 1800 X 500	1
AR8P 188/6	800 X 1800 X 600	1
AR8P 206/3	600 X 2000 X 300	1
AR8P 206/4	600 X 2000 X 400	1
AR8P 206/5	600 X 2000 X 500	1
AR8P 206/6	600 X 2000 X 600	1
AR8P 208/3	800 X 2000 X 300	1
AR8P 208/4	800 X 2000 X 400	1
AR8P 208/5	800 X 2000 X 500	1
AR8P 208/6	800 X 2000 X 600	1

more size to be request to the clients



One piece enclosure

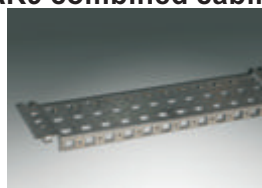


Cable gland plate



Hinges

AR9 combined cabinet



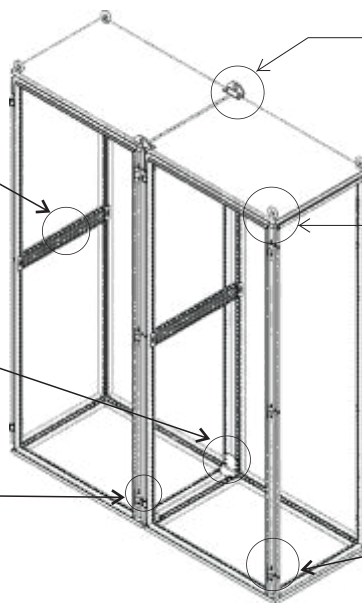
WD Rail



WA 020



WA 010



WI300



WA 065



TJ-CH130

Panels, Plate of AR9, AR8 floor stand cabinet



Cabinet with panels or plates

Panels or plates are to be ordered separately to the clients special requirement
Weldon standard plates consist of: surface plate, flush plate, blank plate, punched plate

Note:
To fix the panels or plates on the cabinets by using H Rails

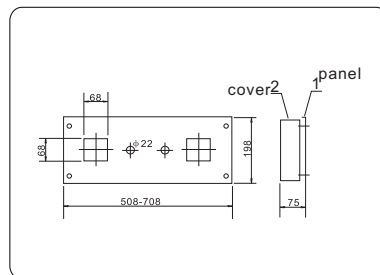
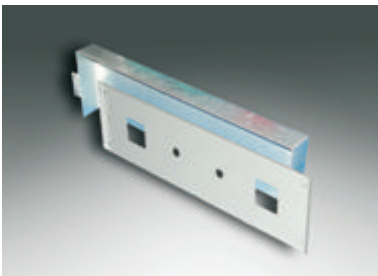


Punched front panel-Component panel

Flush Panel
Panel For Modular Component

Note:
To fix the panels or plates on the cabinets by using H Rails

Flush panel

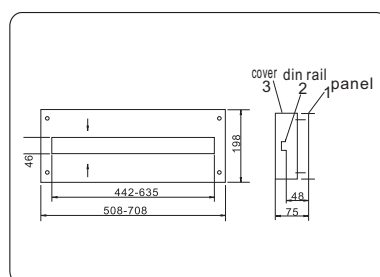
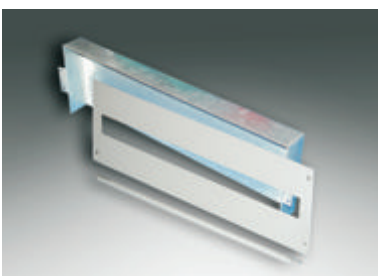


Manufactured in 1.5mm sheet steel
Supply include: back panel, punched front cover, closed with fixing accessories
Package: 1 piece with accessories

Model	Cabinet Width	Ref	Description	Pcs
MDP03 102F	600	1	PANEL	1
MDP04 102	600	2	COVER	1
MDP03 202F	800	1	PANEL	1
MDP04 202	800	2	COVER	1

Note:
To fix the panels or plates on the cabinets by using H Rails

Panel for modular component



Manufactured in 1.5mm sheet steel
Supply include: back panel, punched front cover, DIN rail, closed with fixing accessories
Package: 1 piece with accessories

Model	Cabinet Width	Ref	Description	Pcs
MDP02 102F	600	1	PANEL	1
MDP02 102F	600	2	DIN RAIL 1×25P	1
MDP04 102	600	3	COVER	1
MDP02 202F	800	1	PANEL	1
MDP02 202F	800	2	DIN RAIL 1×25P	1
MDP04 202	800	3	COVER	1

Note:
To fix the panels or plates on the cabinets by using H Rails



Panel,plate for AR9000 modular cabinet

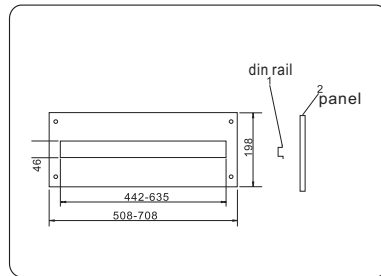


DIN Panel for modular components

Manufactured in 1.5mm sheet steel.
Supplied complete with zinc coated DIN rail
and fixing accessories with screws and captive bush

Note:
To fix the panels or plates on the cabinets by using H Rails

DIN panel

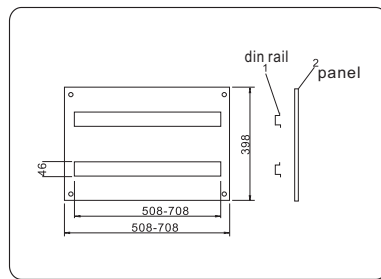


Manufactured in 1.5mm sheet steel.
Supply include: punched front cover,zinc-coated
DIN rail and fixing accessories
Pack: 1 piece

Model	cabinet width(mm)	Panel(mm)	
		A	B
MDP604F	600	508	400
MDP606F			600
MDP804F	800	708	400
MDP806F			600

Note:
To fix the panels or plates on the cabinets by using H Rails

DIN panel

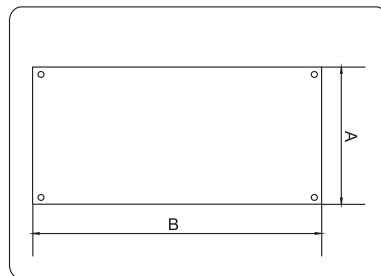
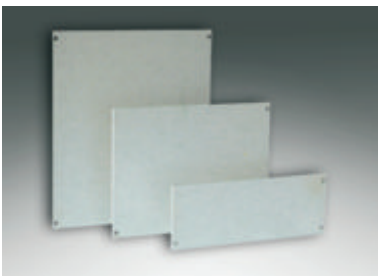


Manufactured in 1.5mm sheet steel.
Supply include: punched front cover,zinc-coated
DIN rail 2pcs and fixing accessories
Pack: 1 piece

Model	cabinet width(mm)	Ref	Description	Pcs
MDP02 104F	600	Panel 2x25P		
		1	Din rail	1
		2	Panel	1
MDP02 204F	800	Panel 3x36P		
		1	Din rail	1
		2	Panel	1

Note:
To fix the panels or plates on the cabinets by using H Rails

Surface plate

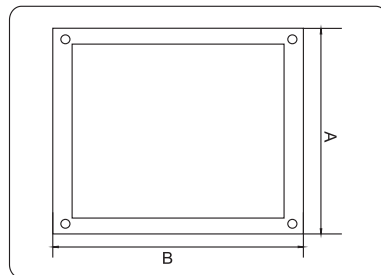


Supply Include:Blank surface plate supplied
with fixing accessories
Pack:1 piece

Model	cabinet width(mm)	Surface plate	
		B	A
MDP602	600	508	200
MDP603			300
MDP604			400
MDP606	800	708	600
MDP802			200
MDP803			300
MDP804		400	
MDP806		600	

Note:
To fix the panels or plates on the cabinets by using H Rails

Flush plate



Supply Include:Blank flush plate supplied
with fixing accessories
Pack:1 piece

Model	cabinet width(mm)	Panel(mm)	
		B	A
MDP604F	600	508	400
MDP606F			600
MDP804F	800	708	400
MDP806F			600

Note:
To fix the panels or plates on the cabinets by using H Rails

Multiple door of AR9,AR8 floor stand cabinet



Seal cover

Multiple door :Model MT,MTP

Clamp board

After you purchased AR9000, AR8000 cabinets, multiple door,clamp boards,seal cover are your choice again

Multiple door

Supply include:In 1.5mm sheet steel complete with gasket and locking system, hinge

MT: without plexiglass door

MTP:with plexiglass door

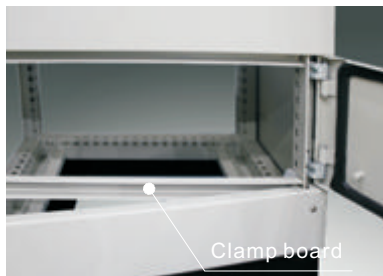


For cabinet width,height

Model	Model	Width(mm)	Height(mm)
MTP602	MT602	600	200
MTP603	MT603	600	300
MTP604	MT604	600	400
MTP605	MT605	600	500
MTP606	MT606	600	600
MTP608	MT608	600	800
MTP609	MT609	600	900
MTP6010	MT6010	600	1000
MTP802	MT802	800	200
MTP803	MT803	800	300
MTP804	MT804	800	400
MTP805	MT805	800	500
MTP806	MT806	800	600
MTP808	MT808	800	800
MTP809	MT809	800	900
MTP8010	MT8010	800	1000

After you purchased multiple door,clamp boards & seal cover must be your choice again

Clamp board



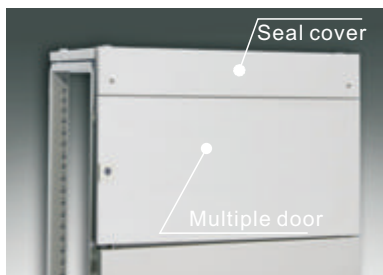
Clamp board



To fix multiple door,by using clamp board,
Material:is made up of 1.5mm, sheet steel
with fixing accessories
Supply include: 5pcs clamp boards & its
fixing accessories

Model	Width(mm)	Pack
MT600	600	5PCS/SET
MT800	800	5PCS/SET

Seal cover



Seal cover

Multiple door



To fix multiple door ,by using seal cover to
have nice look
Material:In 1.5mm sheet steel for sealing
the top& bottom of cabinet

Supply include:4pcs seal covers & its
fixing accessories
Pack:4pcs/set

Model	WXH(mm)	Pack
MT006	600x100	4PCS/SET
MT008	800x100	4PCS/SET



Rails of floor stand cabinet

H rail for blank front plate

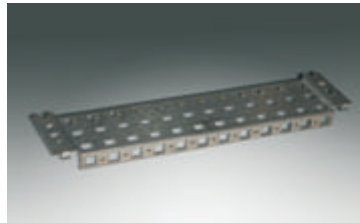
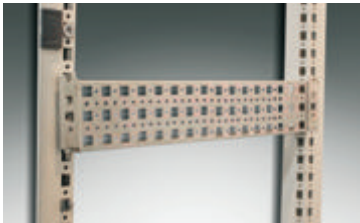
This rail is easy to fix on the cabinet height from 1400mm-2200mm, for fixing Din rail, MDP panel (surface plate/flush plate),
Material: manufactured in 1.5mm galvanised sheet steel Supply include: H rail Pack: 2 pieces



Model	For cabinet height(mm)
H1400	1400mm
H1600	1600mm
H1800	1800mm
H2000	2000mm
H2200	2200mm

WD rail, WW rail

Material: manufactured in 1.5mm galvanised sheet steel with 8pcs fixing screws M5X9mm, install on the the frame of the cabinet
Supply include: WD rail or WW rail with fixing accessories Pack: 4 pieces



Model	For depth of cabinet(mm)			
	WD400	WD500	WD600	WD800
Dimension	400	500	600	800
Pcs/set	4	4	4	4
Model	For depth of cabinet(mm)			
	WW600	WW800	WW1000	WW1200
Dimension	600	800	1000	1200
Pcs/set	4	4	4	4

Door rail

Manufactured from 1.5mm sheet steel with 2pcs fixing screws M5X9mm
Supply include: Door rail with fixing accessories pack: 1 piece



Model	for cabinet width(mm)	Single or Double door
WA470	600	single
WA670	800	single
WA870	1000	single
WA270	800	double
WA370	1000	double

WHD rail



Manufactured in 1.5mm zinc passivated sheet steel, **Perforated** Rail 23X23mm, by using angle bracket WHD001 install on the profile of cabinet

Supply include:

WHD rail with insert nut WA8 2pcs, screws M8 2pcs, angle bracket WHD001 one set (1 piece left bracket, 1 piece right bracket, 2pcs screws M5X9mm)
Pack: 12 pieces / 6 pieces from 1600mm length

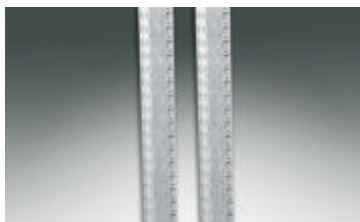
MODEL	WHD 400 (mm)	WHD 500 (mm)	WHD 600 (mm)	WHD 800 (mm)	WHD 1000 (mm)	WHD 1200 (mm)	WHD 1600 (mm)	WHD 1800 (mm)	WHD 2000 (mm)	WHD 2200 (mm)
LEGHT	295	395	495	695	895	1095	1495	1695	1895	2095
W H D	400	500	600	800	1000	1200	1600	1800	2000	2200
PCS/SET	12	12	12	12	12	12	6	6	6	6

HU Rail for 19" rack cabinet

Supply include:

For 800mm width cabinet: HU rail 4pcs with WD rail 4pcs, fixing accessorrie 8pcs

For 600mm width cabinet: HU rail 4pcs with WD rail 4pcs

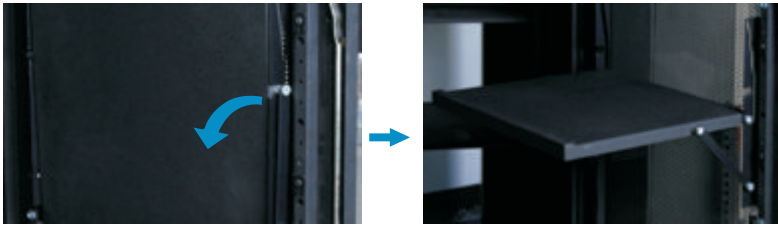


Cabinet Height(mm)	U	Packaging
HU1600	32U	4Pcs/set
HU1800	37U	4Pcs/set
HU2000	42U	4Pcs/set
HU2200	47U	4Pcs/set

Accessories of floor stand cabinet

PC pallet (Laptop pallet)

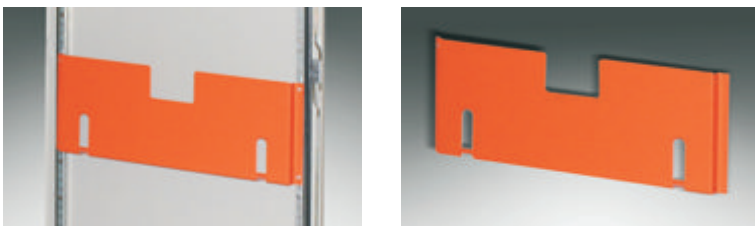
PC pallet is manufactured in 1.5mm sheet steel, fixing on the door of the cabinet to hold the laptop for easily operation
 Supply include: PC pallet with fixing accessories Pack:1 piece Carrying capacity: 30KG Max Color: RAL 6022 black



Model	W	D	Cabinet width (mm)
C44	413	400	600
C64	613	400	800

Steel plan pocket

Manufactured in 1.5mm sheet steel with 4pcs fixing screws M5X9mm Color:RAL2008 Thickness:1.5mm steel
 Supply include: steel plan pocket with fixing accessories Pack: 1 piece



Model	For cabinet Width(mm)	Size (mm)		
		W	H	D
PP400	400	255	260	90
PP500	500	355	260	90
PP600	600	455	260	90
PP800	800	655	260	90
PP900	900	755	260	90
PP1000	1000	855	260	90

A4 plastic plan pocket



Model:PP100
 Material:ABS
 Color: orange
 Supply include: A4 plastic plan pocket
 Pack:1 piece

Divide plate

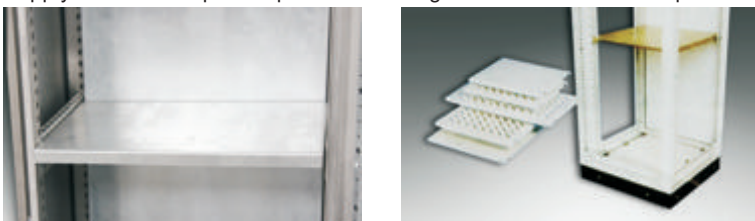
Divide plate is manufactured in 1.5mm galvanised sheet steel with 4pcs fixing screws M8X16mm, 4pcs fixing brackets by using WD rails or WHD rails to hold divide plate(WD rail/ WHD rails 4pcs/set to be offered separately)
 Supply include: Divide plate with fixing accessories Pack:1 piece



MODEL	Cabinet width(mm)	W x H (mm)
MP 64	600	492X333
MP 82	800	692X133
MP 86	800	692X533
MP 104	1000	892X333
MP 106	1000	892X533
MP 122	1200	1092X133
MP 124	1200	1092X333
MP 126	1200	1092X533

Component pallet

Manufactured in 1.5mm galvanised sheet steel, fixing by using WD rails 2pcs(WD rails to be offered separately), 4pcs fixing screws M8X16mm, Insert nut WA8 4pcs
 Two model: max carrying ability 50KG (component pallet with holes)
 max carrying ability 100KG (no holes)
 Supply include: component pallet with fixing accessories Pack:1 piece



Cabinet width	Max.weight W x D (mm)	W/T holes 50KG		W/O holes 100KG	
		Model	Model	Model	Model
600mm	300×471	MPH 604	MPH 604F		
	400×471	MPH 605	MPH 605F		
	500×471	MPH 606	MPH 606F		
800mm	300×671	MPH 804	MPH 804F		
	400×671	MPH 805	MPH 805F		
	500×671	MPH 806	MPH 806F		



Accessories of floor stand cabinet



Fan

ABS synthetic resin, fire resistant and UV-resistant, dustproof coefficient:80%.
Purchase the filter together for fan fixing

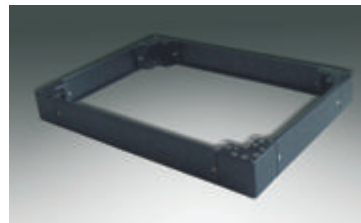
Model	The outer part	Voltage	Current	Air flow
KA1238HA2B	120×120×38mm	220~240VAC	0.13/0.11A	120/140CFM
KA1725HA2B	φ172×55mm	220~240VAC	0.13/0.12A	218/245CFM
KA2206HA2B-2P	φ220×60mm	220~240VAC	0.25/0.18A	430/490CFM
KA2509HA2B-2P	φ254×89mm	220~240VAC	0.28/0.22A	666/730CFM



Filter Purchase the fan together for filter fixing for customer choice

Model	The outer part	Efficient blast volume	level of protection	Applicable blower fan
FU-9803A	148.5×148.5×13.5mm	25.0m3/min	IP44	KA1238HA2B
FU-9804A	204×204×13.5mm	50.0m3/min	IP44	KA1725HA2B
FU-9805A	255×255×13.5mm	80.0m3/min	IP44	KA2206HA2B-2P
FU-9806A	320×320×13.5mm	120m3/min	IP44	KA2509HA2B-2P

Plinth for AR8000/AR9000 cabinet



Standard plinth:

Height=100mm(H100), Height=200mm(H200)

Material: manufactured in 2.5mm sheet steel with 8pcs fixing screws M6X16mm

paint finish: epoxy polyester powder coating textured finish
Color:RAL6022 black

Supply include: plinth with fixing accessories

Pack:1 piece

Model		Cabinet size(mm)	
H100	H200	Width	Depth
PL1 35	PL2 35	300	500
PL1 36	PL2 36	300	600
PL1 38	PL2 38	300	800
PL1 45	PL2 45	400	500
PL1 46	PL2 46	400	600
PL1 64	PL2 64	600	400
PL1 65	PL2 65	600	500
PL1 66	PL2 66	600	600

Model		Cabinet size(mm)	
H100	H200	Width	Depth
PL1 86	PL2 86	800	600
PL1 88	PL2 88	800	800
PL1 104	PL2 104	1000	400
PL1 105	PL2 105	1000	500
PL1 106	PL2 106	1000	600
PL1 108	PL2 108	1000	800
PL1 124	PL2 124	1200	400
PL1 125	PL2 125	1200	500



WA 065 ring

model: WA 065

Material:zinc-coated metal iron fixing on the top of the cabinet for lifting the cabinet more easily

Supply include: Rings

Pack:4pcs/set



Door keep

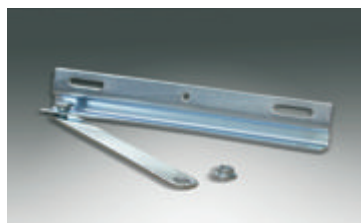
Model: DS001

Material: ABS,black color

Always keep the door in the straight level for AR8000, AR9000 cabinet

Supply include: door keep

package:1 piece



Door stop

Model: WA100

Material: Manufactured in galvanised sheet steel 1.5mm ,to keep the door in the open state for AR8000,AR9000 cabinet,when opening the doors

Supply include: door stop

Package: 1 piece

Accessories of floor stand cabinet



Baying bracket

Model:WA020

Manufactured in 1.5mm galvanised sheet steel with 32pcs fixing screws M8X8mm, For connection and combination in two cabinets

Supply include: Baying bracket with fixing accessories
Package:4pcs/set



Steel bolt anchor

Model:WA010

Material: steel iron zinc-plating, to combine or connect 2 cabinets, with inn- hexagon steel screws M6X10mm 12pcs

Supply include: steel bolt anchor with fixing accessories
package:6pcs/set



Baying bracket

Model:WA030

Material: manufactured in 1.5mm sheet steel, zinc-plating, to combine or connect 2 cabinets, with fixing screws M5X9mm 2pcs

Supply include: baying bracket with fixing accessories
Package:1pcs/set

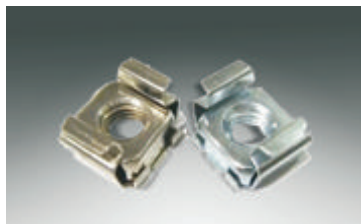


WI300 baying ring

Model:WI300

Material: galvanised sheet steel 4.0mm by baying 2 cabinets on the top of cabinet

Supply include: baying ring with 8pcs screws M12
pack: 4pcs/set with fixing accessories



Special nut-1

Model: SN-M6 OR SN-M8

Material: special designed nut use to install on AR9000 manufactured from zinc Alloy.

Supply include: special nut
Package:50pcs/bag

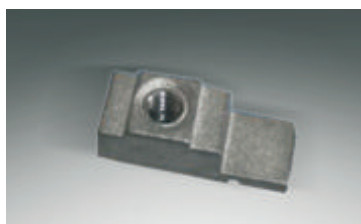


Special nut-2

Model: TSN-M6 OR TSN-M8

Material: special designed nut use to install on AR9000 manufactured from zinc Alloy.

Supply include: special nut
Package:50pcs/bag



Insert nut

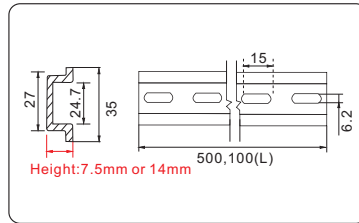
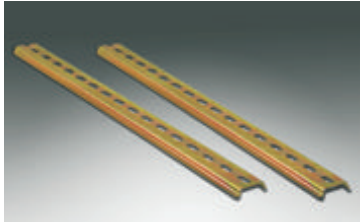
Model: WA6 OR WA8

Special designed nut use to install on AR9000 manufactured from zinc Alloy.

Package:50pcs/set



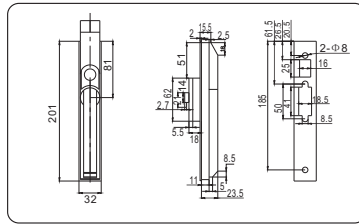
Accessories of floor stand cabinet



C35 rail

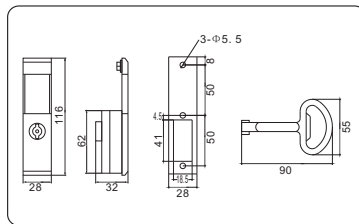
Model	Height(mm)
C7.5-2m	7.5
C14-2m	14

C35 rail is to be fixed on the cabinet to hold electronic components (circuit breaker, DIN-panel meter, etc)
 Material: rainbow colored steel sheet 1.0mm thickness, 2 metros
 Supply include: C35 rail Package: 1 piece



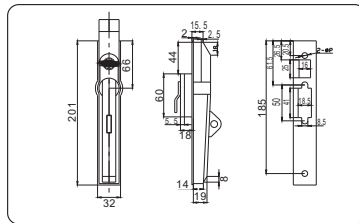
Cabinet lock

Model: MS830
 Material: ABS and iron
 For the door lock in the cabinet AR9000 or AR8000
 Supply include: 1pcs/set with lock system, key and fixing accessories
 Package: 1 piece



Cabinet lock

Model: MS 821



Cabinet lock

Model: MS 830-6P-1
 Material: ABS and iron
 For the door lock in the cabinet AR9000 or AR8000, for pad lock standard, pad lock is offered separately
 Supply include: 1pcs/set with lock system, key and fixing accessories
 Package: 1 piece



130° Door Hinge

Model: TJ-CH130
 Material: steel iron, zinc-plating, door hinge for Ar9000 or AR8000 cabinet
 Supply include: door hinge
 Package: 6pcs/set



Common screw

Model: Screw M5X10mm
 Material: Steel, zinc-plating, used for cabinet profiles, punching rail and punching material
 Supply include: screw M5 X 10mm
 Pack: 100pcs/set



Sealing rubber strip

Model: RUB001
 Material: rubber, width 15mm
 By sealing the gap between two cabinets
 Supply include: sealing rubber strip
 Package: 10 metro/roll