



License No. 800025015  
FL License # CMTL-0003  
CLIA No. 10D1094068

## Certificate of Analysis

Compliance Test

NOT YOUR MOMS

Batch # DZ-D8-05  
Batch Date: 2021-03-15  
Extracted From: Hemp

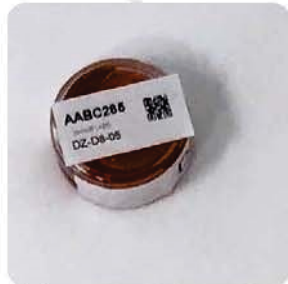
Test Reg State: Florida

Production Facility: Shyne Labs  
Production Date: 2021-03-15

Order # SHY210315-010074  
Order Date: 2021-03-15  
Sample # AABC265

Sampling Date: 2021-03-16  
Lab Batch Date: 2021-03-16  
Completion Date: 2021-03-23

Initial Gross Weight: 24.106 g



Product Image

Potency  
Tested

Heavy Metals  
Passed

Pesticides  
Passed

Residual  
Solvents  
Passed



### Potency - 11

Specimen Weight 58.630 mg

Tested  
(HPLC/LCMS)

Analyte	Dilution (1:n)	LOD (%)	LOQ (%)	Result (mg/g)	(%)
Delta-8 THC	1000.000	0.000026	0.001	935.110	93.511
CBDV	1000.000	0.000065	0.001	1.510	0.151
CBN	1000.000	0.000014	0.001	1.100	0.110
CBC	1000.000	0.000018	0.001	<LOQ	<LOQ
THCV	1000.000	0.000007	0.001	<LOQ	<LOQ
CBD	1000.000	0.000054	0.001	<LOQ	<LOQ
Delta-9 THC	1000.000	0.000013	0.001	<LOQ	<LOQ
CBGA	1000.000	0.000008	0.001	<LOQ	<LOQ
CBG	1000.000	0.000248	0.001	<LOQ	<LOQ
CBDa	1000.000	0.000001	0.001	<LOQ	<LOQ
THCA-A	1000.000	0.000032	0.001	<LOQ	<LOQ



### Potency Summary

Total THC None Detected	Total CBD None Detected
Total CBG None Detected	Total CBN 0.110%
Other Cannabinoids 93.662%	Total Cannabinoids 93.772%

Xueli Gao Lab Toxicologist  
Ph.D., DABT

Aixa Sun Lab Director/Principal Scientist  
D.H.Sc., M.Sc., B.Sc., MT (AAB)



Definitions and Abbreviations used in this report: \*Total CBD = CBD + (CBD-A \* 0.877), \*Total THC = THCA-A \* 0.877 + Delta 9 THC, \*CBG Total = (CBGA \* 0.877) + CBG, \*CBN Total = (CBNA \* 0.877) + CBN, \*Other Cannabinoids Total = CBC + CBDV + THCV + THCV-A, \*Total Detected Cannabinoids = CBD Total + CBG Total + CBN Total + THC Total + CBC + CBDV + THCV + THCV-A, \*Analyte Details above show the Dry Weight Concentrations unless specified as 12% moisture concentration. (mg/ml) = Milligrams per Milliliter, LOQ = Limit of Quantitation, LOD = Limit of Detection, Dilution = Dilution Factor (ppb) = Parts per Billion, (%) = Percent, (cfu/g) = Colony Forming Unit per Gram (cfu/g) = Colony Forming Unit per Gram, LOD = Limit of Detection, (µg/g) = Microgram per Gram (ppm) = Parts per Million, (ppm) = (µg/g), (av) = av (area ratio) = Area Ratio, (mg/kg) = Milligram per Kilogram, \*Measurement of Uncertainty = +/- 5%

This report shall not be reproduced, without written approval, from ACS Laboratory. The results of this report relate only to the material or product analyzed. Test results are confidential unless explicitly waived otherwise. Accredited by a third-party accrediting body as a competent testing laboratory pursuant to ISO/IEC 17025 of the International Organization for Standardization.



# Certificate of Analysis

2016 US-2 | Waterbury, VT 05676  
www.nslvt.com  
(802) 917-8294

## Green Top Farm

Hyde Park  
Hyde Park, VT 05655

Sample: 2009NSL0339.0991

Strain: Pineapple Haze  
Batch#: ; Batch Size: g

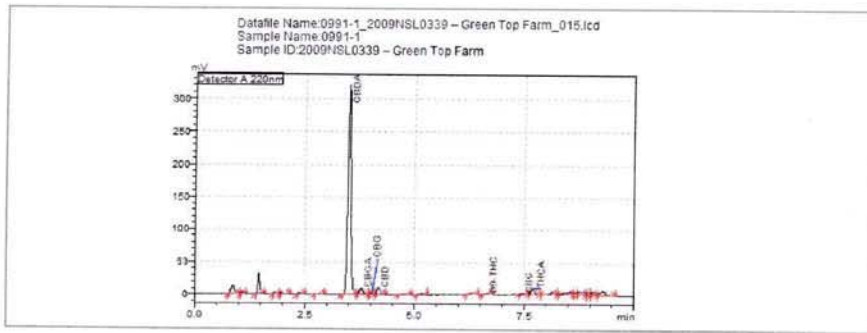
Sample Name: Pineapple Haze 9/14/20

Plant, Flower - Cured, Outdoor



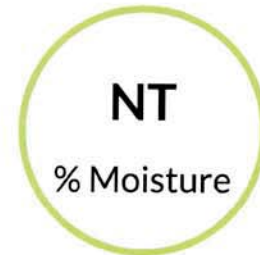
## Potency Test Result

Full spectrum cannabinoid profiling utilizing High Pressure Liquid Chromatography (HPLC)



## Cannabinoid Summary

Cannabinoid Profile	%	mg/g
Tetrahydrocannabinolic Acid (THCa)	0.662	6.62
Tetrahydrocannabinol ( $\Delta^9$ -THC)	<LOQ	<LOQ
Tetrahydrocannabinol ( $\Delta^8$ -THC)	ND	ND
Tetrahydrocannabivarin (THCv)	ND	ND
Cannabidiolic Acid (CBDa)	18.356	183.56
Cannabidiol (CBD)	0.728	7.28
Cannabidivarin (CBDv)	ND	ND
Cannabinol (CBN)	ND	ND
Cannabigerolic Acid (CBGa)	0.681	6.81
Cannabigerol (CBG)	<LOQ	<LOQ
Cannabichromene (CBC)	<LOQ	<LOQ
Total THC	0.581%	5.807 mg/g
Total CBD	16.827	168.269



Total THC = THCa \* 0.877 +  $\Delta^9$ -THC; Total CBD = CBDa \* 0.877 + CBD; Instrument: High Pressure Liquid Chromatography (HPLC); LOQ = Limit of Quantitation; ND = Not Detected



Vinnie Zachary  
Lab Director

Confident Cannabis  
All Rights Reserved  
support@confidentcannabis.com  
(866) 506-5866  
www.confidentcannabis.com



Values reported relate only to the product tested. NSL makes no claims as to the efficacy, safety, or other risks associated with any detected or non-detected levels of any compounds reported herein. This Certificate shall not be reproduced except in full, without written approval of NSL.