



THE BARNYARD BULLETIN

April 2026

March Recap

March kept us busy around the farm! We kicked off our Spring program, which always brings such an exciting energy. We spent time planting seeds for the plant sale, and our participants got their hands dirty planting in the garden as well.

Our cows also began their first rotation of the year to the other property, keeping the grass trimmed and the big girls happy with plenty of fresh grass to enjoy!



In this issue:

- What's Happening at Cooper Ridge?
- How Can I Help?
- Beyond the Barn
- Golf Classic Information
- Meet The Team
- Upcoming Events



Spring Veggie Plant Sale!

Mark your calendar for our Spring Veggie Plant Sale on **April 18 from 9 AM-12 PM!** The plants available for purchase have been lovingly grown and cared for by our participants. When you buy a plant, you're not just adding food on your table...you're supporting meaningful learning, growth, and purpose at the farm. Swing by to shop, connect, and celebrate the season with us! We'll also have ice-cold refreshments available for purchase from Wild Sugar and Cooper Ridge swag as well. Pre-order your plants here: <https://cooperridgefarm.betterworld.org/events/cooper-ridge-plant-sale>



<https://www.facebook.com/CooperRidgeFarm>



<https://cooperridgefarm.org/>



<https://shorturl.at/zSiL1>



April 2026

NEWSLETTER

What's Happening at Cooper Ridge?

Board of Directors Welcomes

Mr. Darren Scheyer

Our Board of Directors is thrilled to welcome Darren Scheyer to the team. Darren brings a wealth of knowledge and experience that strongly aligns with our mission at Cooper Ridge. As a long-time member of our community and co-owner of Partners in Achievement, he offers valuable insight and leadership.

Darren has been married to his wife for 29 years and is the proud father of two wonderful daughters.

We are excited to have him join us and look forward to the valuable contributions that he will bring to our organization.



Exciting Partnerships

Cooper Ridge has some very exciting partnerships underway! We've recently teamed up with a mental health group that joins us on the farm during sessions, allowing us to thoughtfully incorporate mental health support into our programming. This collaboration has created a meaningful space where we can learn from one another by blending our areas of expertise to better support each participant while continuing to grow in our own fields.

We're also thrilled to welcome Alexis, an Occupational Therapy graduate student from the University of St. Augustine, who will be with us over the next few months. She'll be conducting research on Animal Assisted Interventions, bringing a fresh perspective and helping us strengthen the impact of what we do every day. We're so excited to learn alongside her and contribute to research that highlights the value of the farm experience!

Success Story

One of our participants has truly found her place at the farm. From the moment she arrives, she brings a welcoming presence that helps other participants feel comfortable and at ease. She naturally steps in with kindness, offering a smile, a helping hand, or gentle hug to those who may be unsure. Over time, the farm has become more than just a place she visits; she lovingly calls it her "place to reset." It's where she can take a deep breath, connect with the animals, and be fully herself. Watching her grow in confidence while also lifting others up has been such a meaningful success story for us.



"An animal's eyes have the power to speak a great language."

-Martin Buber



Did you know?

A cow's stomach can hold as much as a bathtub!
The average cow can eat up to 40 pounds of food every day!

How Can I Help?

Donate Now!



<https://cooperridgefarm.org/donate>



Amazon Wishlist

<https://shorturl.at/zSiL1>



April 2026

NEWSLETTER

Beyond The Barn

In this section you'll gain an inside look at Cooper Ridge and the world of Animal Assisted Interventions, while learning how our work creates meaningful change through education and outreach.

**Have you listened to our latest podcast episode yet?
Click the link to the right to listen now!**



Finding Your Voice

One of the biggest areas we focus on during our sessions is speech and language development. Communication is a vital part of everyday life, and we intentionally incorporate a wide variety of activities to support growth in this area.

How does the farm help facilitate Speech and Language development?

Speech often comes more naturally in this environment. Rather than a traditional clinic setting, participants are engaged in real-life farm tasks that feel meaningful and purposeful, just like everyday chores. This naturally builds motivation, with many activities offering quick, rewarding outcomes that keep participants engaged. Being in a relaxed, outdoor setting also helps reduce pressure and anxiety.

What language exists naturally on the farm?

- Sequencing- Nearly every task on the farm involves sequencing, giving participants constant, natural opportunities to practice putting steps in order. For example, when feeding an animal, we might say, "First we scoop the feed, next we pour it, then we carry it to the animal, and last, we feed them." Breaking tasks down this way helps build understanding of order, transitions, and routines.
- Following directions- Many of our activities involve giving clear, consistent directions, especially during animal training. We model and verbalize commands, then follow through with a reward. For participants to successfully train an animal, they must understand and use those directions, reinforcing both comprehension and expression.
- Building Vocabulary- There are an endless number of words that can be used to describe things around the farm. In the quail coop alone, there are synonyms for words like small, actions like jump or eat and even words to describe observations of the animal's behaviors.
- Social Interactions- With the growing population at Cooper Ridge, there are increasingly more opportunities to practice social communication between participants. However, we also can use social language with our non-judgmental animal partners and practice different skills with them prior to introducing in social language with a human being.

Podcast Link

Spotify:

<https://shorturl.at/OXO2O>

Apple:

<https://shorturl.at/EiqAN>





April 2026

NEWSLETTER

Golf Classic Information

Come along with us as we tee up for an incredible event that will support the individualized therapy programs that we have here at Cooper Ridge!



West Lake Country Club
November 30, 2026

A NEW Tradition Like No Other

With spring in the air, it's hard not to think of the iconic Masters Tournament and all the excitement that comes with golf season. While you're in that golf mindset, it's the perfect time to get involved in our event. We need you!

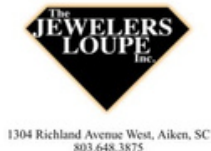
Consider joining our golf committee team, volunteer the day of the event, or become a player with a group of friends, family, or coworkers. It's a fun way to enjoy a day out on the course, connect with others, and support the mission of the farm all at the same time.

We Need Sponsors!

We are looking for business sponsors to partner with us for this exciting event. All proceeds from the golf classic will directly support our programs and the incredible participants who benefit from them.

If you know of anyone who would be interested in partnering with us, please send us their information, or share this link with them for more information: <https://cooperridgefarm.org/golf-tournament-2026>

Our Sponsors:



Golf Classic Info

Months Until The Golf Classic:

8



Tickets/ Sponsors

<https://cooperridgefarm.betterworld.org/events/1st-annual-cooper-ridge-farm-gol>



April 2026

NEWSLETTER

Meet The Team

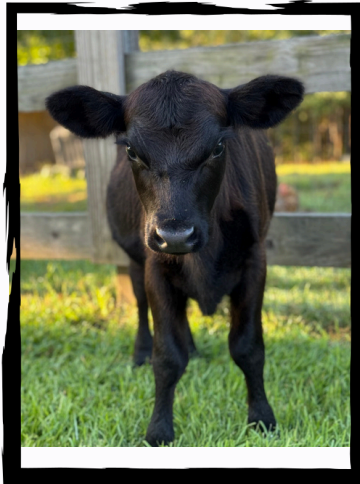


Participant Spotlight: Kahlan Petro

Meet Kahlan! She's been part of the farm family for over 4 years and has grown so much during that time, building strong, meaningful bonds with each animal. She's volunteered at special events and is currently working on illustrating a story featuring our farm friends. We wouldn't be surprised if Kahlan finds herself working at Cooper Ridge one day!

Animal Partner: Qivi

Meet Qivi! She came to us nearly a year ago, at just 5 days old. What started as bottle feeds in a bucket has grown into her spending her days out in the pasture with the other big girls. Qivi is one of our spunkiest cows, always ready to run around with Zeus and often trying to convince the others to play, even when they're just trying to enjoy a peaceful nap!



Volunteer Spotlight: Carolyn Kasprain

Meet Carolyn! She's our resident Speech Queen, always ready to guide us with creative and effective speech activities. Becoming an SLP in 1984, and treating since then, she has brought a wealth of knowledge to our



team. With Carolyn's guidance we've incorporated a wide range of visual aids into our sessions, making communication more accessible and engaging for our participants. She has also taught us countless speech and language strategies that we use every day, from modeling and prompting techniques to building functional communication in natural, meaningful ways. Her passion for helping others shines through in everything she does, and her impact can be seen in both our participants' growth and our team's continued learning.



Upcoming Events

April 6-10
Farm Closed for
Spring Break

April 18
Plant Sale!
9AM-12PM

April 23-24
Farm Closed for
Conference



[https://www.facebook.com/Cooper](https://www.facebook.com/CooperRidgeFarm)

[RidgeFarm](#)



cooperridgefarm.org

