



DARTON

ARCHERY

2019
PRODUCT CATALOG



DARTON ARCHERY SUCCESS!



Drew Young



Angela Boyd



Cody Primm



Ezra Greene



Jason Dlouhy



Lance Hasten



Lee Metcalf



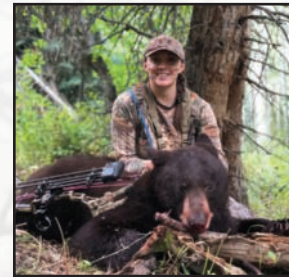
Matthew Perry



Evan Jones



Kasey Thren



Racheal M. Keithley



Randy Kreider



Richard Whaley



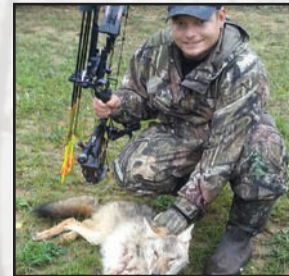
Travis Hammons



Tyler Reitz



Wyatt Smith



Aarin Green



Alex Golden



Angie Walker



Baylie Rodenbaugh



Eddie Mathis



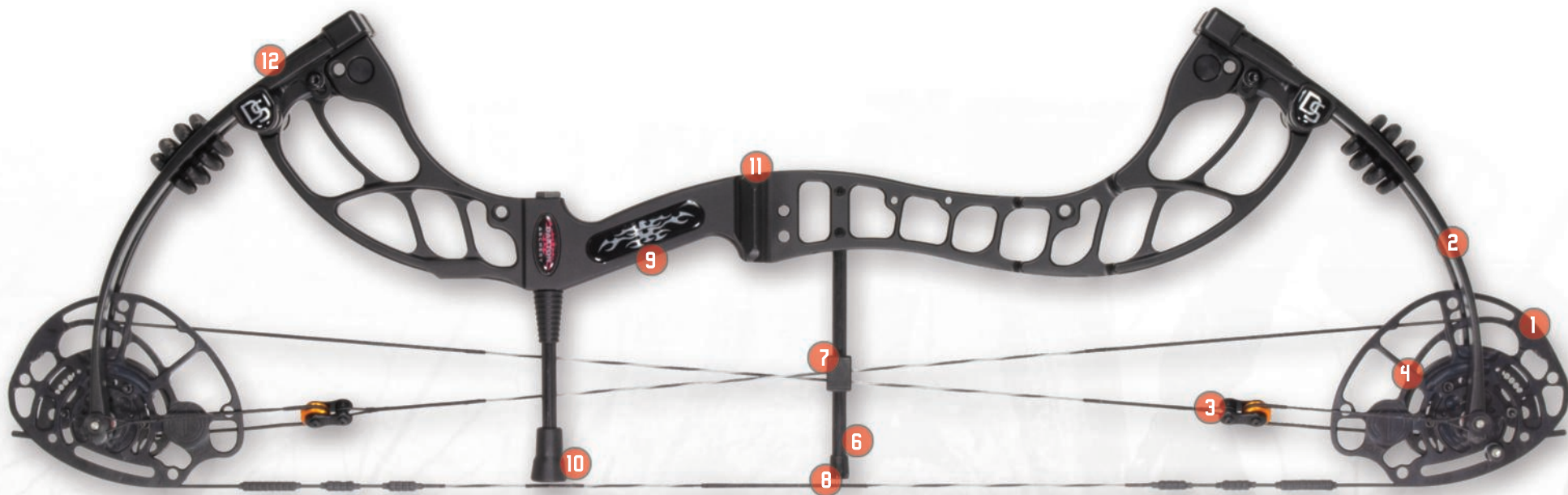
Jason William Bonomo



Michael Strupek



Taylor Neid



COMPOUND BOW TECHNOLOGY

1) DualSync Cam System: This patented cam system has effectively eliminated all of the 2 cam issues and resulted in a cam system that is less critical and more efficient than any other hybrid cam system to date. US Pat# 6,990,970 B1

2) E.E.T. Limbs: Efficient Energy Transfer Limbs, designed for maximum efficiency and minimum limb fatigue.

3) Equalizer Cable System: Featured on E Series Bows, this cabling system includes all the advantage of the Dual Sync Cam system, with the additional advantage of limb stabilization never before experienced with a split limb bow. Included with this unique cabling system is the option to use a positive limb stop. US Pat# 8,826,894 B1

4) Adjustable draw length module: Featured on PRO SERIES BOWS, the adjustable module allows you to adjust your draw length in 1/2" increments while maintaining the same draw cycle characteristics throughout the adjustment range. US Pat# 6,990,970 B1, 9,121,658 B1

5) DS-Yoke System: Featured on some Pro Series Bows, offers Increased limb stability by equalizing the load on both sides of the cam, minimizing any torque created by the cam as the bow is drawn and shot. US Pat# 6,990,970 B1

6) P.T.R. Cable Rod: Progressive Torque Reduction Cable Rod is designed to enable increased vane clearance at brace and reduced limb and riser torque during the draw cycle. By the cable rod flexing in toward the center of the bow as it is drawn, the cables have less torque effect on riser and limbs.

7) Acura Cable Slide: The new, patented Acura Slide produces a smoother draw cycle because its unique design allows the cables to align themselves correctly throughout the draw cycle. US Pat# 10,048,038 B1

8) 3-Axis Center Pull Technology: Increased tune-ability, efficiency and overall performance, achieved by centering the arrow on all 3 axes of the riser relative to the bowstring, cams and grip.

9) Signature Grip: Darton's Signature Grip is designed for fit and feel. You have to draw the bow to understand. It offers a level of comfort and stability 2nd to none. Two (2) different sets of side plates are available from Darton, as an accessory, that allow you to get the personalized feel you want.

10) B.N.S.S.: Bowstring Noise Suppression System instantly terminates string vibration after the shot.

11) Axis Riser: CNC-Machined Aluminum riser, designed for strength and maximum durability.

12) P.P.L. Limb Pockets: Pivoting, Positive Locating Limb Pockets designed to locate the E.E.T. limbs with precise alignment for precision accuracy with every shot.

VEGAS-T

THE ULTIMATE IN A SPOT BOW!

The **Vegas-T** features a uniquely designed riser with limb pockets designed for better control of limb alignment and a more controlled shot. The **Vegas-T** has a 38 1/2" axle-to-axle dimension and an 8" brace height, with draw lengths available up to 32". The reduced power stroke, resulting from the higher brace height, makes this bow an excellent choice when competing in tournaments where shooter fatigue can become an issue. With its 8" brace height and stellar level of performance, arrow time on the string is reduced to a minimum. If you want to shoot your very best, experience less shooter fatigue, enjoy over-the-top forgiveness and have over-all shoot-ability a priority, than the **Vegas-T** should be your choice. You will not find any bow easier to hold on the spot. Available with 65% or 80% draw length modules.

SPECIFICATIONS:

SPEED: **315-320 FPS** | AXLE-TO-AXLE: **38-1/2"**

BRACE HEIGHT: **8"** | MASS WEIGHT: **4.5 LBS.**

DRAW LENGTHS (65%): **26"-32"**

DRAW LENGTHS (80%): **26.5"-32.5"**

DRAW WEIGHTS: **40, 50, 60, 70** | LET-OFF: **65% or 80%** (adjustable)



Carl Johan Bengtsson

AVAILABLE COLORS:

*BLACK



*RED



*PURPLE



*BLUE



*WHITE



*Available with black or white limbs.

VEGAS-3D

STRAIGHT SHOT TO THE PODIUM!

The **Vegas-3D** could be considered a compromise bow when compared to the Vegas-T. However, when compared to most any other bow it is a hand's down winner. The Vegas-T limb length has been shortened, resulting in a lower brace height and an increase in its power stroke at all draw lengths, while retaining the desired balance of the Vegas-T. This has produced more stored energy and better performance while retaining most of the shooting attributes of the Vegas-T. These changes have also made this bow better suited for the shorter draw archer that wants to shoot a Vegas with a little more speed. Available with 65% or 80% draw length modules.

SPECIFICATIONS:

SPEED: **325-330 FPS** | AXLE-TO-AXLE: **36-7/8"**

BRACE HEIGHT: **7-1/4"** | MASS WEIGHT: **4.4 LBS.**

DRAW LENGTHS (65%): **25"-31"**

DRAW LENGTHS (80%): **25.5"-31.5"**

DRAW WEIGHTS: **40, 50, 60, 70** | LET-OFF: **65% or 80%** (adjustable)



Dean Brandt

AVAILABLE COLORS:

*BLACK



*RED



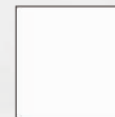
*PURPLE



*BLUE



*WHITE



*Available with black or white limbs.



SPECTRA e

NEW TECHNOLOGY FOR THE SHOOTER THAT IS EASY TO UNDERSTAND, EASILY ADJUSTED TO FIT, AND IT WORKS!

The **Equalizer cable system** introduced last year on the **Spectra e** is the closest thing you can get to a totally balanced shooting system, next only to the Darton Vegas. The adjustable draw modules and positive limb stop gives the shooter complete control of their draw length. The split yoke system that anchors on the axles, outboard of the limbs, totally **e**qualizer/stabilize the limbs and reduce the load on the cam bearings. Couple all of this with the very successful riser and limb design used with the Maverick XT you have a bow that deserves your attention.

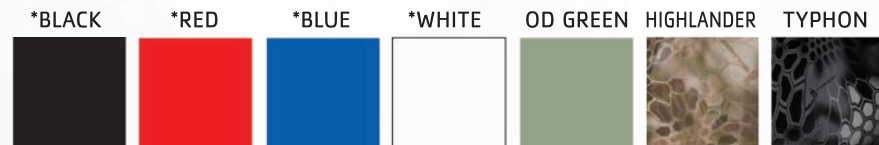
SPECIFICATIONS:

SPEED: **330-325 FPS** | AXLE-TO-AXLE: **32-5/8"**
 BRACE HEIGHT: **6"** | MASS WEIGHT: **4.2 LBS.**
 DRAW LENGTHS: **25"-31"**
 DRAW WEIGHTS: **40, 50, 60, 70** | LET-OFF: **85%**



Jeff Elliott

AVAILABLE COLORS:



*Available with black or white limbs.



TEMPEST e-T

OVER-THE-TOP SHOOTABILITY!

The **Tempest e-T**, featuring **e**qualizer Technology with draw lengths adjustable up to 31", is a long 37-1/4" axle-to-axle bow with a 7-5/16" brace height. Finger shooters will find the reduced string angle a plus. The reduced power stroke, resulting from the higher brace height, and reduced let-down slope makes this bow an excellent choice when competing in tournaments where you're shooting a lot of arrows. If you want less shooter fatigue from a bow, but still want over-the-top forgiveness, shootability, and performance, the **Tempest e-T** should be your choice. With its redesigned riser and limb pockets for a more controlled shot, things just keep getting better.

SPECIFICATIONS:

SPEED: **310-315 FPS** | AXLE-TO-AXLE: **37-1/4"**
 BRACE HEIGHT: **7-5/16"** | MASS WEIGHT: **4.0 LBS.**
 DRAW LENGTHS: **26"-31"**
 DRAW WEIGHTS: **40, 50, 60, 70** | LET-OFF: **85%** (adjustable)

TEMPEST e-3D

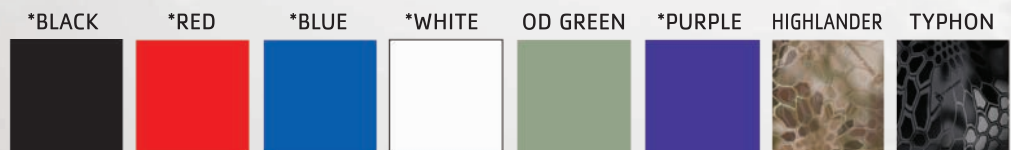
THE BEST OF ALL WORLDS!

Taking the successful **Tempest e-T** design and focusing on more performance, the limb lengths are shorter resulting in a lower brace height and an increased power stroke at all draw lengths, and the draw cycle has been modified for a more aggressive draw cycle. This has produced more stored energy and better performance while retaining most of the shooting attributes of the **Tempest e-T**. These changes have also made this bow better suited for the shorter draw archer that wants to shoot a Tempest. The bow will live up to all of your expectations.

SPECIFICATIONS:

SPEED: **320-325 FPS** | AXLE-TO-AXLE: **36"**
 BRACE HEIGHT: **6-1/2"** | MASS WEIGHT: **3.9 LBS.**
 DRAW LENGTHS: **25"-30"**
 DRAW WEIGHTS: **40, 50, 60, 70** | LET-OFF: **85%** (adjustable)

AVAILABLE COLORS:



*Available with black or white limbs.

TEMPEST XT-3D/LD

A BOW THAT FITS!

For the longer draw archer that wants the shooting advantages the Tempest-3D offers we have adapted the Maverick-XT Cam with its adjustable draw lengths and stellar performance. The **Tempest XT-3D/LD** provides a great 3D bow with draw lengths up to 32 1/2" long, great for that extra performance at the longer draw lengths.

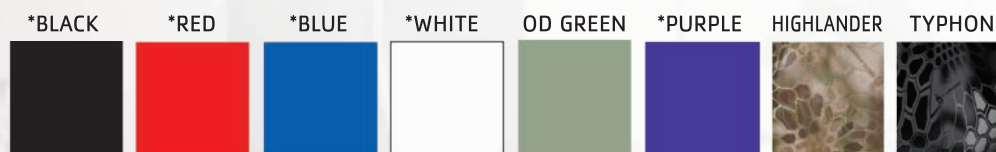
SPECIFICATIONS:

SPEED: **320-325 FPS** | AXLE-TO-AXLE: **36"**
BRACE HEIGHT: **6-5/8"** | MASS WEIGHT: **3.9 LBS.**
DRAW LENGTHS: **27"-32.5"**
DRAW WEIGHTS: **40, 50, 60, 70** | LET-OFF: **85%**



Bruce Gray

AVAILABLE COLORS:



*Available with black or white limbs.

MAVERICK-XT

A MUST SHOOT!

Only a bow like this would be worthy of the Maverick name, once the Flagship of Darton's Bow Line. The new **Maverick-XT** has quite a reputation to live up to, and we feel it is up to the task. Once you shoot the NEW **Maverick-XT**, we are sure you will agree. With its new cam design that features an adjustable draw module, and all the advantages of its predecessor, you will find this bow to be impressively fast, with no vibration after the shot. It will instill a feeling of confidence few bows can.

SPECIFICATIONS:

SPEED: **340-345 FPS** | AXLE-TO-AXLE: **33"**

BRACE HEIGHT: **6"** | MASS WEIGHT: **4.2 LBS.**

DRAW LENGTHS: **25"-30.5"**

DRAW WEIGHTS: **40, 50, 60, 70** | LET-OFF: **85%**



Mark Myers & Jacob Slusarz

AVAILABLE COLORS:



*Available with black or white limbs.

LIGHTNING-XT

COMPACT, FAST AND SMOOTH!

The **Lightning-XT** is built using the Maverick platform, an already fast bow. It was decided DARTON would raise the bar for speed with the **Lightning-XT**. We started by applying some of our new technology to things we have done in the past. We started with a new shorter limb design, the new XT High Energy cam design with adjustable draw length modules and a lower brace height. In doing all this, we made sure we had a smooth, vibration free bow with Darton's noted shootability. Test shoot the bow, we are certain you will agree.

SPECIFICATIONS:

SPEED: **345-350 FPS** | AXLE-TO-AXLE: **33"**
BRACE HEIGHT: **5-1/2"** | MASS WEIGHT: **4.2 LBS.**
DRAW LENGTHS: **24.5"-30"**
DRAW WEIGHTS: **40, 50, 60, 70** | LET-OFF: **85%**



Robert Kennedy

AVAILABLE COLORS:

*BLACK



OD GREEN



HIGHLANDER



TYPHON



*Available with black or white limbs.



DEMON & DEMON SD

COMPACT PERFORMANCE!

If you want a short, fast, quiet bow to use in your blind or treestand the **Demon** is your bow. Powered by a version of the DualSync cam system with an adjustable module system that allows adjustments from 27" – 30" of draw length in 1/2" increments. An adjustable draw stop on the perimeter of the cam stops against the limb allowing you to fine tune your draw length and let-off. The **Demon** cam also features a cam stabilization system that eliminates cam lean. When you pick up a **Demon**, you will notice right away it shares many of the features and attributes of other Darton DualSync bows: fast, quiet and smooth draw cycle, you will know you are shooting a winner. The 30" axle to axle will make this your "go to" bow when hunting and space are mentioned in the same sentence. You will find very few bows with the pricing, performance and features offered by the Demon

SPECIFICATIONS:

SPEED: **330-335 FPS** | AXLE-TO-AXLE: **30"**

BRACE HEIGHT: **7"** | MASS WEIGHT: **4.0 LBS.**

DRAW LENGTHS: **27"-30"**

DRAW WEIGHTS: **40, 50, 60, 70** | LET-OFF: **80%** (adjustable)

SHORT AND SWEET! The **Demon-SD** has all the features and advantages of the Demon with its own cam designed for the shooter with a shorter draw. With an adjustable draw length of 24 – 28", in 1/2" increments, this bow will fit the shorter draw archer and provide features and performance not found with any other bow in this price range

SPECIFICATIONS:

SPEED: **N/A** | AXLE-TO-AXLE: **30"**

BRACE HEIGHT: **7"** | MASS WEIGHT: **4.0 LBS.**

DRAW LENGTHS: **24"-28"**

DRAW WEIGHTS: **40, 50, 60, 70** | LET-OFF: **80%** (adjustable)

AVAILABLE COLORS:

BLACK



OD GREEN w/BLACK LIMBS





EXCITER

WHEN PERFORMANCE IS A MUST!

Uniquely designed for young adults and lady archers who are tired of shooting kids bows. With its slim line grip and a modest weight of only 3.4 pounds it makes for a very controllable bow. The **Exciter** is for archers with a short draw length that want performance in a bow that has a peak weight in the 35-50 pound range. It's powered by Darton's Patented DualSync Cam System for unbelievable speed and shoot-ability at draw lengths of 22" to 27.5". The Exciter fills that gap where Draw Length, Weight or Speed have been an issue. For the archer with a short draw length that has had a hard time getting performance, the **Exciter** fills that void! Pound for pound, this bow shoots as well as any Pro Series bow. Available in draw weights 35-50 pounds.

SPECIFICATIONS:

AXLE-TO-AXLE: **28-7/8"**

BRACE HEIGHT: **6-3/4"** | MASS WEIGHT: **3.4 LBS.**

DRAW LENGTHS: **22"-27.5"**

DRAW WEIGHTS: **35-50** | LET-OFF: **80%**

PACKAGE:

*4 Arrow Darton BQ4 Quive | *3-pin Fiber Optic Sight

*Capture Type Rest

*accessories may change



Jack Corriveau

AVAILABLE COLORS:

BLACK



OD GREEN w/BLACK LIMBS



SPLASH

A REAL SCALE BUSTER!

A bow designed for bow fishing! Not just something painted blue with a line and arrow attached to it. This is a real scale buster! With machined, anodized cams, Stainless Steel cam bearing and axles, and all Stainless-Steel fasteners, there isn't much you can do to this bow while fishing that can cause a bow problem. The **Splash** has all the standard mounting holes so all bow fishing accessories easily bolt on.

SPECIFICATIONS:

AXLE-TO-AXLE: **28-1/2"**

BRACE HEIGHT: **7"** | MASS WEIGHT: **3.4 LBS.**

DRAW LENGTHS (65%): **23.5"-29.5"**

DRAW WEIGHTS: **35-50** | LET-OFF: **50%**

PACKAGE:

*Zebco 808 Direct Mount Reel | *Bow Fishing Arrows w/ Safety Slide System

*Quick Draw Rest

*accessories may change



ACCESSORIES & APPAREL





Limited Lifetime Warranty

Darton Archery proudly stand behind the workmanship and quality of Darton bows and crossbows and offers a Limited Lifetime Warranty. This Warranty applies to the original owner and is nontransferable. This Warranty covers:

- Riser and stock against defects in material and workmanship for the lifetime of the product.
- Limbs and Cams against defects in material and workmanship for ten (10) years from the original date of purchase based on Pro-Rated terms and the warranty as written in our current technical service manuals.

Items not covered by Warranty are strings, cables, cable guard slides, bushings, paint and finish. There are no other warranties expressed or implied binding Darton Archery, its dealers or distributors. For complete Warranty information, customer service or technical assistance, please call or write:

Darton Archery – 3540 Darton Rd., Hale, MI 48739
Customer Orders/Inquiries: 989.728.4231

Phone 989.728.4231 Fax: 989.728.2410
Warranty/Repair: 989.728.9511

To purchase online or get the latest product information, news and updates, visit our website www.dartonarchery.com
©Copyright 2019, Darton Archery. All rights reserved. Darton Archery reserves the right to change product, prices, models, features, material and specifications without notice.

TOXIN¹⁵⁰

COMPACT PERFORMANCE!



FEATURES:

- Hi-Energy Cam System
- Trackless Aluminum Barrel design
- Patented Anti Dry Fire Safety
- Rifle Style Rotating Safety
- 3 Pound Trigger Pull
- Patented Barrel Dampener
- Sims LimbSaver® Technology
- Oversize Foot Stirrup
- Sling Studs Included
- Dual String Suppressors
- Patented Bullpup Stock Design
- Bowstring: 36 7/8" - Power Cables: 18 3/8"

SPECIFICATIONS:

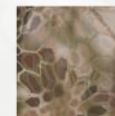
SPEED (400 GR.): **380 FPS**
POWER STROKE: **15"** | DRAW WEIGHT: **185 LBS.**
MASS WEIGHT: **7.4 LBS.**
AXLE-TO-AXLE: **17"** | OVERALL LENGTH: **33-1/2"**

AVAILABLE COLORS:

*BLACK



HIGHLANDER



"**WOW**" is commonly how the **Toxin 150** is described after first shooting it. It's mind blowing how such a short, well-balanced crossbow can shoot 380 fps and be so quiet. The **Toxin 150** utilizes Darton's popular Toxin compact tactical stock and narrow high-energy limb system for performance and maneuverability in any hunting situation. If you are looking for a lightweight, fast, and easy to maneuver crossbow, the **Toxin 150** is the crossbow for you!

Choice of Kryptek Highlander Camo with a standard Forearm (SS) or Shadow Black with a TAC (XT) front end that includes an adjustable vertical grip.

TOXIN¹³⁵

LIGHTWEIGHT & COMPACT!



SS MODEL

XT MODEL

FEATURES:

- Hi-Energy Cam System
- Trackless Aluminum Barrel design
- Patented Anti Dry Fire Safety
- Auto Engaged Safety
- Patented Barrel Dampener
- Sims LimbSaver® Technology
- Oversize Foot Stirrup
- Sling Studs Included
- Dual String Suppressors
- Patented Bullpup Stock Design
- Bowstring: 36 3/4" - Power Cables: 18 3/8"

SPECIFICATIONS:

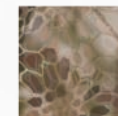
SPEED (400 GR.): **355 FPS**
 POWER STROKE: **13-1/2"** | DRAW WEIGHT: **180 LBS.**
 MASS WEIGHT: **7.3 LBS.**
 AXLE-TO-AXLE: **17"** | OVERALL LENGTH: **32"**

AVAILABLE COLORS:

*BLACK



HIGHLANDER



First item of interest is the Toxin's short overall length, a modest 32 inches, including foot stirrup, typical of the Toxin Series. This is possible through Darton's innovated forward trigger design that results in beneficial weight distribution, creating a new level of comfort when shooting. Being lightweight, short, and featuring a 13.5" power stroke with a narrow axle-to-axle of 17", the **Toxin 135** can easily be maneuvered anywhere: tree stand, ground blind or at the edge of the field hunting varmints.

Choice of Kryptek Highlander Camo with a standard Forearm (SS) or Shadow Black with a TAC (XT) front end that includes an adjustable vertical grip.

TOXIN¹²⁵ SS

LIGHTWEIGHT PERFORMER!



FEATURES:

- Hi-Energy Cam System
- Trackless Composite Barrel design
- Laminated Limbs
- Patented Anti Dry Fire Safety
- Auto Engaged Safety
- Dual String Suppressors
- Sling Studs Included
- Bowstring: 36 3/4" - Power Cables: 18 3/8"

The **NEW Toxin 125** is a crossbow that benefits from the key technology featured in both the Toxin 100 and 135. The **Toxin 125** features the light weight stock of the Toxin 100 combined with laminated limbs and new cams to get performance approaching that of the Toxin 135. Because of its uniquely smooth power, you will find this crossbow a breeze to cock while still having the ability to launch a 400-grain arrow at 350 fps. The 17" axle to axle and its short length allow the Toxin 125 to be used in any blind. Available in OD Green w/Black Front End. The **Toxin 125** will accept the XT accessory kit.

SPECIFICATIONS:

SPEED (400 GR.): **350 FPS**
POWER STROKE: **13-1/2"** | DRAW WEIGHT: **175 LBS.**
MASS WEIGHT: **6.8 LBS.**
AXLE-TO-AXLE: **17"** | OVERALL LENGTH: **31-3/4"**

TOXIN¹⁰⁰ SS

SUPER LIGHTWEIGHT!



FEATURES:

- Hi-Energy Cam System
- Trackless Composite Barrel design
- Patented Anti Dry Fire Safety
 - Auto Engaged Safety
 - Dual String Suppressors
 - Sling Studs Included
- Bowstring: 36 3/8" - Power Cables: 18 3/8"

The **Toxin 100 SS** marks some firsts for Darton's crossbow lineup. The Toxin 100 is the lightest of Darton's crossbows at 6.8 pounds, along with being the shortest at 31-3/4". You wonder what Darton surrendered in order to achieve these firsts? Nothing. The **Toxin 100** features a trackless composite barrel assembly using Darton's Patented Bullpup forward trigger design to maximize power stroke and get a better-balanced bow for the hunter. Because of its uniquely smooth power stroke, modest 170 lbs. draw weight and 13-1/2" power stroke most hunters will find this crossbow a breeze to cock while still having the ability to launch a 400-grain arrow at 340 fps. The 17" axle to axle and its short length allow the Toxin 100 to be used in any blind. Available in Shadow Black for the High Tech look it deserves. The **Toxin 100 SS** will accept the XT accessory kit.

SPECIFICATIONS:

SPEED (400 GR.): **340 FPS**
POWER STROKE: **13-1/2"** | DRAW WEIGHT: **170 LBS.**
MASS WEIGHT: **6.8 LBS.**
AXLE-TO-AXLE: **17"** | OVERALL LENGTH: **31-3/4"**

BOW SPEC CHART

ITEM#	Model	Limb Type	Cam System	Wheel Spec.	Effect. Let-Off.	Draw Length	Brace Height	Peak Weight	Axle-to-Axle	Mass Weight	IBO Speed fps@30"
Pro ST Series											
9D4548	Vegas-T	QUAD-C	DualSync-V	1-7 mod.	65/80%	26-32"	8"	40, 50, 60, 70	38 1/2"	4.5 lbs.	315-320
9D4547	Vegas-3D	QUAD-L	DualSync-V	1-7 mod.	65/80%	25-31"	7 1/4"	40, 50, 60, 70	36 7/8"	4.5 lbs.	325-330
Pro Series											
9D4900	Spectra-e	QUAD-L	DualSync-EQ	adj. mod.	75/85%	25-31"	6"	40, 50, 60, 70	32 3/4"	4.2 lbs.	330-335
9D4700	Tempest e-T	QUAD-C	DualSync-G1	adj. mod.-G2	75/85%	26-31"	7 5/16"	40, 50, 60, 70	37 1/4"	4.0 lbs.	310-315
9D4710	Tempest e-3D	QUAD-L	DualSync-G1	adj. mod.-G1	75/85%	25-30"	6 1/2"	40, 50, 60, 70	36"	3.9 lbs.	320-325
9D4720	Tempest XT-3D/LD	QUAD-L	DualSync-C1	adj. mod.	80/85%	27-32 1/2"	6 5/8"	40, 50, 60, 70	36"	3.9 lbs.	330-335
9D4400	Maverick XT	QUAD-L	DualSync-C1	adj. mod.	80/85%	25-30 1/2"	6"	40, 50, 60, 70	33"	4.2 lbs.	340-345
9D4200	Lightning XT	QUAD LS	DualSync-C1	adj. mod.	80/85%	24 1/2-30"	5 1/2"	40, 50, 60, 70	33"	4.2 lbs.	345-350
Action Series											
9D814	Demon	QUAD-B	DualSync-T	adj. mod.	80%	27-30"	7"	40, 50, 60, 70	30"	4.0 lbs.	330-335
9D815	Demon SD	QUAD-B	DualSync-U	adj. mod.	80%	24-28"	7"	40, 50, 60, 70	30"	4.0 lbs.	N/A
9D414	Exciter	QUAD-E	DualSync-Z	1-6 mod.	80%	22-27 1/2"	6 3/4"	35-5-	28 7/8"	3.4 lbs.	N/A
9D450	Splash	QUAD-E	DualSync-A2	Universal	50%	23 1/2-29 1/2"	7"	35-50	28 1/2"	3.4 lbs	N/A

CROSSBOW SPEC CHART

Crossbow Model	Peak Weight	Power Stroke	Finish	X-Bow Weight	Hard Anodized Barrel	Sims LimbSaver® Technology	Teflon™ Coated Barrel	Precision Machined Arrow Track	Dry-Fire Prevention Mechanism	Barrel Dampener	Universal Weaver Scope Mount	Adjustable Butt Plate
Toxin 150	185#	15"	Camo *SB	7.4 lbs	Yes	Yes	Yes	Yes	Yes	Yes	Yes	Yes
Toxin 135	180#	13 1/2"	Camo *SB	7.3 lbs	Yes	Yes	Yes	Yes	Yes	Yes	Yes	Yes
Toxin 125	175#	13 1/2"	OD Green w *SB	6.8 lbs	No	No	No	No	Yes	No	Yes	Yes
Toxin 100	170#	13 1/2"	*SB	6.8 lbs	No	No	No	No	Yes	No	Yes	Yes
Crossbow Model	Item	Machined Front Riser	Wheel Type	Machined Trigger Box Assembly	Gun-Style Safety LH or RH	Excepts Cocking Winch	Center Balance Point Design	Includes Bowstring Dampener System	Limb Type	Synthetic Split-Yoke Power Cables	Performance with 400 Grain x 22" Arrow	Safety Engaged When Cocked
Toxin 150	9932	Yes	Mach HEC	Yes	Yes	Yes	Yes	Yes	Lam. Quad	Yes	380 fps	No
Toxin 135	9930	Yes	Mach HEC	Yes	No	Yes	Yes	Yes	Lam. Quad	Yes	355 fps	Yes
Toxin 125	9937	Yes	Mach HEC	Yes	No	Yes	Yes	Yes	Lam. Quad	Yes	350 fps	Yes
Toxin 100	9936	Yes	Mach HEC	Yes	No	Yes	Yes	Yes	Quad Straight	Yes	340 fps	Yes

Mach HEC = Machined High Energy Cam | * Shadow Black | Lam. Quad = Laminated Quad Limbs



To purchase online or get the latest product information, news and updates, visit our website www.dartonarchery.com ©Copyright 2019, Darton Archery. All rights reserved. Darton Archery reserves the right to change product, prices, models, features, material and specifications without notice.