



SUSTAINABLY SOURCED

As a sustainability promise, we will always aspire towards more environmentally friendly means of manufacturing, packaging, and distribution.

The recent adoption of PLA-PHA packaging is just the beginning of this commitment.



botalab focuses entirely on plant-based formulations.



Many products come in outer packaging with an "FSC Mix Label".

This signifies that each box was made with a mixture of materials from FSC-certified forests, recycled materials, and/or controlled wood.

SIMPLISTIC & HOLISTIC

Despite the multiple products and suggested routines, focusing on these three main tenants simplifies any ritual you ascribe to and embrace the concept of self-care.

This simplicity doesn't just apply to your skincare – our holistic formulations and innovations ensure that your self-care is a total body experience.

CLEANSE

Remove impurities and prepare the face for further treatments.

HYDRATE

Rebalance water levels within the skin for cellular health and aesthetic glow.

PROTECT

Provide security against outside aggressors, like UV rays and pollution, to keep your skin healthy all day long.

A DIFFERENCE YOU'LL LOVE

Whether you have cabinets full of products or you barely know what formulas to go for, we at RIMAN promise to provide a Difference you need to experience, and one that you'll love – we are unlike any other product on the market, for good reason.



GIANT BYOUNGPOOL

ByoungPool, native to Southeast countries like India and China, has shown a history of use expanding thousands of years. Tigers were known to roll in these leaves to heal wounds after their battle, thus the name “tiger grass”. In Sri Lanka, these leaves were associated with longevity, and in Ayurvedic medicine, BYoungPool was revered as a mind-clearing actives.



Known as: Asiatic pennywort, tiger grass, Gotu Kola, and, most commonly, centella asiatica.



ASK BASE SMART FARM

Within the Jeju Lava Research Center, ASK BASE has established a Smart Farm where we are able to monitor and perfect the cultivation of Giant BYoungPool for consistent leaf growth, every time.

Our careful cultivation parameters allowed for the discovery of a new strain of BYoungPool, Giant BYoungPool, which RIMAN holds an exclusive patent on.



BYOUNGPOOL vs. **GIANT BYOUNGPOOL**

BYoungPool is known for its gentleness towards sensitive skin, providing calmness, hydration, and improving the skin barrier.

Traditional BYoungPool is 3-4x smaller than Giant BYoungPool and is often dried to lower the costs of raw material shipping – this removes the essential water-soluble nutrients within the leaves.

Because of our direct access to the Giant BYoungPool, we use fresh leaves, providing all the benefits of traditional BYoungPool and MORE!

Giant BYoungPool is known to have:

- A higher polyphenol content for greater antioxidant activity.
- A significant reduction in the appearance of fine lines and wrinkles.
- Provide reduction in hyperpigmentation.

JEJU LAVA **ENERGY WATER**



Roughly 400,000 years ago, a volcano began to form on Jeju Island, known as Hallasan. The surrounding seawater began to filter through its volcanic bedrock, which purified the water from heavy metals and toxins and instilled it with various essential minerals.

Jeju Lava Energy Water has studied benefits for improving skin hydration and benefits the growth of our Giant BYoungPool leaves.

- 1** We grow our Giant BYoungPool with Jeju Lava Energy Water – there appears to be a synergistic effect in which this water enhances the growth and ultimate skin treatment potential of the leaves.
- 2** We extract our Giant BYoungPool with Jeju Lava Energy Water – during our extraction process, leaves are heated to a specific temperature in a vat of Jeju Lava Energy Water to enhance the total nutrient extraction from each batch.
- 3** Traditional formulas can contain up to **80%** distilled water, offering no benefit to the skin. We use Jeju Lava Energy water as the main water phase in our formulas, whenever possible, to offer efficacy at every opportunity.

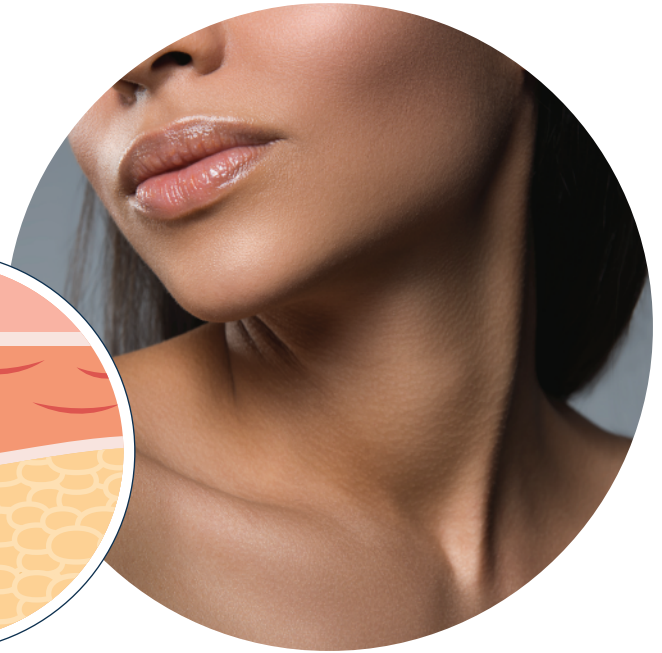
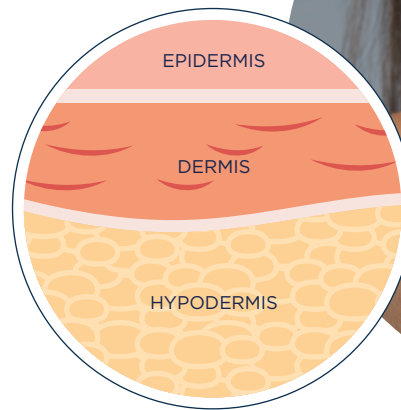
Our hero ingredients, Giant BYoungPool and Jeju Lava Energy Water, offer significant forms of skincare formulation that enhance the health of your skin and respect the tradition of self-care.



YOUR SKIN

Your skin is made up of three layers

1. The Epidermis
2. The Dermis
3. The Hypodermis



EPIDERMIS:

Your epidermis is composed of layers of skin cells, called **keratinocytes**. New cells form at the base layer and slowly migrate up to the top over a period of weeks, maturing and eventually flaking off at the top layer as “dead skin”. This is known as the **skin cycle**, which can take anywhere from 4-8 weeks depending on your age.

The epidermis also houses **melanocytes** at its base layer, which are the cells that create pigment, or **melanin**. Melanocytes and their melanin synthesis are often target sites for hyperpigmentation-reducing actives.

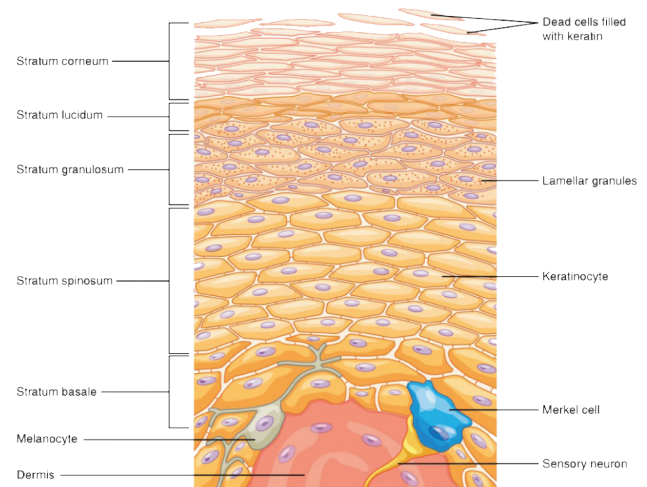
The stratum corneum, the upper-most layer of the dermis, displays a “**brick-and-mortar**” structure, which refers to the tight packing of cells (bricks) and the surrounding lipid environment (mortar).

This is known as the skin barrier, and it functions to block outside irritant penetration and internal water evaporation.

“Brick and mortar” structure of stratum corneum



- Corneocyte
- Lipid matrix
- Corneodiosmosis

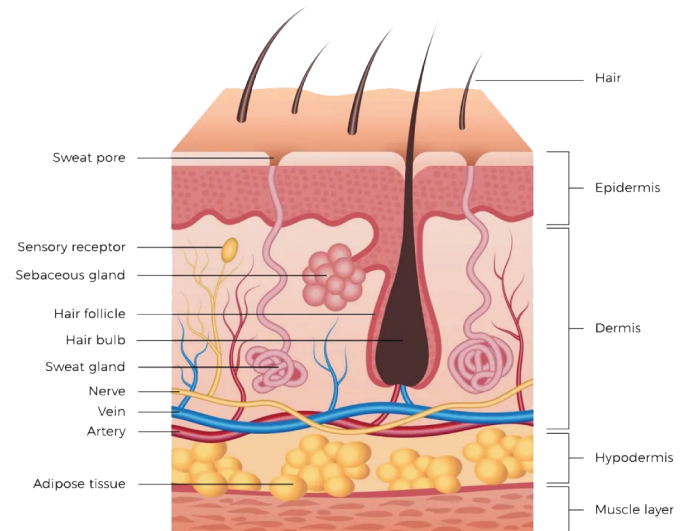




DERMIS:

Your dermis is the middle layer of cells and houses multiple important components, such as blood vessels, hair follicles, sebaceous (oil) glands, and sweat glands. It is also home to the **Extracellular Matrix**, or “ECM”, that houses your collagen, elastin, and hyaluronic acid.

As we age, the ECM is affected, as collagen stores begin to decrease, and hydration is lost.



HYPODERMIS:

This bottom-most layer houses your adipose tissue, or fat cells, which provide cushioning and insulation to the body. Traditional personal care products do not interact with this layer.

The EXTRA Layer - the **MICROBIOME**

Your microbiome is comprised of millions of Bacteria, fungi, and viruses that naturally exist on top of the epidermis to protect against invading pathogens. A healthy microbiome has an abundance of beneficial bacteria, whereas a disrupted microbiome may have pathogenic species dominating.





COMMON SKIN ISSUES AND THEIR PHYSIOLOGIES

DISRUPTED BARRIER: A compromised barrier is missing water within the cells or lipids within the environment, leading to gaps through which irritants can penetrate and water can be lost, potentially causing irritation, inflammation, and dryness.

DRY SKIN: Skin is lacking oils.

DEHYDRATED SKIN: Skin is lacking water content.

FINE-LINES, WRINKLES, AND SAGGING: The ECM is compromised, either with a loss of collagen and elastin or of hyaluronic acid. This means less structural support to the skin and subsequent “dips”, visible on the surface, due to the loss of dermal volume.

OXIDATION: Oxidative species are molecules missing electrons which can form within the skin due to UV exposure, pollution, or various other external factors. These species want electrons, so they steal them from surrounding cells, causing pigmentation, dryness, collagen loss, and general cellular disruption.

YOUR SKIN +RIMAN

RIMAN focuses on promoting your ultimate skin health with proprietary ingredients and patented technologies to create formulations that satisfy the main K-beauty tenants of self-care.

CLEANSE: Remove surface impurities and dead skin cells to lessen the chances of common skin issues occurring AND to prep the skin for later treatment.

HYDRATE: Reinforce the health and general function of both your dermal and epidermal layers for calmed, supported, and glowy skin.

PROTECT: Limit the effects of external aggressors, such as UV rays, pollution, and irritants, by reinforcing your skin’s innate barrier or by providing environmental protection, such as with sunscreen.

While RIMAN is not meant to prevent or cure any skin diseases, many of our products offer beneficial ingredients that address common skin concerns.

DISRUPTED BARRIER: Restoring the barrier involves replenishing the structural lipids and returning hydration to the cells.

- **Giant BYoungPool** – Hydration to the cells.
- **Ceramides** – Replenishment of one of the skin’s natural lipids.
- **Natural Oils** – Replenishment of the skin’s lipid environment.





DRYNESS/DEHYDRATION: Moisturizing and hydrating ingredients restore the natural water content in the cells to promote more radiant, even-textured skin.

- **BYoungPool Leaf Water** – Powerful hydration activity.
- **Humectants (1,2-Hexanediol, Propylene Glycol, Glycerin, Hyaluronic Acid)** – Attracts water to the skin.
- **Damask Rose Water** – Maintains skin's integrity through seasonal changes.
- **Hyalucollagen-3** – Attracts water to the skin.

HYPERPIGMENTATION/DARK SPOTS:

Delivering target actives to melanocytes or melanogenetic pathways allows for a reduction in the overproduced melanin within the skin.

- **Vita-Complex** – 5 vitamin-complex to brighten the skin.
- **Niacinamide** – Industry favorite, inhibits melanin production.
- **RK-Snowflake** – Exclusive complex to brighten the skin.
- **BYoungPool** – Powerful antioxidant.
- **Seaberry Water (Vitamins C and E)** – Powerful antioxidants.



FINE LINES/SAGGING: Providing support and hydration to the ECM promotes a greater structural integrity for an outward appearance of plumpness.

- **Collageneer** – Plumps the skin and supports the fibroblasts (cell types that make collagen).
- **Acetyl Hexapeptide-8** – Collagen stimulation.
- **Palmitoyl Pentapeptide-4** – Supports healthy collagen function and organization.
- **NBP-Complex, EZ-COM-6 Complex** – Botanical complex for skin elasticity.

