

MISSOURI BANDMASTERS ASSOCIATION MISSOURI ALL-STATE BAND AUDITION MATERIALS

FLUTE & PICCOLO Sets II, III, IV

Scale: All scales are to be MEMORIZED.
Prepare them all slurred and tongued in sixteenth notes at quarter note = 88.
Scales should be performed ascending and descending. Scales given are the starting tone. DO NOT TRANSPOSE.

All scales are to be prepared from required scale sheet as written.

Chromatic: Perform the chromatic exactly as written.

Major Scales: C G D A E B/Cb F#/Gb C#/Db Ab Eb Bb F

Minor Scales: a e b f# c# g#/ab d#/eb a#/bb f c g d

Books:

Advanced Method for Flute, Volume II – Voxman/Rubank Publication

Selected Studies for Flute – Voxman/Rubank Publication

Set I (2020-2021)	Advanced Method	p. 6	#6 slurred
		p. 17	#61 slurred, groups of 4
		p. 51	#4
		p. 56	#18
	Selected Studies	p. 8 p. 14	all only
Set II (2021-2022)	Advanced Method	p. 9	#20 slurred
		p. 16	#55 slurred
		p. 52	#9
		p. 55	#16
	Selected Studies	p. 23 p. 38-39	all Ab Major, Andante
★ Set III (2022-2023)	Advanced Method	p. 10	#27 slurred, groups of 4
		p. 17	#60 slur 1 st line, tongue 2 nd
		p. 50	#3
		p. 56	#20
	Selected Studies	p. 10 p. 27	all Vivace
Set IV (2023-2024)	Advanced Method	p. 12	#34 slurred
		p. 16	#54 slurred, groups of 4
		p. 54	#14
		p. 57	#22
	Selected Studies	p. 17 p. 40	all all



MISSOURI ALL-STATE-BAND AUDITION SCALES

to be played at a minimum tempo of quarter note = 88

Piccolo

Chromatic Scale

The chromatic scale is written on three staves in 3/4 time. The first staff shows the ascending scale from C4 to C5. The second staff shows the descending scale from C5 to C4. The third staff shows the descending scale from C4 to C3. The notes are: C4, C#4, D4, D#4, E4, E#4, F4, F#4, G4, G#4, A4, A#4, B4, B#4, C5, B4, B#4, A4, A#4, G4, G#4, F4, F#4, E4, E#4, D4, D#4, C4, B3, B#3, A3, A#3, G3, G#3, F3, F#3, E3, E#3, D3, D#3, C3.

Missouri ASB Major Scales

C Major Scale

The C major scale is written on a single staff in 4/4 time. It consists of two measures: the first measure contains the ascending scale from C4 to C5, and the second measure contains the descending scale from C5 to C4. The notes are: C4, D4, E4, F4, G4, A4, B4, C5, B4, A4, G4, F4, E4, D4, C4.

G Major Scale

The G major scale is written on a single staff in 4/4 time. It consists of two measures: the first measure contains the ascending scale from G4 to G5, and the second measure contains the descending scale from G5 to G4. The notes are: G4, A4, B4, C5, D5, E5, F5, G5, F5, E5, D5, C5, B4, A4, G4.

D Major Scale

The D major scale is written on a single staff in 4/4 time. It consists of two measures: the first measure contains the ascending scale from D4 to D5, and the second measure contains the descending scale from D5 to D4. The notes are: D4, E4, F#4, G4, A4, B4, C5, D5, C5, B4, A4, G4, F#4, E4, D4.

A Major Scale

The A major scale is written on a single staff in 4/4 time. It consists of two measures: the first measure contains the ascending scale from A4 to A5, and the second measure contains the descending scale from A5 to A4. The notes are: A4, B4, C#4, D4, E4, F#4, G#4, A5, G#4, F#4, E4, D4, C#4, B4, A4.

E Major Scale**B Major Scale****Cb Major Scale****F# Major Scale****Gb Major Scale****C# Major Scale****Db Major Scale****Ab Major Scale**

E \flat Major Scale



B \flat Major Scale



F Major Scale



Missouri ASB Melodic Minor Scales

A Melodic Minor



E Melodic Minor

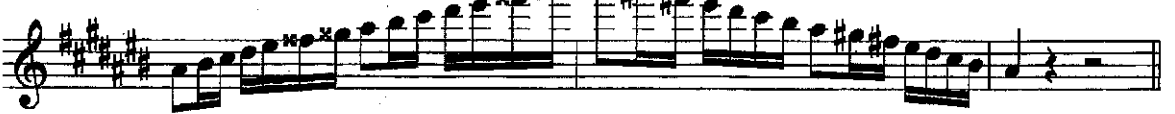
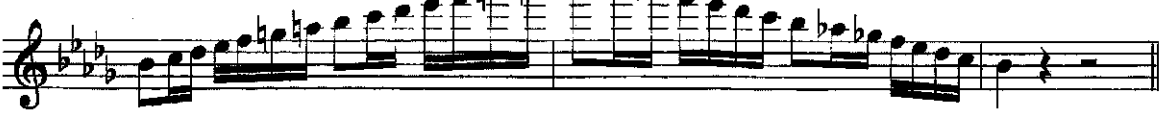
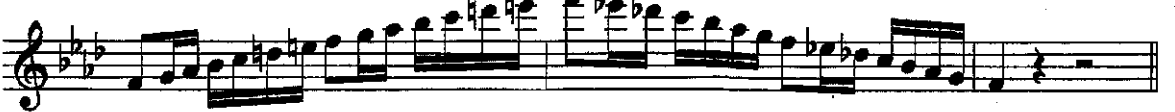


B Melodic Minor



F# Melodic Minor



C# Melodic Minor**G# Melodic Minor****A \flat Melodic Minor****D# Melodic Minor****E \flat Melodic Minor****A# Melodic Minor****B \flat Melodic Minor****F Melodic Minor**

C Melodic Minor



G Melodic Minor



D Melodic Minor





MISSOURI ALL-STATE-BAND AUDITION SCALES

to be played at a minimum tempo of quarter note = 88

Flute

Chromatic Scale

The chromatic scale is written on a single treble clef staff in 2/4 time. It consists of two lines of music. The first line contains the ascending scale from C4 to C5, with notes: C4, C#4, D4, D#4, E4, E#4, F4, F#4, G4, G#4, A4, A#4, B4, B#4, C5. The second line contains the descending scale from C5 to C4, with notes: C5, B#4, B4, A#4, A4, G#4, G4, F#4, F4, E#4, E4, D#4, D4, C#4, C4. The notes are beamed in groups of four.

Missouri ASB Major Scales

C Major Scale

The C major scale is written on a single treble clef staff in 4/4 time. It consists of two lines of music. The first line contains the ascending scale from C4 to C5, with notes: C4, D4, E4, F4, G4, A4, B4, C5. The second line contains the descending scale from C5 to C4, with notes: C5, B4, A4, G4, F4, E4, D4, C4. The notes are beamed in groups of four.

G Major Scale

The G major scale is written on a single treble clef staff in 4/4 time. It consists of two lines of music. The first line contains the ascending scale from G4 to G5, with notes: G4, A4, B4, C5, D5, E5, F5, G5. The second line contains the descending scale from G5 to G4, with notes: G5, F5, E5, D5, C5, B4, A4, G4. The notes are beamed in groups of four.

D Major Scale

The D major scale is written on a single treble clef staff in 4/4 time. It consists of two lines of music. The first line contains the ascending scale from D4 to D5, with notes: D4, E4, F#4, G4, A4, B4, C#5, D5. The second line contains the descending scale from D5 to D4, with notes: D5, C#5, B4, A4, G4, F#4, E4, D4. The notes are beamed in groups of four.

A Major Scale

The A major scale is written on a single treble clef staff in 4/4 time. It consists of two lines of music. The first line contains the ascending scale from A4 to A5, with notes: A4, B4, C#5, D5, E5, F#5, G#5, A5. The second line contains the descending scale from A5 to A4, with notes: A5, G#5, F#5, E5, D5, C#5, B4, A4. The notes are beamed in groups of four.

E Major Scale



B Major Scale



Cb Major Scale



F# Major Scale



Gb Major Scale



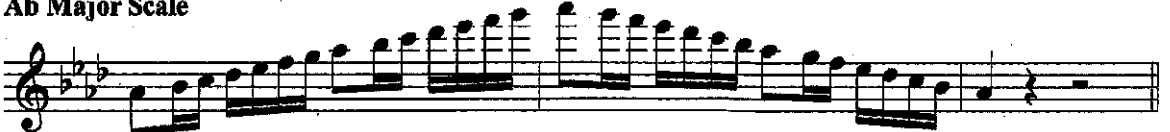
C# Major Scale



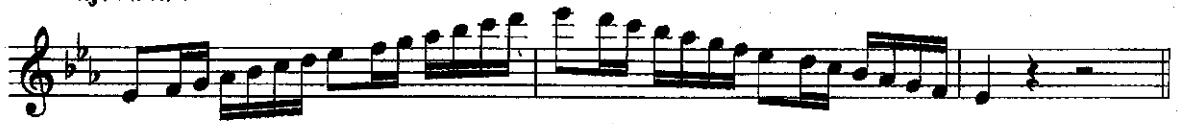
Db Major Scale



Ab Major Scale



E \flat Major Scale



B \flat Major Scale



F Major Scale



Missouri ASB Melodic Minor Scales

A Melodic Minor



E Melodic Minor



B Melodic Minor



F# Melodic Minor



C# Melodic Minor



G# Melodic Minor



A \flat Melodic Minor



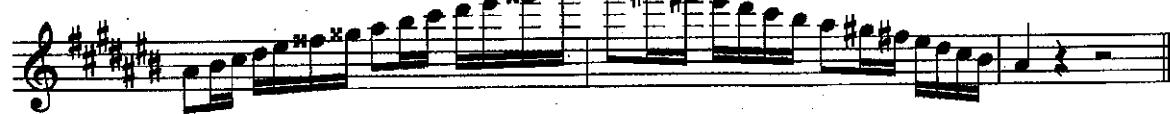
D# Melodic Minor



E \flat Melodic Minor



A# Melodic Minor



B \flat Melodic Minor



F Melodic Minor



C Melodic Minor



G Melodic Minor



D Melodic Minor

