

MISSOURI BANDMASTERS ASSOCIATION MISSOURI ALL-STATE BAND AUDITION MATERIALS

OBOE & ENGLISH HORN*

Scale: All scales are to be MEMORIZED.
Prepare them all slurred and tongued in sixteenth notes at quarter note = 88.
Scales should be performed ascending and descending. Scales given are the starting tone. DO NOT TRANSPOSE.

All scales are to be prepared from required scale sheet as written.

Chromatic: Perform the chromatic exactly as written.

Major Scales: C G D A E B/Cb F#/Gb C#/Db Ab Eb Bb F

Minor Scales: a e b f# c# g#/ab d#/eb a#/bb f c g d

Books: *Selected Studies for Oboe - Voxman/Rubank Publication*
Advanced Method for Oboe, Vol. 1 – Voxman & Gower/Rubank Publication

Set I (2020-2021)	Selected Studies	p. 6	F Major
	Advanced Method	p. 6	#6
		p. 6	#7
		p. 6	#8
		p. 36-37	#20

Set II (2021-2022)	Selected Studies	p. 8	d minor
	Advanced Method	p. 7	#13
		p. 10	#28
		p. 10	#29
		p.23	#5



Set III (2022-2023)	Selected Studies	p. 21	b minor
	Advanced Method	p. 9	#27
		p. 11	#37
		p. 11	#38
		p. 35	#18

Set IV (2023-2024)	Selected Studies	p. 20	D Major
	Advanced Method	p. 17	#66
		p. 15	#58
		p. 15	#59
		p. 42	#24

*The use of English Horn is on an “as needed basis.” Check at the All-State registration table to determine if the audition is needed.



MISSOURI ALL-STATE-BAND AUDITION SCALES

to be played at a minimum tempo of quarter note = 88

English Horn

Chromatic Scale

Musical notation for the Chromatic Scale, consisting of two staves. The first staff is in treble clef with a 4/4 time signature, showing an ascending chromatic scale from C4 to C5. The second staff is in bass clef, showing a descending chromatic scale from C5 to C4.

Missouri ASB Major Scales

C Major Scale

Musical notation for the C Major Scale, consisting of a single staff in treble clef with a 4/4 time signature, showing an ascending scale from C4 to C5.

G Major Scale

Musical notation for the G Major Scale, consisting of a single staff in treble clef with a 4/4 time signature and one sharp (F#), showing an ascending scale from G4 to G5.

D Major Scale

Musical notation for the D Major Scale, consisting of a single staff in treble clef with a 4/4 time signature and two sharps (F# and C#), showing an ascending scale from D4 to D5.

A Major Scale

Musical notation for the A Major Scale, consisting of a single staff in treble clef with a 4/4 time signature and three sharps (F#, C#, and G#), showing an ascending scale from A4 to A5.

E Major Scale**B Major Scale****Cb Major Scale****F# Major Scale****Gb Major Scale****C# Major Scale****Db Major Scale**

Ab Major Scale



Eb Major Scale



Bb Major Scale



F Major Scale



Missouri ASB Melodic Minor Scales

A Melodic Minor



E Melodic Minor



B Melodic Minor

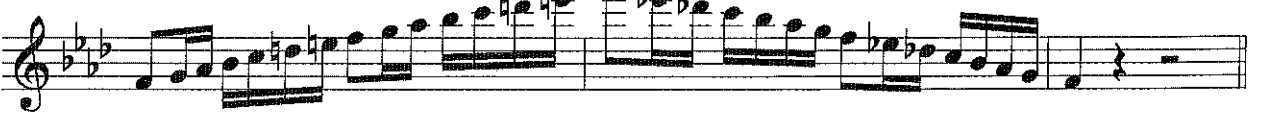


F# Melodic Minor**C# Melodic Minor****G# Melodic Minor****A \flat Melodic Minor****D# Melodic Minor****E \flat Melodic Minor****A# Melodic Minor**

Bb Melodic Minor



F Melodic Minor



C Melodic Minor



G Melodic Minor



D Melodic Minor

