

MISSOURI BANDMASTERS ASSOCIATION

MISSOURI ALL-STATE BAND AUDITION MATERIALS

BASSOON Sets II, III, IV

Scale: All scales are to be MEMORIZED.
 Prepare them all slurred and tongued in sixteenth notes at quarter note = 88.
 Scales should be performed ascending and descending. Scales given are the starting tone. DO NOT TRANSPOSE.

All scales are to be prepared from required scale sheet as written.

Chromatic: Perform the chromatic exactly as written.


Major Scales: C G D A E B/Cb F#/Gb C#/Db Ab Eb Bb F

Minor Scales: a e b f# c# g#/ab d#/eb a#/bb f c g d

Books: Practical Method for Bassoon – Julius Weissenborn/Carl Fischer Publication

Set I Practical Method (2020-2021)	p. 35 p. 43 p. 69 p. 81 p. 86	Allegro – first 3 lines first 4 lines #5 #2 #12 – first page only
---------------------------------------	---	---

Set II Practical Method (2021-2022)	p. 30 p. 40 p. 66 p. 82-83 p. 86	Allegro Moderato – lines 3, 4, 5, & 6 Poco Allegro – first 4 lines #2 #5 #11
--	--	--

 Set III Practical Method (2022-2023)	p. 41 p. 45 p. 62 p. 67 p. 81	Allegretto – lines 7, 8, 9, & 10 Allegro – lines 7, 8, 9, & 10 lines 1, 2, 3, & 4 #11 #1
---	---	--

Set IV Practical Method (2023-2024)	p. 31 p. 37 p. 47 p. 67 p. 82	Andante – lines 8, 9, & 10 Andante – lines 2, 3, 4, 5, & 6 Marcia – lines 7, 8, 9, & 10 #10 #4
--	---	--



MISSOURI ALL-STATE-BAND AUDITION SCALES

to be played at a minimum tempo of quarter note = 88

Bassoon

Chromatic Scale

Chromatic Scale

The chromatic scale is presented in three staves of music. The first staff shows the ascending scale from C2 to C3. The second staff shows the descending scale from C3 to C2. The third staff shows the ascending scale from C3 to C4. The notation includes sharp and flat accidentals to indicate the chromatic intervals. The time signature is 4/4.

Missouri ASB Major Scales

C Major Scale

The C Major scale is written on a single staff in bass clef, 4/4 time. It consists of a sequence of eighth notes ascending from C2 to C3, followed by a sequence of eighth notes descending from C3 to C2. The piece concludes with a whole note C2.

G Major Scale

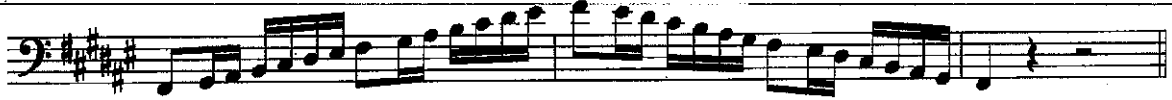
The G Major scale is written on a single staff in bass clef, 4/4 time. It consists of a sequence of eighth notes ascending from G2 to G3, followed by a sequence of eighth notes descending from G3 to G2. The piece concludes with a whole note G2.

D Major Scale

The D Major scale is written on a single staff in bass clef, 4/4 time. It consists of a sequence of eighth notes ascending from D2 to D3, followed by a sequence of eighth notes descending from D3 to D2. The piece concludes with a whole note D2.

A Major Scale

The A Major scale is written on a single staff in bass clef, 4/4 time. It consists of a sequence of eighth notes ascending from A2 to A3, followed by a sequence of eighth notes descending from A3 to A2. The piece concludes with a whole note A2.

E Major Scale**B Major Scale****Cb Major Scale****F# Major Scale****Gb major Scale****C# Major Scale****Db Major Scale****Ab Major Scale**

E_b Major Scale



B_b Major Scale



F Major Scale



A Melodic Minor



Missouri ASB Melodic Minor Scales

E Melodic Minor



B Melodic Minor



F# Melodic Minor



C# Melodic Minor



G# Melodic Minor



Ab Melodic Minor



D# Melodic Minor



Eb Melodic Minor



A# Melodic Minor



Bb Melodic Minor

Two staves of musical notation for the Bb Melodic Minor scale. The first staff shows the ascending scale from Bb2 to Bb6. The second staff shows the descending scale from Bb6 to Bb2. The key signature has two flats (Bb and Eb).

F Melodic Minor

One staff of musical notation for the F Melodic Minor scale, showing the ascending scale from F2 to F6. The key signature has two flats (Bb and Eb).

C Melodic Minor

Two staves of musical notation for the C Melodic Minor scale. The first staff shows the ascending scale from C2 to C6. The second staff shows the descending scale from C6 to C2. The key signature has no flats or sharps.

G Melodic Minor

One staff of musical notation for the G Melodic Minor scale, showing the ascending scale from G2 to G6. The key signature has one flat (Eb).

D Melodic Minor

One staff of musical notation for the D Melodic Minor scale, showing the ascending scale from D2 to D6. The key signature has two sharps (F# and C#).