

MISSOURI BANDMASTERS ASSOCIATION

MISSOURI ALL-STATE BAND AUDITION MATERIALS

Bb SOPRANO CLARINET Sets II, III, IV

Scale: All scales are to be MEMORIZED.
 Prepare them all slurred and tongued in sixteenth notes at quarter note = 88.
 Scales should be performed ascending and descending. Scales given are the starting tone. DO NOT TRANSPOSE.

All scales are to be prepared from required scale sheet as written.

Chromatic: Perform the chromatic exactly as written.

Major Scales: C G D A E B/Cb F#/Gb C#/Db Ab Eb Bb F

Minor Scales: a e b f# c# g#/ab d#/eb a#/bb f c g d

Books: *Thirty-two Etudes for Clarinet – C. Rose/Carl Fischer Publication*

Klose Method for Clarinet – Simeon Bellison (revised)/Carl Fischer Publication

Set I (2020-2021)	Thirty-Two Etudes	p. 20 p. 21	#20 – first 8 lines all
----------------------	-------------------	----------------	----------------------------

	Klose	p. 126 p. 128 p. 132	Ab Major lines 5, 6, & 7 #9
--	-------	----------------------------	-----------------------------------

Set II (2021-2022)	Thirty-two Etudes	p. 3 p. 23	#2 – first 6 ½ lines #23
-----------------------	-------------------	---------------	-----------------------------

	Klose	p. 127 p. 128 p. 129	E Major – line 5 lines 4, 8, 9, and bar 1 of 10 line 9, bar 2 thru line 10, bar 1
--	-------	----------------------------	---



Set III (2022-2023)	Thirty-two Etudes	p. 6 p. 24	#5 #24 – first 8 lines
------------------------	-------------------	---------------	---------------------------

	Klose	p. 127 p. 128 p. 129	A Major – line 7 line 10 last measure, line 11,12, & 13 line 10, bar 2 thru line 11, bar 1
--	-------	----------------------------	--

Set IV (2023-2024)	Thirty-two Etudes	p. 17 p. 26	#17 #26 – first 6 ½ lines
-----------------------	-------------------	----------------	------------------------------

	Klose	p. 127 p. 128 p. 129	B Major – line 2, bar 3 thru line 3, bar 3 lines 1, 2, & 3 line 8, bar 2 thru line 9, bar 1
--	-------	----------------------------	---



MISSOURI ALL-STATE-BAND AUDITION SCALES

to be played at a minimum tempo of quarter note = 88

Bb Soprano Clarinet

Chromatic Scale

A musical score for a chromatic scale in B-flat major, written for Bb Soprano Clarinet. It consists of three staves. The first staff shows the ascending scale from B-flat to B. The second staff shows the descending scale from B to B-flat. The third staff shows a more complex chromatic exercise, possibly a double chromatic scale, moving through various intervals and accidentals.

Missouri ASB Major Scales

C Major Scale

Musical notation for the C Major Scale in 4/4 time, written for Bb Soprano Clarinet. The scale is presented in a single staff, showing the ascending and descending lines.

G Major Scale

Musical notation for the G Major Scale in 4/4 time, written for Bb Soprano Clarinet. The scale is presented in a single staff, showing the ascending and descending lines.

D Major Scale

Musical notation for the D Major Scale in 4/4 time, written for Bb Soprano Clarinet. The scale is presented in a single staff, showing the ascending and descending lines.

A Major Scale

Musical notation for the A Major Scale in 4/4 time, written for Bb Soprano Clarinet. The scale is presented in a single staff, showing the ascending and descending lines.

E Major Scale



B Major Scale



Cb Major Scale



F# Major Scale



Gb Major Scale



C# Major Scale



Db Major Scale



Ab Major Scale



E \flat Major Scale



B \flat Major Scale



F Major Scale



Missour ASB Melodic Minor Scales

A Melodic Minor



E Melodic Minor



B Melodic Minor



F# Melodic Minor

Musical notation for the F# Melodic Minor scale, consisting of two staves. The first staff shows the ascending scale: F#4, G4, A4, B4, C#5, D5, E5, F#5. The second staff shows the descending scale: F#5, E5, D5, C#5, B4, A4, G4, F#4.

C# Melodic Minor

Musical notation for the C# Melodic Minor scale, consisting of one staff. The ascending scale is: C#4, D4, E4, F#4, G#4, A4, B4, C#5. The descending scale is: C#5, B4, A4, G#4, F#4, E4, D4, C#4.

G# Melodic Minor

Musical notation for the G# Melodic Minor scale, consisting of two staves. The first staff shows the ascending scale: G#4, A4, B4, C#5, D5, E5, F#5, G#5. The second staff shows the descending scale: G#5, F#5, E5, D5, C#5, B4, A4, G#4.

A \flat Melodic Minor

Musical notation for the A \flat Melodic Minor scale, consisting of two staves. The first staff shows the ascending scale: A \flat 4, B \flat 4, C \flat 5, D \flat 5, E \flat 5, F \flat 5, G \flat 5, A \flat 5. The second staff shows the descending scale: A \flat 5, G \flat 5, F \flat 5, E \flat 5, D \flat 5, C \flat 5, B \flat 4, A \flat 4.

D# Melodic Minor

Musical notation for the D# Melodic Minor scale, consisting of one staff. The ascending scale is: D#4, E4, F#4, G#4, A4, B4, C#5, D#5. The descending scale is: D#5, C#5, B4, A4, G#4, F#4, E4, D#4.

E \flat Melodic Minor

Musical notation for the E \flat Melodic Minor scale, consisting of one staff. The ascending scale is: E \flat 4, F \flat 4, G \flat 4, A \flat 4, B \flat 4, C \flat 5, D \flat 5, E \flat 5. The descending scale is: E \flat 5, D \flat 5, C \flat 5, B \flat 4, A \flat 4, G \flat 4, F \flat 4, E \flat 4.

A# Melodic Minor



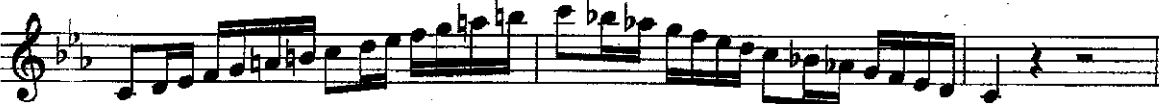
Bb Melodic Minor



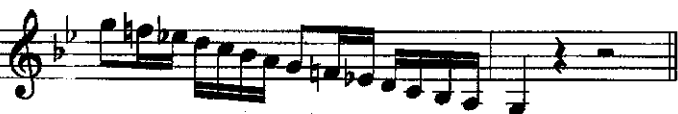
F Melodic Minor



C Melodic Minor



G Melodic Minor



D Melodic Minor

