

MISSOURI BANDMASTERS ASSOCIATION

MISSOURI ALL-STATE BAND AUDITION MATERIALS

Bb BASS CLARINET

Sets II, III, IV

Scale: All scales are to be MEMORIZED.

Prepare them all slurred and tongued in sixteenth notes at quarter note = 88.
Scales should be performed ascending and descending. Scales given are the starting tone. DO NOT TRANSPOSE.

All scales are to be prepared from required scale sheet as written.

Chromatic: Perform the chromatic exactly as written.

Major Scales: C G D A E B/Cb F#/Gb C#/Db Ab Eb Bb F

Minor Scales: a e b f# c# g#/ab d#/eb a#/bb f c g d

Books: *21 Foundation Studies for Alto and Bass Clarinet – Wm. Rhoads/Southern Pub.*

(Older edition of this book = page number different by minus 2)

Introducing the Alto or Bass Clarinet – Voxman/Rubank Publication

Set I (2020-21)	21 Foundation Studies	p. 29	#19
--------------------	-----------------------	-------	-----

Introducing	p. 14	#5
	p. 22	#3
	p. 24	#3
	p. 36	#5

Set II (2021-22)	21 Foundation Studies	p. 32	#21
---------------------	-----------------------	-------	-----

Introducing	p. 9	#4
	p. 17	#5
	p. 26-27	#5
	p. 37	#3



Set III (2022-23)	21 Foundation Studies	p. 21	#13
----------------------	-----------------------	-------	-----

Introducing	p. 11	#1
	p. 12	#5
	p. 15	#4
	p. 42	Pastorale

Set IV (2023-24)	21 Foundation Studies	p. 16	#9
---------------------	-----------------------	-------	----

Introducing	p. 13	#5
	p. 16	#5
	p. 20	#6
	p. 36	#2 slurred



MISSOURI ALL-STATE-BAND AUDITION SCALES

to be played at a minimum tempo of quarter note = 88

Bb Bass Clarinet

Chromatic Scale

The chromatic scale is presented in three staves. The first staff shows the ascending scale from C2 to C3. The second staff shows the descending scale from C3 to C2. The third staff shows the ascending scale from C3 to C4. The notes are written in a treble clef with a key signature of one flat (Bb).

Missouri ASB Major Scales

C Major Scale

The C Major Scale is written in a treble clef with a 4/4 time signature. It consists of a single staff showing the ascending and descending scales.

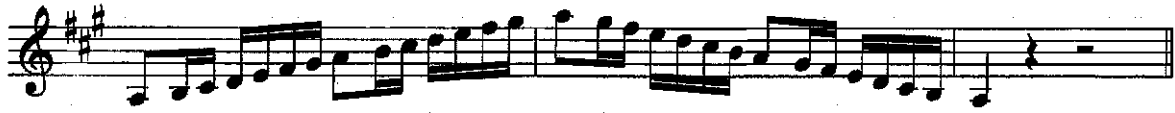
G Major Scale

The G Major Scale is written in a treble clef with a key signature of one sharp (F#) and a 4/4 time signature. It consists of a single staff showing the ascending and descending scales.

D Major Scale

The D Major Scale is written in a treble clef with a key signature of two sharps (F# and C#) and a 4/4 time signature. It consists of a single staff showing the ascending and descending scales.

A Major Scale



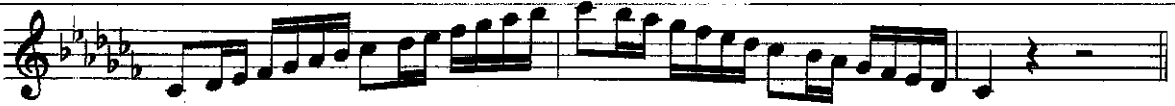
E Major Scale



B Major Scale



Cb Major Scale



F# Major Scale



Gb Major



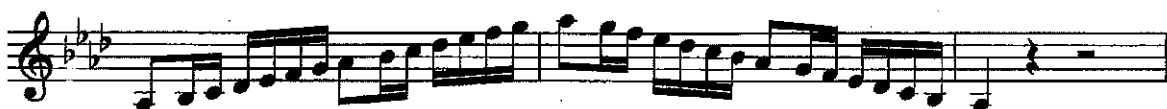
C# Major Scale



Db Major Scale



Ab Major Scale



Eb Major Scale



Bb Major Scale



F Major Scale



Missouri ASB Melodic Minor Scales

A Melodic Minor



E Melodic Minor



B Melodic Minor**F# Melodic Minor****C# Melodic Minor****G# Melodic Minor****A \flat Melodic Minor****D# Melodic Minor****E \flat Melodic Minor**

A# Melodic Minor



Musical notation for the A# Melodic Minor scale, written in treble clef with a key signature of three sharps (F#, C#, G#). The scale is presented as a single melodic line with a final whole note rest.

Bb Melodic Minor



Musical notation for the Bb Melodic Minor scale, written in treble clef with a key signature of two flats (Bb, Eb). The scale is presented as a single melodic line with a final whole note rest.

F Melodic Minor



Musical notation for the F Melodic Minor scale, written in treble clef with a key signature of two flats (Bb, Eb). The scale is presented as a single melodic line with a final whole note rest.

C Melodic Minor




Musical notation for the C Melodic Minor scale, written in treble clef with a key signature of two flats (Bb, Eb). The scale is presented as a single melodic line with a final whole note rest.

G Melodic Minor



Musical notation for the G Melodic Minor scale, written in treble clef with a key signature of one flat (Bb). The scale is presented as a single melodic line with a final whole note rest.

D Melodic Minor



Musical notation for the D Melodic Minor scale, written in treble clef with a key signature of one flat (Bb). The scale is presented as a single melodic line with a final whole note rest.