

MISSOURI BANDMASTERS ASSOCIATION

MISSOURI ALL-STATE BAND AUDITION MATERIALS

TENOR SAXOPHONE

Sets II, III, IV

Scale: All scales are to be MEMORIZED.

Prepare them all slurred and tongued in sixteenth notes at quarter note = 88.
Scales should be performed ascending and descending. Scales given are the starting tone. DO NOT TRANSPOSE.

All scales are to be prepared from required scale sheet as written.

Chromatic: Perform the chromatic exactly as written.

Major Scales: C G D A E B/Cb F#/Gb C#/Db Ab Eb Bb F

Minor Scales: a e b f# c# g#/ab d#/eb a#/bb f c g d

Books: *Selected Studies for Saxophone – Voxman/Rubank Publication*

Universal-Prescott, 1st and 2nd Year – Carl Fischer Publication

Set I (2020-21)	Selected Studies	p. 9	all
		p. 29	all
	Universal-Prescott	p. 42	#79
		p. 209	#8
		p. 209	#10
		p. 212	#4
		p. 214	last 3 lines

Set II (2021-22)	Selected Studies	p. 5	Mod. Assai
		p. 7	all
	Universal-Prescott	p. 44	#88
		p. 210	#16
		p. 210	#17
		p. 213	#11
		p. 214	lines 7, 8, 9, & 10



Set III (2022-23)	Selected Studies	p. 8	Andante
		p. 15	Vivace
	Universal-Prescott	p. 44	#86
		p. 210	#15
		p. 210	#18
		p. 212	#6
		p. 214	lines 4, 5, & 6

Set IV (2023-24)	Selected Studies	p. 3	all
		p. 6	all
	Universal-Prescott	p. 42	#78
		p. 208	#3
		p. 208	#5
		p. 212	#3
		p. 214	lines 1, 2, & 3



MISSOURI ALL-STATE-BAND AUDITION SCALES

to be played at a minimum tempo of quarter note = 88

Saxophones

Chromatic Scale

The chromatic scale is written on two staves in 4/4 time. The first staff shows the ascending scale from C4 to C5, and the second staff shows the descending scale from C5 to C4. Each note is beamed together with the next, and the key signature changes for each note.

Missouri ASB Major Scales

C Major Scale

The C major scale is written on a single staff in 4/4 time, starting on middle C (C4) and ending on the next C (C5). The notes are beamed in groups of four.

G Major Scale

The G major scale is written on a single staff in 4/4 time, starting on G4 and ending on G5. The key signature has one sharp (F#). The notes are beamed in groups of four.

D Major Scale

The D major scale is written on a single staff in 4/4 time, starting on D4 and ending on D5. The key signature has two sharps (F# and C#). The notes are beamed in groups of four.

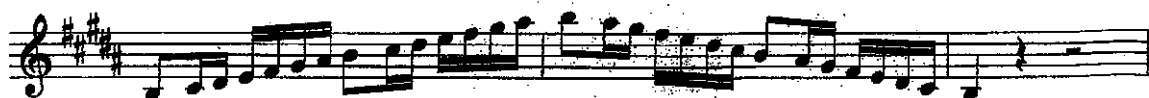
A Major Scale

The A major scale is written on a single staff in 4/4 time, starting on A4 and ending on A5. The key signature has three sharps (F#, C#, and G#). The notes are beamed in groups of four.

E Major Scale

The E major scale is written on a single staff in 4/4 time, starting on E4 and ending on E5. The key signature has four sharps (F#, C#, G#, and D#). The notes are beamed in groups of four.

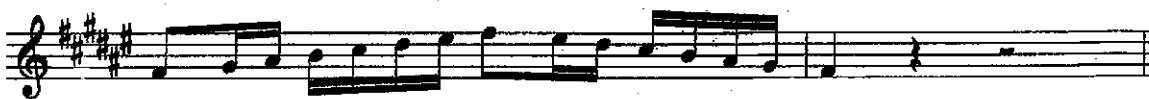
B Major Scale



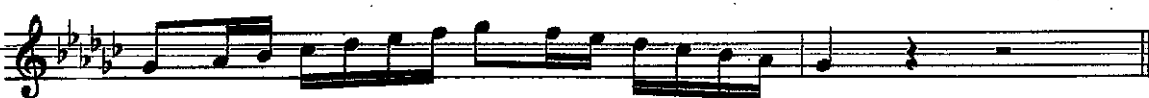
Cb Major Scale



F# Major Scale



Gb major Scale



C# Major Scale



Db Major Scale



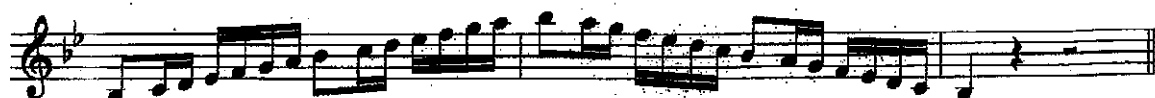
Ab Major Scale



Eb Major Scale



Bb Major Scale



F Major Scale



Missouri ASB Melodic Minor Scales

A Melodic Minor



E Melodic Minor



B Melodic Minor



F# Melodic Minor



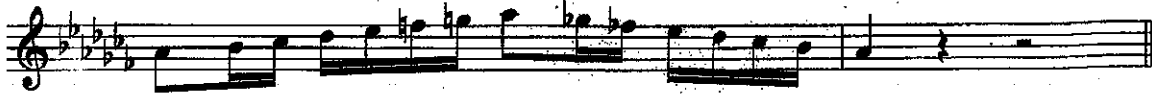
C# Melodic Minor



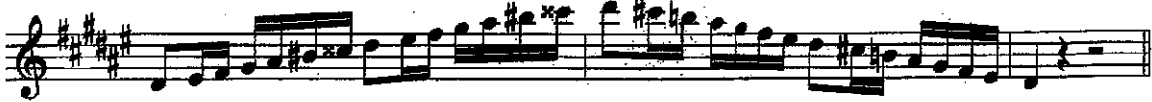
G# Melodic Minor



Ab Melodic Minor



D# Melodic Minor



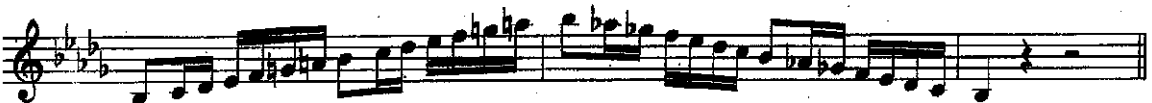
Eb Melodic Minor



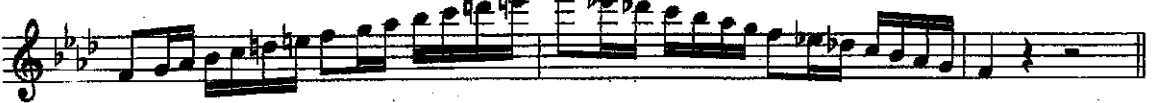
A# Melodic Minor



Bb Melodic Minor



F Melodic Minor



C Melodic Minor



G Melodic Minor



D Melodic Minor

