

MISSOURI BANDMASTERS ASSOCIATION

MISSOURI ALL-STATE BAND AUDITION MATERIALS

BARITONE SAXOPHONE Sets II, III, IV

Scale: All scales are to be MEMORIZED.
 Prepare them all slurred and tongued in sixteenth notes at quarter note = 88.
 Scales should be performed ascending and descending. Scales given are the starting tone. DO NOT TRANSPOSE.

All scales are to be prepared from required scale sheet as written.

Chromatic: Perform the chromatic exactly as written.

Major Scales: C G D A E B/Cb F#/Gb C#/Db Ab Eb Bb F


Minor Scales: a e b f# c# g#/ab d#/eb a#/bb f c g d

Books: *Selected Studies for Saxophone – Voxman/Rubank Publication*

Universal-Prescott, 1st and 2nd Year – Carl Fischer Publication

Set I (2020-21)	Selected Studies	p. 5	Mod. Assai
		p. 7	all
	Universal-Prescott	p. 44	#88
		p. 210	#16
		p. 210	#17
		p. 213	#11
		p. 214	lines 7, 8, 9, & 10

Set II (2021-22)	Selected Studies	p. 8	Andante
		p. 15	Vivace
	Universal-Prescott	p. 44	#86
		p. 210	#15
		p. 210	#18
		p. 212	#3
		p. 214	lines 4, 5, & 6

	Set III (2022-23)	Selected Studies	p. 3	all
			p. 6	all
		Universal-Prescott	p. 42	#78
			p. 208	#4
			p. 209	#12
			p. 212	#6
		p. 214	lines 1, 2, & 3	

Set IV (2023-24)	Selected Studies	p. 9	all
		p. 29	all
	Selected Studies	p. 42	#79
		p. 209	#8
		p. 209	#9
		p. 212	#4
		p. 214	last 3 lines



MISSOURI ALL-STATE-BAND AUDITION SCALES

to be played at a minimum tempo of quarter note = 88

Saxophones

Chromatic Scale

Musical notation for the Chromatic Scale, consisting of two staves. The first staff shows the ascending scale from C4 to C5, and the second staff shows the descending scale from C5 to C4. The notes are: C, C#, D, D#, E, E#, F, F#, G, G#, A, A#, B, B#, C.

Missouri ASB Major Scales

C Major Scale

Musical notation for the C Major Scale, one staff. The notes are: C, D, E, F, G, A, B, C, B, A, G, F, E, D, C.

G Major Scale

Musical notation for the G Major Scale, one staff. The notes are: G, A, B, C, D, E, F#, G, F#, E, D, C, B, A, G.

D Major Scale

Musical notation for the D Major Scale, one staff. The notes are: D, E, F#, G, A, B, C#, D, C#, B, A, G, F#, E, D.

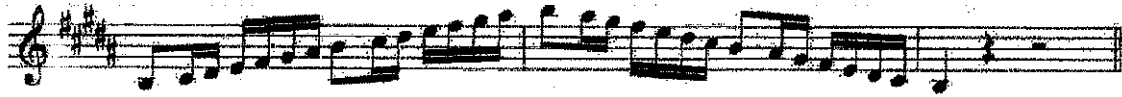
A Major Scale

Musical notation for the A Major Scale, one staff. The notes are: A, B, C, D, E, F#, G, A, G, F#, E, D, C, B, A.

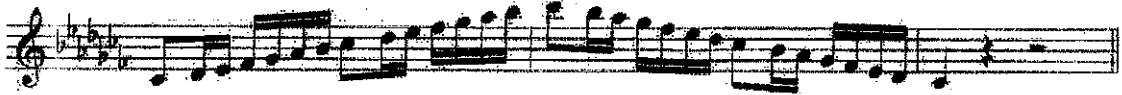
E Major Scale

Musical notation for the E Major Scale, one staff. The notes are: E, F#, G, A, B, C, D, E, D, C, B, A, G, F#, E.

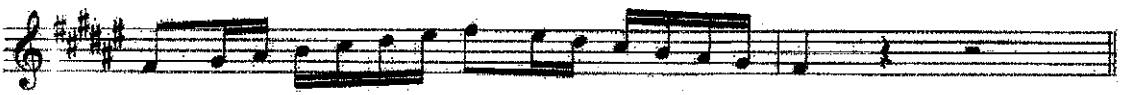
B Major Scale



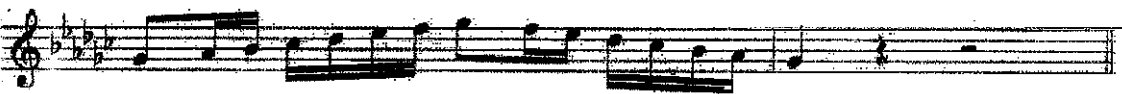
Cb Major Scale



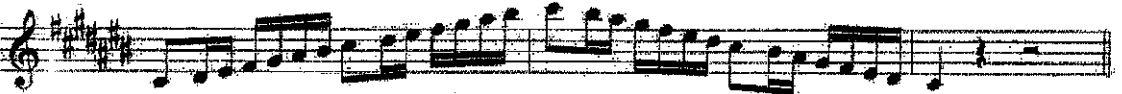
F# Major Scale



Gb major Scale



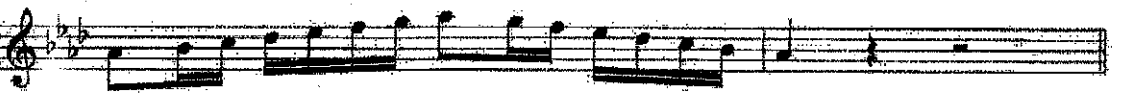
C# Major Scale



Db Major Scale



Ab Major Scale



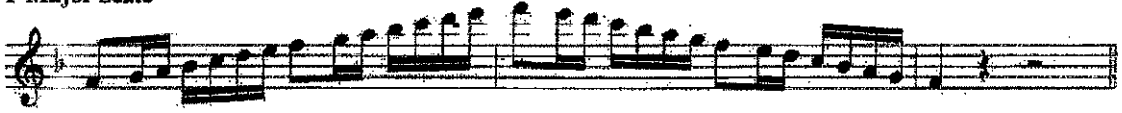
Eb Major Scale



Bb Major Scale



F Major Scale



Missouri ASB Melodic Minor Scales

A Melodic Minor



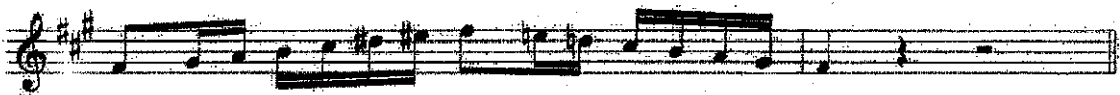
E Melodic Minor



B Melodic Minor



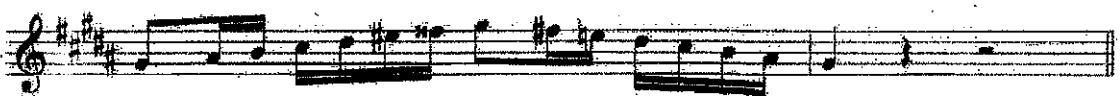
F# Melodic Minor



C# Melodic Minor



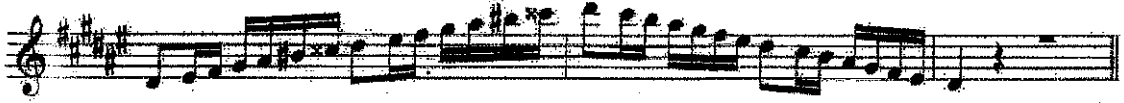
G# Melodic Minor



Ab Melodic Minor



D# Melodic Minor



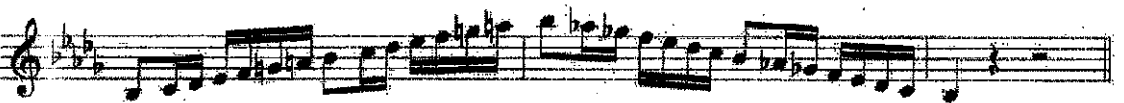
Eb Melodic Minor



A# Melodic Minor



Bb Melodic Minor



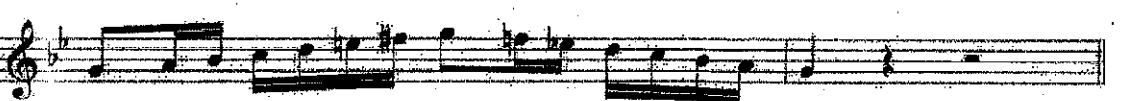
F Melodic Minor



C Melodic Minor



G Melodic Minor



D Melodic Minor

