

# MISSOURI BANDMASTERS ASSOCIATION MISSOURI ALL-STATE BAND AUDITION MATERIALS

TRUMPET & CORNET

Sets II, III, IV

Scale: All scales are to be MEMORIZED.

Prepare them all slurred and tongued in sixteenth notes at quarter note = 88.  
Scales should be performed ascending and descending. Scales given are the starting tone. DO NOT TRANSPOSE.

**All scales are to be prepared from required scale sheet as written.**

Chromatic: Perform the chromatic exactly as written.


Major Scales: C G D A E B/Cb F#/Gb C#/Db Ab Eb Bb F

Minor Scales: a e b f# c# g#/ab d#/eb a#/bb f c g d

Books: *Arban Complete Conservatory Method for Trumpet, #021 – Goldman (edited)/  
Carl Fischer Publication*

Set I (2020-21)	Arban	p. 21	#47
		p. 24	#9
		p. 56	#69 – lines 3, 9, & 11 (Bb, E, D)
		p. 189	#138
		p. 221	#102
		p. 285	#1 – first 7 lines (to key change)

Set II (2021-22)	Arban	p. 22	#48
		p. 46-47	#28 – all
		p. 125	#1 – lines 5, 11, & 13 (E, Bb, C)
		p. 190	#142
		p. 205	#53
		p. 290	#6 – first 6 lines (to key change)

	Set III (2022-23)	Arban	p. 22	#49
			p. 33	#31
			p. 56	#69 – lines 2, 10, & 12 (F, A, G)
			p. 189	#139
			p. 206	#57
			p. 293	#9 – first 5 lines

Set IV (2023-24)	Arban	p. 22	#50
		p. 47	#29 – all
		p. 125	#1 – lines 3, 8, & 12 (D, G, B)
		p. 190	#143
		p. 213	#76
		p. 287	#3 – first 7 lines (to key change)



# MISSOURI ALL-STATE-BAND AUDITION SCALES

to be played at a minimum tempo of quarter note = 88

Trumpet

## Chromatic Scale

The chromatic scale is presented in two staves. The first staff shows the ascending scale from C4 to C5, with each note marked with a sharp sign. The second staff shows the descending scale from C5 to C4, with each note marked with a flat sign. The notes are: C, C#, C#, D, D#, D#, E, E#, E#, F, F#, F#, G, G#, G#, A, A#, A#, B, B#, B#, C.

## Missouri ASB Major Scales

### C Major Scale

The C major scale is written on a single staff in 4/4 time. The notes are: C, D, E, F, G, A, B, C, D, E, F, G, A, B, C. The scale is played in a rhythmic pattern of quarter notes.

### G Major Scale

The G major scale is written on a single staff in 4/4 time. The notes are: G, A, B, C, D, E, F#, G, A, B, C, D, E, F#, G. The scale is played in a rhythmic pattern of quarter notes.

### D Major Scale

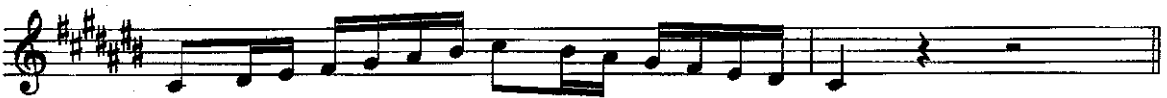
The D major scale is written on a single staff in 4/4 time. The notes are: D, E, F#, G, A, B, C, D, E, F#, G, A, B, C, D. The scale is played in a rhythmic pattern of quarter notes.

### A Major Scale

The A major scale is written on a single staff in 4/4 time. The notes are: A, B, C, D, E, F#, G, A, B, C, D, E, F#, A. The scale is played in a rhythmic pattern of quarter notes.

### E Major Scale

The E major scale is written on a single staff in 4/4 time. The notes are: E, F#, G, A, B, C, D, E, F#, G, A, B, C, D, E. The scale is played in a rhythmic pattern of quarter notes.

**B Major Scale****Cb Major Scale****F# Major Scale****Gb Major Scale****C# Major Scale****Db Major Scale****Ab Major Scale****Eb Major Scale**

**Bb Major Scale**



**F Major Scale**

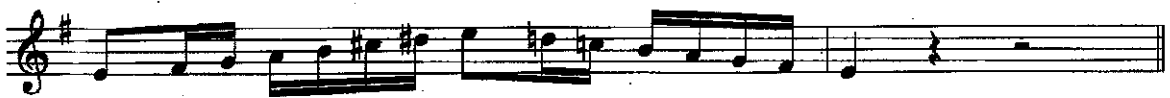


**Missouri ASB Melodic Minor Scales**

**A Melodic Minor**



**E Melodic Minor**



**B Melodic Minor**

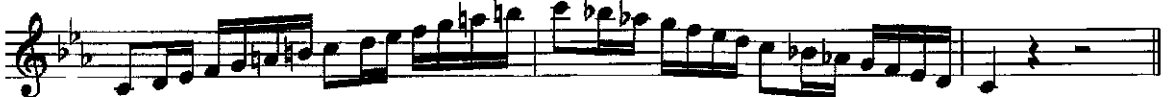


**F# Melodic Minor**

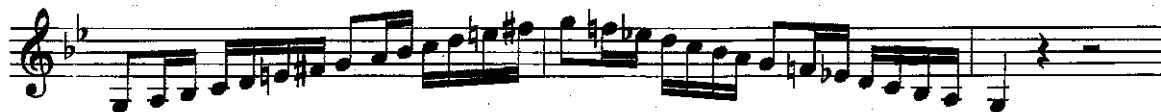


**C# Melodic Minor**



**G# Melodic Minor****Ab Melodic Minor****D# Melodic Minor****Eb Melodic Minor****A# Melodic Minor****Bb Melodic Minor****F Melodic Minor****C Melodic Minor**

**G Melodic Minor**



**D Melodic Minor**

