

MISSOURI BANDMASTERS ASSOCIATION MISSOURI ALL-STATE BAND AUDITION MATERIALS

HORN Sets II, III, IV

Scale: All scales are to be MEMORIZED.

Prepare them all slurred and tongued in sixteenth notes at quarter note = 88.

Scales should be performed ascending and descending. Scales given are the starting tone. DO NOT TRANSPOSE.

All scales are to be prepared from required scale sheet as written.

Chromatic: Perform the chromatic exactly as written.

Major Scales: C G D A E B/Cb F#/Gb C#/Db Ab Eb Bb F

Minor Scales: a e b f# c# g#/ab d#/eb a#/bb f c g d

Books: *Pottag-Hovey Method for French Horn, Book 2 – Warner Brothers*

***60 Selected Studies for French Horn, Book 1 – C. Kopprasch/Carl Fischer Pub.*

Preparatory Melodies to Solo Work for French Horn – Pottag (edited)/Belwin Pub.

****Kalmus edition (newest edition) has the following changes:**


Set II: Page 12 #17 – Kalmus ed. Has a piano dynamic marking instead of a forte in m29. Play FORTE.

Set III: Page 8 #12 – CF has a single hash mark at the end of m15. Kalmus does not.

Set IV: Page 13 #19 – No dynamic marking in m21. CF has a piano marking. Please ADD piano marking.

| | | | |
|--------------------|----------------------|------------------|-----------------|
| Set I (2020-21) | Pottag-Hovey | p. 31 | #128 |
| | 60 Selected Studies | p. 6 p. 20-21 | #8 #30 – all |
| | Preparatory Melodies | p. 22 | #56 |

| | | | |
|---------------------|----------------------|---------------|--|
| Set II (2021-22) | Pottag-Hovey | p. 11 | #40 |
| | 60 Selected Studies | p. 4 p. 12 | #3 #17 ** see changes in Kalmus Edition |
| | Preparatory Melodies | p. 17 | #43 |

| | | | |
|--|----------------------|-----------------|---|
|  Set III (2022-23) | Pottag-Hovey | p. 39 | #162 |
| | 60 Selected Studies | p. 10 p. 8-9 | #14 #12 – all ** see changes in Kalmus Edition |
| | Preparatory Melodies | p. 3 | #5 |

| | | | |
|---------------------|----------------------|---------------|--|
| Set IV (2023-24) | Pottag-Hovey | p. 23 | #91 |
| | 60 Selected Studies | p. 5 p. 13 | #6 #19 ** see changes in Kalmus Edition |
| | Preparatory Melodies | p. 27 | #67 |



MISSOURI ALL-STATE-BAND AUDITION SCALES

to be played at a minimum tempo of quarter note = 88

Horn

Chromatic Scale

The chromatic scale is written on a single treble clef staff in 3/4 time. It consists of two lines of music. The first line shows the ascending scale from C4 to C5, with each note marked with a sharp sign. The second line shows the descending scale from C5 to C4, with each note marked with a flat sign. The notes are: C4, C#4, D4, D#4, E4, E#4, F4, F#4, G4, G#4, A4, A#4, B4, B#4, C5, B4, B#4, A4, A#4, G4, G#4, F4, F#4, E4, E#4, D4, D#4, C#4, C4.

Missouri ASB Major Scales

C Major Scale

The C major scale is written on a single treble clef staff in 4/4 time. It consists of one line of music showing the ascending and descending scales. The notes are: C4, D4, E4, F4, G4, A4, B4, C5, B4, A4, G4, F4, E4, D4, C4.

G Major Scale

The G major scale is written on a single treble clef staff in 4/4 time. It consists of one line of music showing the ascending and descending scales. The notes are: G4, A4, B4, C5, B4, A4, G4, F#4, E4, D4, C4, B3, A3, G4.

D Major Scale

The D major scale is written on a single treble clef staff in 4/4 time. It consists of one line of music showing the ascending and descending scales. The notes are: D4, E4, F#4, G4, A4, B4, C5, B4, A4, G4, F#4, E4, D4, C#4, B3, A3, D4.

A Major Scale

The A major scale is written on a single treble clef staff in 4/4 time. It consists of one line of music showing the ascending and descending scales. The notes are: A4, B4, C#5, D5, E5, F#5, G5, F#5, E5, D5, C#5, B4, A4, G#4, F#4, A4.

E Major Scale



B Major Scale



Cb Major Scale



F# Major Scale



Gb Major



C# Major Scale



Db Major Scale



Ab Major Scale



Eb Major Scale



Bb Major Scale



F Major Scale



Missouri ASB Melodic Minor Scales

A Melodic Minor



E Melodic Minor



B Melodic Minor



F# Melodic Minor



C# Melodic Minor



G# Melodic Minor



A \flat Melodic Minor



D# Melodic Minor



E \flat Melodic Minor



A# Melodic Minor



Bb Melodic Minor



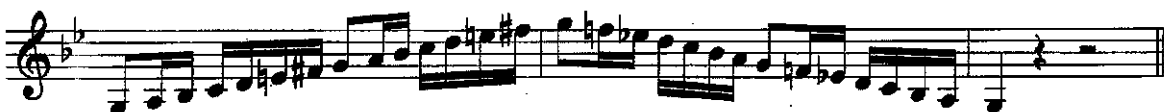
F Melodic Minor



C Melodic Minor



G Melodic Minor



D Melodic Minor

