

MISSOURI BANDMASTERS ASSOCIATION

MISSOURI ALL-STATE BAND AUDITION MATERIALS

BASS CLEF BARITONE

Sets II, III, IV

Scale: All scales are to be MEMORIZED.

Prepare them all slurred and tongued in sixteenth notes at quarter note = 88.
Scales should be performed ascending and descending. Scales given are the starting tone. DO NOT TRANSPOSE.


All scales are to be prepared from required scale sheet as written.

Chromatic: Perform the chromatic exactly as written.

Major Scales: C G D A E B/Cb F#/Gb C#/Db Ab Eb Bb F

Minor Scales: a e b f# c# g#/ab d#/eb a#/bb f c g d

Books: *Arban Complete Conservatory Method for Trombone, #023 – Mantia (edited)/
Carl Fischer Publication*

| | | | |
|--|-------|--------|--|
| Set I (2020-21) | Arban | p. 29 | #48 |
| | | p. 52 | #28 |
| | | p. 126 | #1 – lines 1, 5, & 11 (Bb, D, Ab) |
| | | p. 202 | #142 |
| | | p. 211 | #6 – first 7 lines (to key change) |
| | | p. 252 | #10 – first 5 lines |
| <hr/> | | | |
| Set II (2021-22) | Arban | p. 29 | #49 |
| | | p. 40 | #31 |
| | | p. 61 | #69 – lines 2, 10, & 12 (Eb, G, F) |
| | | p. 201 | #139 |
| | | p. 215 | #9 – first 6 lines |
| | | p. 244 | #7 – lines 8, 9, 10, 11, & 12 |
| <hr/> | | | |
|  Set III (2022-23) | Arban | p. 29 | #50 |
| | | p. 52 | #29 |
| | | p. 126 | #1 – lines 3, 8, & 12 (C, F, A) |
| | | p. 202 | #143 |
| | | p. 231 | #3 – first 8 lines |
| | | p. 225 | #1 – lines 8, 9, & 10 (observe repeat) |
| <hr/> | | | |
| Set IV (2023-24) | Arban | p. 28 | #47 |
| | | p. 31 | #9 |
| | | p. 61 | #69 – lines 3, 9, & 11 (Ab,D,C) |
| | | p. 201 | #138 |
| | | p. 204 | #1 – first 8 lines (to key change) |
| | | p. 236 | #5 – lines 5, 6, 7, & 8 |



MISSOURI ALL-STATE-BAND AUDITION SCALES

to be played at a minimum tempo of quarter note = 88

Euphonium
Bass Clef

Chromatic Scale

A musical staff in bass clef with a 4/4 time signature. The scale consists of two lines of eighth notes. The first line starts on C2 and ascends chromatically to Bb3. The second line starts on Bb3 and descends chromatically to C2. The notes are: C2, C#2, D2, D#2, E2, E#2, F2, F#2, G2, G#2, A2, A#2, Bb2, B2, Bb3, B2, Ab2, Gb2, Fb2, E2, D2, C2.

Missouri ASB Major Scales

C Major Scale

A musical staff in bass clef. The scale consists of two lines of eighth notes. The first line starts on C2 and ascends to G2. The second line starts on G2 and descends to C2. The notes are: C2, D2, E2, F2, G2, F2, E2, D2, C2.

G Major Scale

A musical staff in bass clef with one sharp (F#). The scale consists of two lines of eighth notes. The first line starts on G2 and ascends to D3. The second line starts on D3 and descends to G2. The notes are: G2, A2, B2, C3, D3, C3, B2, A2, G2.

D Major Scale

A musical staff in bass clef with two sharps (F# and C#). The scale consists of two lines of eighth notes. The first line starts on D2 and ascends to A2. The second line starts on A2 and descends to D2. The notes are: D2, E2, F#2, G2, A2, G2, F#2, E2, D2.

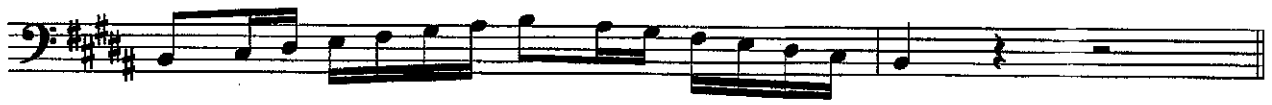
A Major Scale

A musical staff in bass clef with three sharps (F#, C#, and G#). The scale consists of two lines of eighth notes. The first line starts on A2 and ascends to E3. The second line starts on E3 and descends to A2. The notes are: A2, B2, C#2, D3, E3, D3, C#2, B2, A2.

E Major Scale

A musical staff in bass clef with four sharps (F#, C#, G#, and D#). The scale consists of two lines of eighth notes. The first line starts on E2 and ascends to B2. The second line starts on B2 and descends to E2. The notes are: E2, F#2, G#2, A2, B2, A2, G#2, F#2, E2.

B Major Scale



Cb Major Scale



F# Major Scale



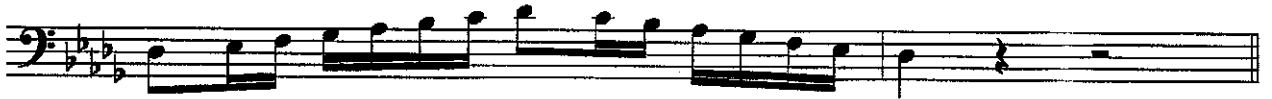
Gb Major Scale



C# Major Scale



Db Major Scale



Ab Major Scale



Eb Major Scale



Bb Major Scale



F Major Scale



Missouri ASB Melodic Minor Scales

A Melodic Minor



E Melodic Minor



B Melodic Minor



F# Melodic Minor



C# Melodic Minor



G# Melodic Minor

Musical notation for the G# Melodic Minor scale in bass clef. The scale is written in a single line, starting on G#2 and ending on G#3. The notes are G#, A, B, C, D, E, F#, G#, A, B, C, D, E, F#, G#. The key signature has three sharps (F#, C#, G#).

A^b Melodic Minor

Musical notation for the A^b Melodic Minor scale in bass clef. The scale is written in a single line, starting on A^b2 and ending on A^b3. The notes are A^b, B^b, C, D, E, F, G, A^b, B^b, C, D, E, F, G, A^b. The key signature has three flats (B^b, E^b, A^b).

D# Melodic Minor

Musical notation for the D# Melodic Minor scale in bass clef. The scale is written in a single line, starting on D#2 and ending on D#3. The notes are D#, E, F, G, A, B, C, D#, E, F, G, A, B, C, D#. The key signature has four sharps (F#, C#, G#, D#).

E^b Melodic Minor

Musical notation for the E^b Melodic Minor scale in bass clef. The scale is written in a single line, starting on E^b2 and ending on E^b3. The notes are E^b, F, G, A, B, C, D, E^b, F, G, A, B, C, D, E^b. The key signature has two flats (B^b, E^b).

A# Melodic Minor

Musical notation for the A# Melodic Minor scale in bass clef. The scale is written in a single line, starting on A#2 and ending on A#3. The notes are A#, B, C, D, E, F, G, A#, B, C, D, E, F, G, A#. The key signature has four sharps (F#, C#, G#, D#).

B^b Melodic Minor

Musical notation for the B^b Melodic Minor scale in bass clef. The scale is written in a single line, starting on B^b2 and ending on B^b3. The notes are B^b, C, D, E, F, G, A, B^b, C, D, E, F, G, A, B^b. The key signature has two flats (B^b, E^b).

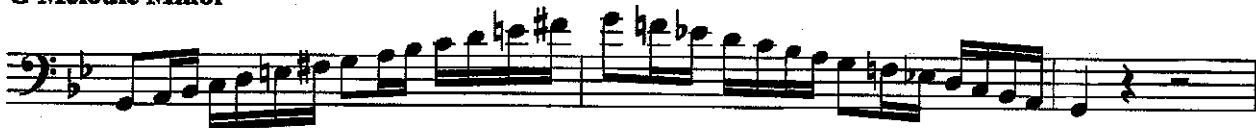
F Melodic Minor

Musical notation for the F Melodic Minor scale in bass clef. The scale is written in a single line, starting on F2 and ending on F3. The notes are F, G, A, B, C, D, E, F, G, A, B, C, D, E, F. The key signature has one flat (B^b).

C Melodic Minor

Musical notation for the C Melodic Minor scale in bass clef. The scale is written in a single line, starting on C2 and ending on C3. The notes are C, D, E, F, G, A, B, C, D, E, F, G, A, B, C. The key signature has no sharps or flats.

G Melodic Minor



D Melodic Minor

