

MISSOURI BANDMASTERS ASSOCIATION

MISSOURI ALL-STATE BAND AUDITION MATERIALS

TUBA Sets II, III, IV

Scale: All scales are to be MEMORIZED.
 Prepare them all slurred and tongued in sixteenth notes at quarter note = 88.
 Scales should be performed ascending and descending. Scales given are the starting tone. DO NOT TRANSPOSE.

All scales are to be prepared from required scale sheet as written.

Chromatic: Perform the chromatic exactly as written.

Major Scales: C G D A E B/C \flat F \sharp /G \flat C \sharp /D \flat Ab Eb B \flat F

Minor Scales: a e b f \sharp c \sharp g \sharp /a \flat d \sharp /e \flat a \sharp /b \flat f c g d

Books: *Advanced Method for Tuba, Vol. II – Voxman/Rubank Publication*


Practical Studies for Tuba, Book II – Getchell/Belwin Publication

Set I (2020-21)	Advanced Method	p. 11 p. 21 p. 43 p. 44	#12 (tongue 2, slur 2) #58 #26 #28
--------------------	-----------------	----------------------------------	---

	Practical Studies	p. 11 p. 31	#84 #114
--	-------------------	----------------	-------------

Set II (2021-22)	Advanced Method	p. 23 p. 30 p. 51 p. 54-55	#65 (slur 2, tongue 2) #1 #12 #20 – all
---------------------	-----------------	-------------------------------------	--

	Practical Studies	p. 8 p. 27	#78 #110
--	-------------------	---------------	-------------

 Set III (2022-23)	Advanced Method	p. 20 p. 33 p. 36 p. 41	#50 (tongue 2, slur 2) #7 #12 #23
--	-----------------	----------------------------------	--

	Practical Studies	p. 12 p. 26	#86 #109
--	-------------------	----------------	-------------

Set IV (2023-24)	Advanced Method	p. 15 p. 32 p. 38 p. 41	#32 (slur 3, tongue 3) #5 #17 #22
---------------------	-----------------	----------------------------------	--

	Practical Studies	p. 11 p. 19	#83 #97
--	-------------------	----------------	------------

MISSOURI BANDMASTERS ASSOCIATION MISSOURI ALL-STATE BAND AUDITION MATERIALS

TUBA Set I

Scale: All scales are to be MEMORIZED.
Prepare them all slurred and tongued in sixteenth notes at quarter note = 88.
Scales should be performed ascending and descending. Scales given are the starting tone. DO NOT TRANSPOSE.

All scales are to be prepared from required scale sheet as written.

Chromatic: Perform the chromatic exactly as written.

Major Scales: C G D A E Ab Eb Bb F

Minor Scales: a e b f# c# f c g d

Books: *Advanced Method for Tuba, Vol. II - Voxman/Rubank Publication*
Practical Studies for Tuba, Book II - Getchel/Belwin Publication

For set I only (2020-2021), we will use only 9 major and 9 melodic minor scales. All 12 major scales will begin with set II (2021-2022).

Set I (2020-21)	Advanced Method	p. 11	#12 (tongue 2, slur 2)
		p. 21	#58
		p. 43	#26
		p. 44	#28
	Practical Studies	p. 11	#84
		p. 31	#114



MISSOURI ALL-STATE-BAND AUDITION SCALES

to be played at a minimum tempo of quarter note = 88

Tuba

Chromatic Scale

The chromatic scale is presented in two staves of music. The first staff begins with a bass clef and a 4/4 time signature, followed by a sequence of quarter notes ascending chromatically from C2 to C4. The second staff continues the sequence, descending chromatically from C4 back to C2.

Missouri ASB Major Scales

C Major Scale

The C major scale is written on a single staff with a bass clef. It consists of a sequence of quarter notes ascending from C2 to C4, followed by a quarter rest and a final C2 note.

G Major Scale

The G major scale is written on a single staff with a bass clef and a key signature of one sharp (F#). It consists of a sequence of quarter notes ascending from G2 to G4, followed by a quarter rest and a final G2 note.

D Major Scale

The D major scale is written on a single staff with a bass clef and a key signature of two sharps (F# and C#). It consists of a sequence of quarter notes ascending from D2 to D4, followed by a quarter rest and a final D2 note.

A Major Scale

The A major scale is written on a single staff with a bass clef and a key signature of three sharps (F#, C#, and G#). It consists of a sequence of quarter notes ascending from A2 to A4, followed by a quarter rest and a final A2 note.

E Major Scale

The E major scale is written on a single staff with a bass clef and a key signature of four sharps (F#, C#, G#, and D#). It consists of a sequence of quarter notes ascending from E2 to E4, followed by a quarter rest and a final E2 note.

B Major Scale



Cb Major Scale



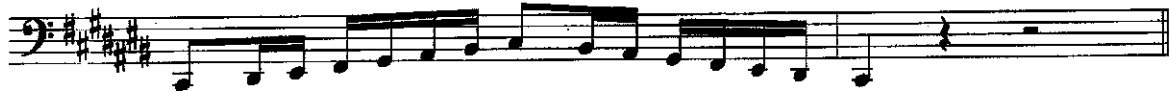
F# Major Scale



Gb Major Scale



C# Major Scale



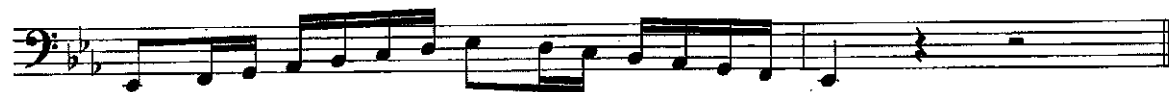
Db Major Scale



Ab Major Scale



Eb Major Scale



Bb Major Scale



F Major Scale



Misouri ASB Melodic Minor Scales

A Melodic Minor



E Melodic Minor



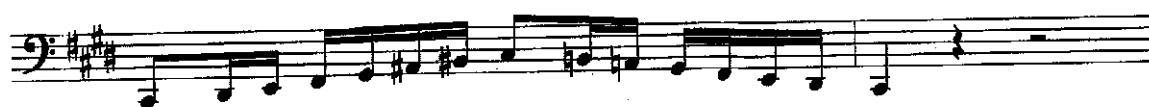
B Melodic Minor



F# Melodic Minor



C# Melodic Minor



G# Melodic Minor



Ab Melodic Minor



D# Melodic Minor



Eb Melodic Minor



A# Melodic Minor



Bb Melodic Minor



F Melodic Minor



C Melodic Minor



G Melodic Minor



D Melodic Minor

