



Consulting

Geospatial Consultancy

OpEzee Africa and its valuable resources have supported many organizations globally in the implementation of geospatial technology and service.

Solutions

OpEzee Africa recognizes that accurate geospatial data underpins many decision-making processes globally across many sectors. OpEzee Africa is highly skilled in providing solutions that stem from the creation of digital twin environments, derived from accurate geospatial data sets and collaborates closely with its clients in providing a solution tailor made for their business.

End-to-end consulting services offered by OpEzee Africa are:

Services are offered with customization in both short-term and long-term engagements. OpEzee Africa also consults clients on a per-day or per-week basis during key phases of ongoing projects.

- Requirement analysis
- Project design & planning
- Project management
- Geospatial orientation seminars & workshops
- Database & application design with system configuration
- Providing expertise
- Identifying problems
- Creating resolve

Various sectors

- Government – Central and Local
- Real Estate
- Education
- Heritage and Tourism
- Smart Cities
- Telecoms
- Road and Infrastructure
- Holographic Experiences

CONSULTING

About Us

OpEzee Africa is a new business platform founded by Ronel Williams. OpEzee Africa specializes and provides world class consultancy services across many industries and primarily so for solutions pertaining to the Geospatial industries in Africa, the Middle east and India. OpEzee Africa also offers vertical, oblique height data, Lidar, 3D modelling and ground-based surveys and processing as part of its portfolio.

Consulting

- Geospatial Consultancy
- Solutions

Solutions

- Architecture
- Real estate
- Education
- Heritage and Tourism
- Smart Cities
- Telecoms
- Road and Infrastructure

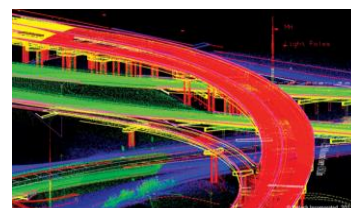
Services



Ground Penetrating Radar



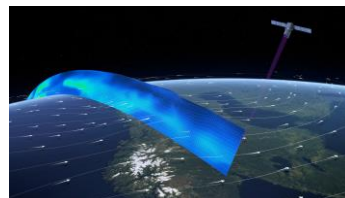
Mobile Mapping Survey



Lidar Survey



Oblique Mapping Survey



Satellite Survey



Holographic Experiences