

MOBILE MAPPING SURVEY

Mobile Mapping Survey

High precision ground-based data is captured using the Leica Pegasus two mobile mapper. The state-of-the-art system provides for the safe, quick, and simultaneous capture of high-resolution imagery and dense point cloud from a moving vehicle. Mobile mapping surveys typically provide for and compliment many Survey and GIS solutions.

Components



Navigation unit

- GNSS (Global Navigation Satellite System)
- IMU (Inertial Measurement Unit)



Digital cameras

- 7 multidirectional cameras
- Provides 360 degree coverage



Z+F Profiler

- Provides shooting at a speed of 1 million dots per second
- scanning beam range of 120 meters

Industrial uses

- Topographical surveys for large road projects
- Town or city street mapping and modelling
- Airport runway and taxiway surveys
- Beach and cliff erosion mapping
- Asset and GIS data collection
- Quarry mapping
- White line surveys
- Railway surveys

MOBILE MAPPING SURVEY

About Us

OpEzee Africa is a new business platform founded by Ronel Williams, which provides world class aerial survey services, mobile mapping and geospatial processing services primarily to clients in Africa, Europe, Australia and Asia. OpEzee Africa specializes in the provision of aerial and mobile mapping survey services across numerous countries in addition to our core base in South Africa. OpEzee Africa offers vertical and oblique aerial imagery, height data from both LiDAR and imagery, 3D modelling, ground based survey, data hosting, streaming solutions and web-based GIS solutions.

Consulting

- Geospatial Consultancy
- Solutions

Solutions

- Architecture
- Real estate
- Education
- Heritage and Tourism
- Smart Cities
- Telecoms
- Road and Infrastructure

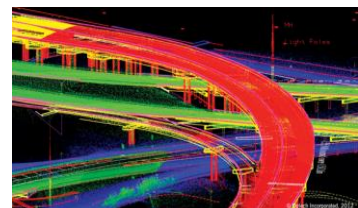
Services



Ground Penetrating Radar



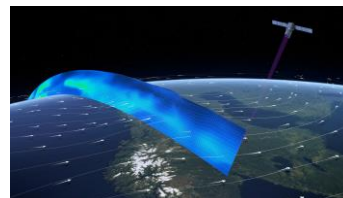
Mobile Mapping Survey



Lidar Survey



Oblique Mapping Survey



Satellite Survey



Holographic Experiences