

# OBLIQUE MAPPING SURVEY

## Oblique Mapping Survey

Oblique aerial imagery using state of the art oblique camera technology. We deliver oblique imagery within an extremely powerful software tool for the viewing, analysis and measurement of the built and natural environment. Oblique and vertical imagery captured at the same time. Orthogonal imagery provides top down view for additional analysis. View any feature from 5 angles simultaneously; the multi-perspective interface allows you to click on any part of the data set to synchronize all windows to the same area. Data delivered in software with a set of built-in tools that enable accurate 3D measurements to be taken.

## Equipment



Midas V System

- The new Midas V system incorporates 5 x Nikon D850e (45.7 MP) state of the art DSLR cameras.
- The nadir camera is fitted with a high quality Nikon Micro AF-S NIKKOR 200 mm f4/D IF-ED lens.
- The 4 oblique cameras are in turn fitted with high quality Nikon AF-S NIKKOR 300 mm f4/D IF-ED.
- The system is capable of operating at 14000 Ft to acquire high quality imagery at a resolution 10 cm GSD.
- The system has a fast recycling rate of approx. 1.3sec which allows us to attain a higher FOL at lower altitudes.

## Industrial uses

- Property valuations
- 3D visualization and simulation
- 3D modelling
- Cityscapes
- City and town planning
- Infrastructure mapping
- Insurance risk assessment
- Flood mapping

# OBLIQUE MAPPING SURVEY

## About Us

OpEzee Africa is a new business platform founded by Ronel Williams, which provides world class aerial survey services, mobile mapping and geospatial processing services primarily to clients in Africa, Europe, Australia and Asia. OpEzee Africa specializes in the provision of aerial and mobile mapping survey services across numerous countries in addition to our core base in South Africa. OpEzee Africa offers vertical and oblique aerial imagery, height data from both LiDAR and imagery, 3D modelling, ground based survey, data hosting, streaming solutions and web-based GIS solutions.

## Consulting

- Geospatial Consultancy
- Solutions

## Solutions

- Architecture
- Real estate
- Education
- Heritage and Tourism
- Smart Cities
- Telecoms
- Road and Infrastructure

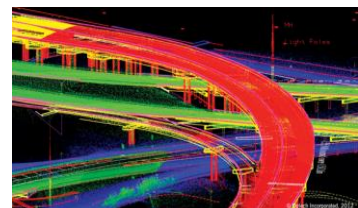
## Services



Ground Penetrating Radar



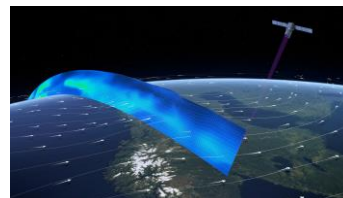
Mobile Mapping Survey



Lidar Survey



Oblique Mapping Survey



Satellite Survey



Holographic Experiences