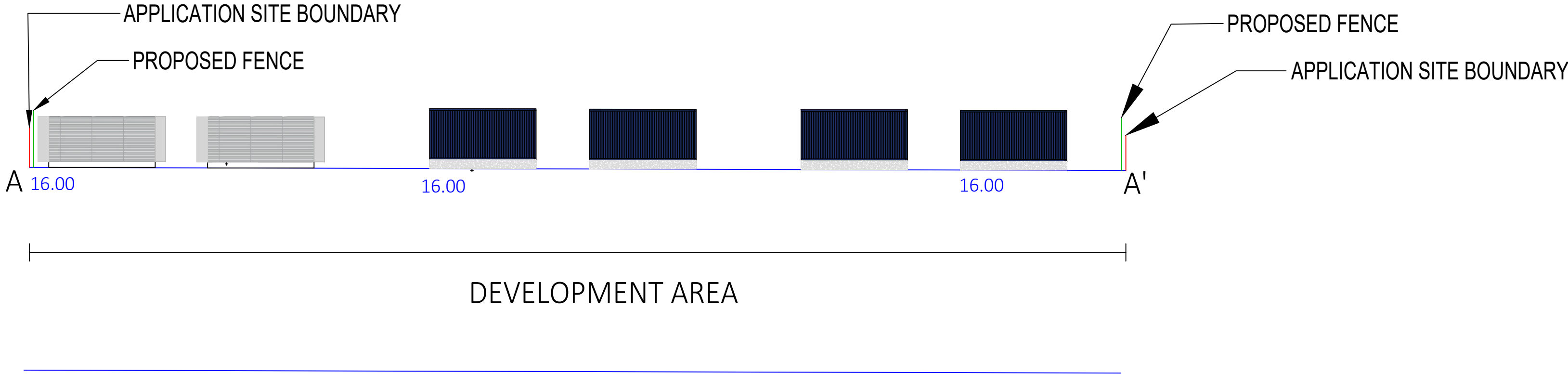
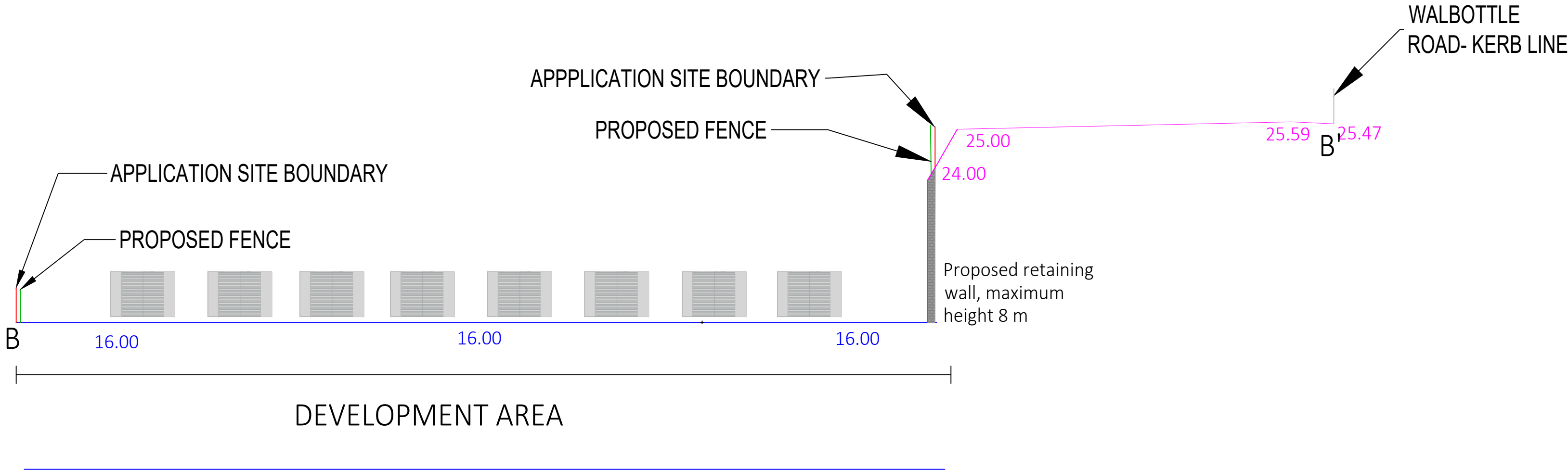


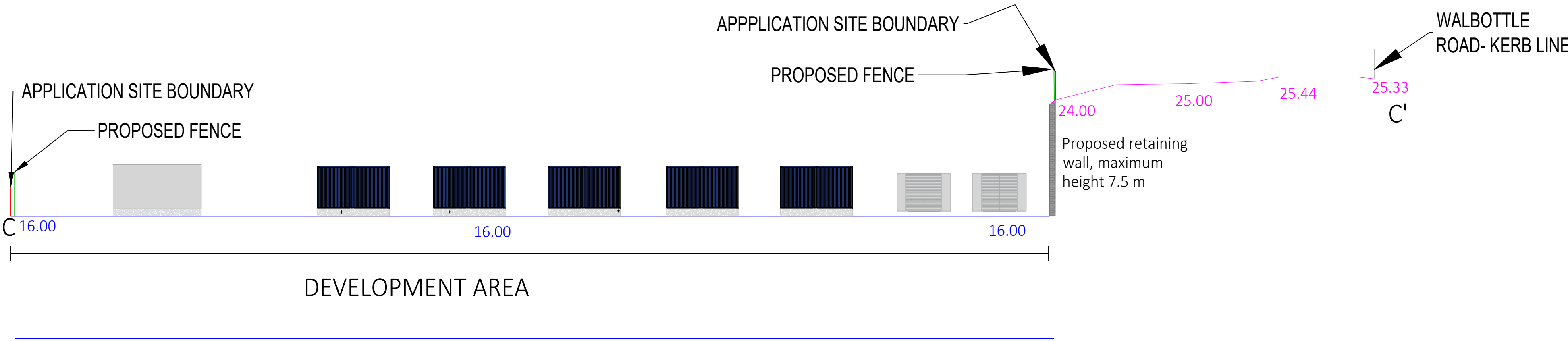
SECTION A-A'



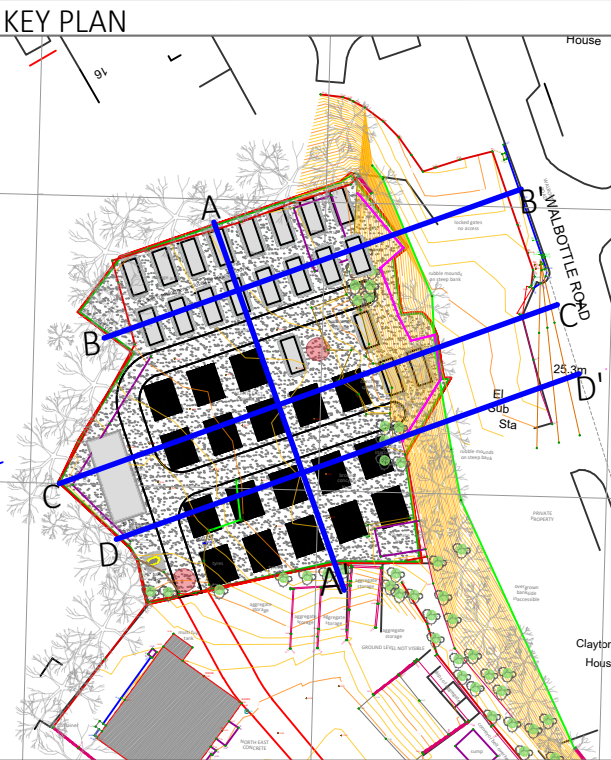
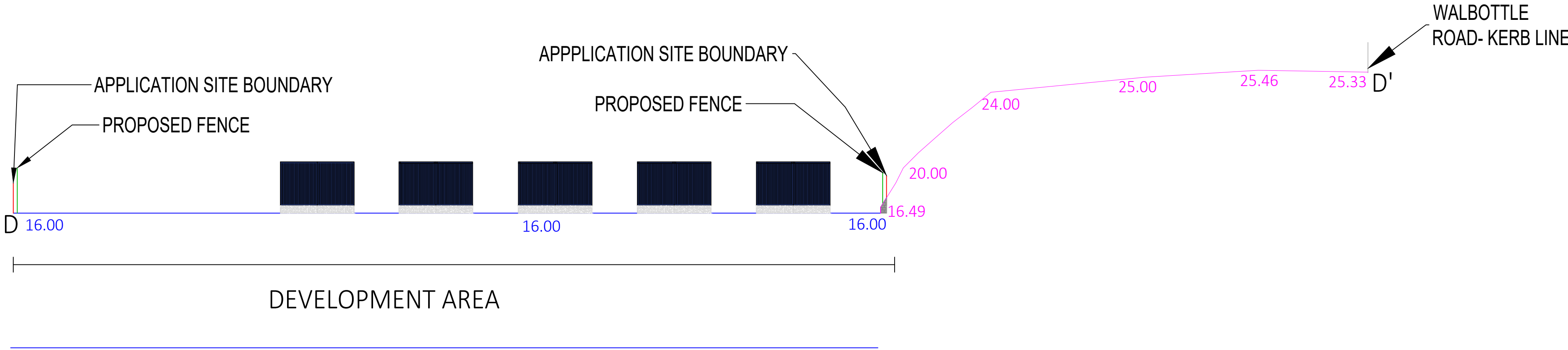
SECTION B-B'



SECTION C-C'



SECTION D-D'



NOTES
Any equipment shown is indicative of dimensions and general appearance and may be subject to minor amendments by the manufacturer or supplier

LEGEND

- BATTERY
- PCS
- TRANSFORMER
- STEEL STRUCTURE
- 33 kV SWITCHGEAR
- FENCE
- ACOUSTIC LOUVRE
- PROPOSED GROUND LEVELS
- PROPOSED RETAINING WALL
- EXISTING GROUND LEVELS

REVISIONS

INITIAL VERSION							
PO2	SS	22/01/25	xx	xx	xx	xx	xx

INITIAL VERSION							
PO1	CL	14/02/24	xx	xx	xx	xx	xx

REVISION NOTES/COMMENTS							
REV	DRAWN BY	DATE	CHECKED BY	DATE	APPROVED BY	DATE	

fig power
firm, flexible energy

CLIENT
FIG POWER

PROJECT
NEWBURN
BATTERY ENERGY STORAGE PROJECT

TITLE
PROPOSED SITE SECTIONS- BESS

FIG PROJECT NO.
29911

SCALE @ A1
1:150

PAGE NO.
X:XXX

STATUS DESCRIPTION
FOR INFORMATION

STATUS
S2

DRAWING NO. (PROJECT CODE-ORIGINATOR-ZONE-LEVEL-TYPE-ROLE-NUMBER)
29911-FIG-DR-0012.4

REVISION
PO2