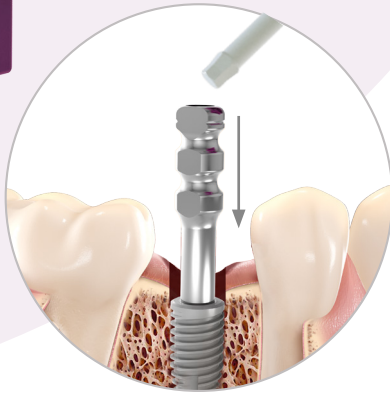


Closed-tray technique

for 2mm subcrestal implants



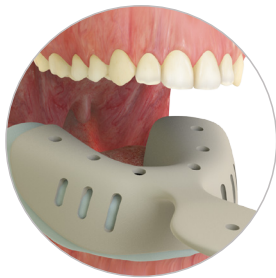
1. There are two lengths of impression posts (regular/long) and two types (Exact/Non Exact) to be used according to the patient situation. Place the impression post into the implant and hand tighten the screw with a 1.2 hex driver.



2. Place the polymer impression cap on the top of the fixed closed impression coping. The arrows of the cap must be aligned in the buccal lingual direction.



3. Apply impression material around the impression coping. This ensures that a complete impression is taken.



4. Fill the tray with impression material and place it into the patient's mouth. Wait for the curing of the material and carefully remove the tray.



5. The impression cap remains in the impression material cured, it's pulled out from the impression post with the removal of the tray.



6. Unscrew and remove the impression post from the patient's mouth.



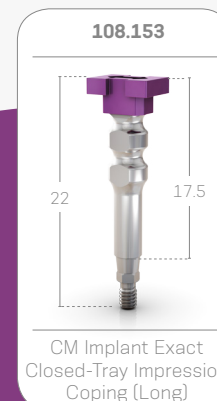
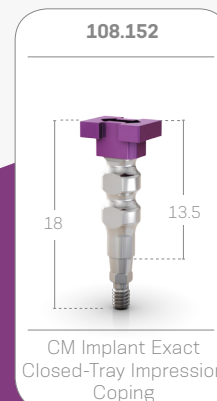
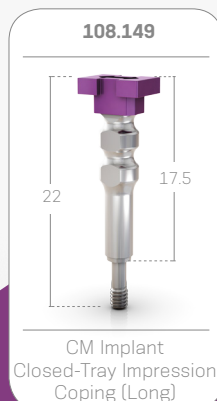
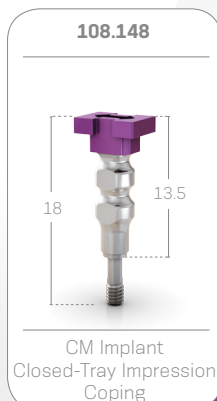
7. Mount the implant analogue to the impression post (without the cap as it's retained in the tray) using the impression post screw.



8. Reposition the impression post into the tray. Carefully push the post toward the cap which is inside the impression material, you will feel a tactile engagement of the components.

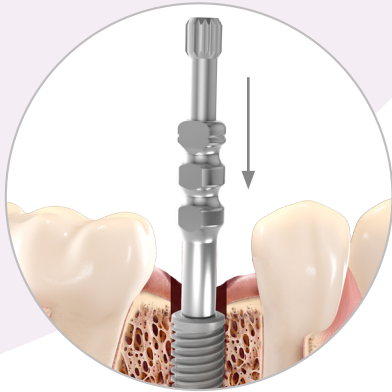


9. The impression is now ready to be used to create a model.

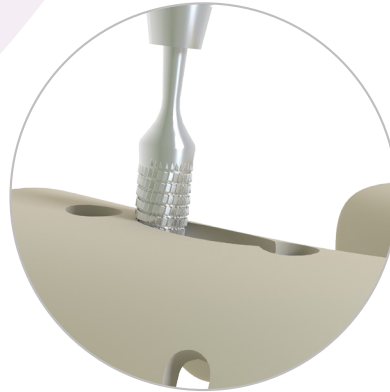


Open-tray technique

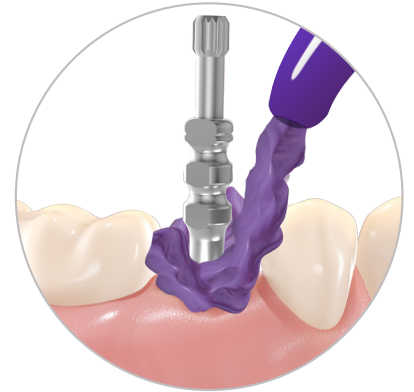
for 2mm subcrestal implants



1. There are two lengths of impression posts (regular/long) and two types (Exact/ Non Exact) to be used according to the patient situation. Place the impression post into the implant and hand tighten the screw, it is possible to use a 1.2 hex driver.



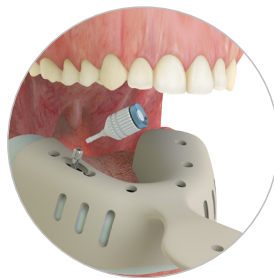
2. Prepare the tray by creating a window in the tray to be able to gain access to the impression coping after the impression material is set.



3. Apply impression material around the impression coping. This ensures that a complete impression is taken



4. Fill the tray with the impression material and place it into the patient's mouth. Ensure that the screw head is out of the impression material/tray and wait for the curing of the material.



5. Loosen the screw of the impression post in the anti clockwise direction using a 1.2 hex driver. Carefully remove the tray.

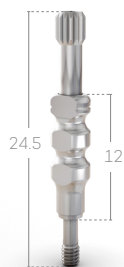


6. Place the implant analog into its position and tighten the screw positioned in the opposite site of the analog. Ensure that everything is stable, and stabilize the analog through its retentive section to prevent the impression coping from rotating.



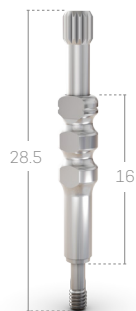
6. The impression is now ready to be used to create a model.

108.150



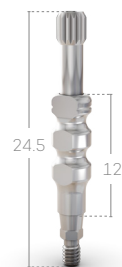
CM Implant
Open-Tray Impression
Coping

108.151



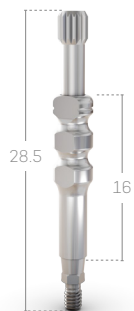
CM Implant
Open-Tray Impression
Coping (Long)

108.154



CM Implant Exact
Open-Tray Impression
Coping

108.155



CM Implant Exact
Open-Tray Impression
Coping (Long)