

STRIVING FOR **EXCELLENCE.**

MEDENTIKA

High-precision implants  
and implant components  
made in Germany



 **MEDENTIKA®**



**Medentika was formed in Germany in 2005 by three men.**

**Juergen Kaelber:** Master Engineer

**Bernd Gaddum:** Master Dental Technician

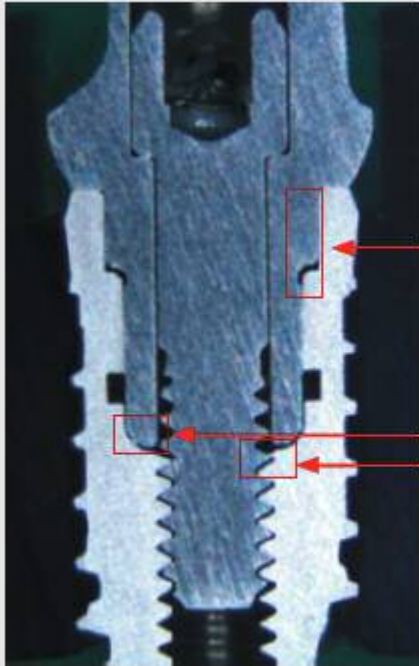
**Frank Fix :** Master Machinist





Milling Facility

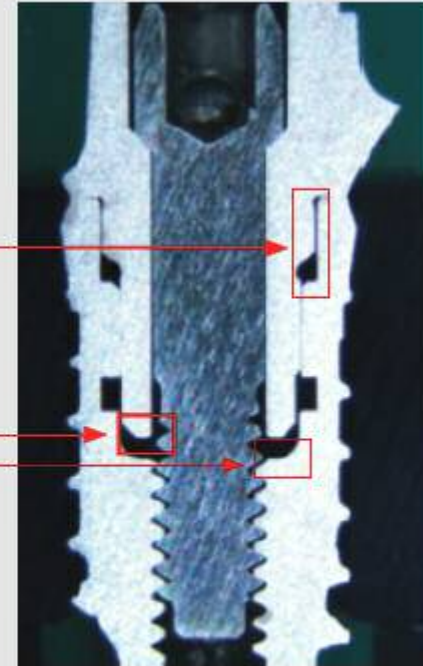
# Medentika has designed their abutments and screws for an “optimized fit”.



Section cut of  
**Medentika T-Series** abutment

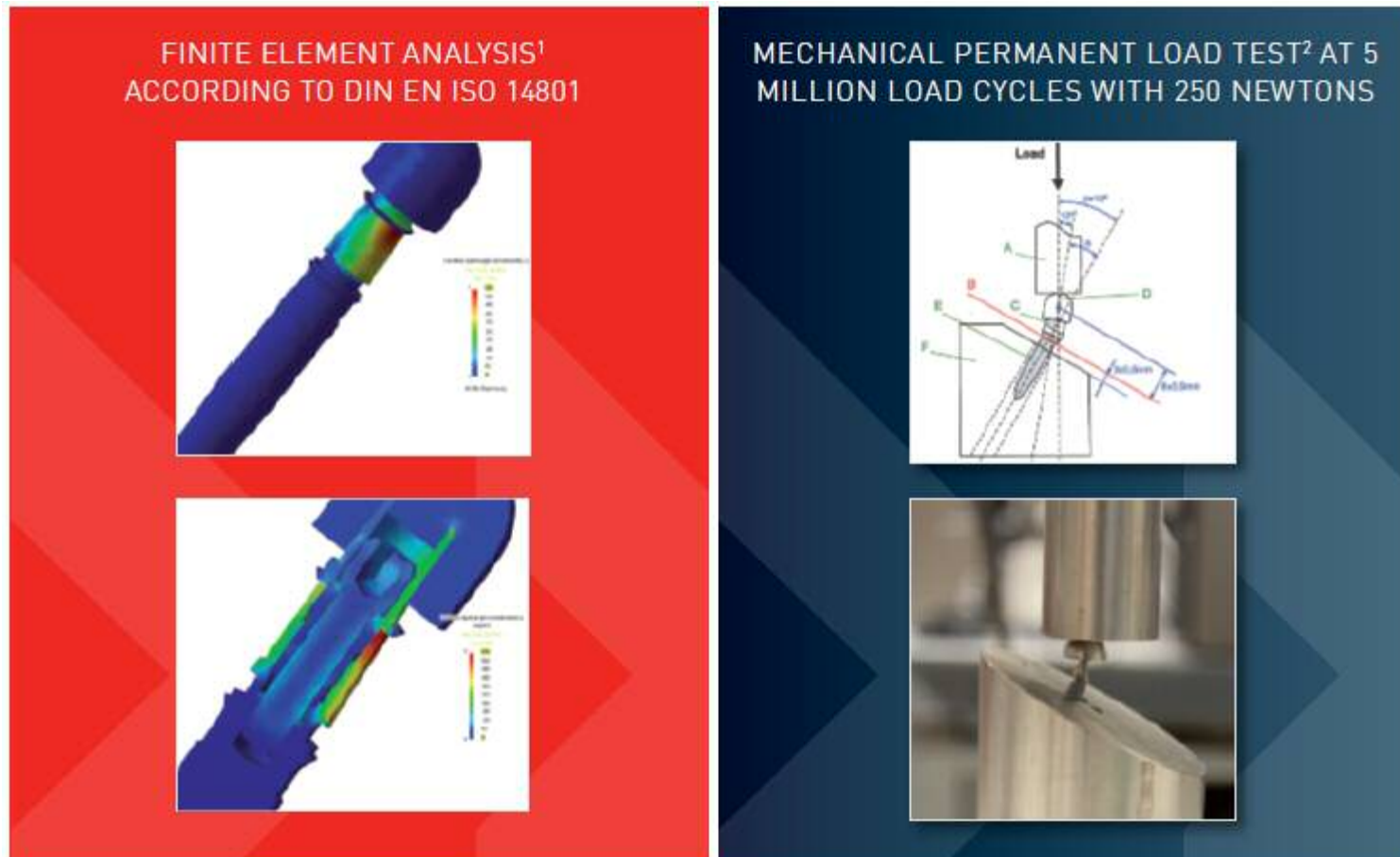
less micro gap means  
less micro movement

less micro gap  
and deeper engagement/  
insertion into implant  
to enhance implant/  
abutment stability and  
reduce micro movement



Section cut of  
**Dentsply Implants®Xive® S** abutment

**Medentika has done fatigue and stress testing on their abutments and screws.**



<sup>1</sup> by: UNIKE Design & Development GmbH in Trier

<sup>2</sup> by: Professor for Mechanical Engineering, Professor, Department of Endodontics, Prosthodontics and operative Dentistry, Dental School, Dr. Dwayne D. Arola, University of Maryland of Baltimore County, 1000 Hilltop Circle, Baltimore (USA)

Medentika offers a “30 Year Warranty”  
on the abutment, screw, and will  
honor the original implant warranty!

- Optimized Fit
- Reduced Micromovement
- Reduced Microgaps
- Fatigue and Stress Test
- Grade 5 Ti



# Medentika has innovative products that are compatible with most implant systems!

## PRODUCT INDEX

IMPLANT PICK-UP OPEN IMPRESSION		MEDENTIBASE® ABUTMENTS	
PLANNING ABUTMENTS		MEDENTIBASE® PLASTIC CAP	
LABORATORY ANALOGS		MEDENTIBASE® IMPLANT PICKUP	
ABUTMENT SCREWS		PREFACE TITANIUM ABUTMENT	
LABORATORY SCREWS		TITANIUM BASE ABUTMENT	
TEMPORARY ABUTMENTS ENGAGING		SCANBODY GEN 2	
TEMPORARY ABUTMENTS NON-ENGAGING		ALTUS™ GINGIVA HEIGHT MEASURING TOOL	
STANDARD ABUTMENTS STRAIGHT		NOVALOC® PROCESSING PACK TITANIUM OR PEEK [2 PACK]	
STANDARD ABUTMENTS ANGLED		MEDENTILOC® ABUTMENTS STRAIGHT	
MASSIVE (SOLID) ABUTMENTS STRAIGHT		MEDENTILOC® ABUTMENTS 15° ANGLED	
MASSIVE (SOLID) ABUTMENTS ANGLED		NOVALOC® TOOLS	
CASTABLE GOLD ABUTMENTS ENGAGING		TORQUE RATCHET	
CASTABLE GOLD ABUTMENTS NON-ENGAGING		INSERTS FOR LABORATORY SCREW DRIVER AND RATCHET	

**BioHorizons®**

Tapered Internal  
Tapered Internal Plus  
Tapered Tissue Level

**BIOMET 3i®**

Certain®  
External Hex

**Dentsply® Implants**

ASTRA TECH OsseoSpeed® TX  
XiVE® S  
ANKYLOS®

**MIS®**

SEVEN® Internal Hex

**Nobel Biocare®**

NobelReplace® Tapered  
NobelActive®  
NobelReplace® Conical  
Brånemark®

**Straumann®**

Tissue Level®

**Zimmer Dental®**

Tapered Screw-Vent®



# Medentika is known for their Digital Solutions!

- Solid Titanium with screw
- Pre-coated for scanning
- Suitable for model and intra-oral scanning
- Compatible with 3Shape, Dentalwings, ExoCad.



**Scan Body**



**Ti Base**

- Solid Titanium with screw
- Anti-rotational notch
- Consistent chimney design
- Available in 4.0mm and 5.5mm chimney heights



# Medentika has a Full Arch Solution!

- Solid Titanium Abutment
- 5 Different Gingival Heights
- Low Cone Height for better “Path of Draw”
- Compatible with many implant systems



**MedentiBASE**



**UCLA Abutment**

- All Plastic UCLA
- Gold UCLA
- Available Scan Body
- Ti Base/ Adhesive Cap available in 2 heights
- .050” Ball Driver allows for up to 15 Deg. Access hole

# Medentika offers...

- German manufactured components
- Innovative products
- An Optimized precision fit
- High Quality materials
- A 30 Year Warranty
- US Support and Warehousing
- A great partnership!

