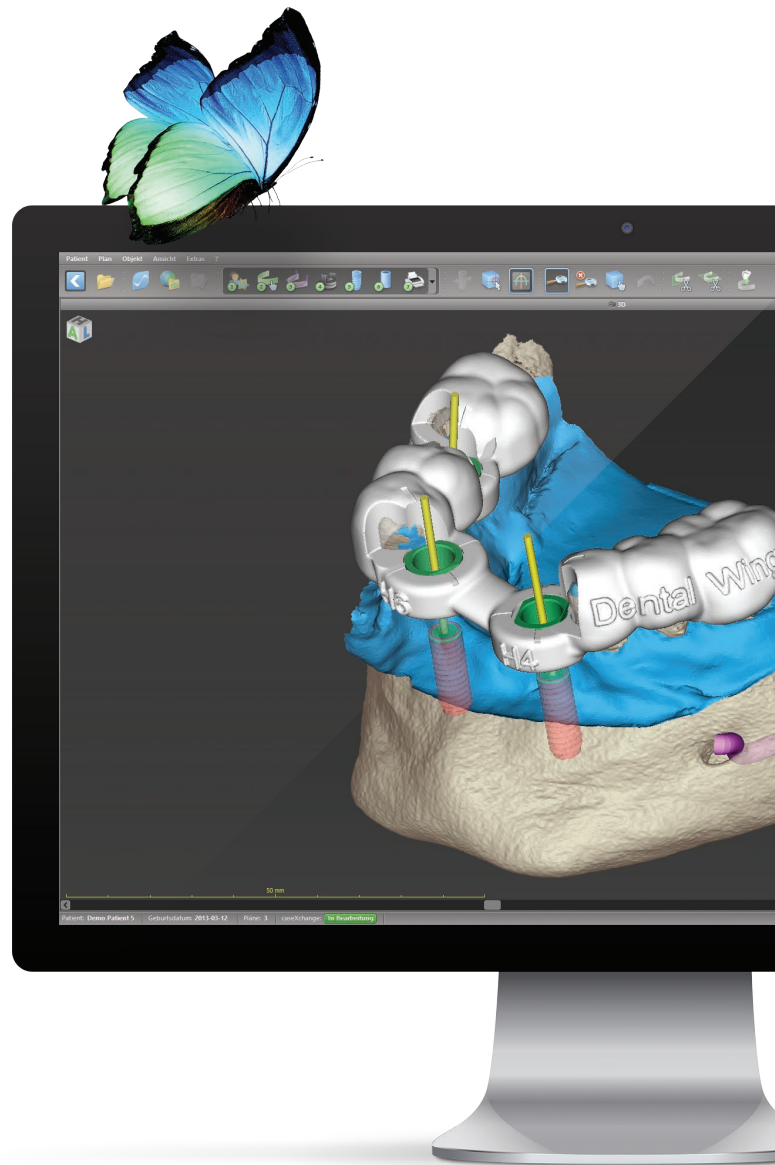




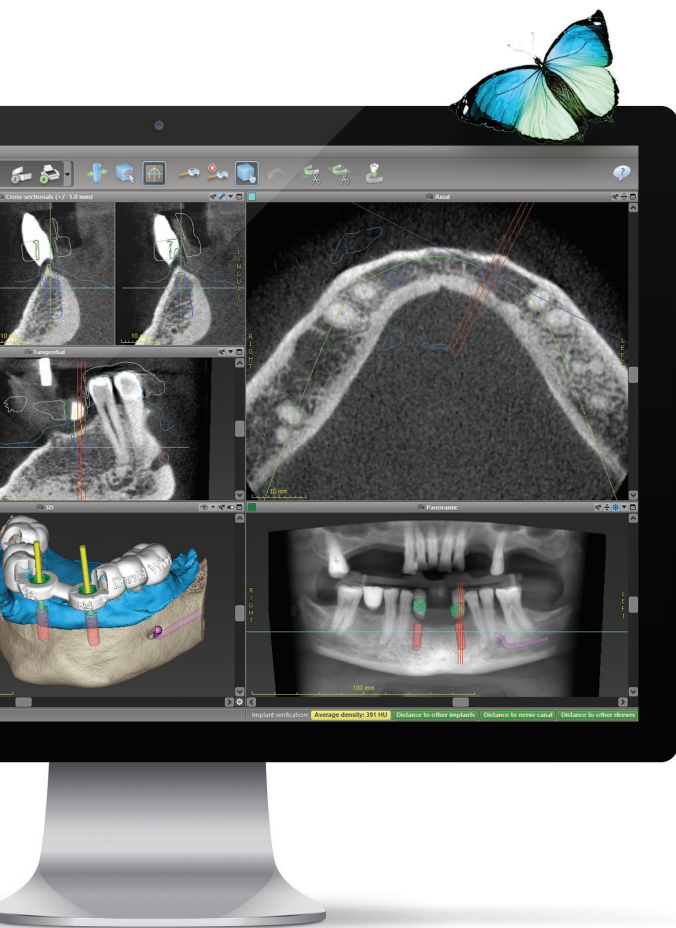
coDiagnostiX™
GUIDED
SURGERY
SOFTWARE



PREDICTABLE, RELIABLE,
AND REPEATABLE RESULTS

15+ years
of clinical
success

150,000+
cases
guided



Digitize your workflow and take advantage of exciting opportunities

coDiagnostiX is the dental implant planning software for clinicians and dental laboratories.

Work with any implant or guided surgery kit.

Open interfaces ensure compatibility with all (CB)CT, IO, model & impression scanners and open CAD/CAM solutions.

Data export in open STL format allows for local drill guide production with cost-efficient and high-volume production technologies, such as 3D printing.

The completely digital workflow requires no scan template. Decision on guided surgery treatment can be taken after the (CB)CT scan.

A sophisticated communication technology offers seamless integration of surgical and prosthetic workflows.



PROSTHETIC-DRIVEN BACKWARD PLANNING

DWOS Synergy, our integrated planning environment, allows for real-time collaboration of coDiagnostiX and Dental Wings DWOS stations.

For third-party CAD systems, an open interface is provided to easily exchange surgical and prosthetic data between their systems and coDiagnostiX.



coDiagnostiX

KEY BENEFITS

KEY BENEFITS

CLINICIAN

- Offer gold standard treatment with minimal patient visits (no mandatory scan template required).
- Integrate surgical and prosthetic workflows.
- Work with highly accurate drill guides with tooth, gingiva or bone support or a combination thereof.
- Benefit from short distances thanks to local drill guide production.

LABORATORY

- Gain access to the growing number of digital implant cases.
- Benefit from an open and customizable system.
- Improve fit of your implant-borne restorations.
- Produce highly accurate drill guides in-house.
- Produce temporary restorations and gingiva formers through design with a CAD software.

KEY FEATURES

Comprehensive library with implant systems from all major manufacturers and many sleeve and guided systems. Own elements/systems can be added.

Matching of DICOM data and multiple optical scans

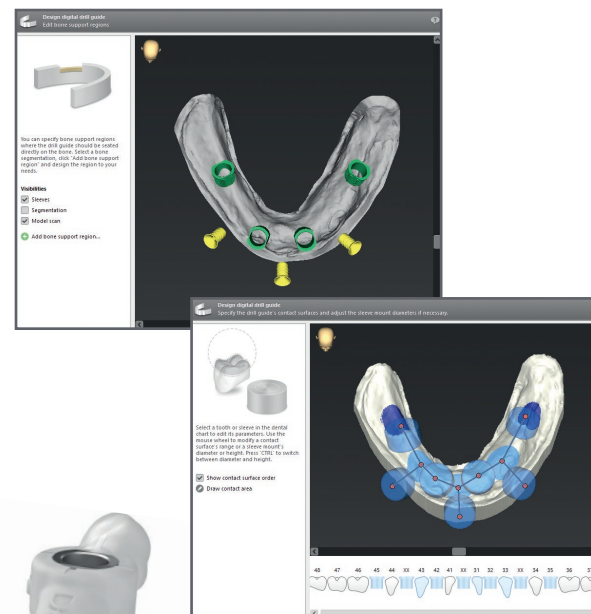
Dual-scan workflow supported

Advanced drill guide design to realize tooth, gingiva or bone supported drill guides as well as mixed support or lateral fixation. Freehand tool available to freely draw support surfaces.

Virtual planning export function with integrated model builder

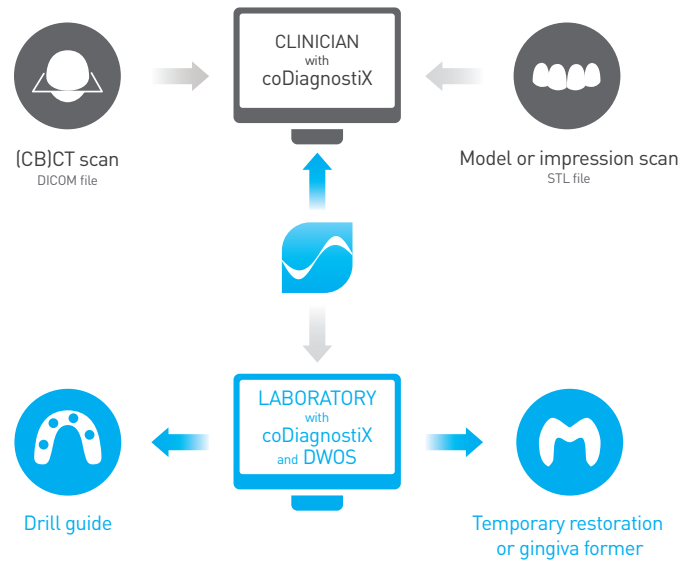
caseXchange communication platform for collaboration between clinician & lab and the provision of your digital services

coDiagnostiX iPad® app for patient case presentation



TYPICAL WORKFLOW

- 1 Import DICOM data.
- 2 Determine optimal implant position based on desired prosthetic outcome.
- 3 Import model/impression scan.
- 4 Design drill guide.
- 5 Design temporary restoration or gingiva former (through CAD software).
- 6 Produce drill guide and prosthetic elements.



Follow this link to our workflow video.



 dentalwings.com



DentalWings



dentalwingsinc



coDiagnostiX

Dental Wings Inc.
2251 Letourneux
Montreal QC H1V 2N9
Canada

T +1 514 807 8485 (international)

T +1 888 856 6997 (toll free in U.S. and Canada)

W dentalwings.com

Dental Wings GmbH
Duesseldorfer Platz 1
09111 Chemnitz
Germany

T +49 371 273903-70

E coDiagnostiX@dental-wings.com

W codiagnostix.com

Dental Wings, DWOS and coDiagnostiX are trademarks or registered trademarks of Dental Wings.

© 2016 Dental Wings Inc. P/N 29-0301-EN V. 1.2

**CONTACT A DENTAL WINGS
REPRESENTATIVE FOR A TRAINING
AND EVALUATION OPPORTUNITY.**