

*SMALL DIAMETER,
GREAT ACHIEVEMENTS.*

NEODENT[®] HELIX[™] GM[™] NARROW



**Narrow GM[™]
Connection**



**ACQUA
Surface**

Neodent® Helix™ GM™ Narrow

Small diameter, great achievements.

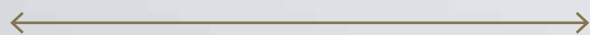
Bring reliability to your practice through the next generation of immediate esthetic solutions for reduced interdental spaces and bone availability.

Patient expectations for immediate and esthetic treatment for missing teeth are constantly growing, even in cases with challenging indications such as reduced interdental spaces and reduced bone availability.

Implant therapy in such situations can be perceived as challenging for even highly experienced clinicians, due to implant strength concerns and lack of adequate prosthetic options.⁽¹⁾

Finally, surgical procedure approach, both guided or non-guided handling can get arduous due to complex treatment procedures.

The Ø2.9mm **Helix GM Narrow** provides an immediate, small diameter solution to provide more simplicity for treatment protocol – regardless of whether guided or non-guided techniques are used – confidence without compromising on strength, and flexibility for immediate esthetic outcomes in limited interdental spaces.



Ø2.9





“

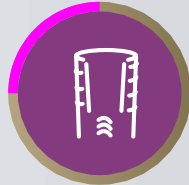
“With the new **Helix GM Narrow** system, I’m confident that I’m using a reliable long-term solution that allows for treatment of patients with reduced interdental space, with expected esthetic results.

The narrow implant design features adequate primary stability that enables the use of immediate loading.

The versatility of the hybrid surgical kit, as well as the comprehensive prosthetic portfolio, allows me to customize surgical plans seeking to provide a predictable and successful results for my patients.”

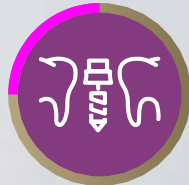


DR. GENINHO THOMÉ ”



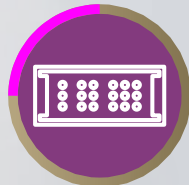
CONFIDENCE FOR STRONG AND STABLE IMPLANT PLACEMENT

A connection based on proven concepts.



FLEXIBILITY FOR IMMEDIATE ESTHETIC OUTCOMES

Versatile portfolio designed for limited spaces.



SIMPLICITY FOR TREATMENT PROTOCOLS

Intuitive and functional surgical cassette to best suit any chosen surgical procedure.





Confidence for strong and stable implant placement

Implant therapy for demanding indications, such as reduced interdental spaces, can raise concerns regarding resistance and biomechanical behavior. Therefore, features of an implant-abutment interface are essential to provide successful long-term functional, stable, and esthetic results.

The Ø2.9mm Helix features the strong and stable GM Narrow connection, designed with a combination based on proven concepts seeking to achieve long lasting results. A system produced with commercially pure titanium grade 4, offering treatment predictability through the Acqua hydrophilic surface.

RELIABLE AND STRONG GM NARROW CONNECTION

1 16° Morse Taper connection

The implant-abutment interface is a relevant aspect that could interfere on the success of patient's outcome. **Helix GM Narrow** is designed to deliver a tight fit for optimal connection sealing and offers strong mechanical resistance.



2 Internal hexagonal indexation

The connection is designed with internal hexagonal indexation for precise abutment positioning, easy handling.



3 Platform switching

The abutment design features a narrower diameter than the implant coronal area, which enables platform switching. ⁽²⁻⁶⁾



4 Screw-retained interface

The **Helix GM Narrow** features a morse taper screw-retained connection, which fits into the internal thread with precision seeking to provide a stable abutment connection.



COMMERCIALLY PURE TITANIUM GRADE 4

Beyond a versatile design allowing primary stability, the **Helix GM Narrow** is produced from the commercially pure and mechanically strong titanium grade 4 (Ti Gr 4).

Static torsion tests have been conducted providing a greater performance and strength of +12.7% than the former small diameter Neodent® system (Ti6Al4V-ELI).

Static torsion test

+ 12.7%

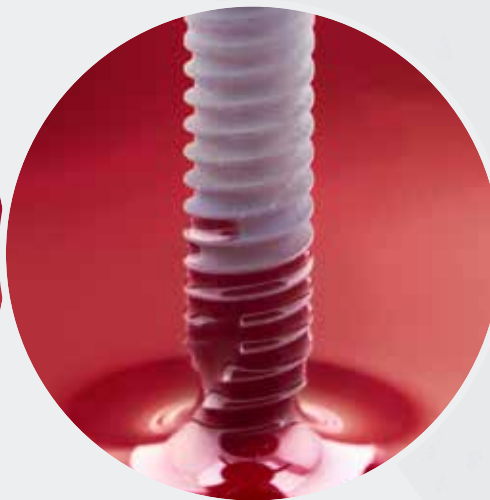
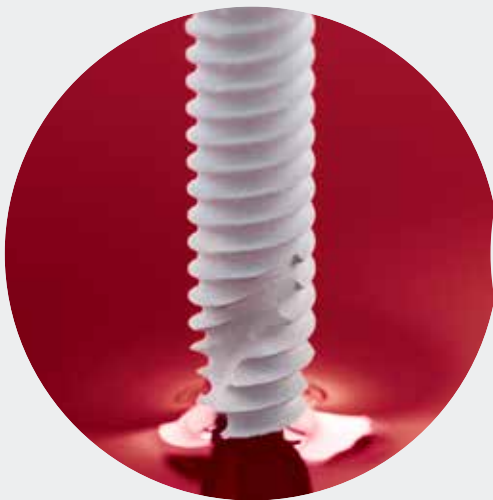
New small diameter Neodent® system (Ti Gr 4)

Former small diameter Neodent® system (Ti6Al4V-ELI)

Font: Annex_NoC Helix Narrow internal document.

ACQUA HYDROPHILIC SURFACE'S AND TREATMENT PREDICTABILITY

The Neodent® Acqua hydrophilic surface is the next level of the highly successful S.L.A. surface. It was developed to reach expected results outcomes even in challenging patient cases, such as soft bone or immediate protocols. ⁽⁷⁻¹⁰⁾



The Neodent® hydrophilic surface presents a smaller contact angle when in contact with liquids. This provides greater accessibility of organic fluids to the Acqua implant surface to help spur healing. ⁽⁸⁾



Flexibility for immediate esthetic outcomes

Patients lacking bone availability in the esthetic zone or experiencing limited space between adjacent teeth, can make tooth replacement procedures challenging for implant clinicians. When coupled with a lack of adequate prosthetic options to correctly replace missing teeth, patient satisfaction declines, and practices can suffer.

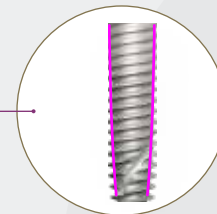
The versatile **Neodent® Helix™ GM™ Narrow** system combines a $\text{\O}2.9\text{mm}$ Helix implant, with a comprehensive prosthetic portfolio to restore cases in limited bone availability and interdental spaces, for immediate esthetic results*.

* Implant may be loaded immediately when good primary stability is achieved with the appropriate occlusal loading

THE UNBEATABLE VERSATILITY OF HELIX

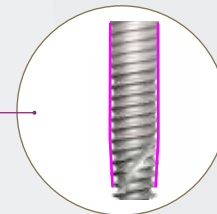
Dynamic progressive thread design

- Coronal: Double start threads with rounded root > compressing;
 - Apex: V-Shape > Self-cutting
- High primary stability.



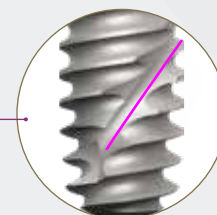
Tapered body design

- Coronal: Progressive tapered design;
 - Apex: 12°
- Under-osteotomy for bone types 3 and 4.



Hybrid contour

- Coronal: Cylindrical;
- Apex: Conical.



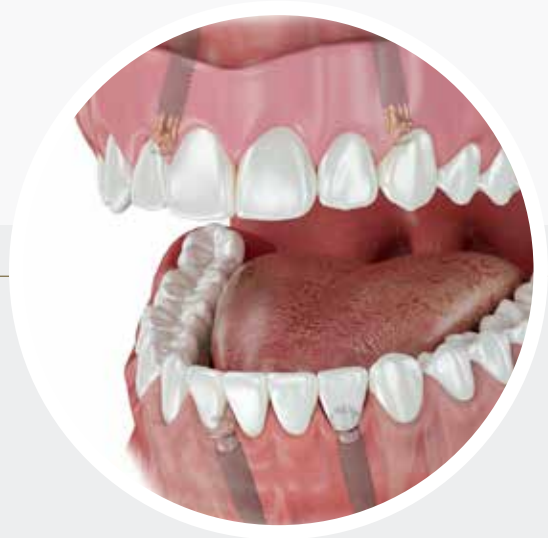
Active Apex

- Short tip;
- Helicoidal flutes.



A SOLUTION FOR LIMITED BONE AVAILABILITY IN ALL BONE TYPES

Indicated for all bone types, the **Neodent® Helix GM Narrow** is specifically engineered to address esthetic challenges in situations with limited bone, thanks to its small diameter implant of 2.9mm.



COMPREHENSIVE PROSTHETIC PORTFOLIO FOR OPTIMIZED ESTHETIC AND FUNCTIONAL RESULTS

The **Helix GM Narrow** system was designed to offer clinicians greater levels of treatment flexibility with a comprehensive prosthetic portfolio, designed to meet patient expectations regarding short treatment times, esthetic and functional results.

It allows single and multi-unit restorations from screw and cement-retained, to removable prosthesis. The system also allows support for conventional and digital workflows supporting provide natural-looking restorations using either conventional or immediate protocols.



Titanium Temporary Abutment



Titanium Base



Universal Abutment



Micro Abutment



Attachment Removable



Single-unit screw-retained prosthesis



Single-unit cement-retained prosthesis



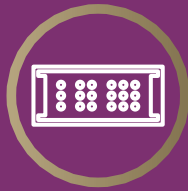
Multiple-unit screw-retained prosthesis



Temporary



Overdenture



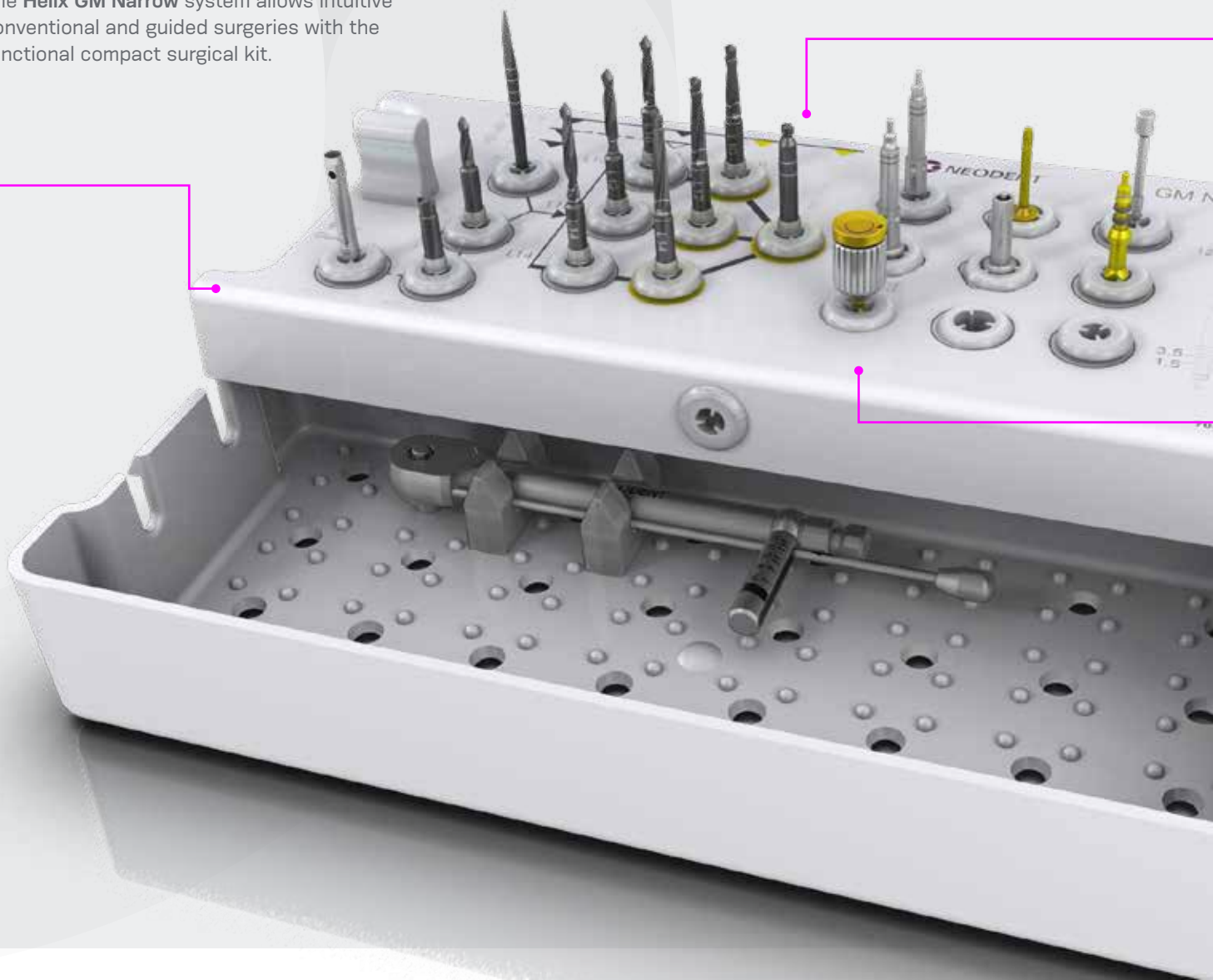
Simplicity for treatment protocols

When it comes to implant procedures, both guided and non-guided surgeries can become unnecessarily complex due to the number of instruments that are usually needed. Additionally, the lack of clear instrument identification can increase the risk of errors and reduce patient satisfaction.

The **Helix™ GM™ Narrow** system provides an intuitive hybrid surgical kit designed to best suit any chosen surgical procedure, whether conventional or guided, adding even more simplicity to the system by using the Neo Screw connection.

AN INTUITIVE AND FUNCTIONAL COMPACT SURGICAL CASSETTE

The **Helix GM Narrow** system allows intuitive conventional and guided surgeries with the functional compact surgical kit.





A PREDICTABLE GUIDED PROCEDURE WITH THE EASYGUIDE CONCEPT

The Neodent® EasyGuide concept offers straightforward guided surgery technique enabling surgical convenience with one-hand procedures, and pursuing predictable surgical results with confidence for accurate implant positioning.



ONE SCREWDRIVER AVAILABLE BOTH FOR NEODENT® GM AND GM NARROW

The **Helix GM Narrow** system features the Neo Screwdriver, which has a star attachment offering reliability and durability, compatible with all GM Narrow healing abutments and restorative screws.



Clinical Case

DR. GENINHO THOMÉ

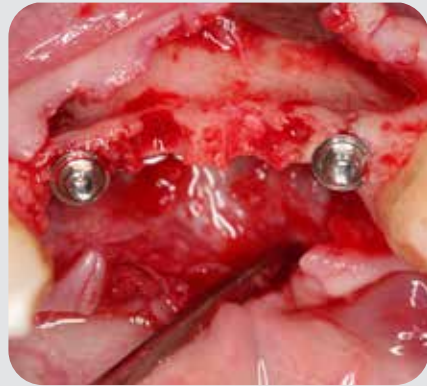
BRAZIL

Masters and PhD in Implantology
Scientific Chairman Neodent®
Chairman of the Board of
Directors of Neodent®

1 Initial clinical aspect



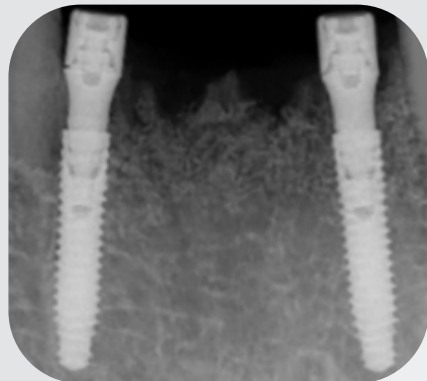
2 Surgical aspect after implant and abutment placement



3 Clinical aspect of surgical follow-up after 1 month



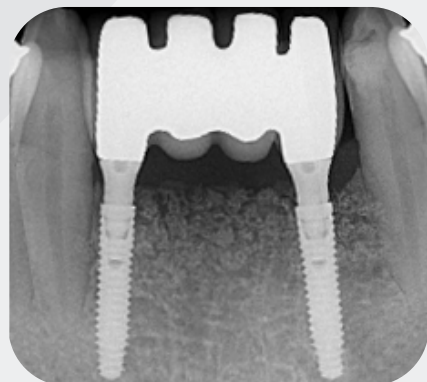
4 Radiographic aspect of final surgical follow-up after 1 month



5 Final prosthetic rehabilitation after 16 months of implant placement



6 Radiographic aspect of final prosthetic rehabilitation after 16 months of implant placement



Neodent[®]: A brand and product you can rely on

Neodent[®] is a leading global brand, part of the Straumann Group, founded by a dentist for dentists with the purpose of changing lives of more patients. Neodent[®]'s solutions provide access to progressive treatment concepts, such as immediacy, enabling implant therapy access and affordability for creating new smiles every day.



GLOBAL BRAND

Available in more than 80 countries with more than 3 million implants sold annually.



PROGRESSIVE TREATMENT CONCEPTS

Modern and reliable solutions.



FOUNDED BY A DENTIST TO DENTISTS

A legacy of more than 25 years focused on ease of use.



THERAPY ACCESS AND AFFORDABILITY

Accessibility to proven and affordable solutions.



- (1) SciELO - Brazil - Internal and Marginal Fit and Fracture Strength of Narrow Diameter Dental Implant-Abutment Assembly Internal and Marginal Fit and Fracture Strength of Narrow Diameter Dental Implant-Abutment Assembly
- (2) Al-Nsour MM, Chan HL, Wang HL. Effect of the platform-switching technique on preservation of peri-implant marginal bone: a systematic review. *Int J Oral Maxillofac Implants.* 2012 Jan-Feb;27(1):138-45.
- (3) Annibaldi S, Bignozzi I, Cristalli MP, et al. Peri-implant marginal bone level: a systematic review and meta-analysis of studies comparing platform switching versus conventionally restored implants. *J Clin Periodontol.* 2012 Nov;39(11):1097-113.
- (4) Hsu YT, Lin GH, Wang HL. Effects of Platform-Switching on Peri-implant Soft and Hard Tissue Outcomes: A Systematic Review and Meta-analysis. *Int J Oral Maxillofac Implants.* 2017;32(1):e9-e24.
- (5) Lazzara RJ, Porter SS. Platform switching: a new concept in implant dentistry for controlling postrestorative crestal bone levels. *Int J Periodontics Restorative Dentistry.* 2006 Feb;26(1):9-17.
- (6) Rocha S, Wagner W, Wiltfang J, Nicolau P, Moergel M, Messias A, Behrens E, Guerra F. Effect of platform switching on crestal bone levels around implants in the posterior mandible: 3 years results from a multicentre randomized clinical trial. *J Clin Periodontol.* 2016 Apr;43(4):374-82.
- (7) Novellino MM, Sesma N, Zanardi PR, Laganá DC. Resonance frequency analysis of dental implants placed at the posterior maxilla varying the surface treatment only: A randomized clinical trial. *Clin Implant Dent Relat Res.* 2017 Jun 20. doi: 10.1111/cid.12510. [Epub ahead of print]
- (8) Sartoretto SC, Alves AT, Resende RF, et al. Early osseointegration driven by the surface chemistry and wettability of dental implants. *J Appl Oral Sci.* 2015 May-Jun;23(3):279-87.
- (9) Sartoretto SC, Alves AT, Zarranz L, et al. Hydrophilic surface of Ti6Al4V-ELI alloy improves the early bone apposition of sheep tibia. *Clin Oral Implants Res.* 2016 Jun 17. doi: 10.1111/clr.12894. [Epub ahead of print]
- (10) Val JE, Gómez-Moreno G, Ruiz-Linares M, et al. Effects of Surface Treatment Modification and Implant Design in Implants Placed Crestal and Subcrestally Applying Delayed Loading Protocol. *J Craniofac Surg.* 2017 Mar;28(2):552-558.

JEDEN TAG EIN NEUES LÄCHELN

NUEVAS SONRISAS TODOS LOS DÍAS

NYA LEENDEN VARJE DAG



Straumann North American Headquarters
 Straumann USA, LLC
 60 Minuteman Road
 Andover, MA 01810
 Phone 800/448 8168 (US) • 800/363 4024 (CA)
 Fax 978/747 2490
 www.straumann.us • www.straumann.ca

NOVOS SORRISOS TODOS OS DIAS

CHAQUE JOUR DE NOUVEAUX SOURIRES

NAMLIT.2179 12/22 V1 PMR

© Neodent® 2022. All rights reserved.
 Neodent® and/or other trademarks and logos from Neodent® that are mentioned herein are the trademarks or registered trademarks of Straumann Holding AG and/or its affiliates.
 All rights reserved.

ifu.neodent.com.br/en
 www.neodent.us • www.neodent.ca



A Straumann Group Brand