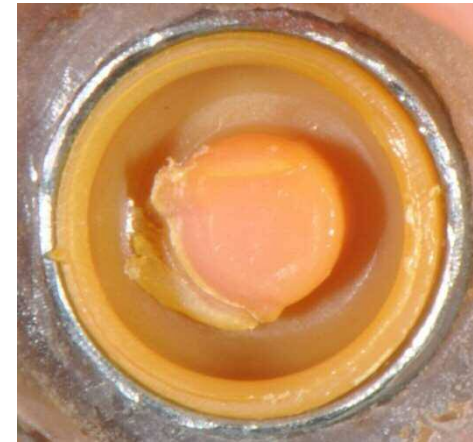
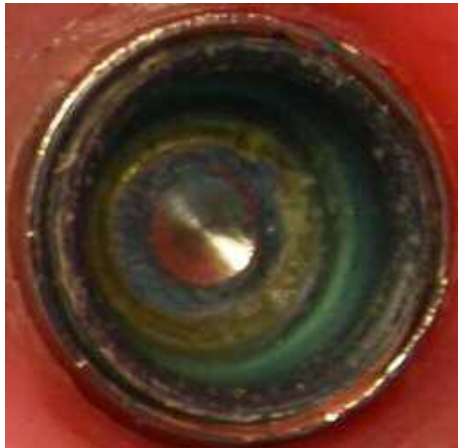
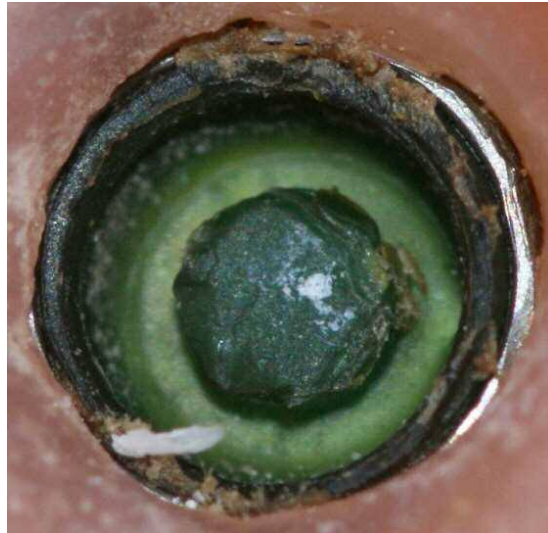
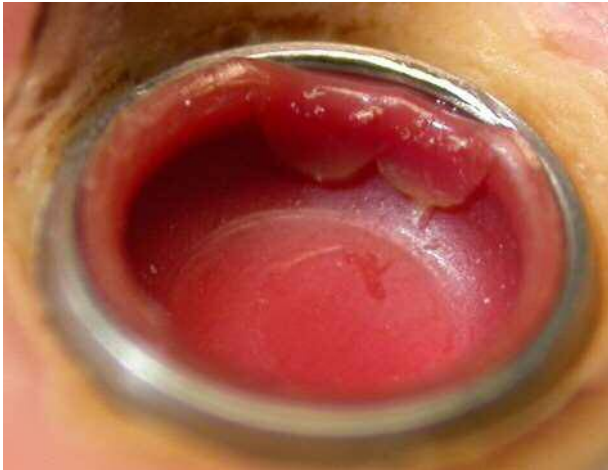


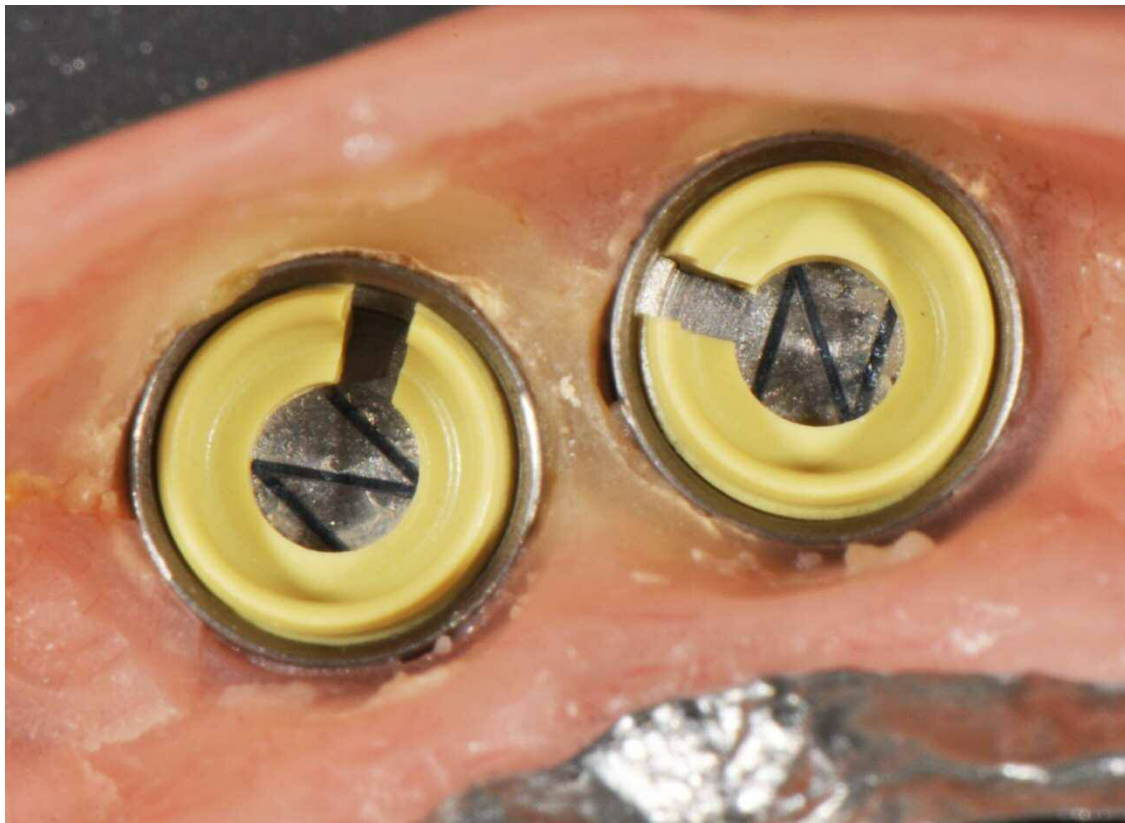
**Novaloc**<sup>TM</sup>  
s w i s s m a d e

The ultimate matrix system for  
Locator<sup>®</sup> male placements  
or Locator<sup>®</sup> abutments

# Damages of Zest Locator<sup>®</sup> retention inserts



# **Novaloc™** retention inserts after 9 months of use



- better physical properties
- more hygienic
- less servicing expense

# Novaloc™ matrix housings

**PEEK**

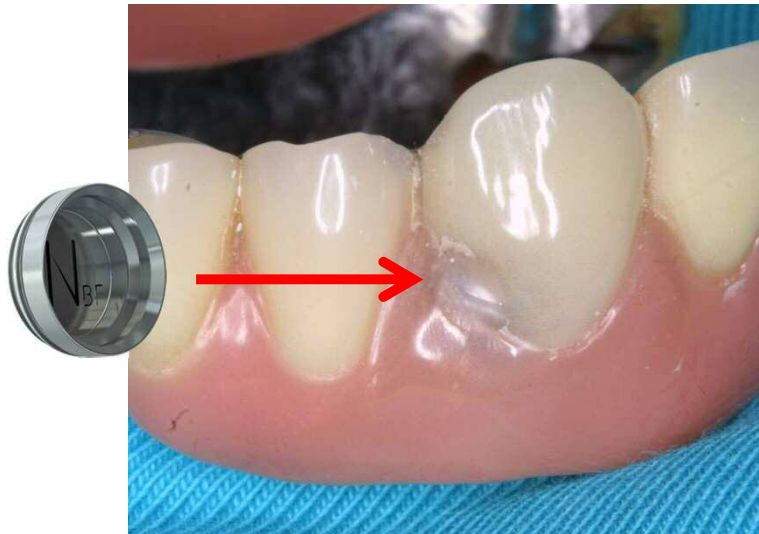


**titanium**

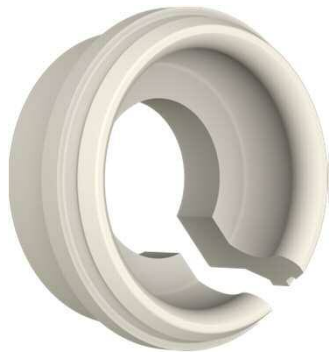




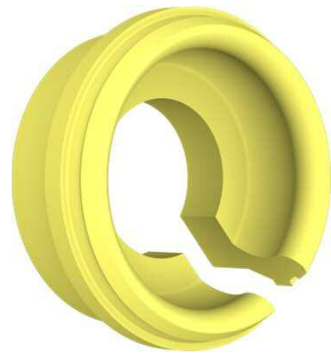
# Novaloc™ PEEK matrix housing



# The 4 Novaloc™ retention inserts



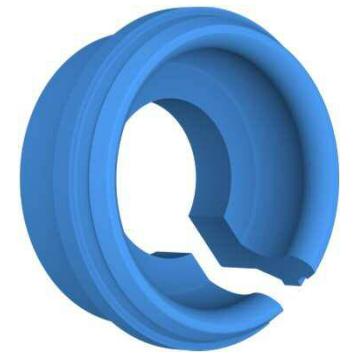
1.5lbs  
*light*



2.5lbs  
*medium*



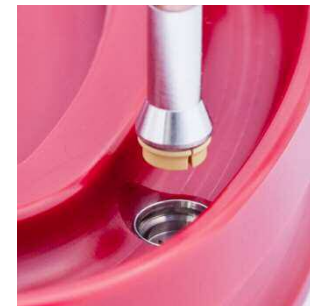
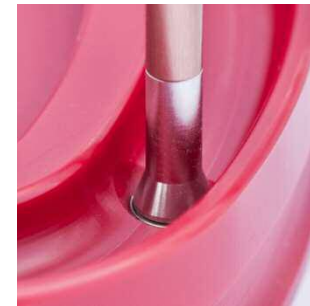
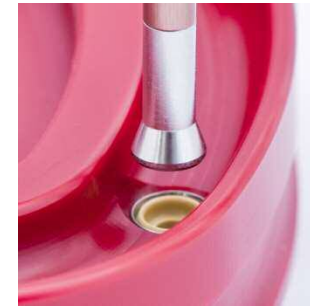
3.5lbs  
*strong*



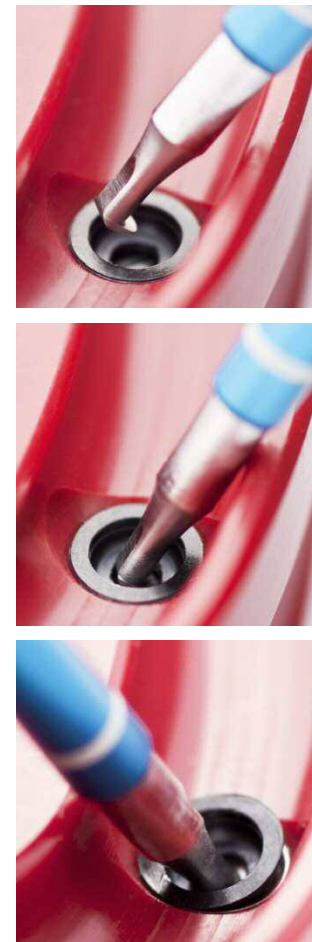
4.5lbs  
*extra strong*

retention force

# Stress-free mounting and removing of retention inserts

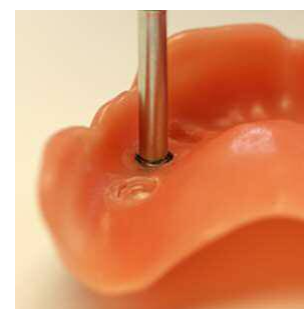


# Novaloc™ model analogue reposition aid + demounting tool for mounting inserts





# **Novaloc™** «5-seconds» matrix housing extractor (titanium matrix housing)



# Novaloc™ forming / fixing matrix

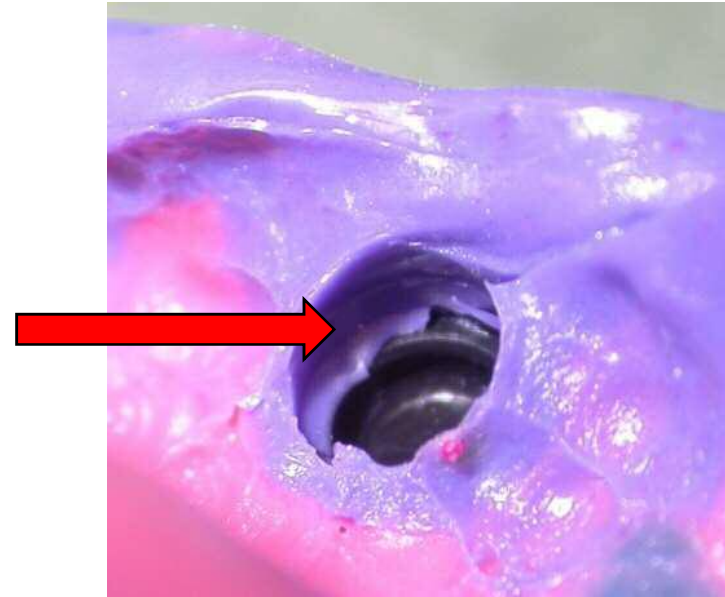


Very space saving forming matrix  
Secure space for the matrix housing

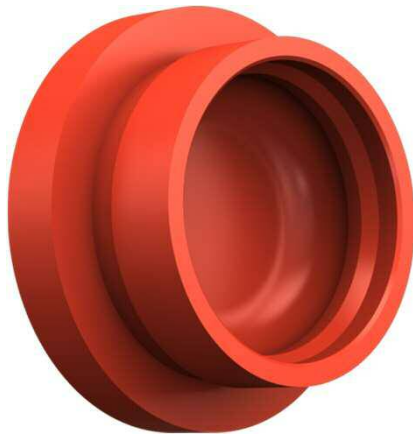
# Damage with the Zest Locator<sup>®</sup> impression coping



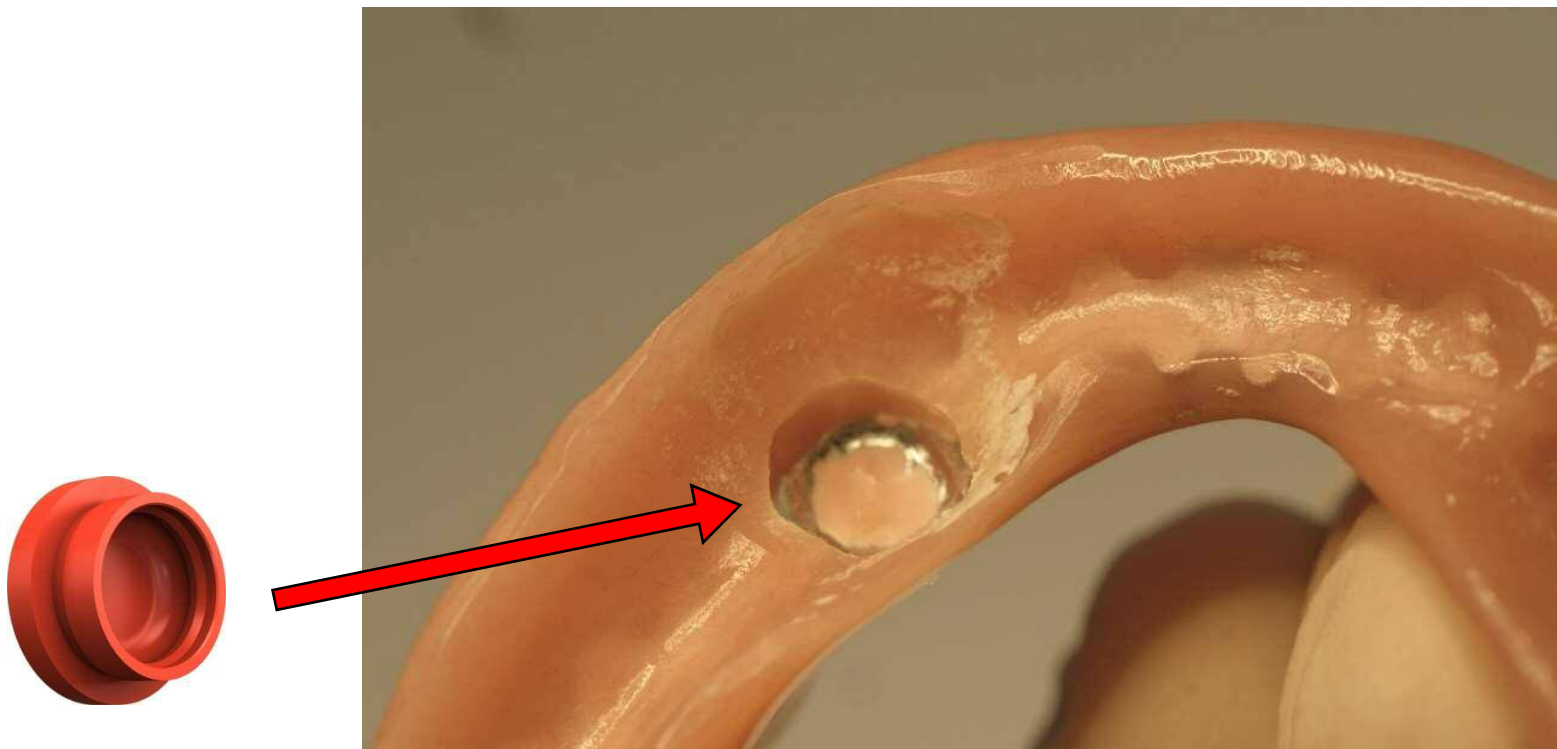
**Too high and position  
is unclear**



# Safe and accurate forming with **Novaloc**<sup>TM</sup>



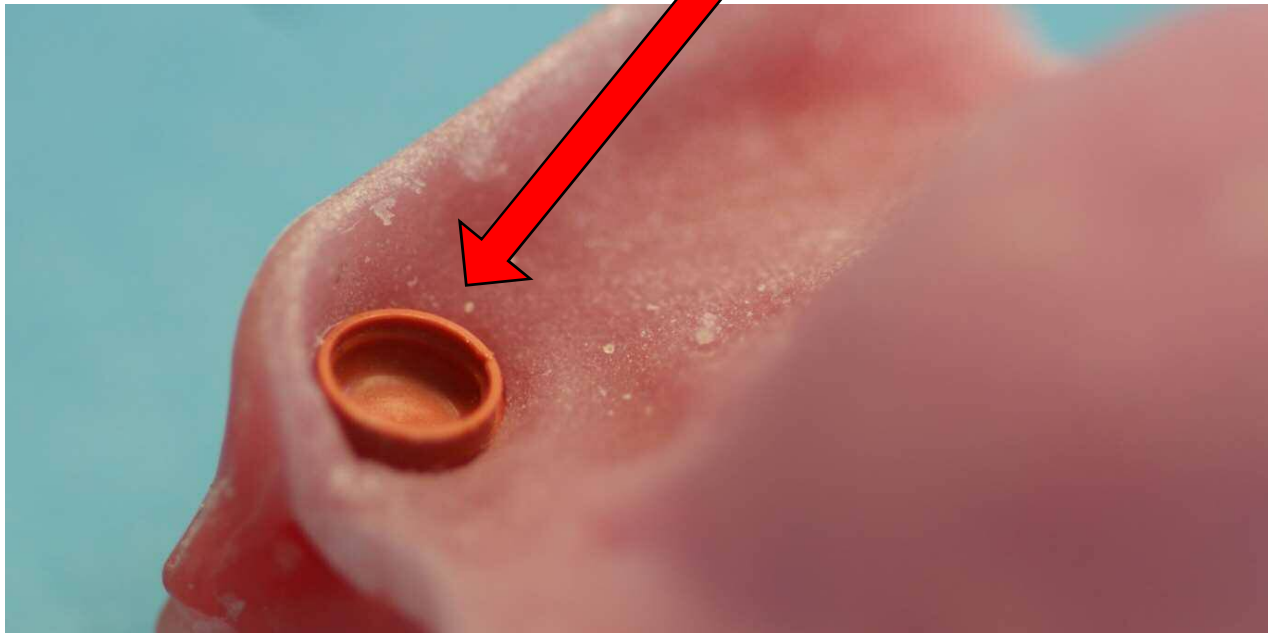
## Procedure for additional matrix-assembly with lining



**Prepare for minimal consumption of space to use forming matrix**

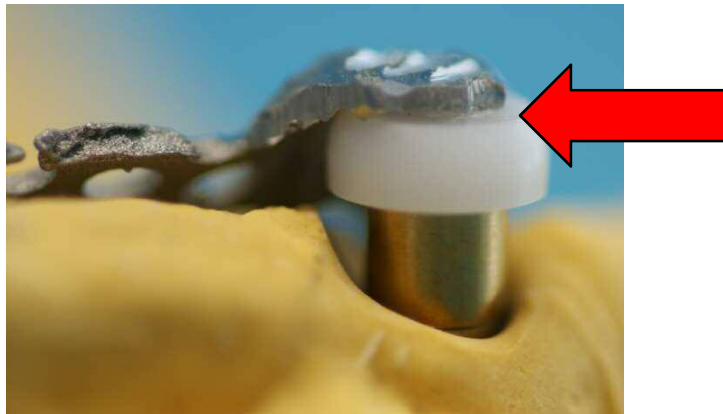
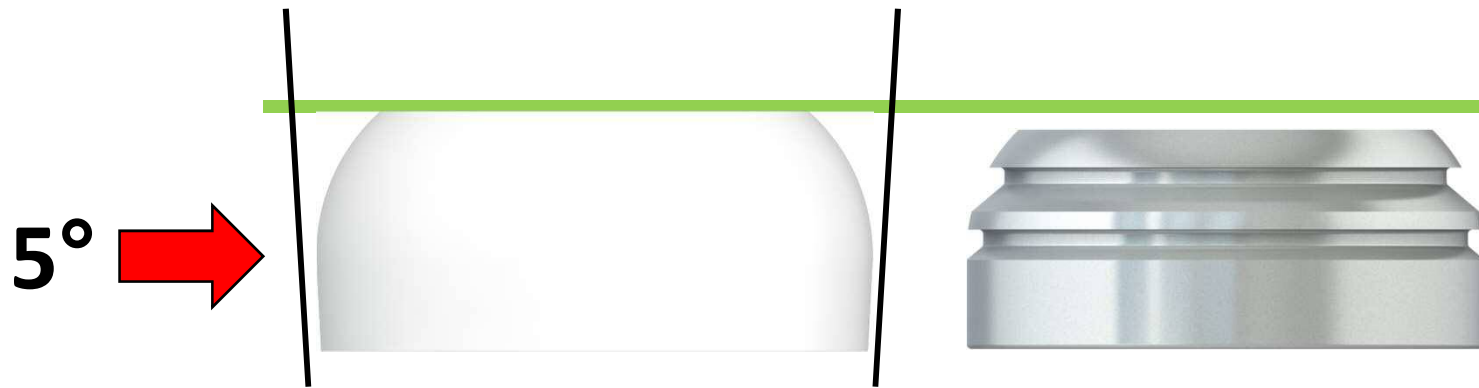


# Novaloc™ forming / fixing matrix

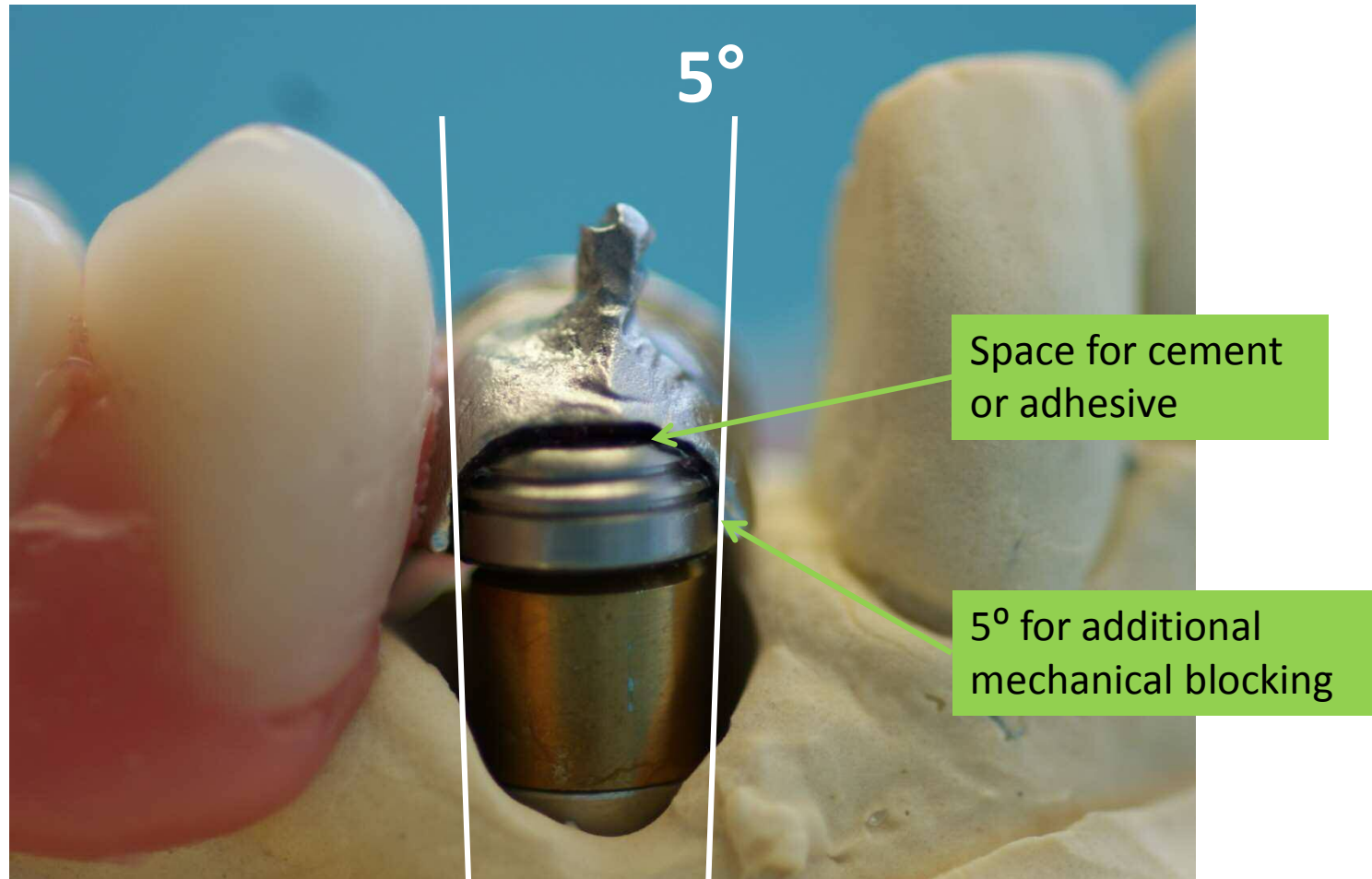


**Ideal fixing matrix for templates, bite registers and rails**

# Novaloc™ processing spacer with blocking property



# Recess for the adhesive



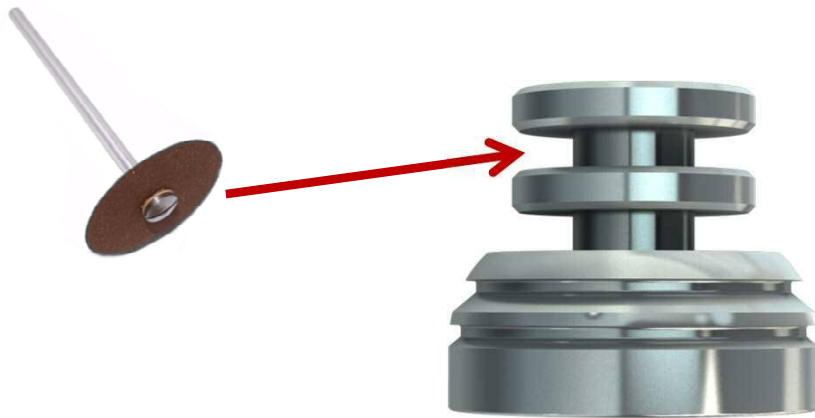
# The Novaloc™ equipment box

- No caps in the inventory
- Ensures overview and order
- Ordering number legible in the cover
- No separation when the cover is closed
- Three special instruments for all sorts of manipulations



# Novaloc™ special accessories

## Matrix housing with attachment option



**Indication:**

Low-lying or not  
ideal selected  
abutment heights

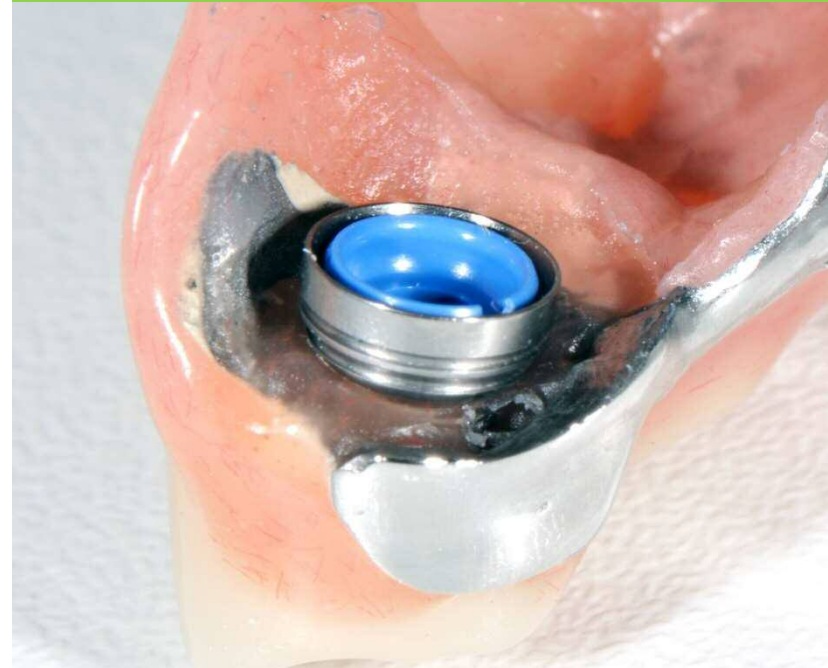


# Clever Novaloc™ special accessory

**Too low lying abutment**



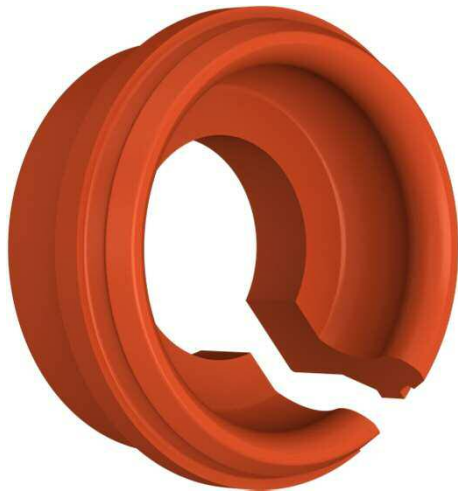
**Matrix housing can be mounted with Novaloc™**



# Novaloc™ special accessories

**Retention insert red**  
*extra light*

0.5lbs



**Indication:**

- Dentures with 4 or more attachments
- Starting insert for acclimatization

# Novaloc™ special accessories

## Retention insert black *ultra strong*

5.5lbs



### Indication:

- Dentures with only one supporting element
- Heavily worn abutment

**Altus**<sup>TM</sup>

GINGIVA HEIGHT MEASURING TOOL



## Consequences of a too low-lying abutment:



Matrix housing gets pushed under the gingiva



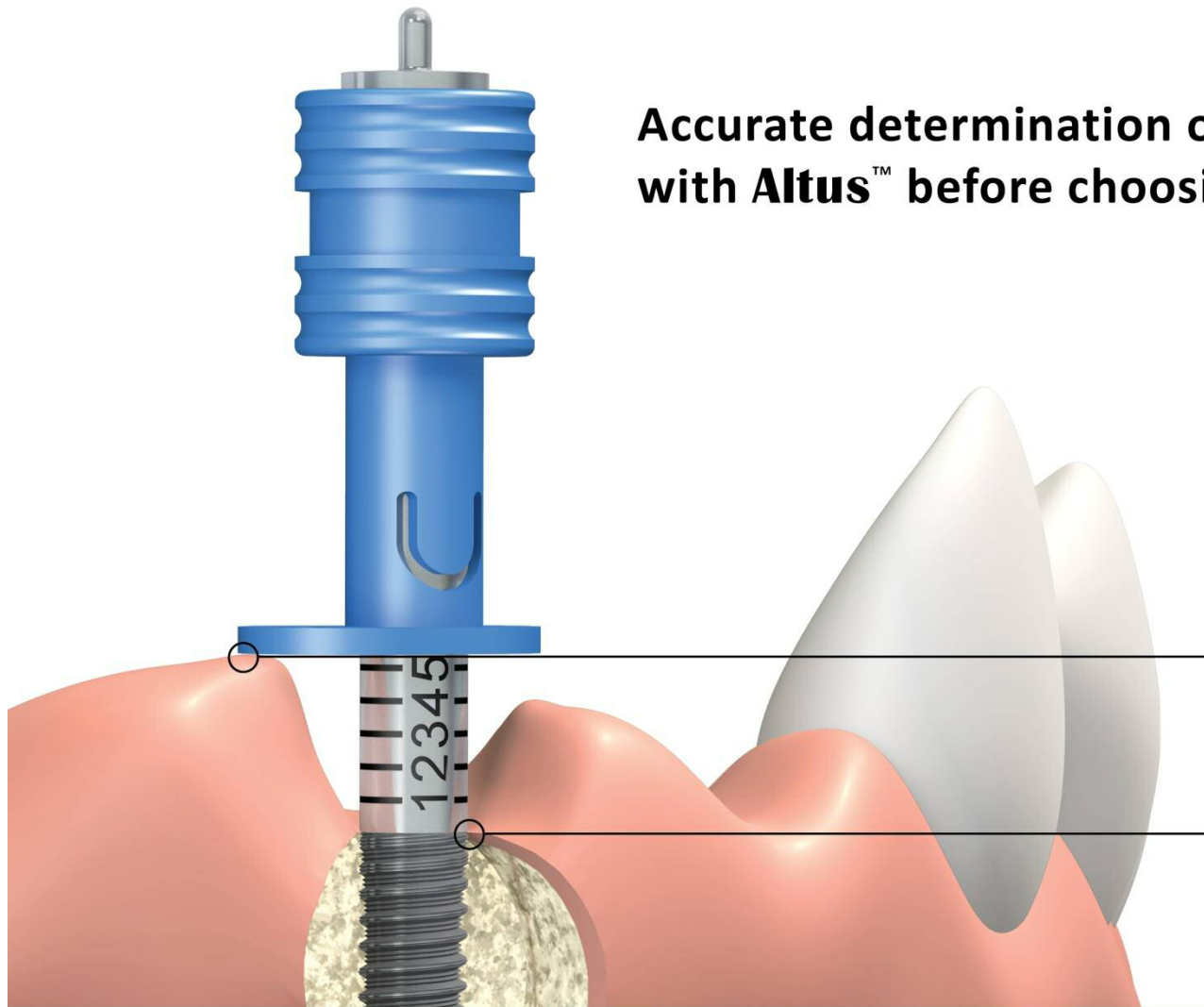
Inadequate fixation of the matrix housing in the denture due loss of retention



# Altus™

## GINGIVA HEIGHT MEASURING TOOL

**Accurate determination of the gingiva levels  
with Altus™ before choosing an abutment**



Locates the highest gingiva position



Quick positioning without screwing

# **Altus<sup>TM</sup>**

**Determination of gingiva levels**

# Altus™

## GINGIVA HEIGHT MEASURING TOOL



**Altus™** gingiva height measuring tool consists of a slider (PEEK) and a multifunctional scale part (stainless steel).



**Altus™** can be used on a variety of platforms (expandable on request).

Implant	Diameter
Astra Tech OsseoSpeed®	4.5 mm / 5.0 mm
Biomet 3i Certain®	5.0 mm
Camlog®/ Conelog®	5.0 mm
Dental-Ratio OKTAGON® Tissue Level	RP 3.3 mm / 4.1 mm / 4.8 mm
Dental-Ratio OKTAGON® Tissue Level	TD 4.1 mm
Dental-Ratio OKTAGON® Tissue Level	WP 4.8 mm
Nobel Active®	RP 4.3 mm / 5.0 mm
Nobel Biocare Replace Select®	5.0 mm / 6.0 mm
Straumann SynOcta®	RN 4.8 mm
Straumann SynOcta®	WN 6.5 mm
Zimmer Tapered Screw-Vent®/ MIS SEVEN®/ Bio Horizons Internal®	4.5 mm (platform)
Astra Tech OsseoSpeed®	3.5 mm / 4.0 mm
Biomet 3i Certain®	3.4 mm / 4.1 mm
Bredent® SKY	3.5 - 5.5 mm
Camlog®/ Conelog®	3.3 mm / 3.8 mm / 4.3 mm
Dental-Ratio OKTAGON® Bone Level	BL 3.3 mm / 4.1 mm / 4.8 mm
Dentsply-Friadent Frialit / Xive®	3.4 mm / 3.8 mm / 4.5 mm / 5.5 mm
Dentsply-Friadent Ankylos®	3.5 mm
Medentika M-Implant®	3.0 - 5.0 mm
Nobel Active®	NP 3.5 mm
Nobel Biocare Replace Select®	3.5 mm / 4.3 mm
Straumann Bone Level®	NC / RC
Zimmer Tapered Screw-Vent®/ MIS SEVEN®/ Bio Horizons Internal®	3.5 mm (platform)

The products marked with ® are registered trademarks of the respective manufacturers.

# Altus™

## GINGIVA HEIGHT MEASURING TOOL

invivo

Clean and comfortable positioning of **Altus™** in the oral cavity by using the tweezers.



Photo: Valoc AG, 02/2013

# Altus™

## GINGIVA HEIGHT MEASURING TOOL

invivo

For measurements on the laboratory model.

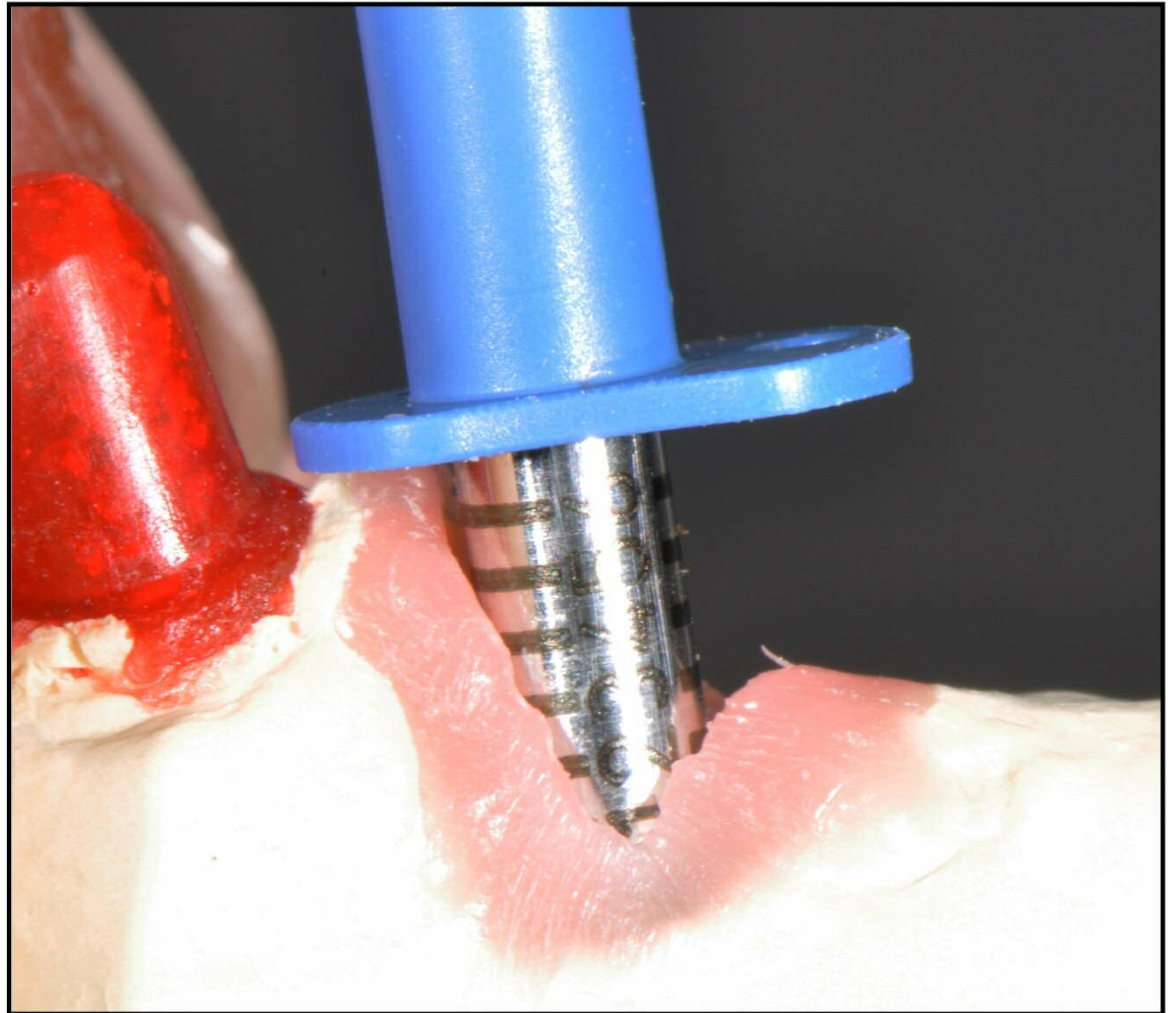


Photo: Valoc AG, 03/2013



# Altus™

## GINGIVA HEIGHT MEASURING TOOL

invivo

The **Altus™** technology specifically determines the maximum level of gingiva at unequal levels.



Photo: Valoc AG, 03/2013