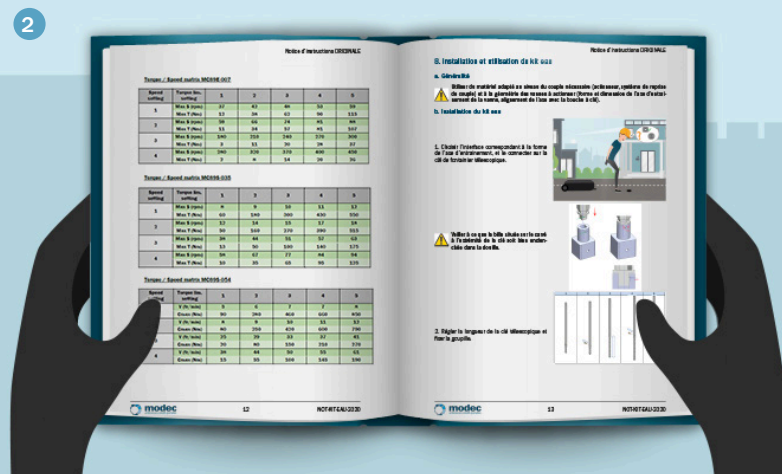
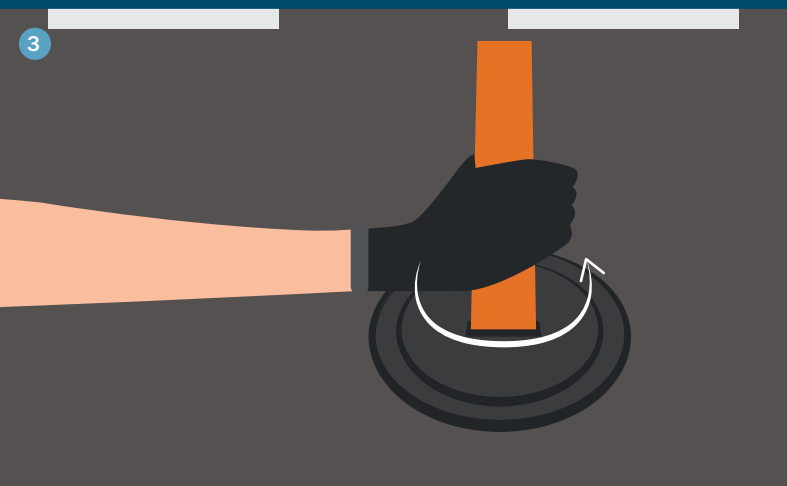




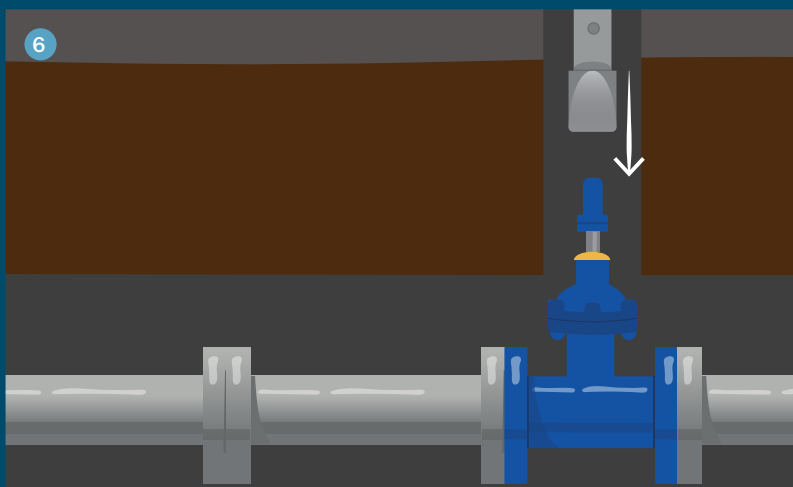
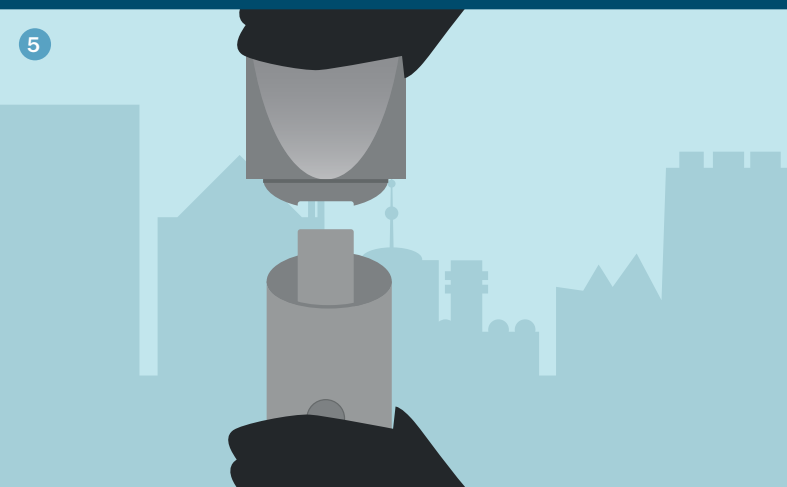
ASSEMBLY OF THE H2O KIT



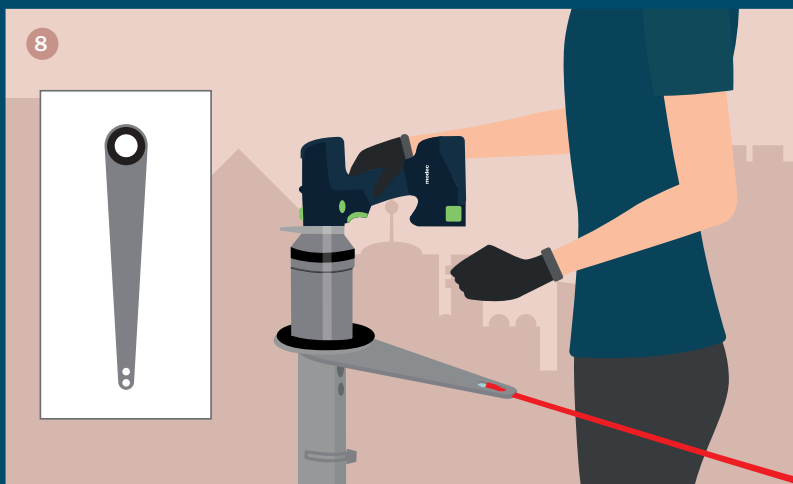
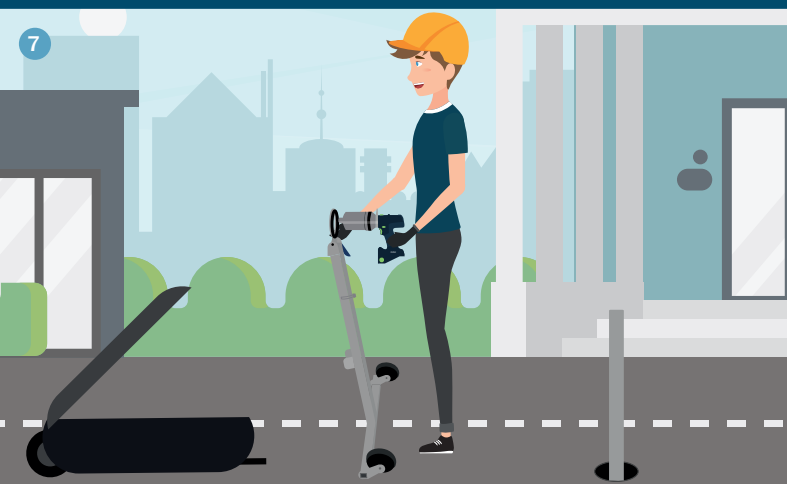
First of all, carefully read the instruction manual.



Open the valve box and check the shape and condition of the valve output drive shaft.

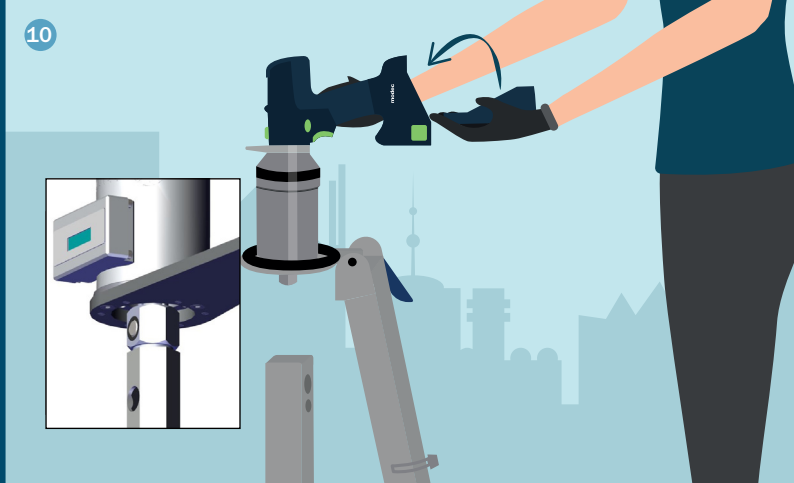


Attach the socket (DCxxx) to the telescopic valve key (EB0xx) and connect it to the valve.
The top of the valve key must be at thighs level.



Connect the actuator to the foot held reaction arm (BA012)

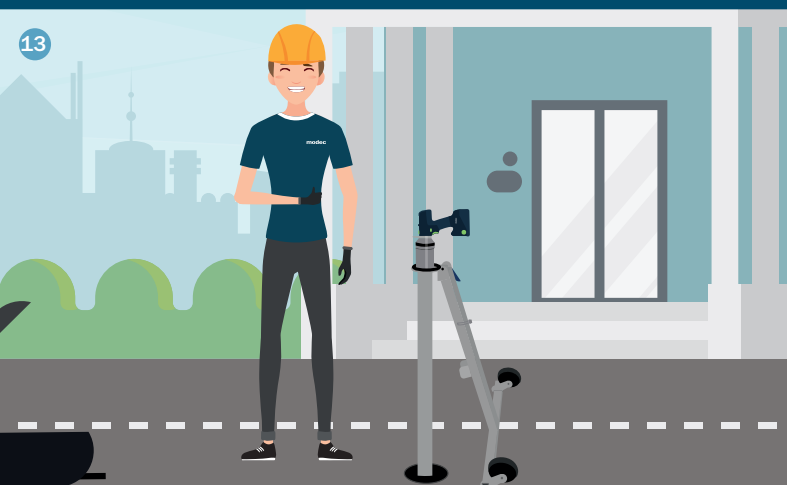
If the required torque exceeds 350 Nm, use the BR001 reaction arm.



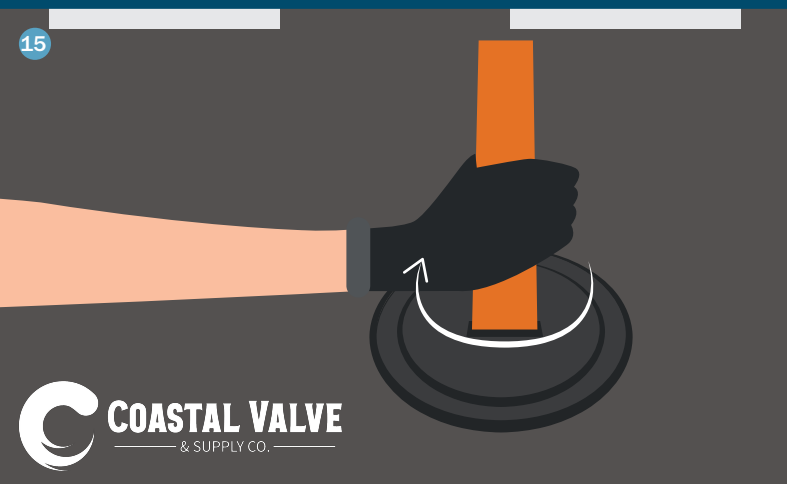
Plug the actuator to the valve key, adjust the height of the BA012 to be comfortable.



Set torque to minimum, select rotation direction (D1=Clockwise/D2=Counter-clockwise) and start the operation. Increase torque and/or speed if necessary.



Once the operation is completed, place the elements back in the suitcase, or keep them assembled and use the wheels to move to the next valve.



Don't forget to close the valve box!
Thank you for choosing modec!