



**MRS LLC**



MRS-NEPTA DM

CAPABILITIES  
STATEMENT

# ABOUT US



MRS-NEPTA DM proudly presents a dynamic and influential profile showcasing our unrivaled expertise, setting a new industry standard with groundbreaking developments, along with a past performance of nearly \$1.5 Billion and growing.

We are a Veteran MBE- and WOSB/EDWOSB-owned disaster recovery consulting company, redefining disaster recovery, preparedness, and response protocols for governments, businesses, and families with more than 100 years' combined experience. Our expertise in FEMA PA, Estimating, Close-outs, Project and Grant Development, Management and Administration, HMGP, CDBG, Cost Analyses, Appeals, and more provides you with peace of mind.

We empower you to mitigate risk and bolster resilience by solving problems holistically in daily and crisis-driven situations, choosing to incorporate a multi-industry platform in every solution.

Our legacy of excellence in disaster recovery and grant management is exemplified by our significant contributions to critical projects across diverse regions and domains.

# Leaders in Disaster Management



With a proven track record in Disaster Recovery and Grant Management, our journey is marked by remarkable accomplishments. Our portfolio of projects spans decades, and we have demonstrated our proficiency in:

- **Public Assistance Excellence:** Conducting Compliance Reviews, Cost Estimating using RS Means/CEF standards, and delivering projects of monumental value.
- **Comprehensive Engagement:** From Cost Reasonableness Analysis and Application Development to Project Management and Grant Administration, we leave no stone unturned in ensuring seamless recovery operations.
- **Mitigation Expertise:** Our involvement in 406 Mitigation reviews underscores our commitment to reducing future disaster risks.

# A Footprint of Influence

- **Diverse Project Spectrum:** Our expertise spans nearly all eligible project types under the Public Assistance (PA) Program and the Hazard Mitigation Grant Program (HMGP), reflecting versatile capabilities.
- **Comprehensive Engagement:** From Cost Reasonableness Analysis and Application Development to Project Management and Grant Administration, we leave no stone unturned in ensuring seamless recovery operations.
- **Public Asst. Experience:** Whether it's collaborating with the Governor's Office of Homeland Security and Emergency Preparedness (GOHSEP), aiding the City of St. Petersburg, Florida, or supporting Lafourche Parish, Louisiana, we stand as a reliable partner in achieving solution-based outcomes.
- **Mitigation Expertise:** Our involvement in 406 Mitigation reviews underscores our commitment to reducing future disaster risks.





CORE QUALIFICATIONS  
AND  
CAPABILITIES

# MRS-NEPTA DM CONSULTING

The background of the slide is a blurred photograph of a desk. On the desk, there is a laptop, a white mug, a pair of glasses, and some papers. The lighting is soft and warm, creating a professional and focused atmosphere.

We deliver comprehensive consulting services to Local, State, and Federal entities that offer invaluable support in Project Management and Program Administration across three (3) critical Federal Grant Programs.

- FEMA Public Assistance (PA) Grant Program
- Hazard Mitigation Grant Program (HMGP)
- Community Development Block Grant – Mitigation Program (CDBG-MIT) / Disaster Recovery Program (CDBG-DR)



This Photo by Unknown Author is licensed under [CC BY-ND](#)

# Disaster Recovery & Project Management

Our footprint of success stretches far and wide, transcending traditional boundaries. The approach we use adapts to the unique size and nature of each project, allowing us to efficiently tailor our services to your needs. Our policy specialists follow FEMA guidelines and regulations meticulously in all phases of PW administration, including eligibility determinations, cost estimating, and documentation. We will initiate a comprehensive review of each PW to understand the specific scope, size, and damage involved while pursuing all means necessary to bring each project to its full conclusion.

At the core of our philosophy lies the delicate balance of cost, time, and quality. We are experts in harmonizing competing demands and our track record speaks for itself. We have successfully administered programs and projects in various regions, including the US Virgin Islands (USVI), St. Croix, Florida, Louisiana, Texas, West Virginia, and Puerto Rico. We are poised and eager to expand our services across the United States.

# Mitigation Planning

Mitigation planning often involves navigating complex regulatory requirements and accessing federal funding. Our team of experts possesses in-depth knowledge of FEMA policies, guidelines, and grant programs

Proactive Risk Reduction is the most effective way to address disasters is to minimize the impact of associated risks or prevent them from happening.

Continuous improvement within mitigation planning is not a one-time effort; it is an ongoing process of assessment, planning, implementation, and evaluation. We remain your partner in improving mitigation strategies and adapting to evolving risks.





# Cost Estimating Services

The cost estimate is a detailed look at the scope of work required to repair or replace a damaged structure. RSMeans, a preferred costing tool, provides accurate and up-to-date industry cost data. With more than 100 years' combined experience, we can quickly and accurately develop preliminary estimates for planning and development from single structures to college campuses.

We strive to provide the following list that includes but is not limited to:

- Parametric Estimating
- Lifecycle Costing
- Benefit Cost Analysis
- Cost Engineering
- Hazard Modeling
- Analytics and Decision Science Modeling

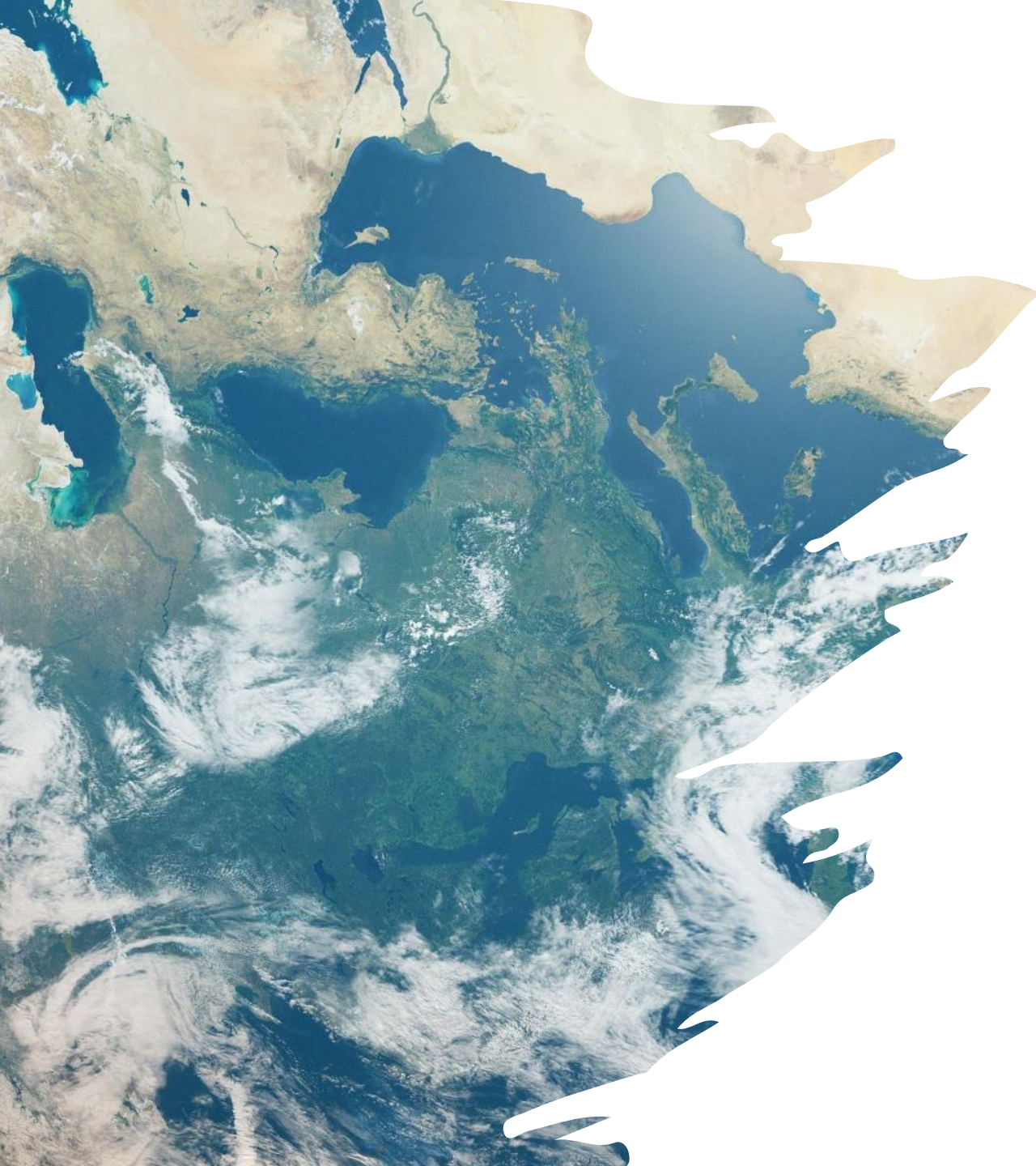


# Comprehensive Training

Training is at the core of our mission. Our highly-educated and trained team utilizes an “all-hazards” framework to deliver training programs designed to empower individuals and organizations. We specialize in resilient solutions in preparing for, mitigating against, responding to, and recovering from any crisis-driven event. Over 100 years’ experience allows us to provide practical solutions that are flexible and adaptable to any situation.

In essence, we are a world-class organization with an extensive training portfolio covering a wide spectrum from emergency and grant management to terrorism preparedness and project management.





# Transformative Solutions

Our innovative approaches are not confined by geographic borders.

- **Managed Retreat Pioneers:** NEPTA is at the forefront of Managed Retreat initiatives, charting a course to address extreme weather, natural hazards, and climate impacts. We are shaping the future of disaster resilience by leading the way in strategic planning and environmental stewardship.
- **Safe Room Advocacy:** Our dedication to safety and resilience is evident through our pioneering role in Safe Room HMGP and/or CDBG-MIT Development. We champion secure spaces that protect lives and assets, paving the way for safer communities.
- **Empowering Knowledge:** NEPTA's commitment to education shines through our provision of vital Benefit Cost Analysis Training. We empower agencies with essential skills that drive informed decision-making, ensuring a brighter, more resilient future.

---

# MYREDFOLDER®

We proudly introduce a groundbreaking achievement that is poised to revolutionize the disaster preparedness landscape; a proprietary, trademarked, and copywritten disaster planning tool for families, businesses, and government entities.

This innovative solution is meticulously designed to empower you, your family, or your staff with the knowledge and resources necessary to navigate a disaster. Now, you can take proactive measures to safeguard your family and assets, making informed decisions with everything you need in one place.

MYREDFOLDER® is a testament to our commitment to enhancing resilience and ensuring that no one is left unprepared for the challenges that disaster bring.

